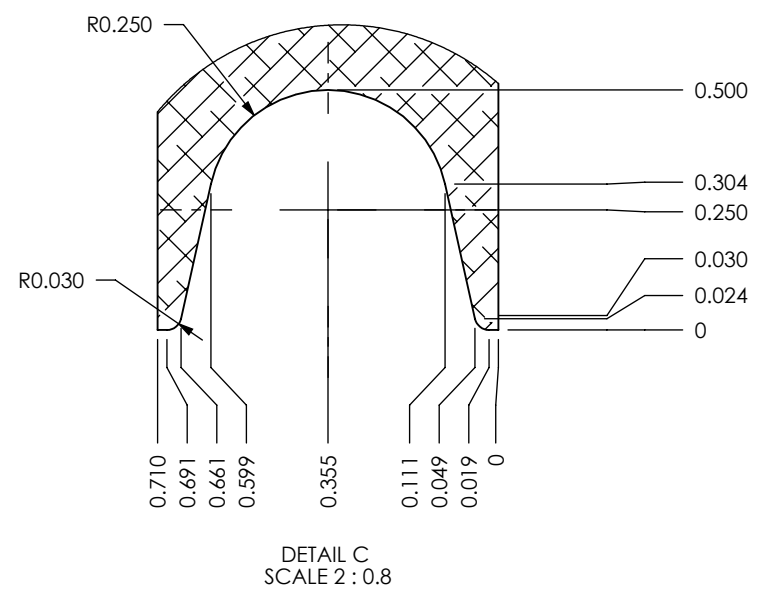
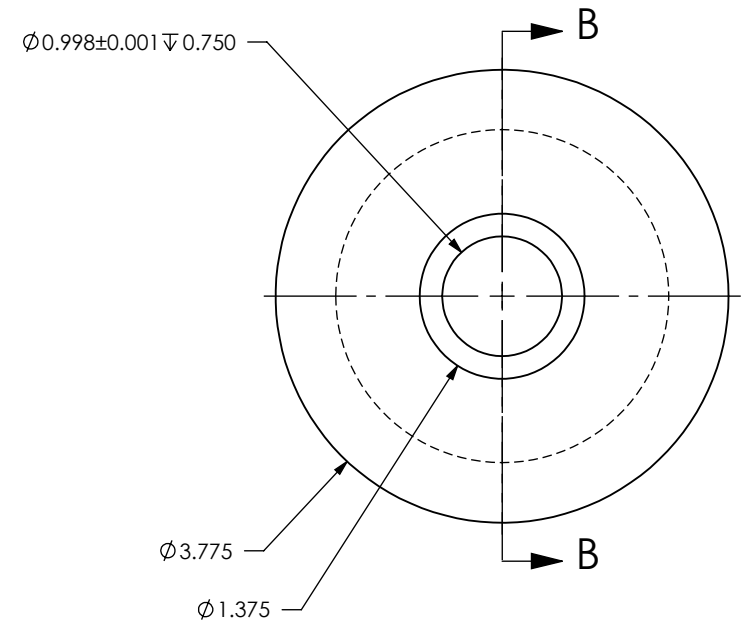
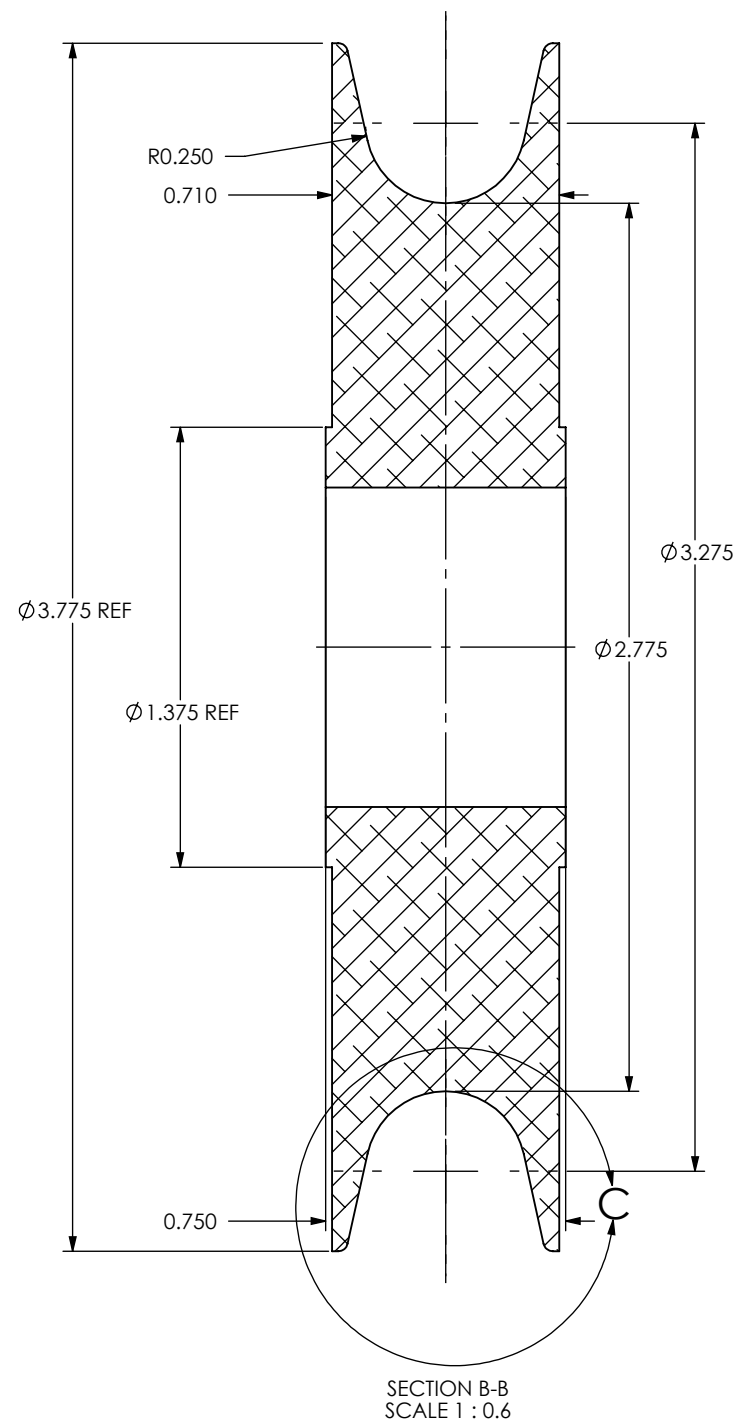
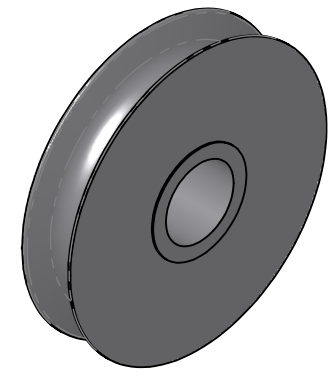


ITEM	QTY	PART NUMBER	LEGACY	DESCRIPTION	MATERIAL
1	1	106092	WD06-E0103 \ SM08-E0105	SHV AL6061 BLK ANOD WD BE NOSE	6061-T6 ALUMINUM

REVISIONS			
REV.	DESCRIPTION	BY	DATE
00	EPDM MIGRATION RELEASE WITH VISUAL PART ID	DEC	2023/05/17



- GENERAL NOTES**
1. THIS PART REPLACES SM08-E0105 AND WILL BE USED ON BOTH WD600 AND SM800
 2. REMOVE ALL BURRS AND BREAK SHARP EDGES AND CORNERS .75mm [.03in] MAX.

UNLESS OTHERWISE SPECIFIED, DIMENSIONS ARE IN INCHES. TOLERANCES FOR ROUGH AND CLEAR OPENINGS ARE ±3mm (.125"). ALL OTHERS ARE:

METRIC	X	.X	.XX	ANGLES
	±1.25	±.4	±.125	±1°
IMPERIAL	.X	.XX	.XXX	ANGLES
	±.03	±.015	±.005	±1°



COPYRIGHT 2016 ADVANTEC GLOBAL INNOVATIONS. ALL RIGHTS RESERVED. CONFIDENTIAL PROPERTY OF ADVANTEC GLOBAL INNOVATIONS. UNAUTHORIZED USE, REPRODUCTION OR DISTRIBUTION IS STRICTLY PROHIBITED. COPIES REMAIN THE PROPERTY OF ADVANTEC GLOBAL INNOVATIONS AND MUST BE RETURNED UPON REQUEST.

DWG TITLE
SHV AL6061 BLK ANOD WD BE NOSE

LEGACY
WD06-E0103 \ SM08-E0105

SCALE	DRAWN	DATE	CHECKED	DATE	SIZE
1:2	D. GATLE	07/05/2005		1800-01-02	B

DWG NO	SHEET	REV
106092	1 of 1	2