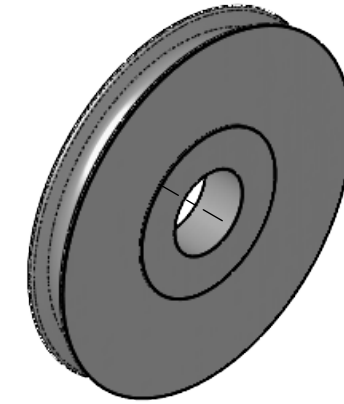


ITEM NO.	QTY.	PART NUMBER	LEGACY	DESCRIPTION	Material	Grade
1	1	106064	SM25-W0102	SHV AL6061 BLK ANOD SM25 LW	6061-T6 ALUMINUM	6061-T6 ALUMINUM

REVISIONS

REV.	DESCRIPTION	BY	DATE
00	EPDM MIGRATION RELEASE WITH VISUAL PART ID	ASP	2023-04-19



GENERAL NOTES

- REMOVE ALL BURRS AND BREAK SHARP EDGES AND CORNERS .75mm [.03in] MAX.
- PRODCUTION DETAILS

QUANTITY	
MATERIAL	6061-T6 ALUMINUM
WEIGHT	1.80LBS
PROCESS	<ul style="list-style-type: none"> • CUT FROM BAR STOCK • MACHINE • BLACK ANODIZE

UNLESS OTHERWISE SPECIFIED, DIMENSIONS ARE IN MILLIMETERS. TOLERANCES FOR ROUGH AND CLEAR OPENINGS ARE ±3mm (.125"). ALL OTHERS ARE:

METRIC	X	.X	.XX	ANGLES
	±1.25	±.4	±.125	±1°
IMPERIAL	.X	.XX	.XXX	ANGLES
	±.05	±.015	±.005	±1°

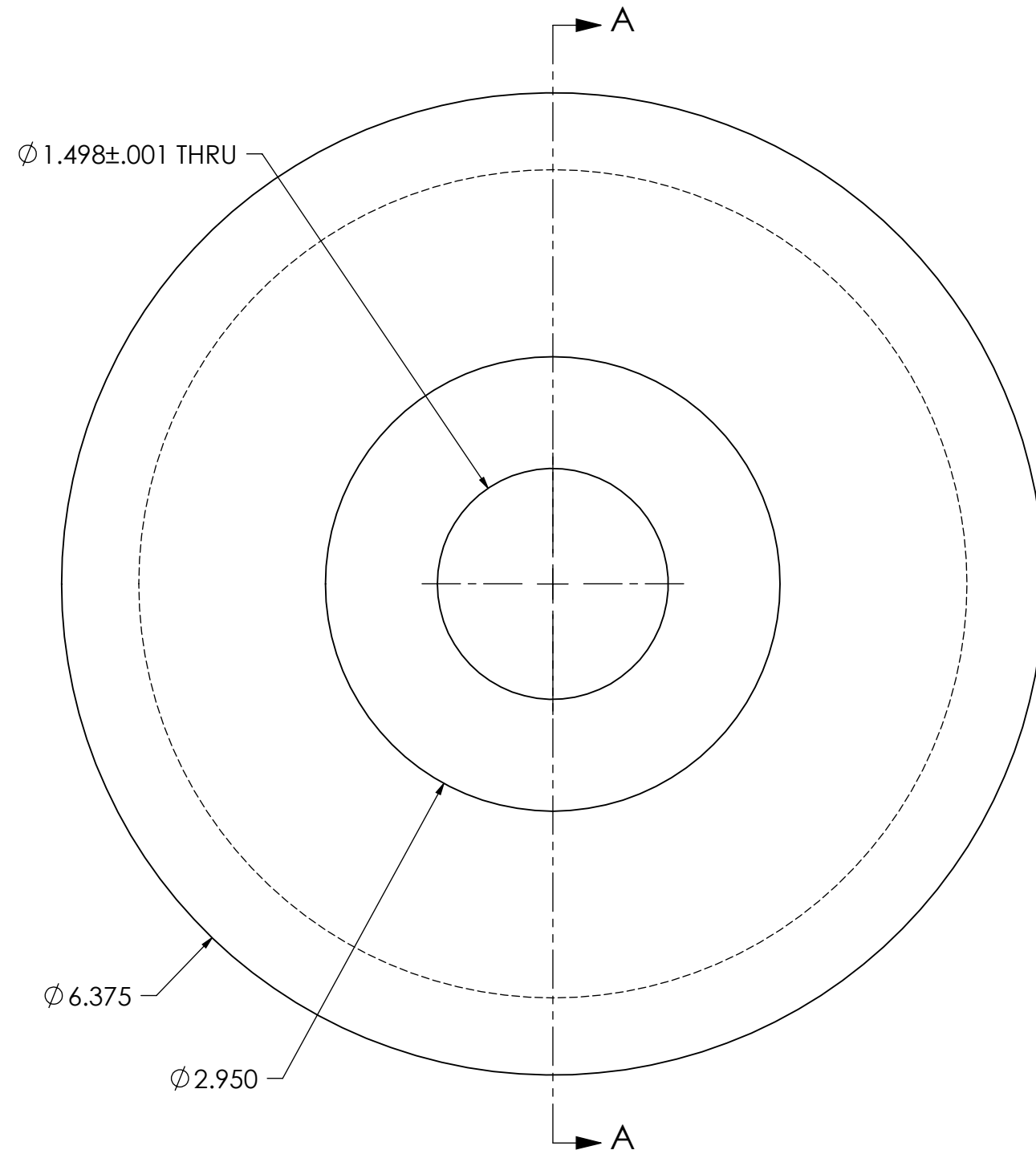
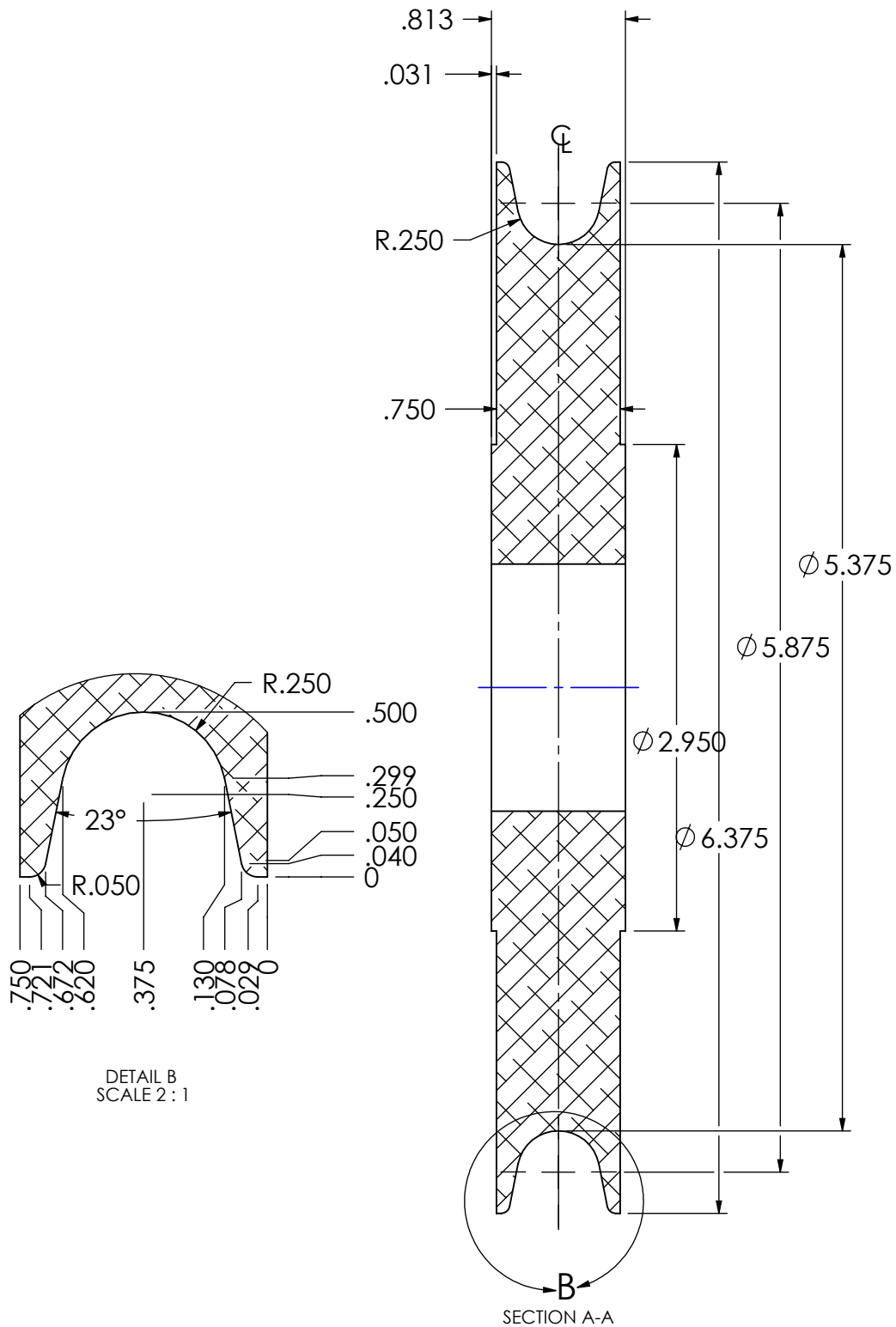


COPYRIGHT 2016 ADVANTEC GLOBAL INNOVATIONS. ALL RIGHTS RESERVED. CONFIDENTIAL PROPERTY OF ADVANTEC GLOBAL INNOVATIONS. UNAUTHORIZED USE, REPRODUCTION OR DISTRIBUTION IS STRICTLY PROHIBITED. COPIES REMAIN THE PROPERTY OF ADVANTEC GLOBAL INNOVATIONS AND MUST BE RETURNED UPON REQUEST.

DWG TITLE
SHV AL6061 BLK ANOD SM25 LW

LEGACY
SM25-W0102

SCALE	DRAWN	DATE	CHECKED	DATE	SIZE
1:1	D. GATLE	10/23/2003			B
		DWG NO		SHEET	REV
		106064		1	00
				of	
				1	



DETAIL B
SCALE 2 : 1