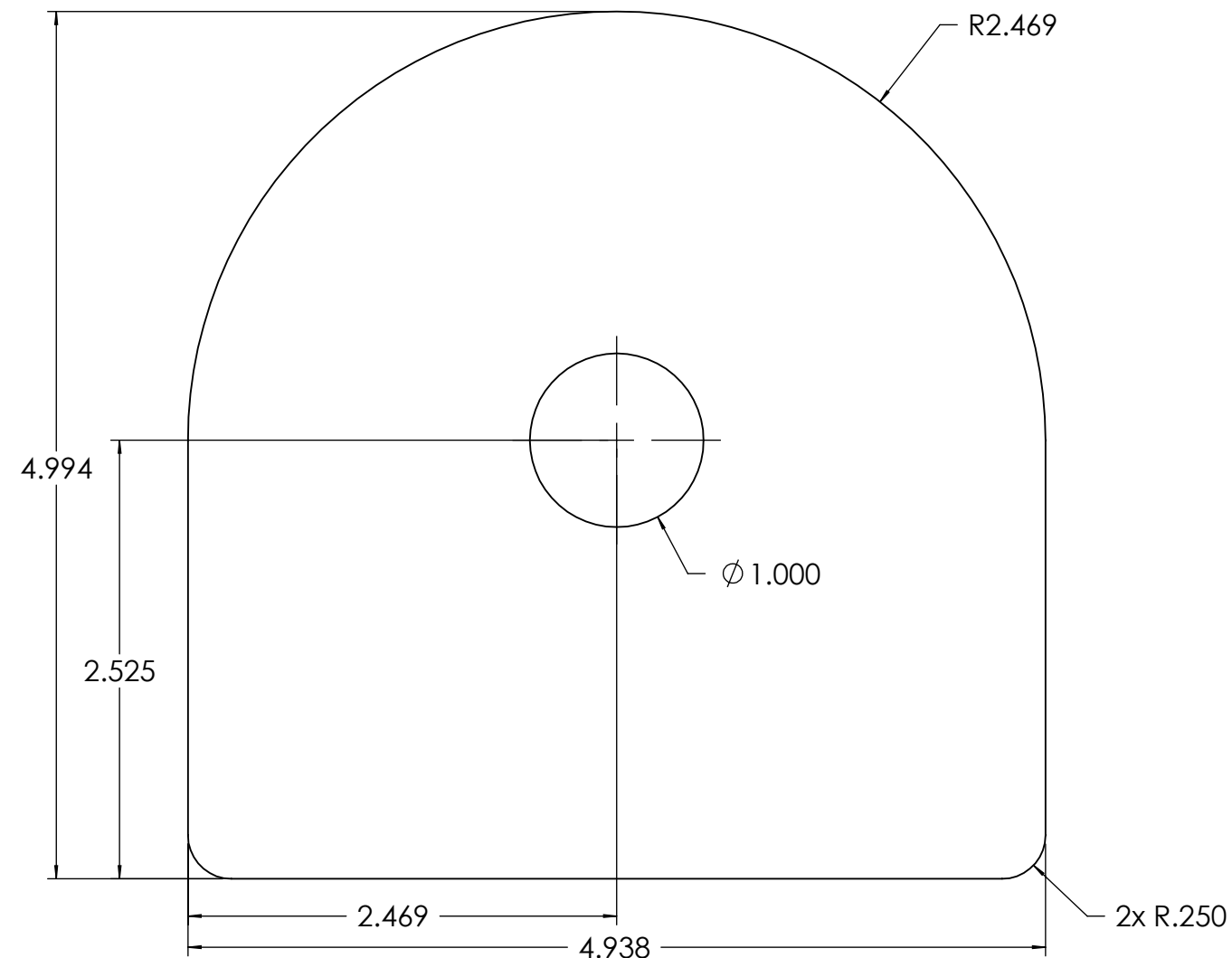
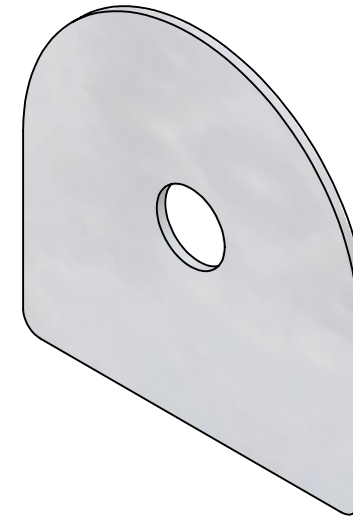


| ITEM | QTY | PART NUMBER | LEGACY | DESCRIPTION | MATERIAL |
|------|-----|-------------|------------|-------------------------------|-----------------|
| 1 | 1 | 105993 | SM15-W0104 | SPCR UHMW WH SM15 LW SHV OUTB | UHMW PE - WHITE |

| REVISIONS | | | |
|-----------|--|-----|------------|
| REV. | DESCRIPTION | BY | DATE |
| 00 | EPDM MIGRATION RELEASE WITH VISUAL PART ID | DEC | 2023-07-04 |



- GENERAL NOTES**
- REMOVE ALL BURRS AND BREAK SHARP EDGES AND CORNERS .75mm [.03in] MAX.
 - MATERIAL THICKNESS CANNOT EXCEED 0.125"

UNLESS OTHERWISE SPECIFIED, DIMENSIONS ARE IN INCHES.

| METRIC | X | .X | .XX | ANGLES |
|----------|-------|-------|-------|--------|
| | ±1.25 | ±.4 | ±.125 | ±1° |
| IMPERIAL | .X | .XX | .XXX | ANGLES |
| | ±.03 | ±.015 | ±.005 | ±1° |



COPYRIGHT 2016 ADVANTEC GLOBAL INNOVATIONS. ALL RIGHTS RESERVED. CONFIDENTIAL PROPERTY OF ADVANTEC GLOBAL INNOVATIONS. UNAUTHORIZED USE, REPRODUCTION OR DISTRIBUTION IS STRICTLY PROHIBITED. COPIES REMAIN THE PROPERTY OF ADVANTEC GLOBAL INNOVATIONS AND MUST BE RETURNED UPON REQUEST.

DWG TITLE
SPCR UHMW WH SM15 LW SHV OUTB

LEGACY
SM15-W0104

| SCALE | DRAWN | DATE | CHECKED | DATE | SIZE |
|-------|----------|------------|---------|------------|------|
| 1:1 | D. GATLE | 08/07/2003 | | 1800-01-02 | B |
| | | DWG NO | | SHEET | REV |
| | | 105993 | | 1 of 1 | 00 |