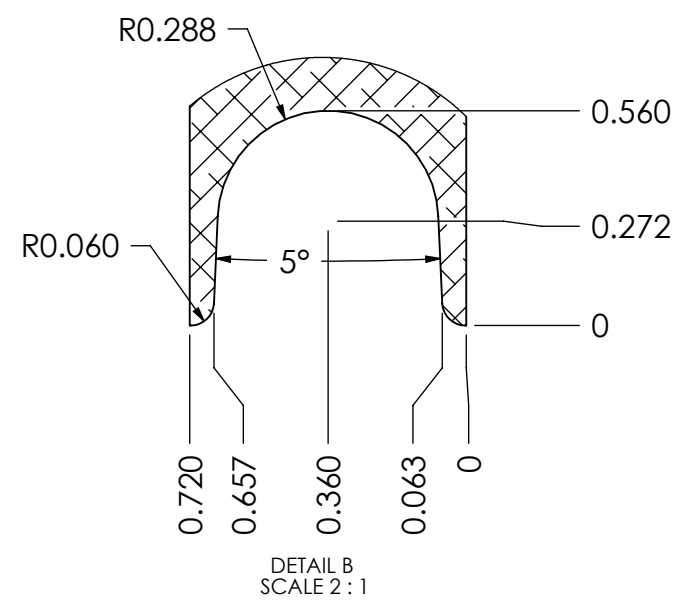
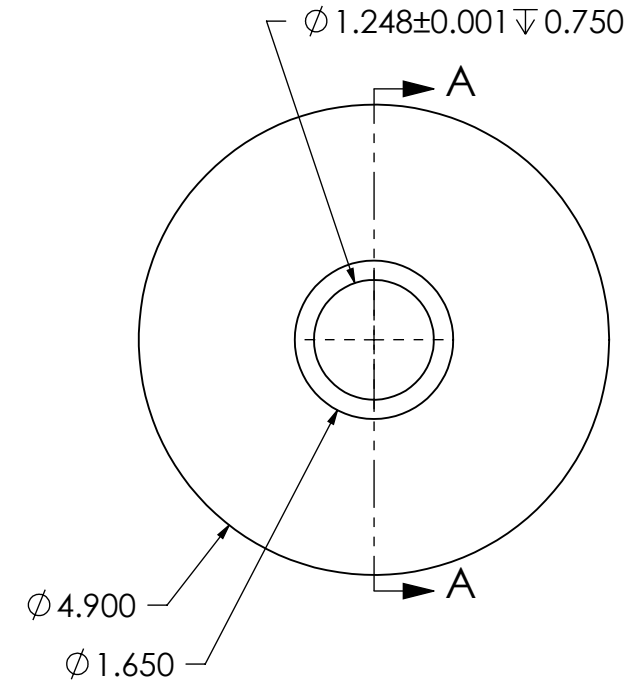
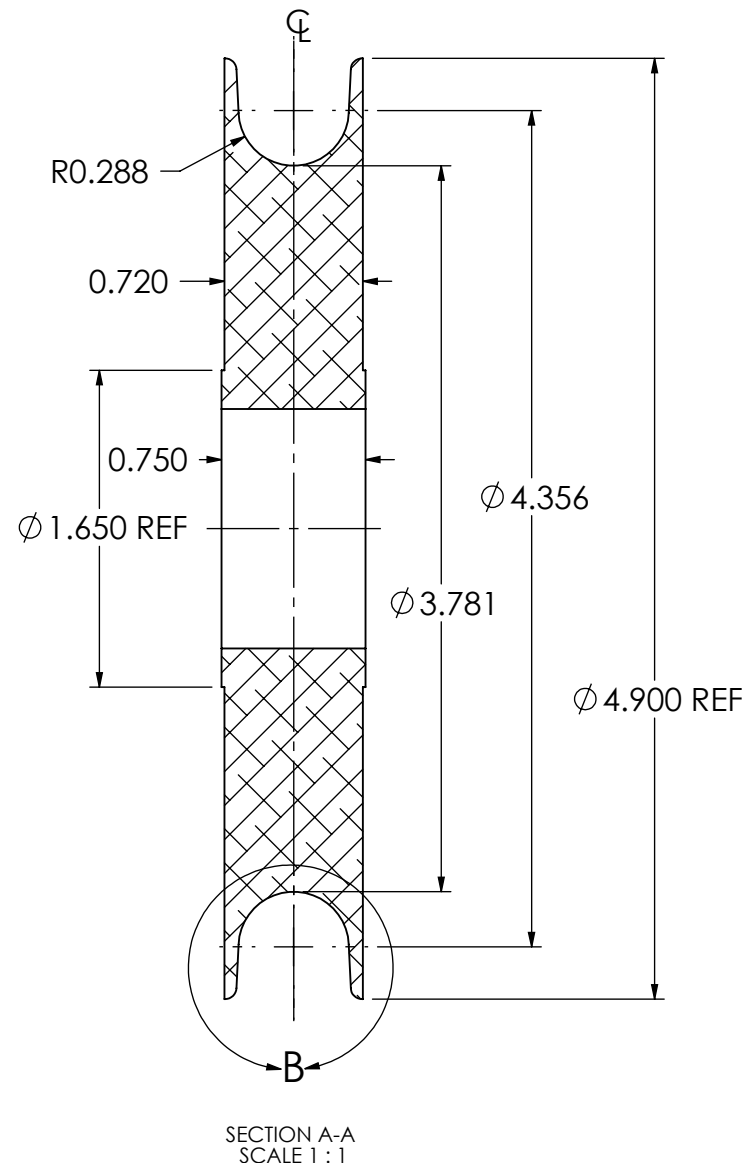
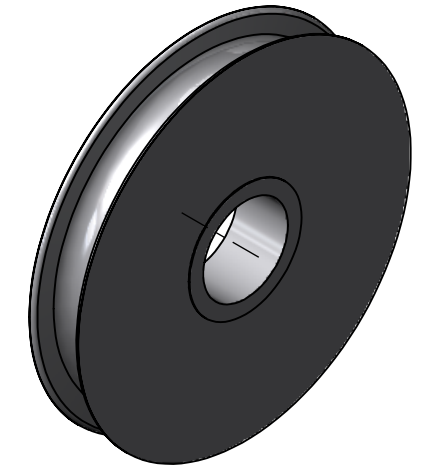


ITEM	QTY	PART NUMBER	LEGACY	DESCRIPTION	MATERIAL
1	1	105953	SM15-E0107	SHV AL6061 BLK ANOD SM15 BE NOSE	6061-T6 ALUMINUM

REVISIONS			
REV.	DESCRIPTION	BY	DATE
00	EPDM MIGRATION RELEASE WITH VISUAL PART ID	DEC	2023-07-02



GENERAL NOTES

- REMOVE ALL BURRS AND BREAK SHARP EDGES AND CORNERS .75mm [.03in] MAX.
- PRODUCTION DETAILS

QUALITY	
MATERIAL	6061-T6 ALUMINUM
WEIGHT	0.8486LBS
PROCESS	<ul style="list-style-type: none"> CUT FROM BAR STOCK MACHINE BLACK ANODIZE

UNLESS OTHERWISE SPECIFIED, DIMENSIONS ARE IN INCHES.

	X	.X	.XX	ANGLES
METRIC	±1.25	±.4	±.125	±1°
IMPERIAL	.X	.XX	.XXX	ANGLES
	±.03	±.015	±.005	±1°



COPYRIGHT 2016 ADVANTEC GLOBAL INNOVATIONS. ALL RIGHTS RESERVED. CONFIDENTIAL PROPERTY OF ADVANTEC GLOBAL INNOVATIONS. UNAUTHORIZED USE, REPRODUCTION OR DISTRIBUTION IS STRICTLY PROHIBITED. COPIES REMAIN THE PROPERTY OF ADVANTEC GLOBAL INNOVATIONS AND MUST BE RETURNED UPON REQUEST.

DWG TITLE
SHV AL6061 BLK ANOD SM15 BE NOSE

LEGACY
SM15-E0107

SCALE 1:2	DRAWN D. GATLE	DATE 12/05/2003	CHECKED	DATE 1800-01-02	SIZE B
DWG NO 105953				SHEET 1 of 1	REV 00