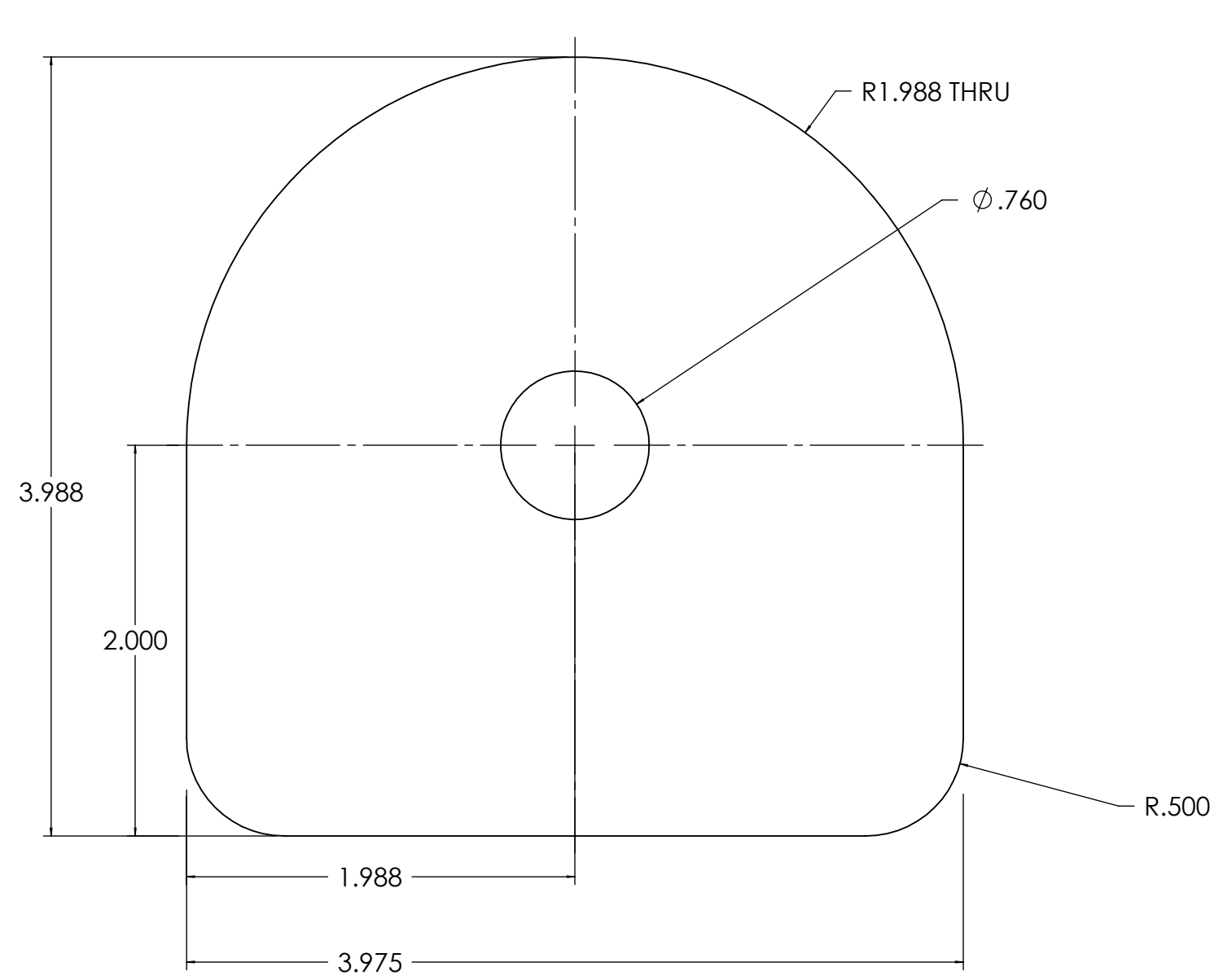
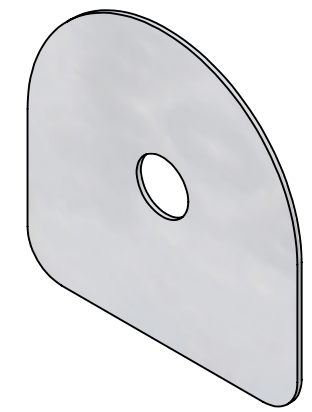


ITEM	QTY	PART NUMBER	LEGACY	DESCRIPTION	MATERIAL
1	1	105921	SM08-W0108	SPCR UHMW WH SM08 LW SHV	UHMW PE - WHITE

REVISIONS			
REV.	DESCRIPTION	BY	DATE
00	EPDM MIGRATION RELEASE WITH VISUAL PART ID	DEC	2023/06/01



GENERAL NOTES
 1. REMOVE ALL BURRS AND BREAK SHARP EDGES AND CORNERS .75mm [.03in] MAX.

UNLESS OTHERWISE SPECIFIED, DIMENSIONS ARE IN INCHES. TOLERANCES FOR ROUGH AND CLEAR OPENINGS ARE $\pm 3\text{mm}$ (.125"). ALL OTHERS ARE:

METRIC	X	.X	.XX	ANGLES
	± 1.25	$\pm .4$	$\pm .125$	$\pm 1^\circ$
IMPERIAL	.X	.XX	.XXX	ANGLES
	$\pm .03$	$\pm .015$	$\pm .005$	$\pm 1^\circ$



COPYRIGHT 2016 ADVANTEC GLOBAL INNOVATIONS. ALL RIGHTS RESERVED. CONFIDENTIAL PROPERTY OF ADVANTEC GLOBAL INNOVATIONS. UNAUTHORIZED USE, REPRODUCTION OR DISTRIBUTION IS STRICTLY PROHIBITED. COPIES REMAIN THE PROPERTY OF ADVANTEC GLOBAL INNOVATIONS AND MUST BE RETURNED UPON REQUEST.

DWG TITLE
 SPCR UHMW WH SM08 LW SHV

LEGACY
 SM08-W0108

SCALE	DRAWN	DATE	CHECKED	DATE	SIZE
1:1	D. GATLE	08/12/2003		1800-01-02	B
		DWG NO		SHEET	REV
		105921		1	1
				of 1	

