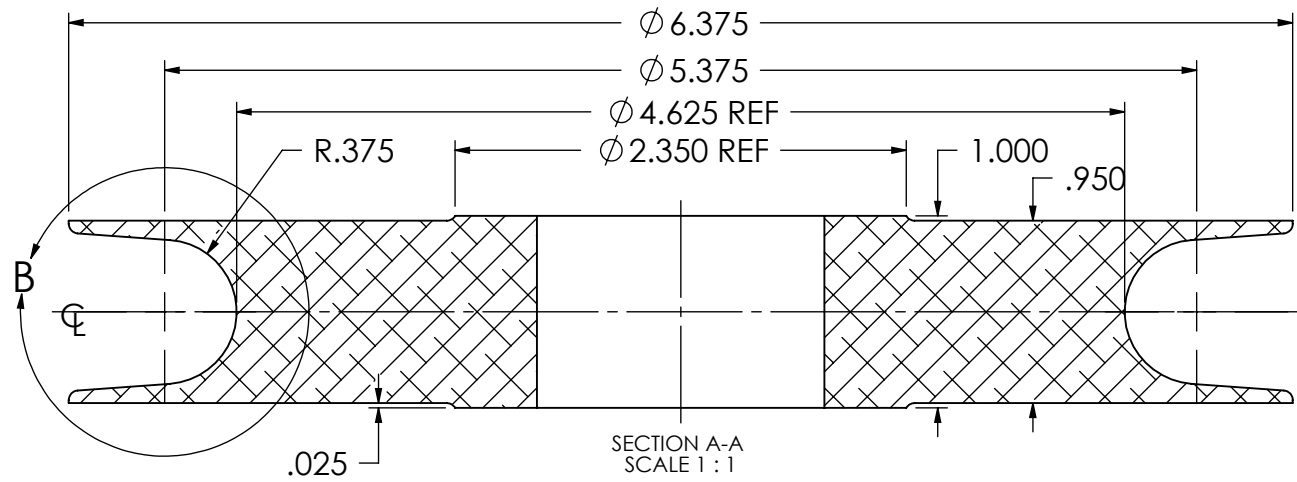
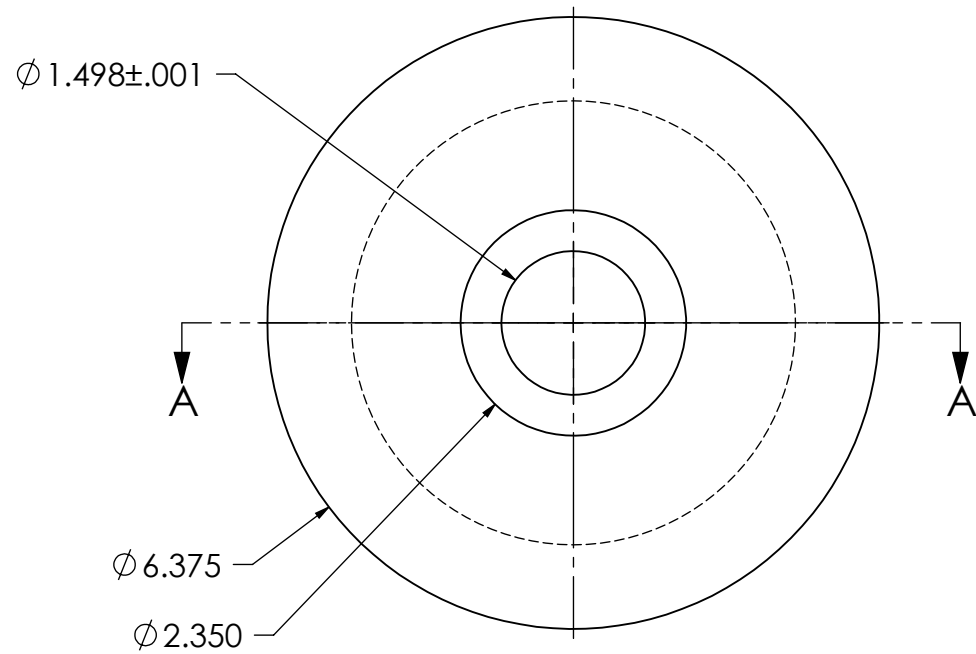
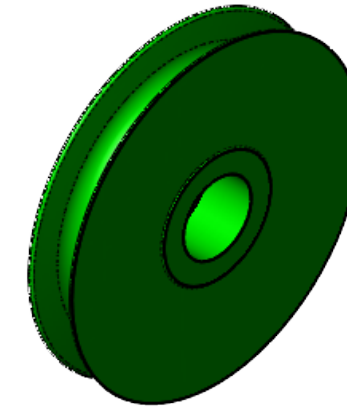


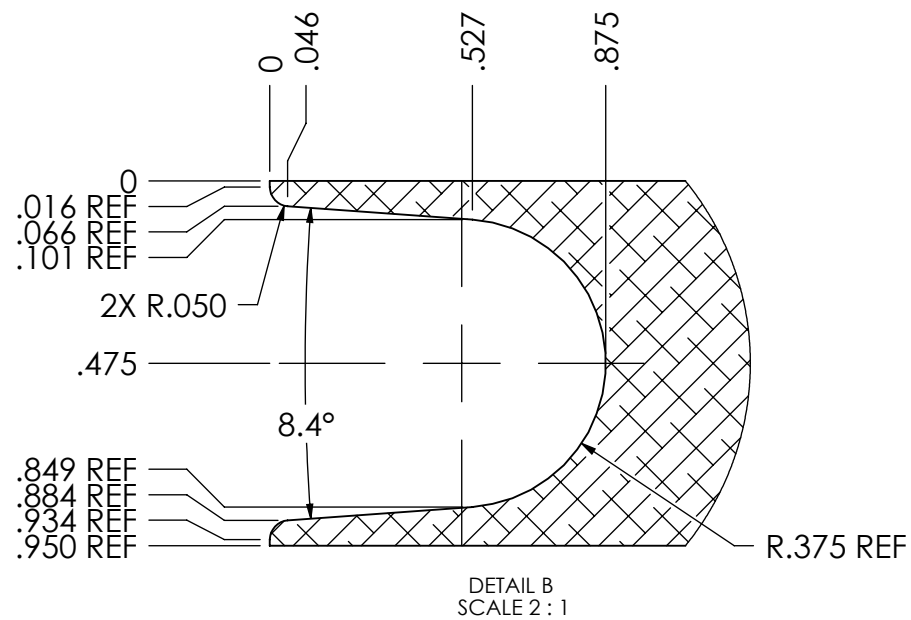
ITEM NO.	QTY.	PART NUMBER	LEGACY	DESCRIPTION	Material
1	1	105823	SHAR-E0101	SHV AL6061 BLK ANOD CT25 BE TIP	6061-T6 ALUMINUM

REVISIONS			
REV.	DESCRIPTION	BY	DATE
00	EPDM MIGRATION RELEASE WITH VISUAL PART ID	ASP	2023-04-18



- GENERAL NOTES**
- THIS PART REPLACES P/N'S SM25-E0107, CT25-AL-E0103
  - REMOVE ALL BURRS AND BREAK SHARP EDGES AND CORNERS .75mm [.03in] MAX.

METRIC	X	.X	.XX	ANGLES
	±1.25	±.4	±.125	±1°
IMPERIAL	.X	.XX	.XXX	ANGLES
	±.05	±.015	±.005	±1°



COPYRIGHT 2016 ADVANTEC GLOBAL INNOVATIONS. ALL RIGHTS RESERVED. CONFIDENTIAL PROPERTY OF ADVANTEC GLOBAL INNOVATIONS. UNAUTHORIZED USE, REPRODUCTION OR DISTRIBUTION IS STRICTLY PROHIBITED. COPIES REMAIN THE PROPERTY OF ADVANTEC GLOBAL INNOVATIONS AND MUST BE RETURNED UPON REQUEST.

DWG TITLE  
SHV AL6061 BLK ANOD CT25 BE TIP

LEGACY  
SHAR-E0101

SCALE	DRAWN	DATE	CHECKED	DATE	SIZE
1:2	G.R.	02/08/2007			B

DWG NO	SHEET	REV
105823	1 of 1	00