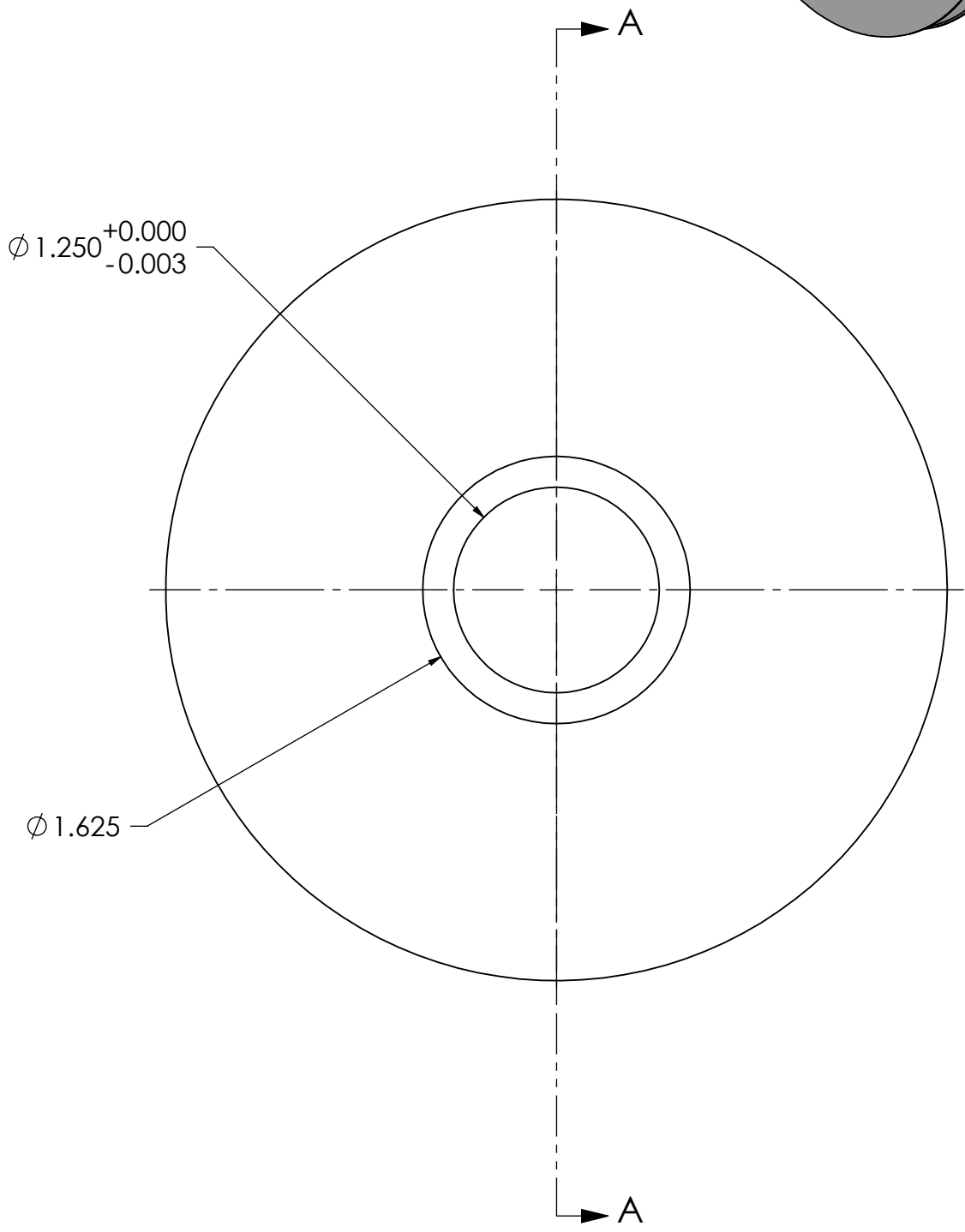
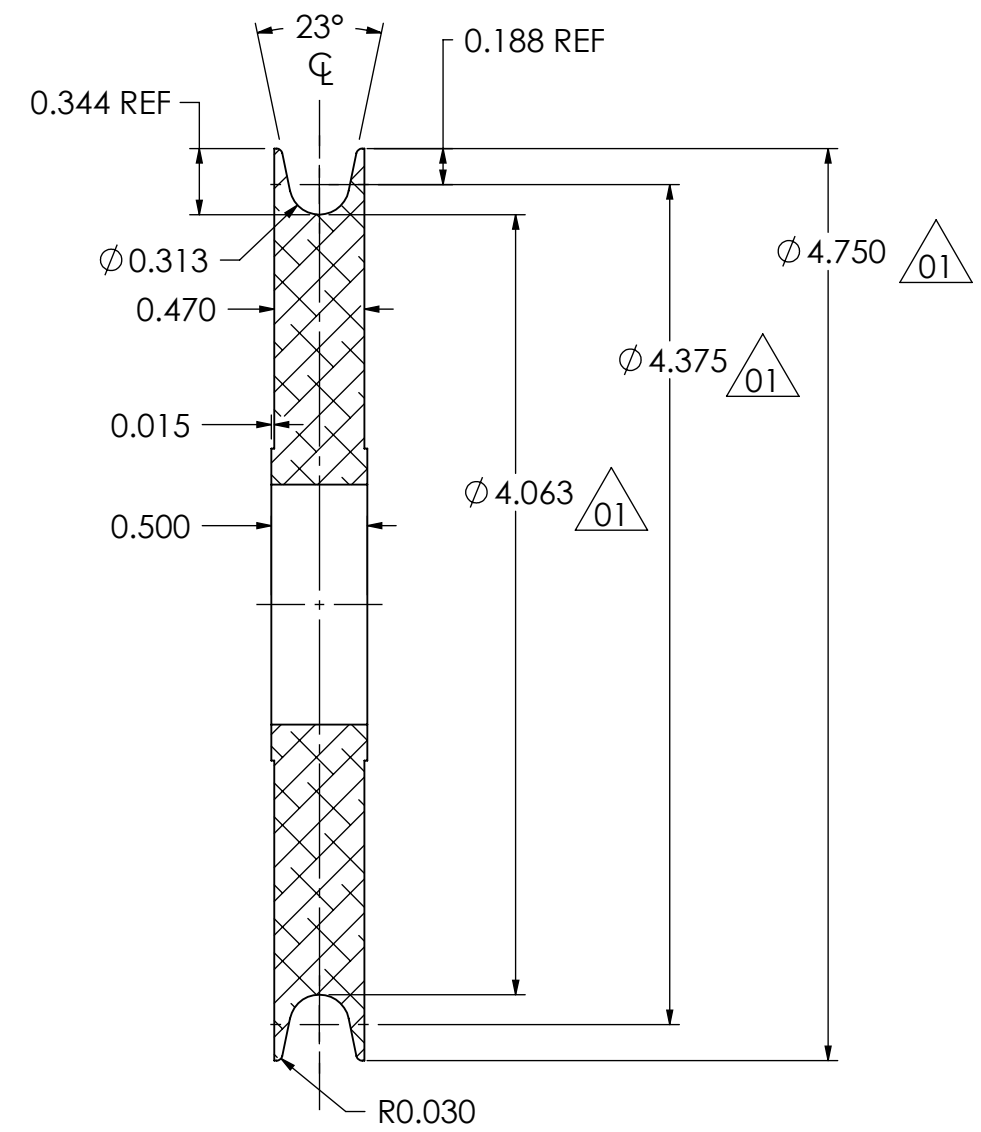
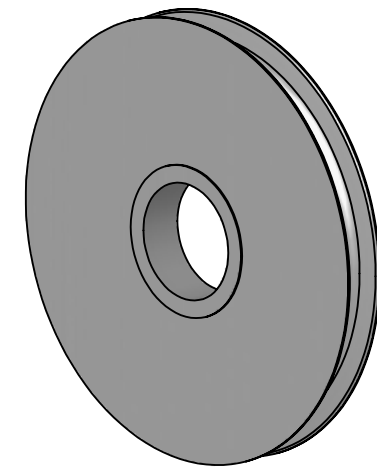


ITEM	QTY	PART NUMBER	LEGACY	DESCRIPTION	MATERIAL
1	1	105048	ES15-W0104	SHV AL6061 BLK ANOD ES15 LW	6061-T6 ALUMINUM

REVISIONS			
REV.	DESCRIPTION	BY	DATE
00	EPDM MIGRATION RELEASE WITH VISUAL PART ID	DEC	2023-07-04
01	OD CHANGED FROM 4.95" TO 4.75	ASP	2023-08-09



SECTION A-A
SCALE 1 : 1

GENERAL NOTES
 1. REMOVE ALL BURRS AND BREAK SHARP EDGES AND CORNERS .75mm [.03in] MAX.
 2. PRODUCTION DETAILS

QUANTITY	
MATERIAL	6061-T6 ALUMINUM
WEIGHT	0.678LBS
PROCESS	<ul style="list-style-type: none"> CUT FROM BAR STOCK MACHINE BLACK ANODIZE

UNLESS OTHERWISE SPECIFIED, DIMENSIONS ARE IN INCHES.

	X	.X	.XX	ANGLES
METRIC	±1.25	±.4	±.125	±1°
IMPERIAL	.X	.XX	.XXX	ANGLES
	±.03	±.015	±.005	±1°



COPYRIGHT 2016 ADVANTEC GLOBAL INNOVATIONS. ALL RIGHTS RESERVED. CONFIDENTIAL PROPERTY OF ADVANTEC GLOBAL INNOVATIONS. UNAUTHORIZED USE, REPRODUCTION OR DISTRIBUTION IS STRICTLY PROHIBITED. COPIES REMAIN THE PROPERTY OF ADVANTEC GLOBAL INNOVATIONS AND MUST BE RETURNED UPON REQUEST.

DWG TITLE
SHV AL6061 BLK ANOD ES15 LW

LEGACY
ES15-W0104

SCALE	DRAWN	DATE	CHECKED	DATE	SIZE
1:1	D.H.	12/07/2007			B

DWG NO	SHEET	REV
105048	1 of 1	01