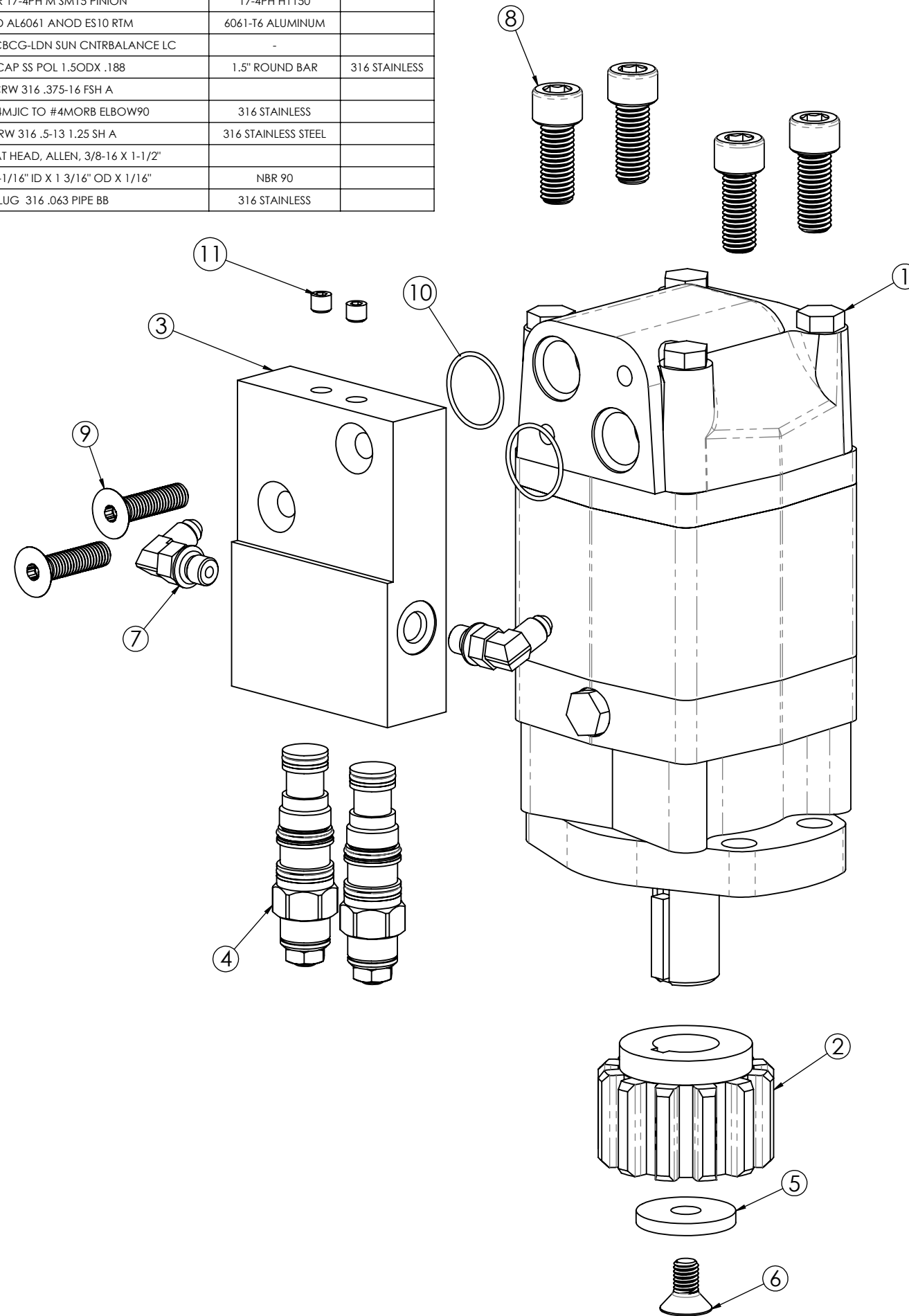


ITEM NO.	QTY.	PART NUMBER	LEGACY	DESCRIPTION	MATERIAL	GRADE
1	1	ES10-U0101	ES10-U0101	MTR ES10 SAUER DANFOSS, HYD		
2	1	106012	SM15-Z0101	GEAR 17-4PH M SM15 PINION	17-4PH H1150	
3	1	104212	ES10-J0101	MNFLD AL6061 ANOD ES10 RTM	6061-T6 ALUMINUM	
4	2	105824	SHAR-H0010	VALVE T-11A CBCG-LDN SUN CNTRBALANCE LC	-	
5	1	112499	ES10-Z0123	PIN-CAP SS POL 1.5ODX .188	1.5" ROUND BAR	316 STAINLESS
6	1	105179	FAST-FHS0120	SCRW 316 .375-16 FSH A		
7	2	105289	HYDR-E40020	FIT 316 #4MJIC TO #4MORB ELBOW90	316 STAINLESS	
8	4	105268	FAST-SHC0190	SCRW 316 .5-13 1.25 SH A	316 STAINLESS STEEL	
9	2	FAST-FHS0140	FAST-FHS0140	SCREW, FLAT HEAD, ALLEN, 3/8-16 X 1-1/2"		
10	2	ORING-2-023		O RING 1-1/16" ID X 1 3/16" OD X 1/16"	NBR 90	
11	2	105226	FAST-M0040	PLUG 316 .063 PIPE BB	316 STAINLESS	



REVISIONS

REV.	DESCRIPTION	BY	DATE
00	EPDM MIGRATION RELEASE WITH VISUAL PART ID	DEC	2023-06-09

GENERAL NOTES

- REMOVE ALL BURRS AND BREAK SHARP EDGES AND CORNERS .75mm [.03in] MAX.

UNLESS OTHERWISE SPECIFIED, DIMENSIONS ARE IN INCHES. TOLERANCES FOR ROUGH AND CLEAR OPENINGS ARE ±3mm (.125"). ALL OTHERS ARE:

METRIC	X	.X	.XX	ANGLES
	±1.25	±.4	±.125	±1°
IMPERIAL	.X	.XX	.XXX	ANGLES
	±.03	±.015	±.005	±1°



COPYRIGHT 2016 ADVANTEC GLOBAL INNOVATIONS. ALL RIGHTS RESERVED. CONFIDENTIAL PROPERTY OF ADVANTEC GLOBAL INNOVATIONS. UNAUTHORIZED USE, REPRODUCTION OR DISTRIBUTION IS STRICTLY PROHIBITED. COPIES REMAIN THE PROPERTY OF ADVANTEC GLOBAL INNOVATIONS AND MUST BE RETURNED UPON REQUEST.

DWG TITLE
ASSY ES10 RTM

LEGACY
ES10-J0100

SCALE	DRAWN	DATE	CHECKED	DATE	SIZE
1:2	G.R.			1800-01-02	B
DWG NO 104947				SHEET 1 of 1	REV