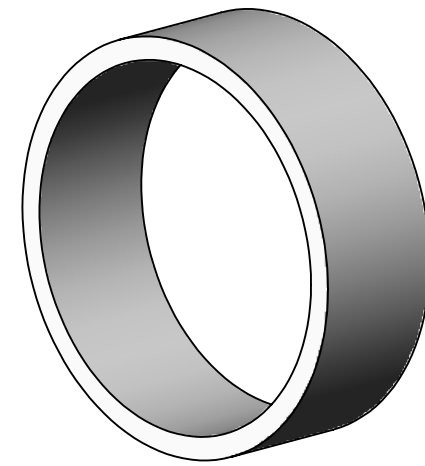
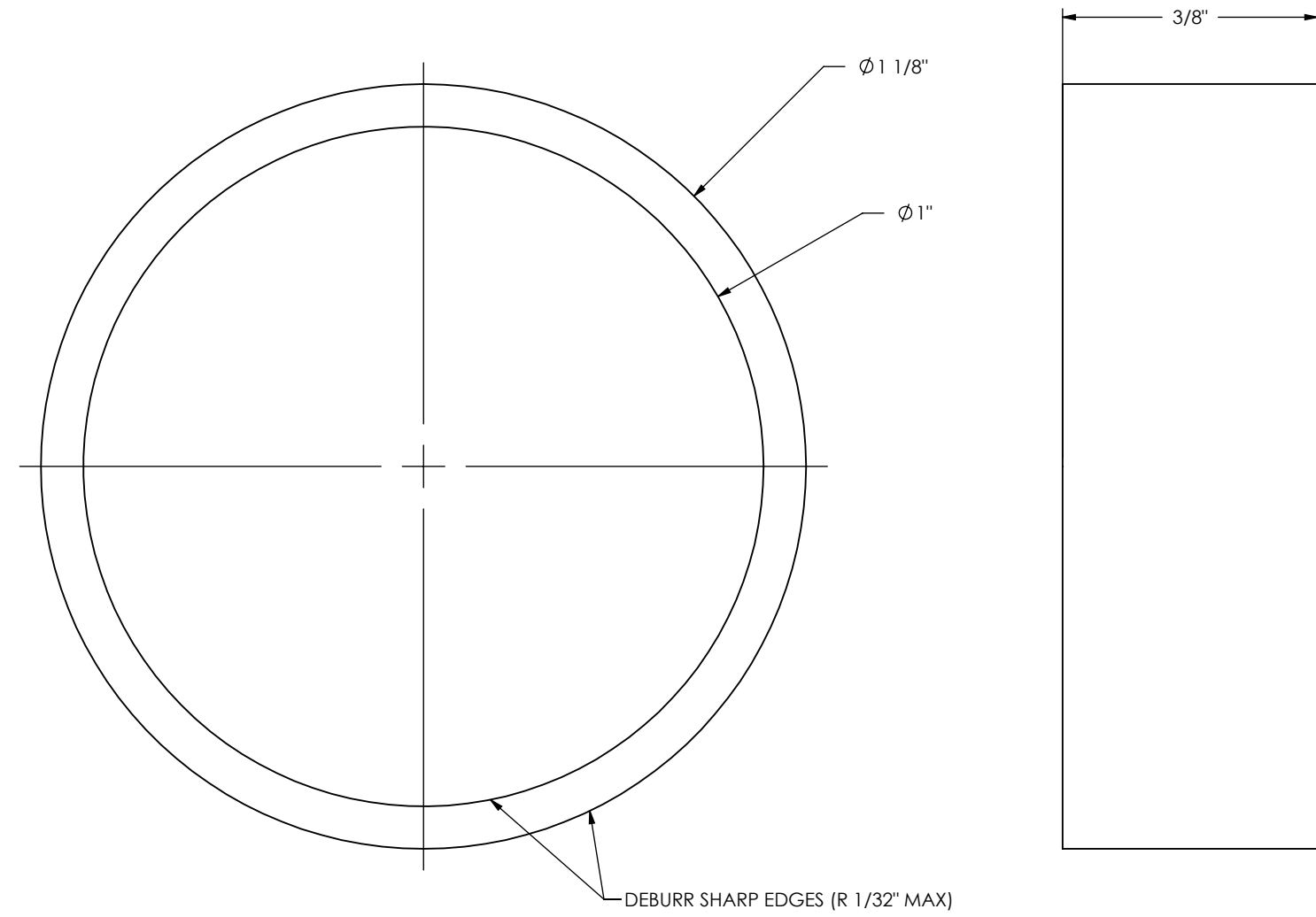


ITEM NO.	QTY.	PART NUMBER	LEGACY	DESCRIPTION	Material
1	1	104275	SM15-E0113	BUSH FCJ GRN 1ID 1.1250Dx.375	CJ COMPOSITE

REVISIONS			
REV.	DESCRIPTION	BY	DATE
1	EPDM MIGRATION RELEASE WITH VISUAL PART ID	DEC	2023-05-13



- GENERAL NOTES**
1. REMOVE ALL BURRS AND BREAK SHARP EDGES AND CORNERS .75mm [.03in] MAX.
 2. UNLESS OTHERWISE SPECIFIED TOLERANCES ARE: [+/-] 1/32"
 3. PART DIMENSIONS CONTROLLED BY DIGITAL DATA FILE.
 4. CLEAN UP ALL HOLE EDGES TO PREVENT SCRATCHES ON ADJACENT PARTS
 5. UNLESS OTHERWISE SPECIFIED, ALL MACHINED SURFACES $\sqrt{63}$

UNLESS OTHERWISE SPECIFIED, DIMENSIONS ARE IN MILLIMETERS. TOLERANCES FOR ROUGH AND CLEAR OPENINGS ARE $\pm 3\text{mm}$ (.125"). ALL OTHERS ARE:

METRIC	X	.X	.XX	ANGLES
	± 1.25	$\pm .4$	$\pm .125$	$\pm 1^\circ$
IMPERIAL	.X	.XX	.XXX	ANGLES
	$\pm .05$	$\pm .015$	$\pm .005$	$\pm 1^\circ$



COPYRIGHT 2016 ADVANTEC GLOBAL INNOVATIONS. ALL RIGHTS RESERVED. CONFIDENTIAL PROPERTY OF ADVANTEC GLOBAL INNOVATIONS. UNAUTHORIZED USE, REPRODUCTION OR DISTRIBUTION IS STRICTLY PROHIBITED. COPIES REMAIN THE PROPERTY OF ADVANTEC GLOBAL INNOVATIONS AND MUST BE RETURNED UPON REQUEST.

DWG TITLE
**BUSH FCJ GRN 1ID
1.1250Dx.375**

LEGACY
SM15-E0113

SCALE	DRAWN	DATE	CHECKED	DATE	SIZE
4:1	G.R.			1800-01-02	B

DWG NO	SHEET	REV
104275	1 of 1	0

