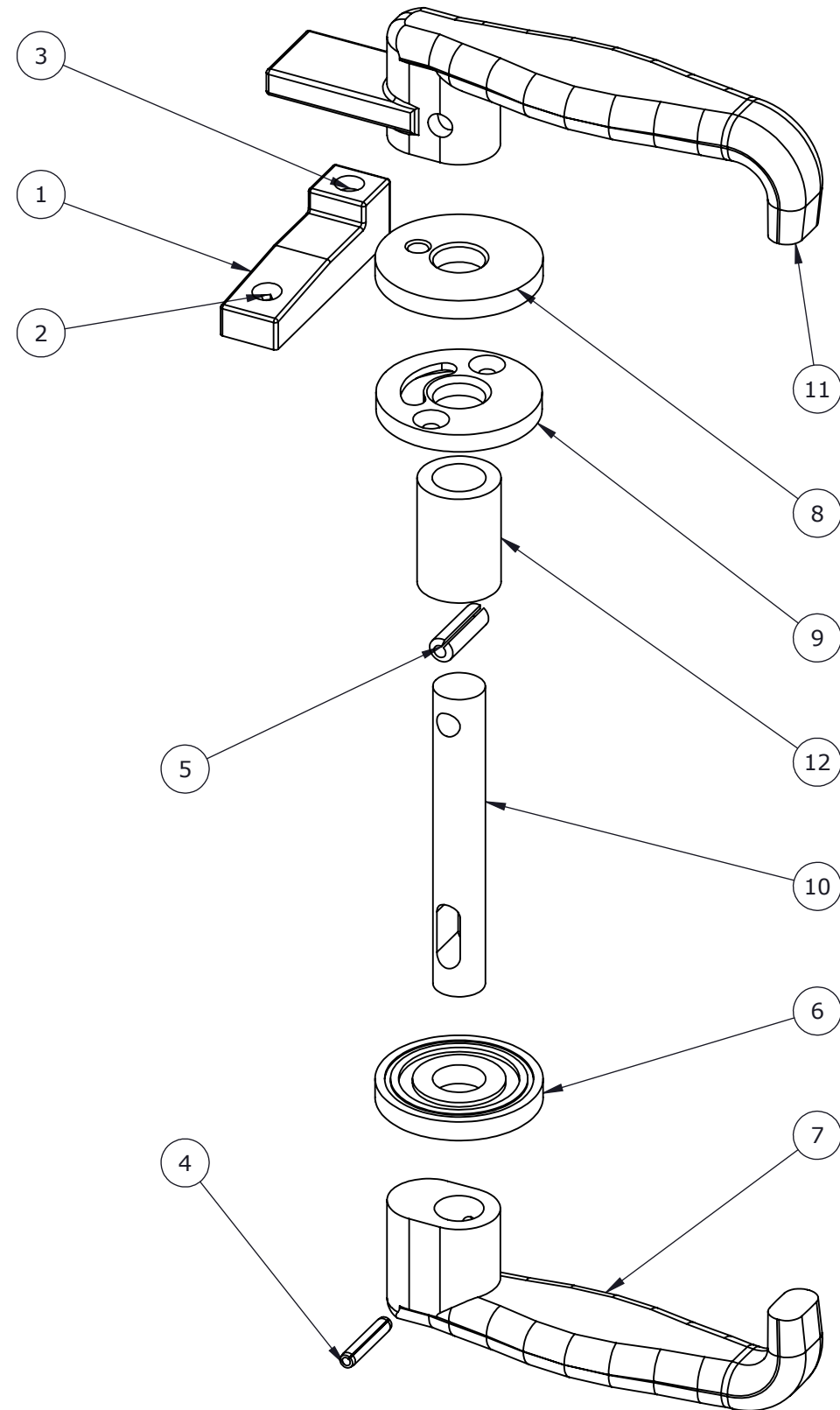
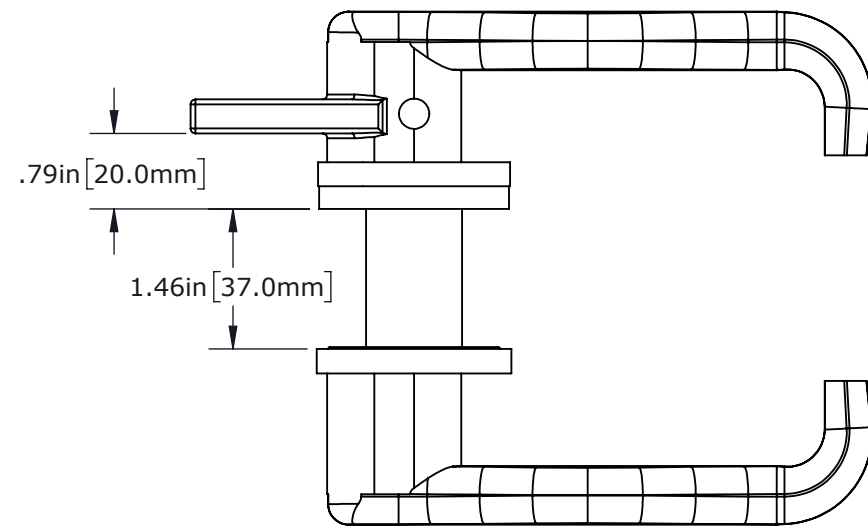


ITEM NO.	QTY.	PART NUMBER	Description	LEGACY PART.NO
1	1	103509	STRIKER, DSG BLACK DELRIN	D11129
2	1	100087	Flathead, Robertson, Machine Screw 10/24 x 1/2", 18.8SS Electr	D10942
3	1	106874	FH Rob Sheet Metal 8 x 3/4 IN, 18.8SS	FAFHS3051
4	1	100157	PIN SPRING DIA .188 X 1	D10948
5	1	104577	SPLIT PIN 5/16 X 1", 18.8SS	FAMI3751
6	1	103090	DOG NYL BLK CUST WASH	D10992
7	1	104506	DOG NYL BLK OUTSIDE	D12005
8	1	104501	DOG NYL BLK 1 HOLE WASH	D11857
9	1	104589	DOG LIMITER ROSETTE	FAWADIA002
10	1	104617	-- DOG 316 M SHAFT 150	HW-LS6019
11	1	103503	150 INNER DOG HANDLE NYLON	D11295
12	1	104592	DOG NYL BLK 1.44IN BUSH	HWCUDIA016



REVISIONS

REV.	DESCRIPTION	BY	DATE
1	DWG NO. CORRECTED	KT	7/20/21
2	UPDATED MODEL/BOM	KT	11/19/21
3	BUSHING UPDATED	GG	3/16/2023

GENERAL NOTES

- REMOVE ALL BURRS AND BREAK SHARP EDGES AND CORNERS .75mm [.03in] MAX.

UNLESS OTHERWISE SPECIFIED, DIMENSIONS ARE IN MILLIMETERS. TOLERANCES FOR ROUGH AND CLEAR OPENINGS ARE $\pm 3\text{mm}$ (.125"). ALL OTHERS ARE:

METRIC	X	.X	.XX	ANGLES
	± 2.5	$\pm .8$	$\pm .25$	$\pm 2^\circ$
IMPERIAL	.X	.XX	.XXX	ANGLES
	$\pm .1$	$\pm .03$	$\pm .010$	$\pm 2^\circ$

BAR CODE CAGE CODE



COPYRIGHT 2016 ADVANTEC GLOBAL INNOVATIONS. ALL RIGHTS RESERVED. CONFIDENTIAL PROPERTY OF ADVANTEC GLOBAL INNOVATIONS. UNAUTHORIZED USE, REPRODUCTION OR DISTRIBUTION IS STRICTLY PROHIBITED. COPIES REMAIN THE PROPERTY OF ADVANTEC GLOBAL INNOVATIONS AND MUST BE RETURNED UPON REQUEST.

DWG TITLE
DOG NYL BLK 150 A37-B20 -
PURCHASED

SCALE	DRAWN	DATE	CHECKED	DATE	SIZE
1:4	AS	10/23/2020			B
S.O. NO	DWG NO	SHEET	REV		
	103506	1 of 1	3		