

Ka Lamp M

ASSEMBLY INSTRUCTIONS



Scan for more languages

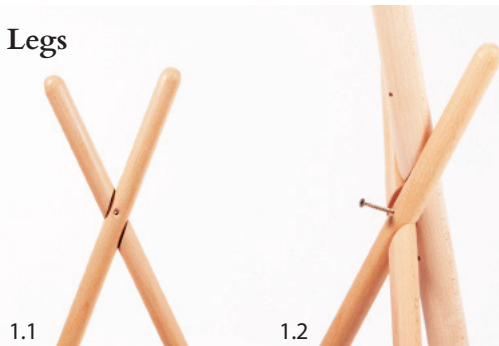
Woodendot
LIVE DESIGN

Ka M parts

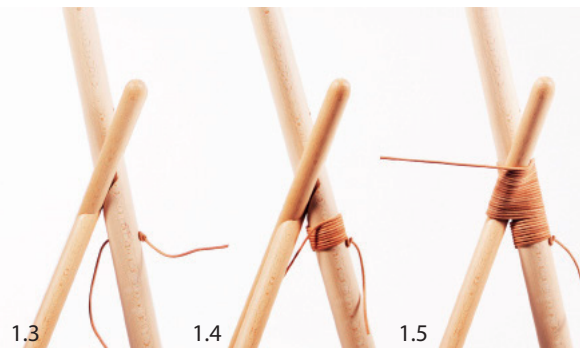


- 1 Metal lampshade
- 4 Wooden sticks
- 1 Leather cord
- 2 Wooden cylinders
- 2 Screws
- 1 Bulb
- 1 Leather shelf (Ka M Functional only)

1. Legs

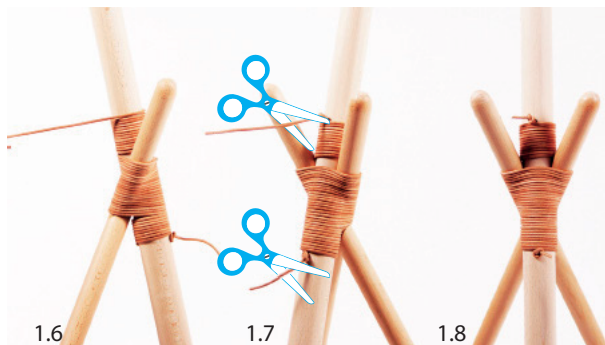


- 1.1 - Join the two thin legs.
- 1.2 - Join the two legs with the thick one, and fix the position using the screw.



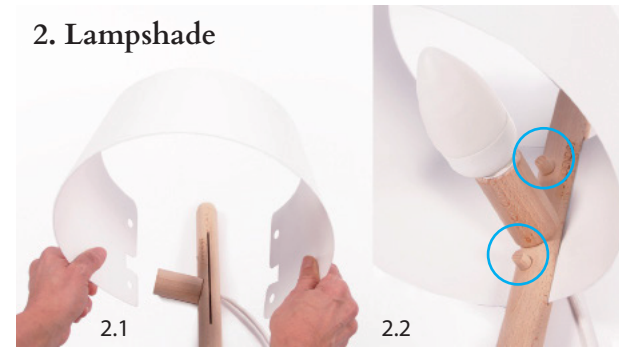
- 1.3 - Tie a knot at one end.
- 1.4 - Turn between 9 and 12 times in the bottom area.
- 1.5 - Turn between 20 and 24 times in the middle area, around the three sticks.

IMPORTANT: Must be tightly fitted.



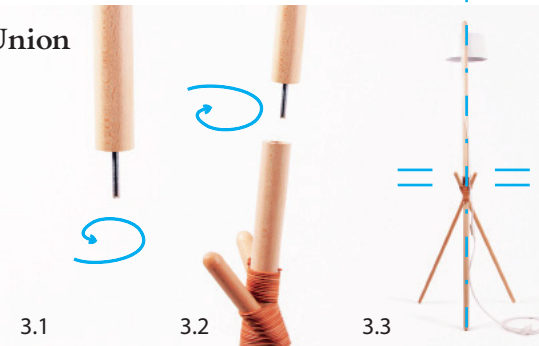
- 1.6 - Turn between 12 and 15 times in the upper area.
- 1.7 - Tie a knot and cut the leather cord.
- 1.8 - Final outcome.

2. Lampshade



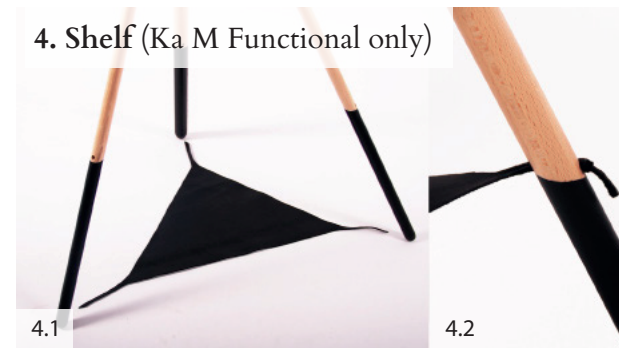
- 2.1 - Introduce the metal lampshade in the stick carefully.
IMPORTANT: Be careful not to force it, you could make marks.
- 2.2 - Introduce the wooden cylinders and the bulb.

3. Union



- 3.1 - Introduce the screw at one end.
- 3.2 - Join the two parts.
- 3.3 - **IMPORTANT: Thread without forcing. Look the right position at 3.3.**

4. Shelf (Ka M Functional only)



- 4.1 - Position the leather shelf.
- 4.2 - Introduce the end and tie a knot. Repeat the operation in the other legs.