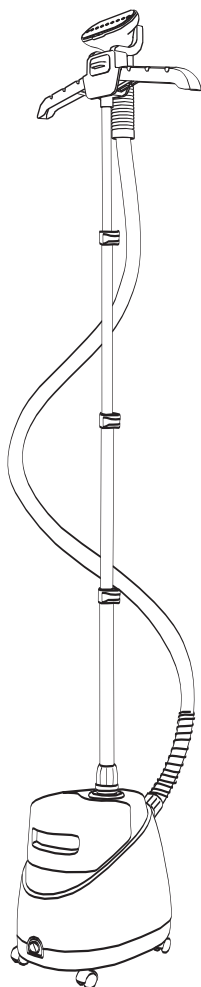




# GARMENT STEAMER

INSTRUCTION MANUAL

MODEL NO.:SAG-11W/SAG-11B



PLEASE READ ALL INSTRUCTION CAREFULLY BEFORE USING



## **IMPORTANT SAFETY INSTRUCTIONS**

1. Read all instruction carefully and keep this manual for future reference.
2. To reduce the risk of contact with hot water emitting for steam vents, check appliance before each use by holding it away from body and operating steam button.
3. Use appliance only for its intended use.
4. To reduce the risk of electric shock, do not immerse the appliance in water or other liquids.
5. Never pull cord to disconnect from outlet; instead, grasp plug and pull to disconnect.
6. Do not let the cord hang over the edge of a table or counter.
7. Do not allow cord to touch hot surfaces. Let appliance cool completely before putting away. Loop cord loosely around appliance when storing.
8. Always disconnect appliance from electrical outlet when filling with water or emptying, and when not in use.
9. Do not operate appliance with a damaged cord, or if the appliance has been dropped or damaged. To reduce the risk of electric shock, do not disassemble or attempt to repair the appliance.
10. Return to our Service Centre for examination and repair. Incorrect reassembly or repair could cause a risk of fire, electric shock, or injury to persons when the appliance is used.
11. Do not leave appliance unattended while connected. Always keep the appliance away from children.
12. Burns could occur from touching hot metal parts, hot water, or steam. Use care when you turn a steam appliance upside down there may be hot water in the reservoir.
13. Never drop or insert any object into any opening or hose.
14. Do not use outdoors or operate where aerosol (spray) products are being used or where oxygen is being administered.
15. Surfaces of this appliance may be hot when in use. Do not let eyes or bare skin touch heated surfaces.
16. Do not place the steam nozzle directly on any surface or on the appliance power cord while it is hot or plugged in. Use the stand provided.
17. Unplug this appliance before filling or emptying. Do not overfill.
18. Always keep the hose and nozzle elevated above the water container.
19. To reduce likelihood of circuit overload, do not operate another high wattage appliance on the same circuit.

20. Do not use an extension cord to operate the appliance. If an extension cord is absolutely necessary, a 10-ampere rated cord should be used. Cords rated for less amperage may overheat. Care should be taken to arrange the cord so that the cord cannot be pulled or tripped over.
21. Never pour water directly into reservoir. Pour water in water tank only.
22. When changing attachments, please be sure the unit is off and no steam is being released to avoid contact with hot water.
23. Use caution when changing attachments as they may contain hot water form condensation. Ensure the attachments are dry or cooled off to avoid contact with hot water.
24. Please check the power cord & the plug firstly to see if they are normal, and check the body to see if there is any cracks or damages. If there is any abnormal, please call the customer service hotline for assistance.
25. Do not spray any detergent such as bug or mosquito killer into the steamer to prevent it from damages to the plastic material.
26. The appliance is for household use only. Do not use at outdoors or for any commercial or industrial purpose.
27. This appliance is not intended for use by persons (including children) with reduced physical, sensory or mental capabilities, or lack of experience and knowledge, unless they have been given supervision or instruction concerning use of the appliance by a person responsible for their safety.
28. Children should be supervised to ensure that do not play with the appliance.
29. Do not operate the steamer without filling the water reservoir. Always check the water level before and during operation.
30. Move the appliance by grasping the telescopic pole. Do not force the casters if they are stuck. Turn off the unit, drain the water tank and water reservoir before inspecting the casters.
31. Allow the appliance to cool completely for at least 30 minutes and drain the water tank and water reservoir before storage.

## **PARTS DESCRIPTION**

### **COMPONENTS:**

1. Steam Nozzle Holder
2. Telescopic Pole
3. Steam Nozzle
4. Handle
5. Hose
6. Water Tank
7. Water Reservoir
8. Switch
9. Wheel
10. Hose Base
11. Pole Base
12. 360° Swivel Hanger
13. Swivel Connector
14. Fabric Brush

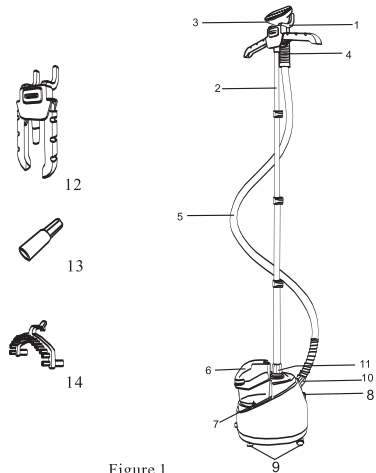


Figure 1

## **SPECIFICATIONS**

Water Tank Capacity: 1.6 L

Steam Output Time: 45 seconds

Input Voltage: 120V ~ 60Hz

Output Power: 1500W

## **ASSEMBLY INSTRUCTIONS:**

1. Connect the Swivel Connector to the 360° Swivel Hanger (Figure 2).
2. Put the clothes hanger hook onto the top telescope pole along the alignment as shown in Figure 3.
3. Pull up the two bars of the Folding Rack until their supporting bars lock in place (Figure 4)
4. To collapse the Folding Rack, press the supporting bars, and the two bars of the Folding Rack will fold down.
5. Insert the bottom of the telescope pole into the pole base as shown in Figure 5.
6. Turn the pole base lock clockwise until tightened.
7. Loosen the clips on the telescope pole. Pull the whole pole to its full extension and tighten the clips.
8. Put the Hose onto the threaded Hose Base by turning the fitting on the end of the Hose clockwise (See Figure 5). Hands tighten only. Avoid over-tighten.
9. Hang the Steam Nozzle on the Steam Nozzle Holder as shown in Figure 6.

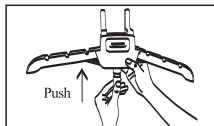


Figure 2

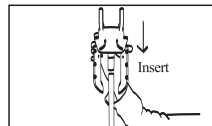


Figure 3

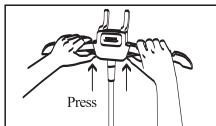


Figure 4

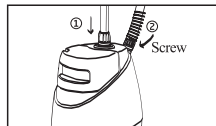


Figure 5



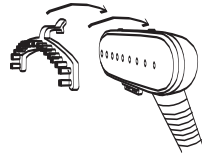
Figure 6

**CAUTION:**

- 1) Always hang the Steam Nozzle on the steam nozzle holder when not in use to prevent steam from causing bodily injury or damage to surfaces.
- 2) The telescopic pole must be fully extended during steam operation to ensure smooth lining of the hose and provide a free flow of steam.
- 3) Do not pull the hose with excessive force or damage will occur and causing steam leakage. Do not move the appliance by grasping the hose.

**FABRIC BRUSH / PANTS PRESS ASSEMBLY:**

1. Turn off the steamer and wait until no steam emits from the Steam Nozzle.
2. Connector the Fabric Brush / Pant Press to the Steam Nozzle till it is firm in place.



**CAUTION:**

Do not install the accessories while steam emitting from the Steam Nozzle to avoid scald.

**INSTRUCTIONS FOR USE**

1. Unplug the Power Cord, and turn the Switch to the “Off” position.
2. Remove the Water Tank, turn it upside down, and unscrew the Valve Cap (See Figure 8). Fill the Water Tank with cool water, and replace the Valve Cap. Do not use hot water. To prolong the lifetime of your steamer, we recommend using distilled or de-mineralized water. Place the water tank back into the unit and make sure it is sitting properly and securely in the cavity. Do not let the steamer operate with a dry water tank, or the damage to the unit could occur.
3. Plug the unit into a properly outlet.
4. Turn on the Switch. Verify that the light on the switch is illuminated. Steam should start flowing from the Nozzle in approximately 45 seconds.
5. When you are finishing with your steaming session place the switch in the “Off” position and remove the plug from the outlet.

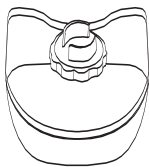


Figure 7

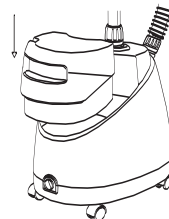


Figure 8

## **PRESSING WITH STEAM**

1. To steam a garment, place it on a clean, rust-free clothes hanger and place the hanger on the Clothes Hanger Hook.
2. Grasp the Handle, and place the Steam Nozzle at the bottom of the garment. Steam will rise along the inside and outside of the fabric, removing wrinkles. Slowly slide the nozzle vertically, from the bottom to the top (See Figure 10 & 11 of the garment. Do not allow kinks to form in the hose at any time.
3. Remove the nozzle from bottom to top on the garment, and smooth the fabric with your free hand.
4. Repeat steps 2 and 3 as necessary until the fabric is wrinkled free.
5. Curtains and draperies can be steamed while still hanging .
6. Heavier fabrics may require repeated steaming.
7. To remove stubborn wrinkles, the Fabric Brush may also be used.
8. Be careful when handling garments on the Clothes Hanger Hook. Pulling on the garment with too much force may cause the unit to tip.

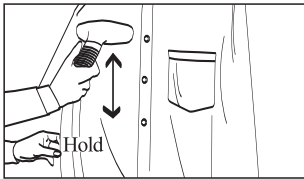


Figure 9

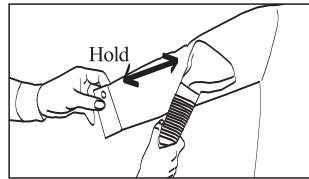


Figure 10

## **CLEANING AND STORAGE:**

We recommend you follow this procedure at least once per week.

1. Turn the Switch to “OFF”.
2. Unplug the unit from the power outlet.
3. Allow the steamer to cool for at least 30 minutes.
4. Remove the Hose and shorten the Telescopic Pole, then set them aside Drain Plug
5. Remove and drain the Water Tank. Rinse the water tank with fresh water, and drain completely. Place the Water Fill Tank back on the Water Reservoir.
6. Drain the steamer by removing the Drain Plug (at the bottom of the Main Body) and emptying the contents.
7. Flush the unit by filling the Water Reservoir and the Hose Connector with fresh water and draining completely. Replace the Drain Plug.
8. Wrap the Hose around the Telescopic Pole one time. Place the Steam Nozzle on the steam nozzle holder.
9. Store in a cool, dry place.

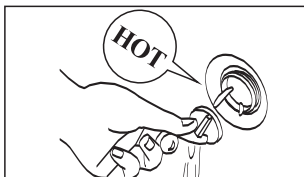


Figure 11

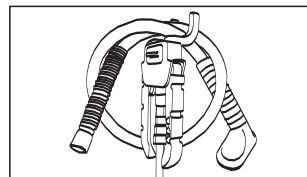


Figure 12

## **REMOVING MINERAL BUILD-UP**

One common problem with steamer is mineral build-up caused by a high mineral in many municipal water suppliers. Mineral residue inside of the internal pipes and heater can cause intermittent steaming or, in some cases, no steaming at all. According to the water quality in different regions, we advise you to remove the mineral build-up after using 7-15 days. Please take a reference of the following procedure.

The procedure below can be used to reduce mineral build-up. If you are unable to use de-mineralized or distilled water, we recommend you follow this procedure monthly.

1. Turn the unit off, and unplug the power cord.
2. Remove the hose and pole from the unit.
3. Drain the Water Reservoir, and empty water from the Water Tank.
4. Mix a solution of 50% vinegar and 50% water. In most cases, 2 cups of this solution will be sufficient.
5. Slowly pour the water-vinegar solution into the Hose Connector.
6. If standing the water-vinegar solution becomes visible in the Water Reservoir's inlet hole, continue to pour to solution into the Hose Connector until the Water Reservoir is about half-full, near the top of hose.
7. Allow standing for 40 minutes.
8. Drain the solution out of the Water Reservoir by removing the drain plug and allowing the liquid to drain into a sink or tub.
9. Drain the solution out of the Hose Connector by tilting the unit over a sink or tub and pouring the water out of the Hose Connector.
10. Pour clean water in the Hose Connector and Water Reservoir inlet, and drain. Repeat this step until the vinegar odor dissipates.
11. Reassemble the unit and operate normally.

**If this procedure does not return the unit normal operation, the unit may need servicing.**



## **PROBLEM AND SOLUTIONS:**

<b>PROBLEM</b>	<b>REASON</b>	<b>SOLUTION</b>
The unit fails to steam.	Steamer is not plugged in.	Plug into electrical outlet.
Two Indicating lamps do not illuminate.	Household Circuit Breaker/Ground Fault Interrupter is tripped or Fuse is blown.	Check the power outlet. If you need assistance, contact a qualified electrician.
The unit fails to steam. Indicating lamps illuminate.	Mineral build-up in the unit.	Follow the <b>Removing Mineral Build-up</b> .
	The Water Tank is empty.	Refill the Water Tank.
Excessive gurgling of Hose and Steam Nozzle.	Condensation in hose.	Some gurgling is a natural effect of the steam process.  For excessive gurgling, extend the hose vertically to allow water to drain back into the Water Reservoir.
Steam is intermittent.	Mineral build-up in the unit.	It's normal for the unit to periodically stop steaming for a few seconds. If the steam stays off for longer periods, follow the <b>Removing Mineral Build-up</b> procedure.

### **Caution:**

- 1) This appliance is not intended for use by persons (including children) with reduced physical, sensory or mental capabilities, or lack of experience and knowledge, unless they have been given supervision or instruction concerning use of the appliance by a person responsible for their safety.
- 2) Children should be supervised to ensure that they do not play with the appliance.
- 3) It shall not spray liquid or steam into the electrical components of the appliance during use.