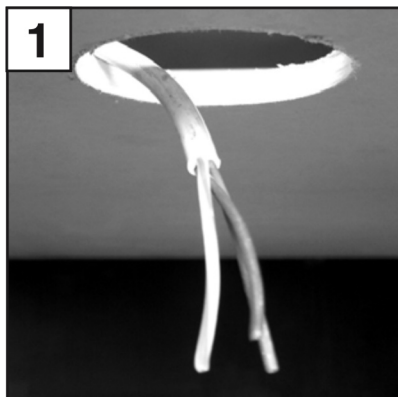
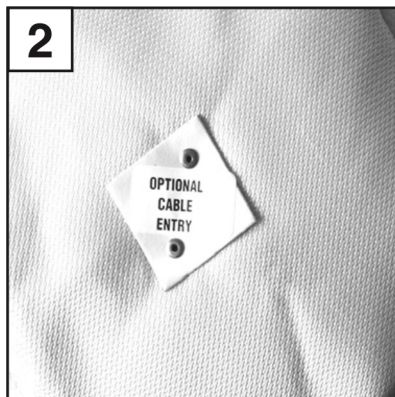


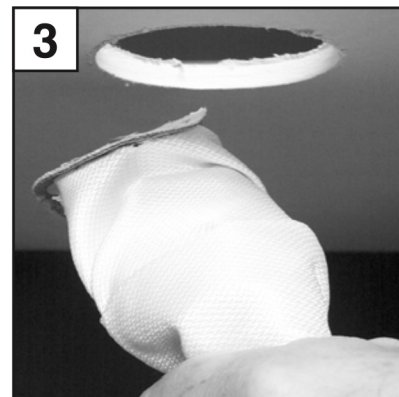
FITTING INSTRUCTIONS



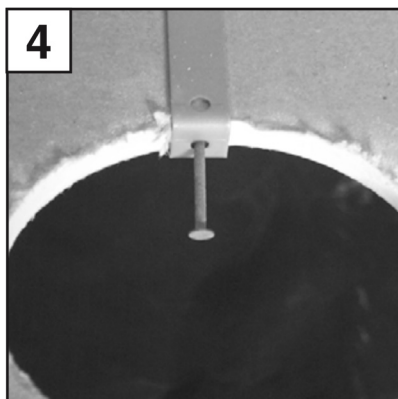
1 Lead the cable through the previously-cut speaker fitting aperture.



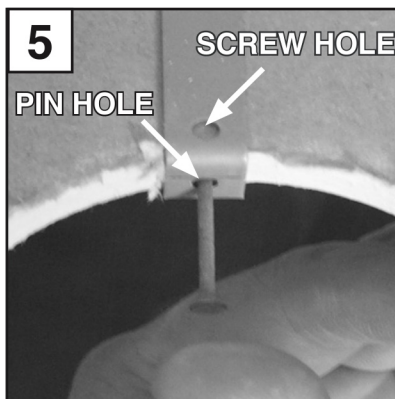
2 Cable entry can be under the speaker cover or through the marked entry hole on the side.



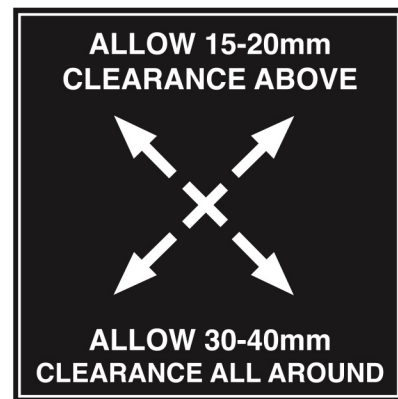
3 Grasp the cover by its sides and squeeze it inwards to reduce its bulk. Then push it through the aperture with its top uppermost, ensuring that a grip on the fitting clips is maintained throughout the process.



4 The new fast-fixing clip attached to the speaker covers. This clip attaches the speaker cover to the ceiling.



5 Whilst holding a fitting clip, align the pin hole with 12mm plasterboard and push one of the supplied fixing pins through the hole and into the plasterboard until fastened in place. Use optional No.6 screws in 9mm plasterboard.



Using a blunt object push the speaker cover to open it up completely. Allow 15-20mm clearance above the cover and 30 - 40mm clearance all around.