

Island Falls

ADJUSTABLE MASSAGE HAND SHOWER
& SUNFLOWER SHOWERHEADS

ShowerTek

Model ST300

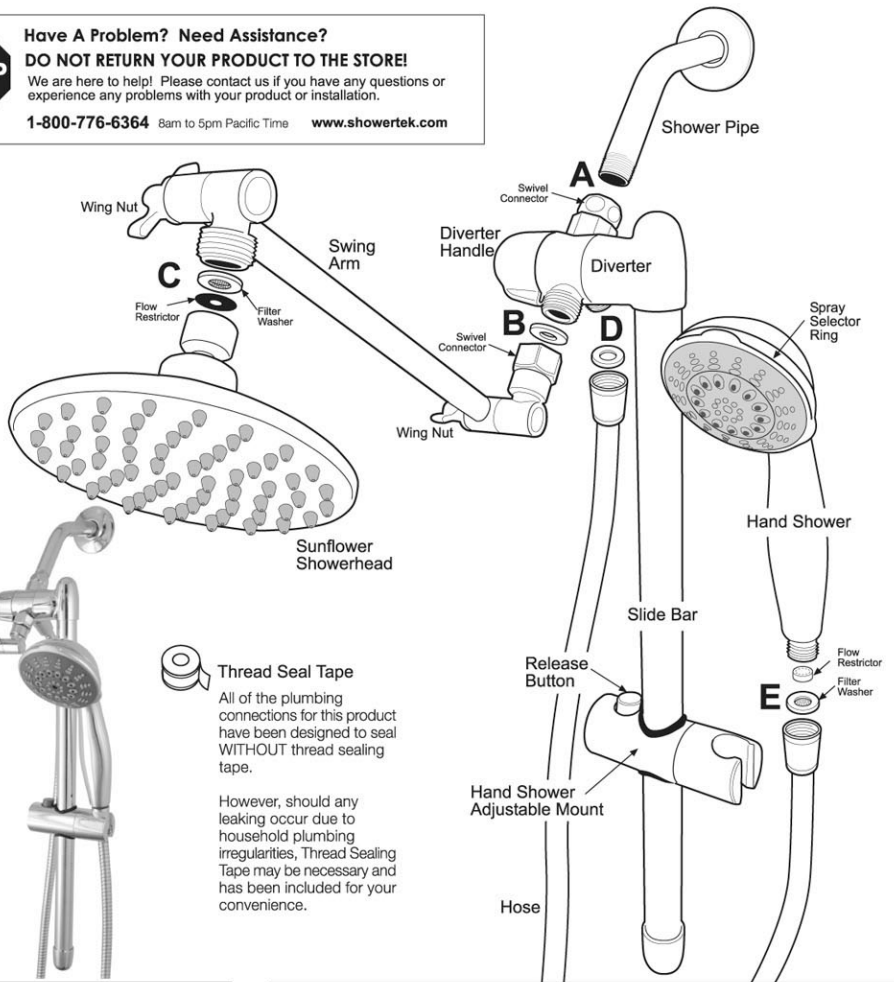
PRODUCT & CONNECTION OVERVIEW



Have A Problem? Need Assistance?
DO NOT RETURN YOUR PRODUCT TO THE STORE!

We are here to help! Please contact us if you have any questions or experience any problems with your product or installation.

1-800-776-6364 Barn to 5pm Pacific Time www.showertek.com



Thread Seal Tape

All of the plumbing connections for this product have been designed to seal **WITHOUT** thread sealing tape.

However, should any leaking occur due to household plumbing irregularities, Thread Sealing Tape may be necessary and has been included for your convenience.

TIP:

Leak Free Connections

Should you experience leaking in any of the plumbing connections after assembly:

1. Make sure the connection is screwed together tightly and that screw threads are not crossed or damaged.
2. Disassemble the connection and make sure a rubber washer is present. Make sure the washer is seated properly and not damaged.
3. Tighten the connection.
4. If the connection still leaks, Thread Sealing Tape will be required.

Note: Connections A and B have factory installed, permanent washers - they do not require a separate, flat washer.

Thank you for your purchase

With proper care and usage, this combination showerhead should provide many years of excellent and enjoyable service. Should you experience any problems please see the separate warranty card for warranty and service information. Please do not hesitate to contact us with any problems or questions.

Read and become familiar with ALL instructions in this guide before installing this product.



IMPORTANT SAFEGUARDS

- Use this product only as instructed.
- Do not hang any objects from the extended Sunflower Swing Arm.
- Slide Bar should be free from any soap, shampoo or cleaning agent so that Hand Shower Adjustable Mount maintains proper grip on bar.
- If the Swing Arm Wing Nuts are not tightened sufficiently, arm could droop and injury could result. Please inspect the Wing Nuts upon initial arm adjustment for proper tightness. Periodic inspection of the Wing Nuts is recommended.

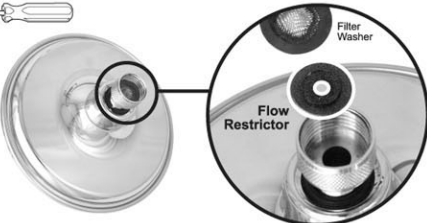
FLOW CONTROL

Government law mandates that maximum water flow be limited to 2.5 gallons per minute. This product contains 2 Flow Restrictor components that are responsible for this limitation.

The Flow Restrictors may **ONLY** be removed for product use in low water pressure areas.

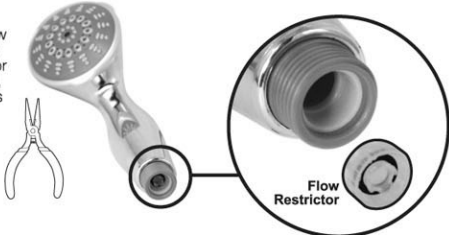
Sunflower

The Flow Restrictor is located in the female, threaded connector on the Sunflower Showerhead. It is a black plastic disk hidden underneath the visible, black rubber Filter Washer.



Hand Shower

The Hand Shower Flow Restrictor is located in the threaded connector at the base. The small, white plastic cylinder is easily pulled out for removal.



PREPARATION

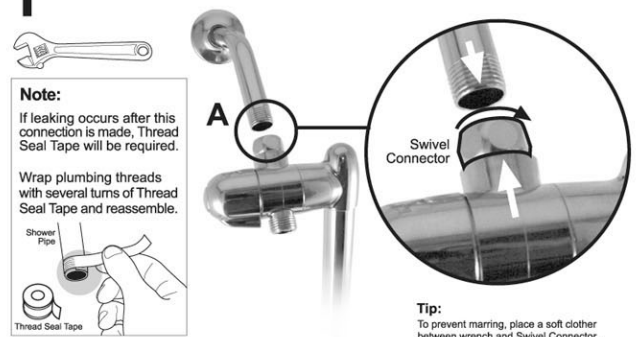
Remove Existing Showerhead

Your existing showerhead may be screwed tightly to your shower pipe - a wrench or pliers may be required to unscrew it. Take care not to damage the shower pipe - especially the screw threads - when removing the existing showerhead.

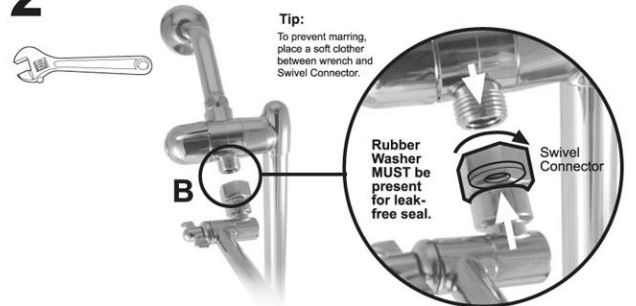
1. Unscrew existing showerhead.
2. Clean Shower Pipe threads
Remove any remaining thread seal tape, putty or scale build-up from the threads and open-end of the shower pipe. The threads should be bare and clean.

ASSEMBLY

1 Connection A - Attach Slide Bar To The Shower Pipe



2 Connection B - Attach Swing Arm To Slide Bar



3 Connection C - Attach Sunflower To Swing Arm

CAUTION!

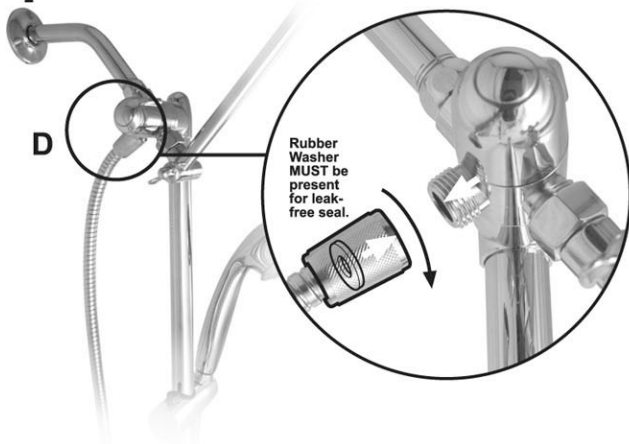
Do not hang anything from the Sunflower Showerhead or Swing Arm.

Make sure that the Swing Arm Adjustable Screws are tight.

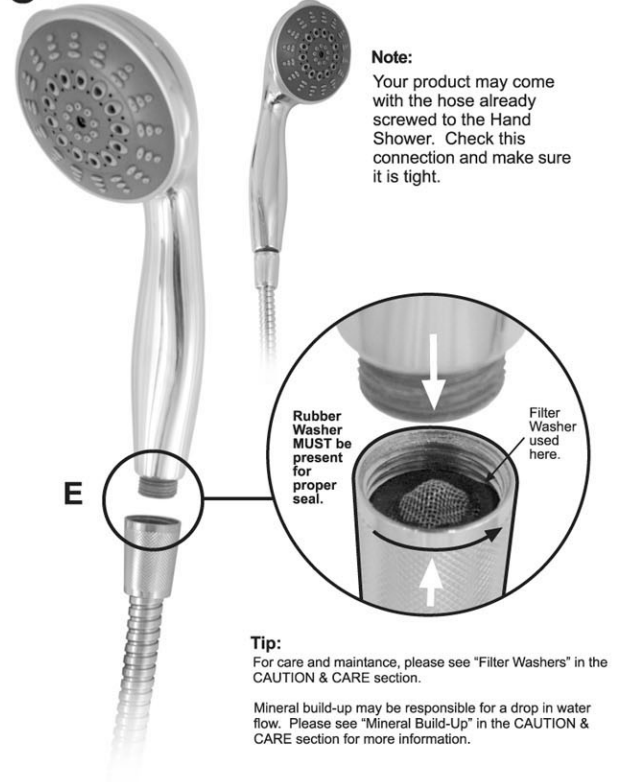


Tip: Mineral build-up may be responsible for a drop in water flow. Please see "Mineral Build-Up" and "Filter Washer" in the CAUTION & CARE section for more information.

4 Connection D - Attach Hose To Diverter



5 Connection E - Attach Hose To Hand Shower



Note: Your product may come with the hose already screwed to the Hand Shower. Check this connection and make sure it is tight.

Tip: For care and maintenance, please see "Filter Washers" in the CAUTION & CARE section.

Mineral build-up may be responsible for a drop in water flow. Please see "Mineral Build-Up" in the CAUTION & CARE section for more information.

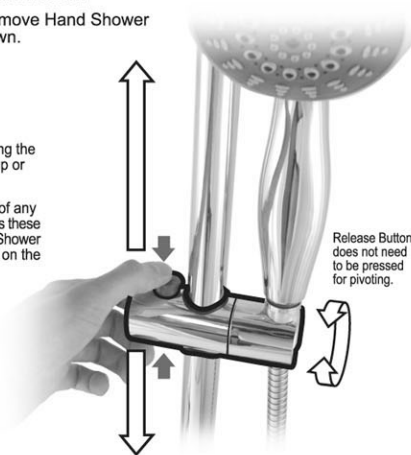
Hand Shower Adjustable Mount

Pinch Release Button and move Hand Shower Adjustable Mount up or down.

CAUTION!

Care should be taken when moving the Hand Shower Adjustable Mount up or down.

Be sure that the Slide Bar is free of any soap, shampoo or cleaning agent as these substances could cause the Hand Shower Adjustable Mount to lose its grip on the bar and slide down.

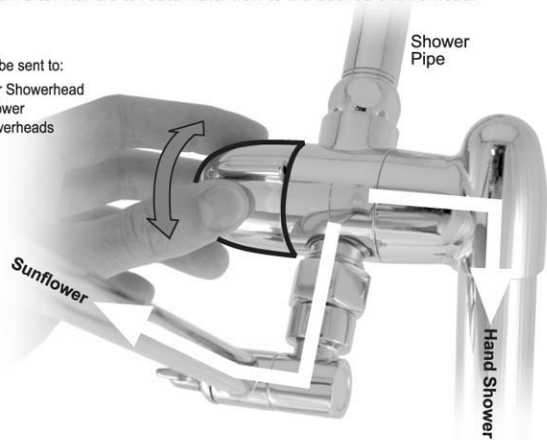


Diverter Valve

Turn the Diverter Handle to route water flow to the desired showerhead.

TIP:

- Water can be sent to:
 - Sunflower Showerhead
 - Hand Shower
 - both showerheads



Hand Shower Spray Selections

Turn spray face to select any 1 of 5 desired sprays.

TIP:

Spray face can be turned in either direction however there is a stop point.



CAUTION & CARE

CAUTION - Slide Bar

If soap, shampoo or any shower cleaning product is applied to the Slide Bar, the Hand Shower Adjustable Mount may lose its grip and slide to the bottom of the bar. To restore the grip of the Hand Shower Adjustable Mount on the bar, the bar should be washed totally clean with plain water.

CAUTION - Sunflower Showerhead & Swing Arm

Do not hang anything from the Swing Arm and Sunflower Showerhead. Be sure the Adjustment Screws on the Swing Arm are sufficiently tight after adjusting the position of the Swing Arm. Periodically check the Adjustment Screws to make sure they are tight and that the Swing Arm is secure.

Cleaning

Do not use harsh chemicals, abrasive cleaners or textured sponges / cloths to clean this product. This may damage the surface finish and void the warranty. Most popular shower cleaning products are suitable for cleaning the product surfaces of water marks, mineral deposits and soap scum. Always rinse all product surfaces clean of any cleaning product residue with clear water. Towel dry for a spot free shine.

Mineral Build-up

Due to hard water mineral build up, water flow through the Sunflower and Hand Shower spray nozzles may become restricted. The nozzles are easily cleaned by flexing the rubber spray jets which will break up the mineral deposits and restore full water flow through them. If mineral build-up is excessive, the Hand Shower or Sunflower spray nozzle can be soaked in household vinegar or a popular commercial shower cleaning product.

Filter Washers

Two filter washers are used in this product - one in the Sunflower Showerhead plumbing connection and one in the Handshower plumbing connection. These filter washers should be inspected and cleaned periodically, removing any mineral deposits or other matter. If water flow from either showerhead ever appears to be less than normal, the respective filter washer should be inspected and cleaned to help restore proper water flow.

Due to continuing improvements, your product may differ slightly from the product described herein.

Questions? Assistance?

Do you have questions about the installation or functions of this product?

1-800-776-6364
8am to 5pm Pacific Time

www.showertek.com