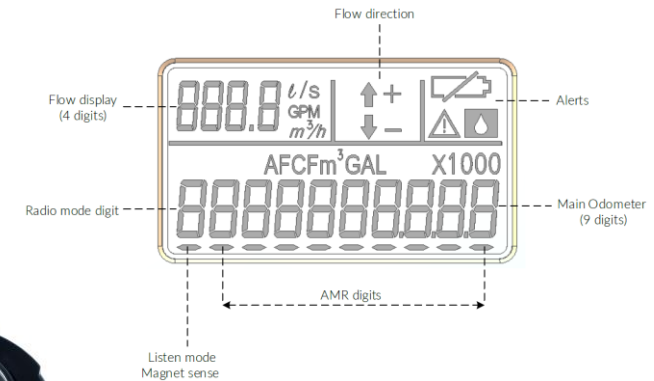


Arad Gladiator LoRaWAN water

- Australian NMI Certificate of Approval: NMI 14/3/31
- Positive Displacement piston-type Class 2 (accuracy $\pm 2\%$),
- Flow profile sensitivity class: U0/D0
- Operating Ambient Temperature: -10°C to $+75^{\circ}\text{C}$, Maximum Working Water P and T: 1600 kPa and $+50^{\circ}\text{C}$
- Materials: Composite body, Brass threaded end connections & Continuity Strip, Dual Check Valve
- Display: Rotatable LCD with Flow rate xxx.x m³/h, Direction, Alerts, Totaliser to 999,999.999 m³ (1 litre resolution)
- LoRaWAN AS923.1 (Tx or Tx/Rx modes), Class A
- LoRa payload: Alarms, Totaliser and last 12 one-hourly deltas (6-hourly uplinks standard)
- Alarms: Battery, Backflow, Tampering, Leak, Freeze Point, Burst
- Activation by Personalization, Over the Air Activation (OTAA) and Firmware upgrade Over the Air (FOTA) capability
- Battery: 3.6V TLC battery with 17 year lifetime (with 6-hourly uplinks)



Size	L dimension (with DCV)	Q ₁ (l/h)	Q ₂ (l/h)	Q ₃ (m ³ /h)	Q ₄ (m ³ /h)	Ratio Q ₃ /Q ₁	Pressure Loss Class
DN15	152, 154 mm	5 / 6.4 / 8 / 10	8 / 10.24 / 12.8 / 16	1.6	2.0	315 / 250 / 200 / 160	ΔP63, ΔP40, ΔP25
DN15	152, 154 mm	6.25 / 8 / 10 / 12.5 / 15.63	10 / 12.8 / 16 / 20 / 25	2.5	3.125	400 / 315 / 250 / 200 / 160	ΔP63, ΔP40, ΔP25
DN20	152, 154 mm	16	26	4.0	5.0	250	ΔP63