



**Battery Power Display:**

Press power button, the LED indicator on the device helps track charging status. It will indicate the actual battery remaining. There is 100% power available when 99 displayed.

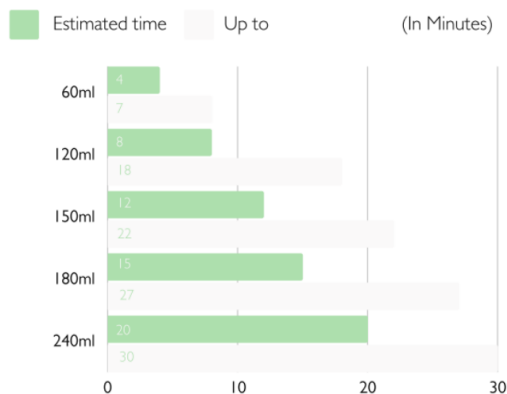
**Low Power Display under working state:**

"LO" displayed to warn less than 20% available power, please charge. When "LO" displayed, it blinks for 6 seconds and then powers off.

Note: Please charge the warmer with 3A power adapter.

**Heating Reference Table**

The speed at which the warmer heats the milk or food will depend on the size of the bottle or container and the starting temperature of the milk or food. Time in below table is laboratory data. Actual time is different based on different use environment:



**Travel Bottle Warmer**

**Formula Dispenser**

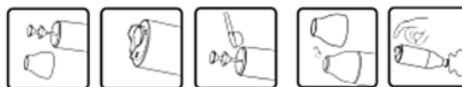


**Structure Description**

1. Dispenser Cap
2. Dispenser Nozzle
3. Dispenser Body
4. Powder Valve B
5. Output Controlling Holder
6. Powder Valve
7. Shaft
8. Shaft Seal Ring
9. Dispenser Base
10. Release Button

**How to use your dispenser**

1. Remove dispenser cap and nozzle.
2. Press the release button to self lock.
3. Add formula powder into the dispenser with a scoop.
4. Attach the nozzle to the body.
5. Press the release button to access powder.

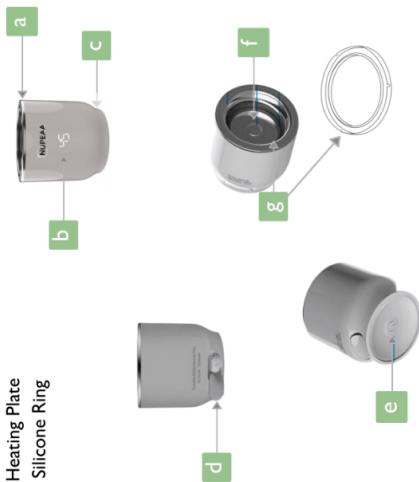


Note: Please shake the dispenser gently before press. Press and shake the dispenser to output powder

**Bottle Warmer Base**

**Structure Figure**

- a. Cap
- b. Digital Temperature Display
- c. Base
- d. Charging Cover
- e. On/Off Button
- f. Heating Plate
- g. Silicone Ring



**How to use Bottle Warmer Base**


Note: Please use 3A power supply with 3A charge cable (Original USB cable is 3A cable).

**Cleaning**

Portable Warmer

1. Unplug the USB cable.
2. Long press for 2 seconds until power off.
3. Clean and dry the stainless steel parts.

Note: Do not immerse it in water to clean. Be careful not to lose sealing ring during cleaning.

Formula Dispenser

1. Uninstall the dispenser cap, body, nozzle and output controlling parts.
2. Wash with soapy water or in the dishwasher on the top rack.

Adapters and O-rings: Wash with mild liquid soap and rinse with clear water. Allow to air-dry. Always replace rings to their proper location (flat side down). Keep Dust Cover on when not in use to keep heating plate clean.

**De-scale**

De-scale your warmer base after every use to ensure residual deposits are removed from the heating plate and the silicone seal. To de-scale, mix 0.5oz. (15ml) of white vinegar with 0.5oz. (15ml) of cold water and pour into the heating plate. Allow liquid to stand in the unit until any deposits (limescale) have dissolved. Discard liquid and rinse with clear water, repeat process to remove any residual deposits. NOTE: To avoid bacteria growth perform process and de-scale daily. Any other servicing should be performed by an authorized service representative.

Note: You can also use a citric acid based remover to descale. Do not use other types.