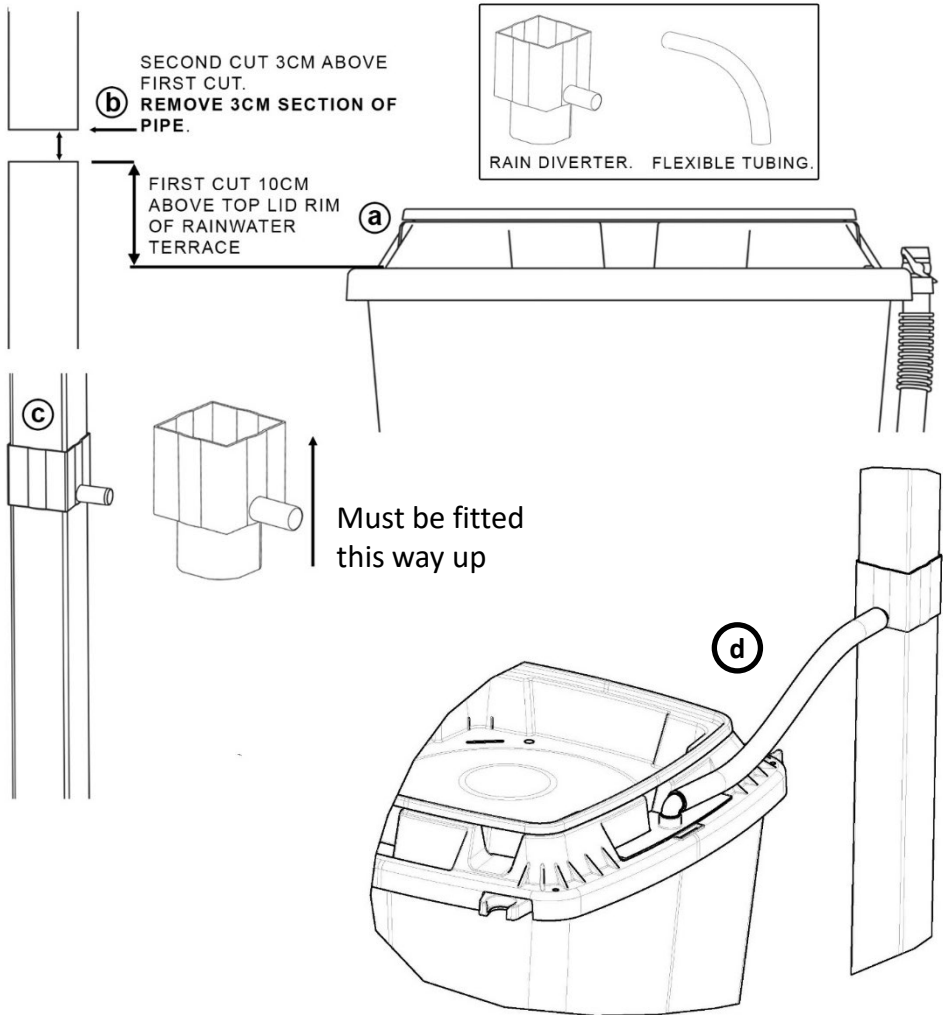


STANDARD RAINWATER DIVERTER INSTRUCTIONS

SUITS PLASTIC DOWN-PIPES 65mm SQUARE and 68mm ROUND



1. Make the first cut in the down-pipe minimum 10cm above the top lid rim of the Rainwater Terrace as shown (a)
2. Make a second cut in the down-pipe 3cm above the first cut (b)
3. Fit the Diverter as shown in figure (c)
4. Connect the small diameter flexible tube to the diverter and the inlet elbow (d)

rainwater
terrace

A Design 4 Plastics Ltd Product
402, Birch Park, Thorp Arch Estate,
Wetherby, West Yorkshire, LS23 7FG, UK
Tel: 01937 845176
www.rainwater-terrace.com
Email: rainwater-terrace@design4plastics.com