

How your Rainwater Terrace® works

When it rains the Rainwater Diverter (1) collects water from the downpipe and starts to fill the Top Planter Trays (2), watering plants attached to them. When full it overflows into the containers (3). The level of water is visible in the Drain-tube (4)

When they are full the water will overflow down the central tube (5), into the top of the plinth and back to the drain through the Outlet Tube(9).

Every time it rains sufficiently water flows through the whole system so minimising stagnant water.

Water can be drained from the containers through the Drain-tube. This has a built-in tap that allows very rapid filling of watering cans or buckets. It can be fitted either side.

The top planters (7) and side planters (8) are provided with special Capillary mats that draw up water from the planter trays (2) and feed your plants from the bottom

The only tools you will need are for fixing the wall brackets to your wall and fitting the Diverter kit and drain outlet tube. See instructions later.

**There is also a YouTube video you can watch :-
<https://www.youtube.com/watch?v=JVpGD2SIjaY>**

Location And Preparation Of Site



Your Rainwater Terrace® should be positioned close to a downpipe from your roof gutter so that excess water can be fed back into the drain easily. It can be positioned either side of the downpipe. Your Rainwater Diverter should be fitted last so that the correct height of installation is achieved.

When full your Rainwater Terrace® is very heavy so it is very important that it stands on a firm, flat, level surface that can withstand at least 150 kg. Check your intended site with a spirit level in both directions. (Note that most paving has a slight slope to encourage surface water to run away from your house.)

The plinths should contact the ground all round their base so cobbles and uneven paving are not suitable. Never install directly onto soil or any surface that will sink under pressure.

If in doubt we recommend installing a concrete base or two 60x60cm paving slabs so that they can be set at exactly the same level.

Any cement used to fix and level them should be allowed to set completely before installing your Rainwater Terrace®.

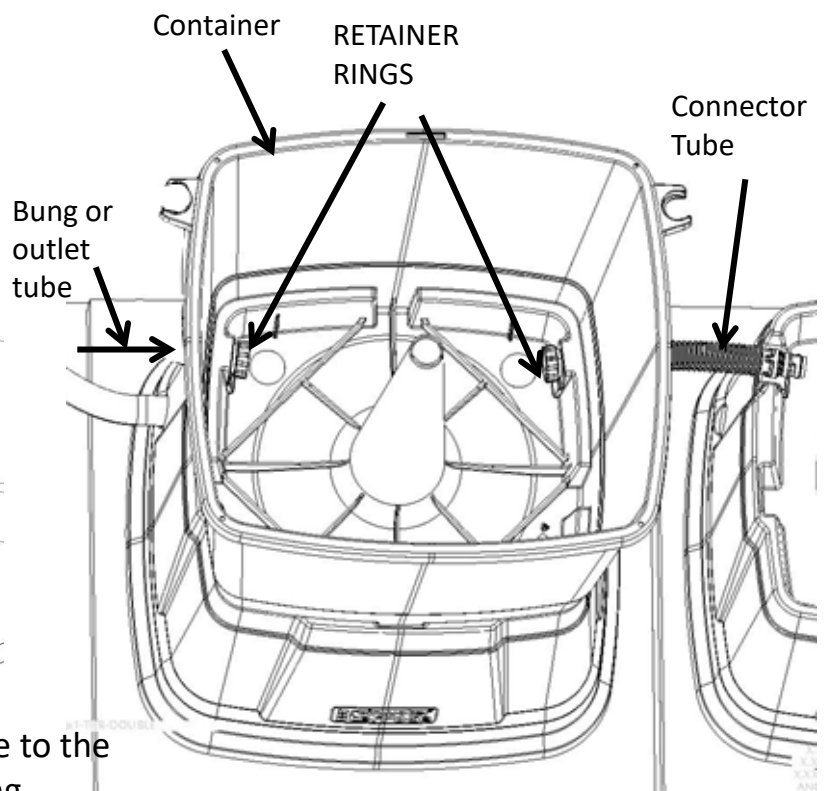
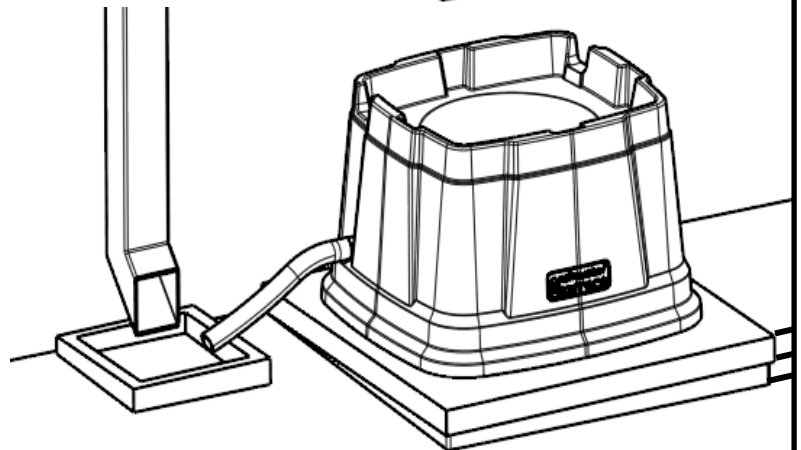
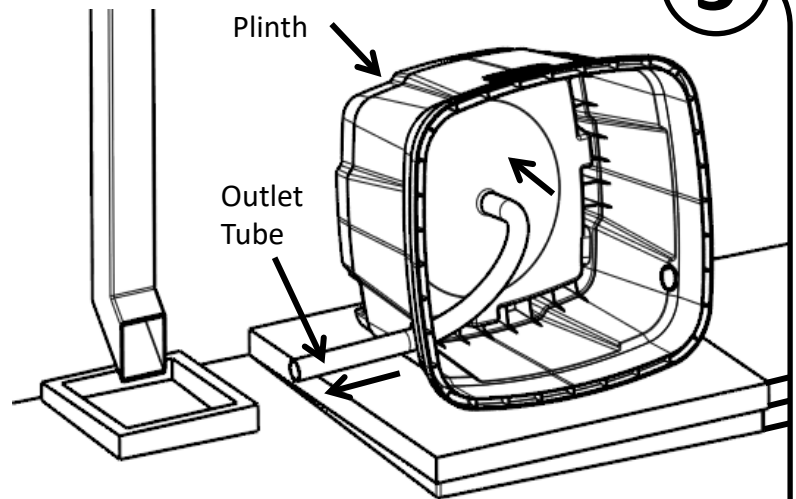
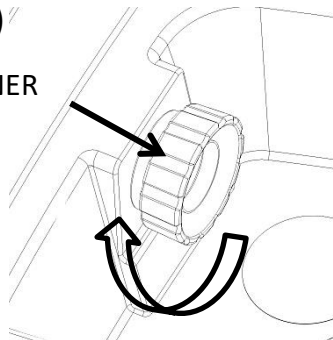
Assembly

1. Lay the first Plinth on its back as shown, assemble the Outlet Tube to the spigot on the underside of the Plinth as far as it will go and feed the other end through the hole nearest to your Drainpipe. (You can warm the end of the pipe in hot water to make it easier)

2. Position the Plinth on the flat base about 2cm from the wall. The outlet tube can be cut to length later when you are ready to connect to the Drain.

3. Place the first container on the Plinth (it will only fit one way) and assemble either the bung or the outlet tube in the hole nearest your downpipe. Turning the Retainer ring in a clockwise direction will pull the sealing ring into place. (Make sure you stop the bung or outlet tube rotating from the outside.)

RETAINER RINGS

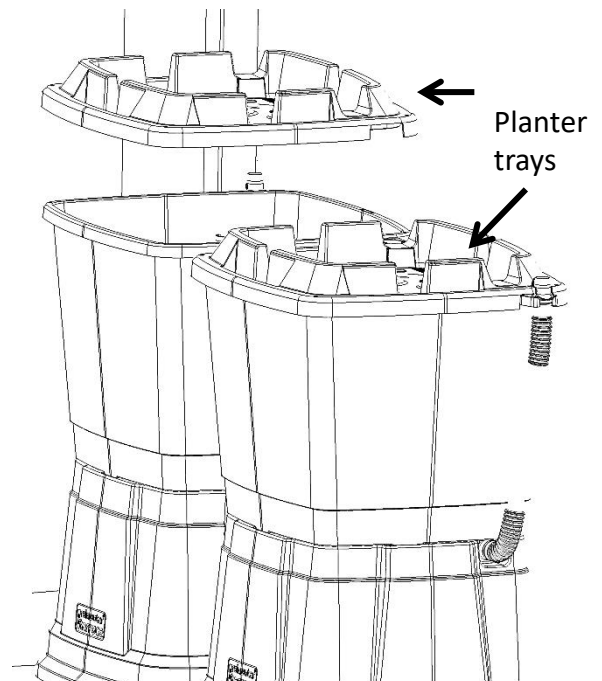
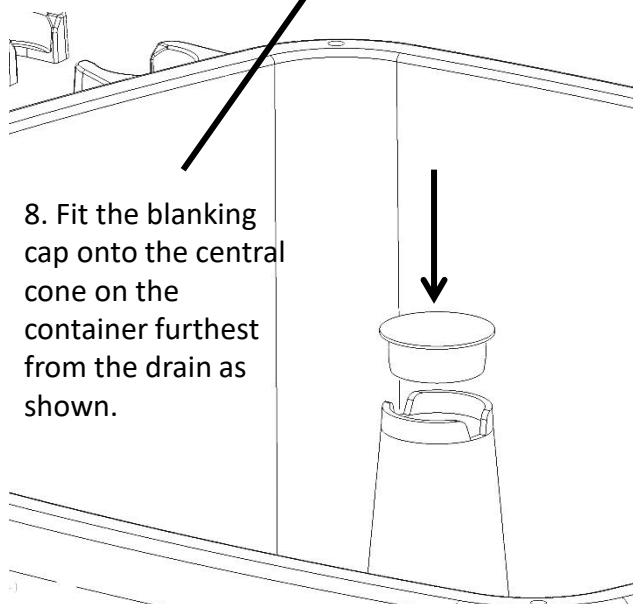
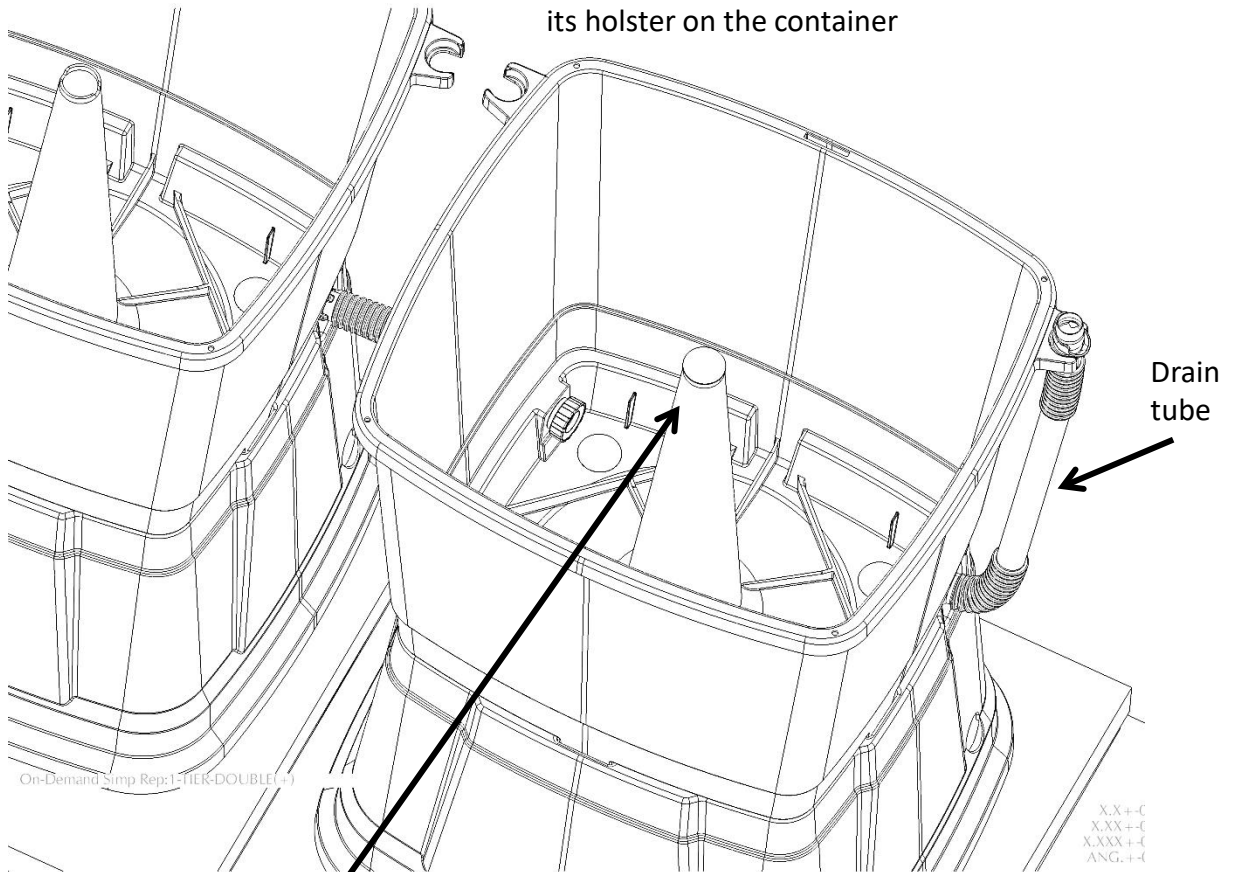


4. Assemble the connector tube to the other side of the container using another retainer ring in the same way.

5. Position the second plinth next to the first.

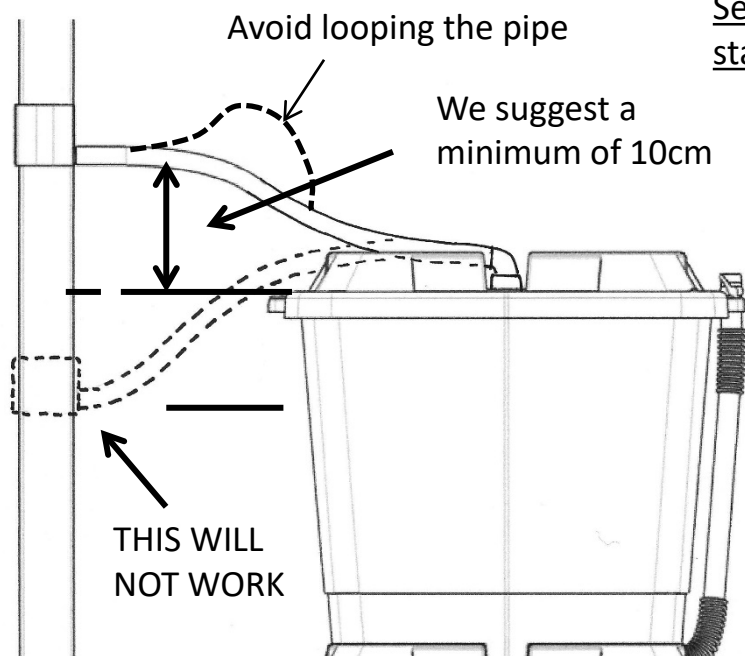
6. Fit the second container on top and connect the other end of the connector tube to it using another retainer ring.

7. Fit the Drain-tube or Bung using another retainer ring as before and hook the other end into its holster on the container



Connection To A Rainwater Diverter

For your Rainwater Terrace® to work the outlet from your rainwater diverter must be higher than the top rim of your top container otherwise water cannot overflow down the central tube (5) that feeds the lower container.

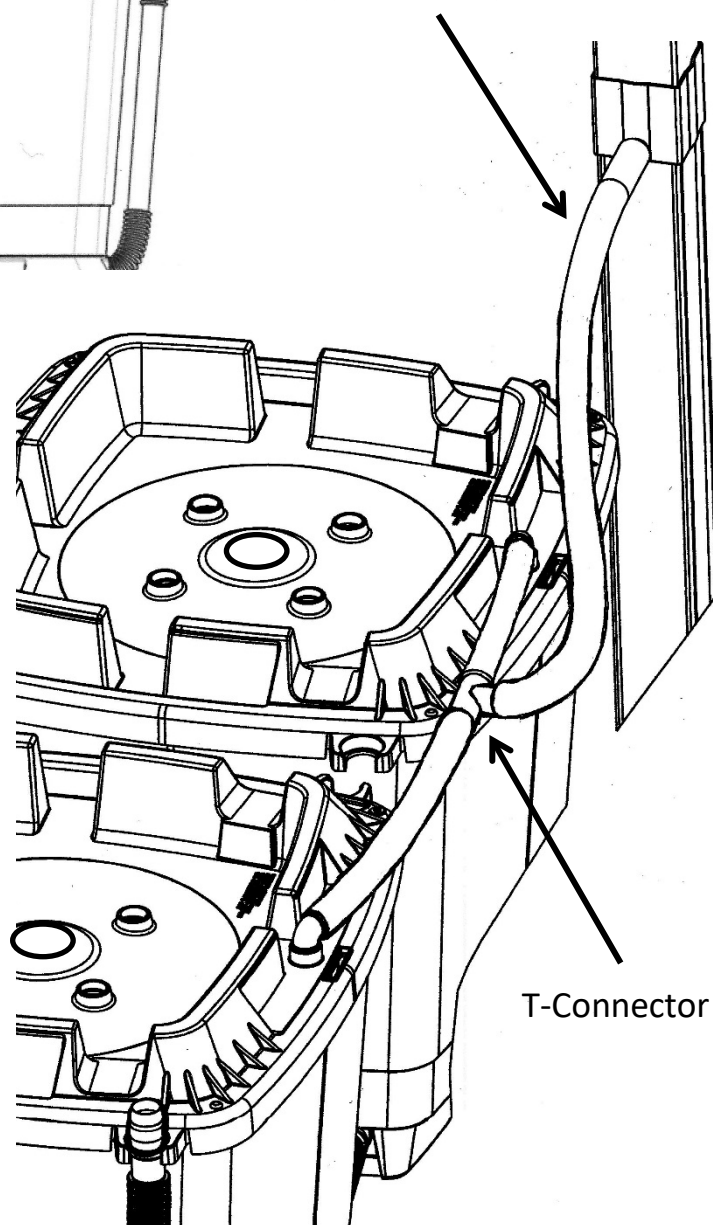


See page 8 for instructions for fitting standard Diverter to the Down-pipe

Use the smaller diameter pipe to connect to the rainwater inlet panels that are fitted into the top planter trays.

There are many different Diverter kits you can use, which will depend on your particular drainage requirements.

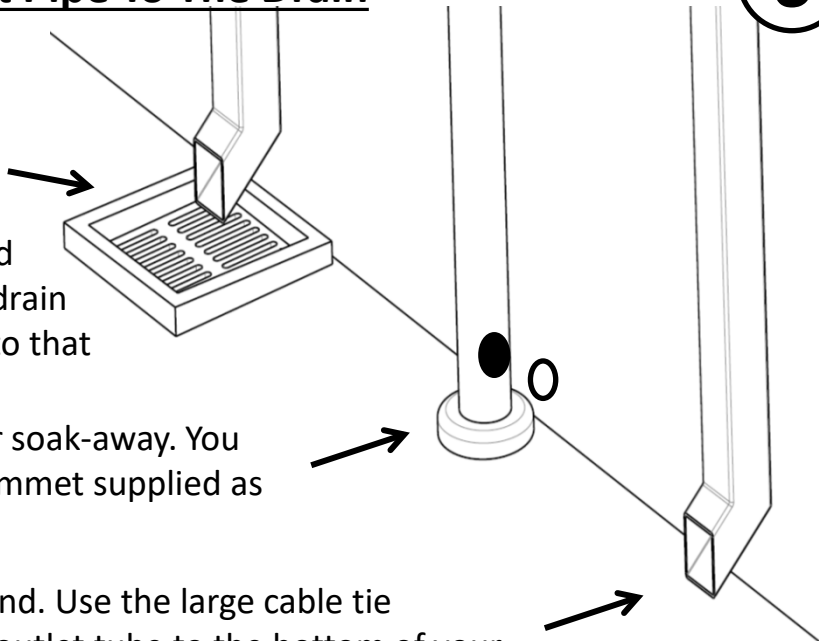
1. The Diverter we supply is suitable for standard 65mm square or 68mm round plastic down-pipes and will divert a large proportion of the rain falling through your Downpipe into your Rainwater Terrace® including any debris from your gutter. This will collect mainly in the top Planter Tray which is easy to clean out.
2. If you have problems with bunged up soak-aways there are Diversers such as the "Gutter Mate" that collect the debris in a filter that must be emptied regularly. This is also useful if you have larger Down-pipes. Follow the installation instructions that come with the Diverter kit with regard to cutting into your Downpipe but always bear in mind the instructions above.



Connecting The Outlet Pipe To The Drain

There are 3 basic types of rainwater drain-away

1. Into a grate linked to a drain or soak-away. Either fit the rubber grommet supplied as shown below or fit a plastic drain cover and fit the outlet tube into that



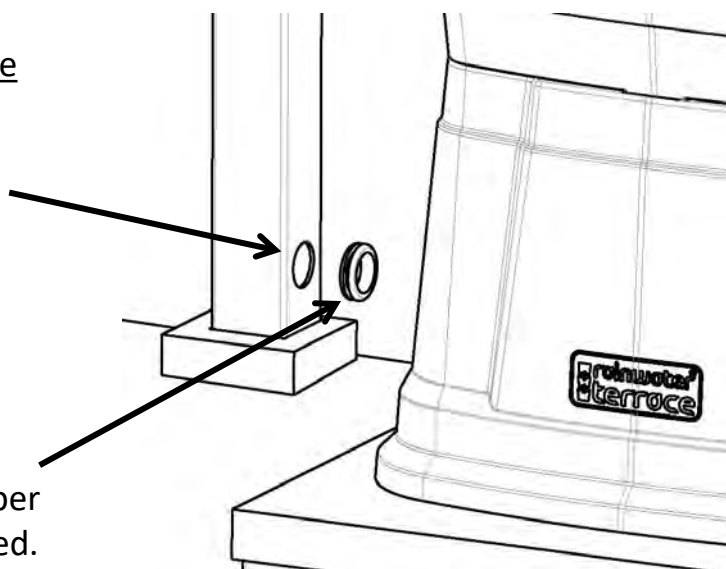
2. Directly into a drain or soak-away. You must use the rubber grommet supplied as shown below.

3. Directly onto your land. Use the large cable tie supplied to attach the outlet tube to the bottom of your down-pipe

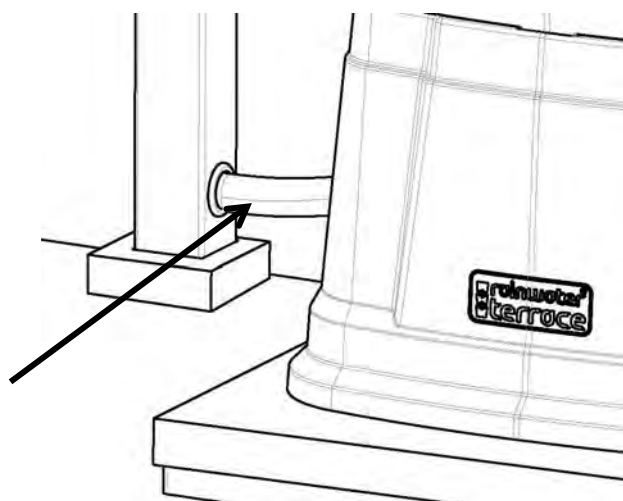
To fit directly into your down-pipe

Drill a hole 35mm diameter with a hole saw (not supplied). Position as low as possible on your down-pipe.

Then fit the rubber grommet supplied.



Finally insert the free end of your overflow tube. You can chop this to length so that about 3cm of pipe is inside the down-pipe.



The Planters

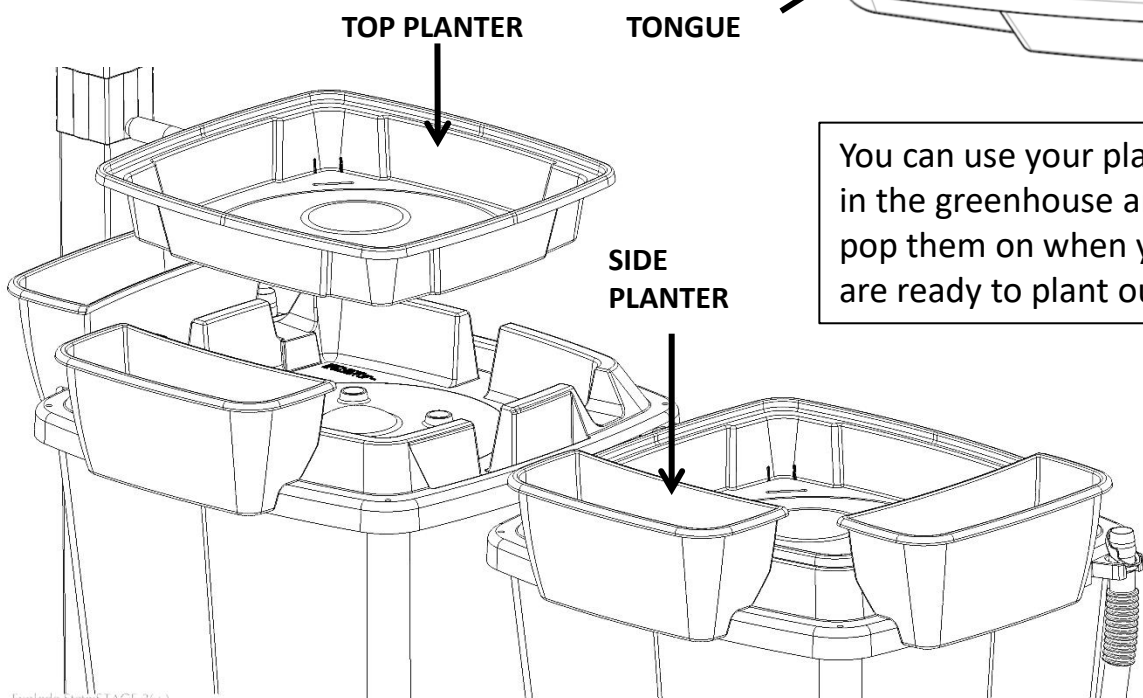
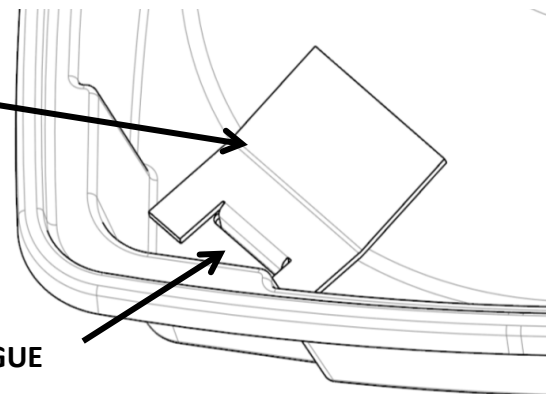
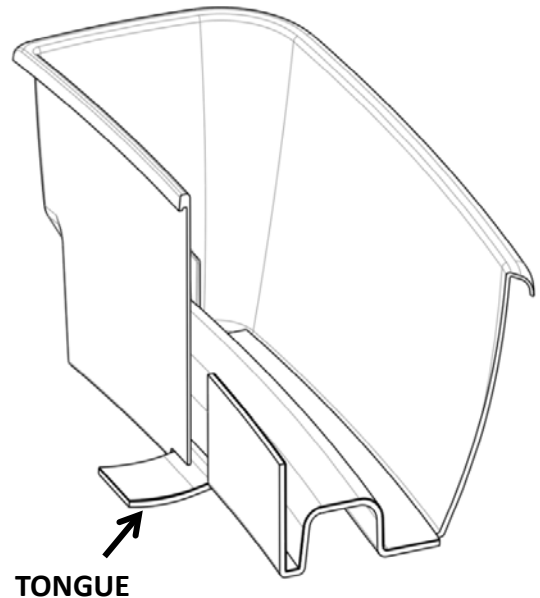
Now for the creative bit! Your Rainwater Terrace® is supplied with side planters and a top planter and pre-cut capillary mats for each that draw up water from the planter trays.

The Side Planters use the large mats. Fold back the flaps either side of the central tongue and feed it through the slot in the bottom of your planter then flatten out the mat as shown. Add some gravel to hold it in place and then fill up with compost that suits your plants. You will often benefit from the addition of horticultural grit or sand to improve drainage.

Plant up and fit your creation into the mounting slots in the planter trays on your Rainwater Terrace® making sure the tongue dips into the water.

If the planter tray is still dry you can top it up through any of the vacant mounting slots. The planter trays are replenished only when it rains so check the level of water regularly.

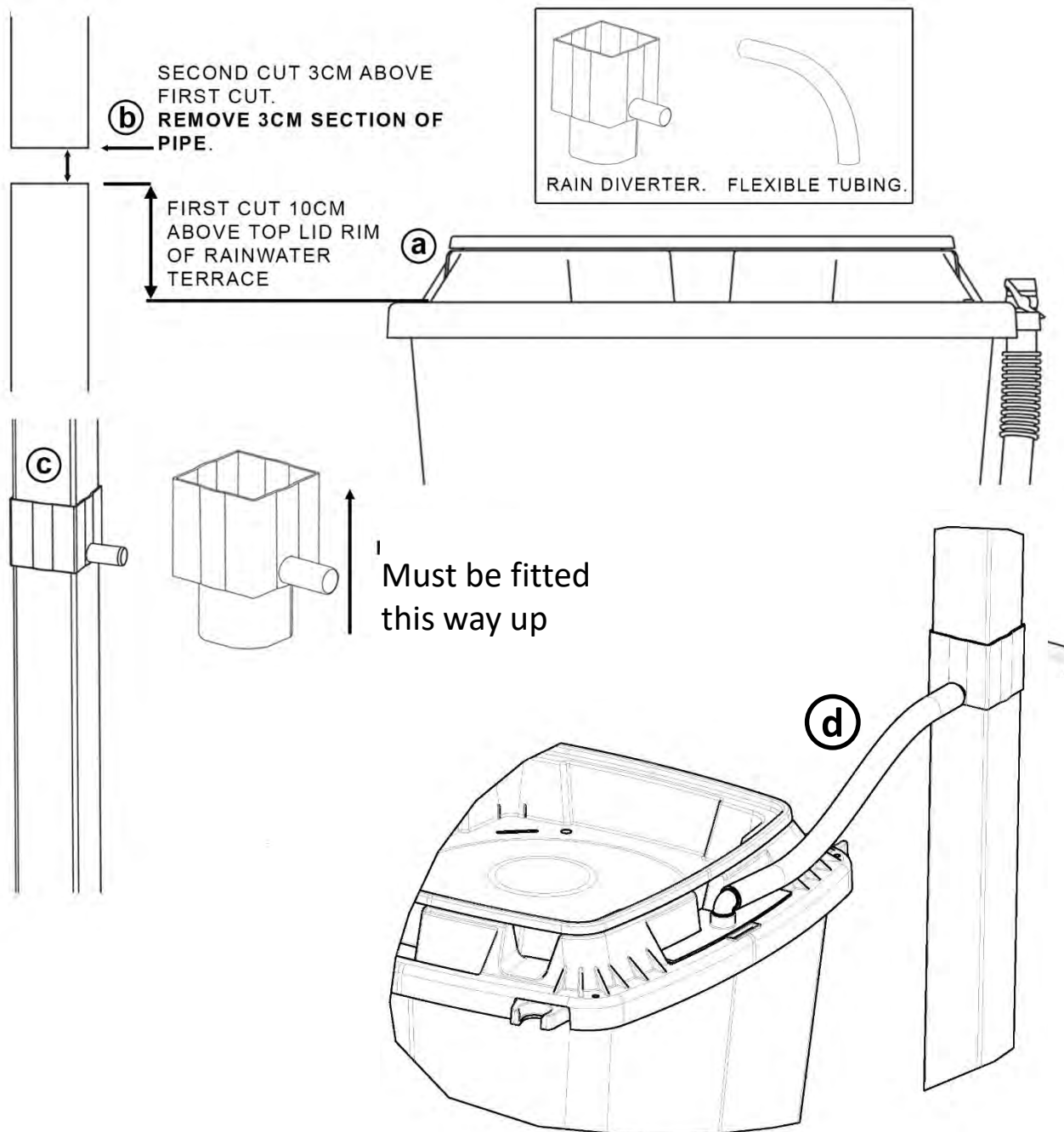
The Top Planter uses the 4 small mats that are fed through the slots from the top.



You can use your planters in the greenhouse and pop them on when you are ready to plant out.

STANDARD RAINWATER DIVERTER INSTRUCTIONS

SUITS PLASTIC DOWN-PIPES 65mm SQUARE and 68mm ROUND



1. Make the first cut in the down-pipe minimum 10cm above the top lid rim of the Rainwater Terrace as shown (a)
2. Make a second cut in the down-pipe 3cm above the first cut (b)
3. Fit the Diverter as shown in figure (c)
4. Connect the small diameter flexible tube to the diverter and the inlet elbow (d)

rainwater
terrace

A Design 4 Plastics Ltd Product
 402, Birch Park, Thorp Arch Estate,
 Wetherby, West Yorkshire, LS23 7FG, UK
 Tel: 01937 845176
www.rainwater-terrace.com
 Email: rainwater-terrace@design4plastics.com