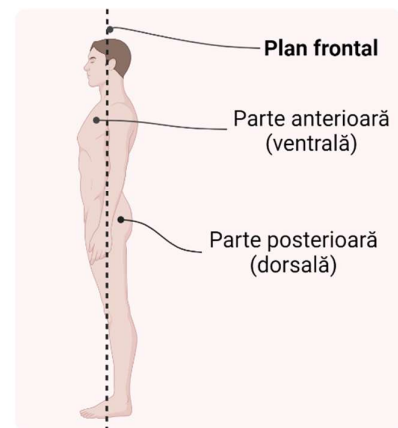
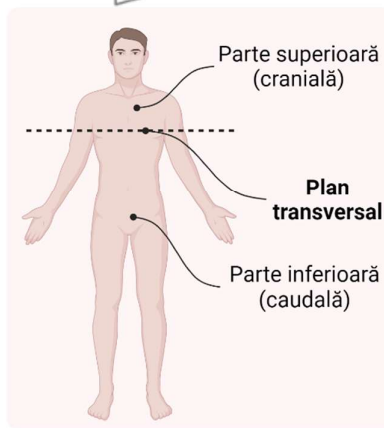
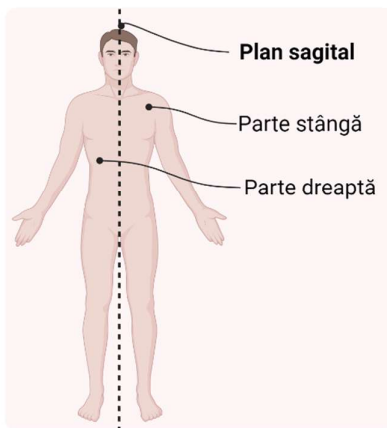
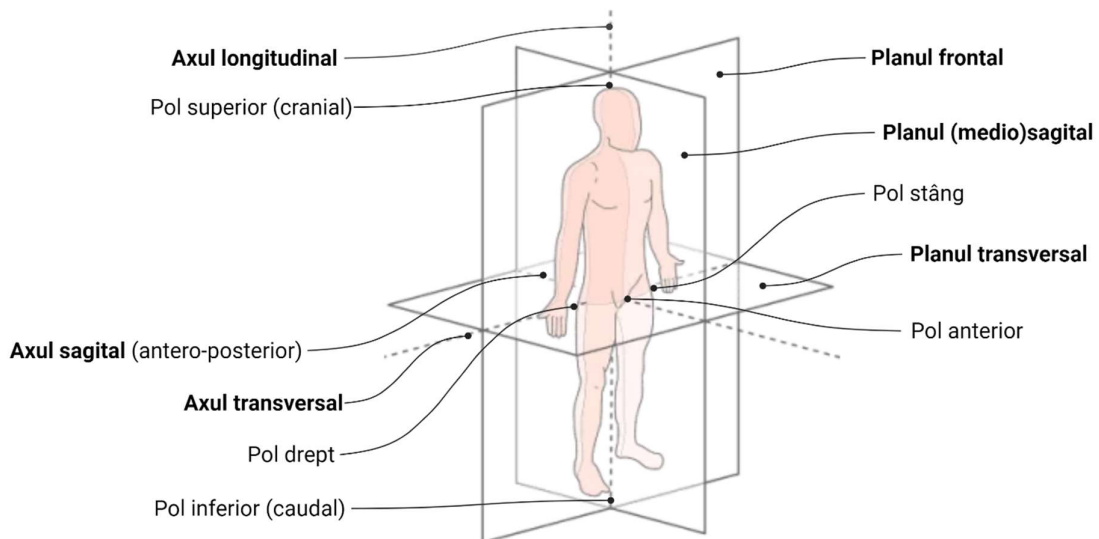
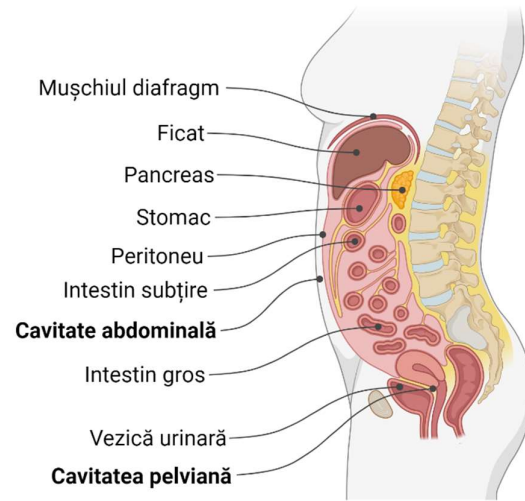
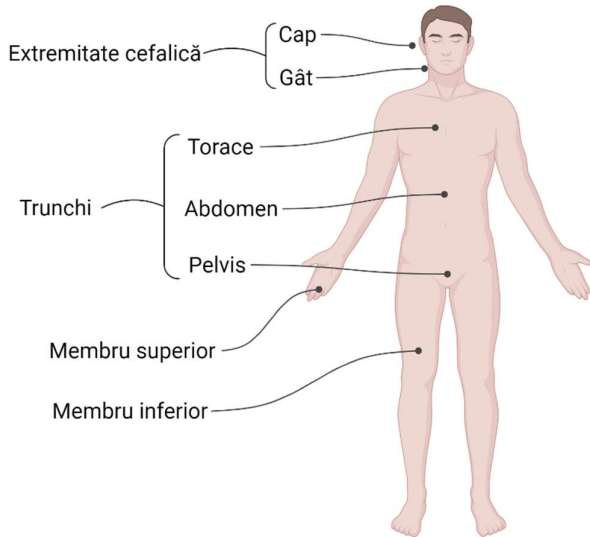
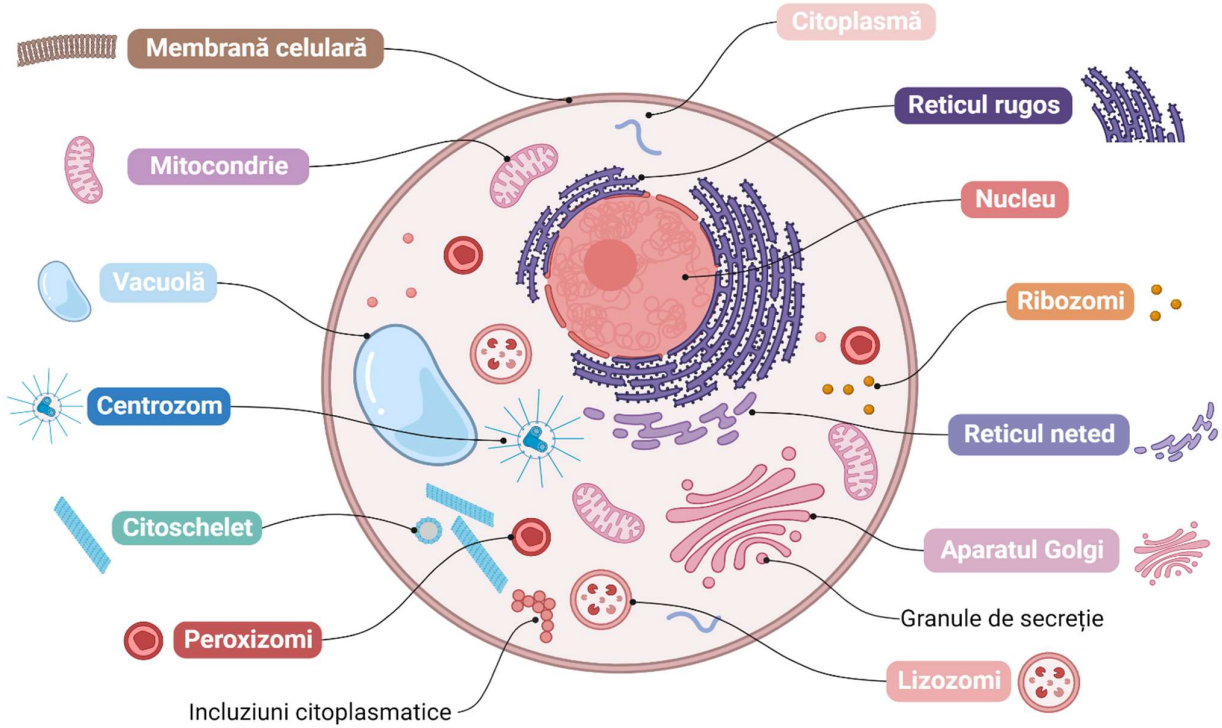


1. ALCĂTUIREA CORPULUI UMAN

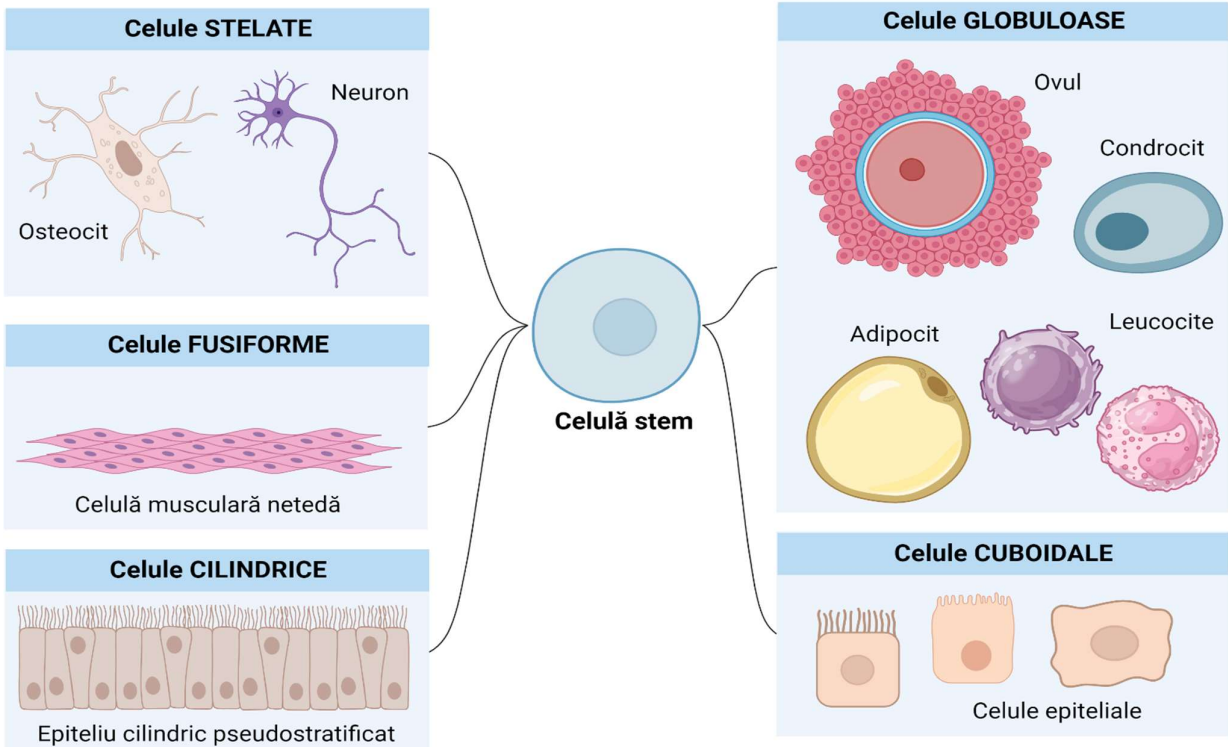


2. CELULA

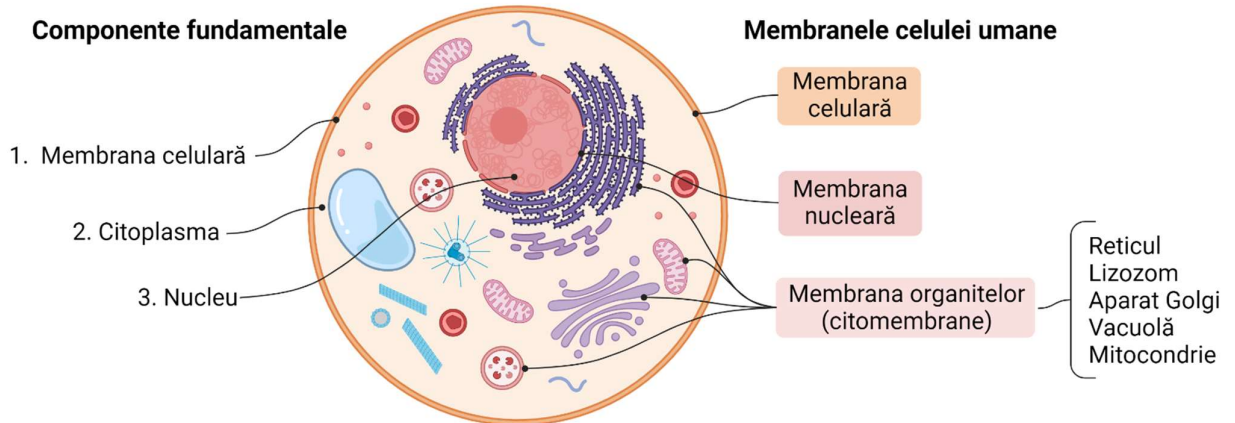
2.1. COMPONENTELE CELULEI UMANE



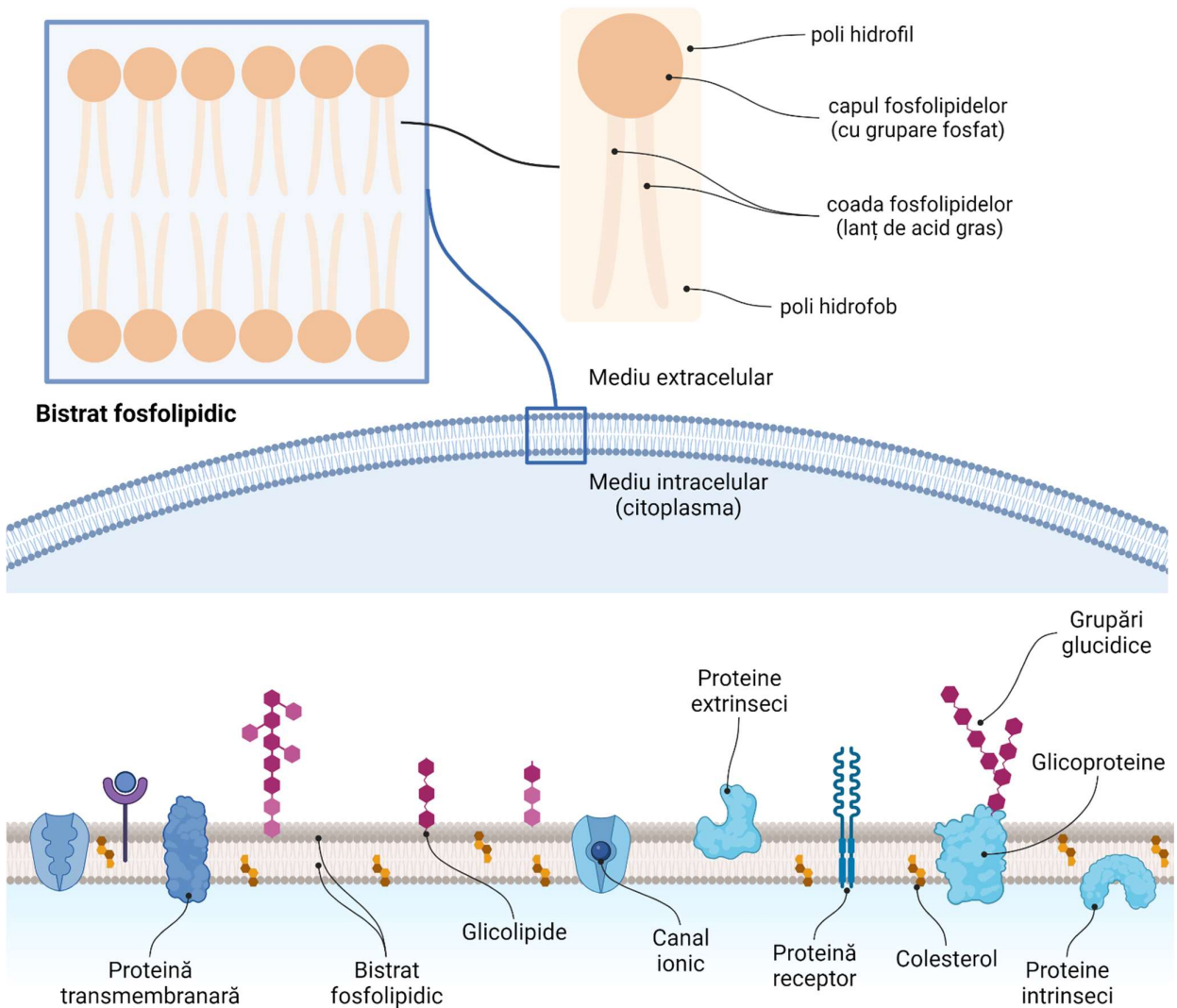
2.2. FORMA CELULELOR



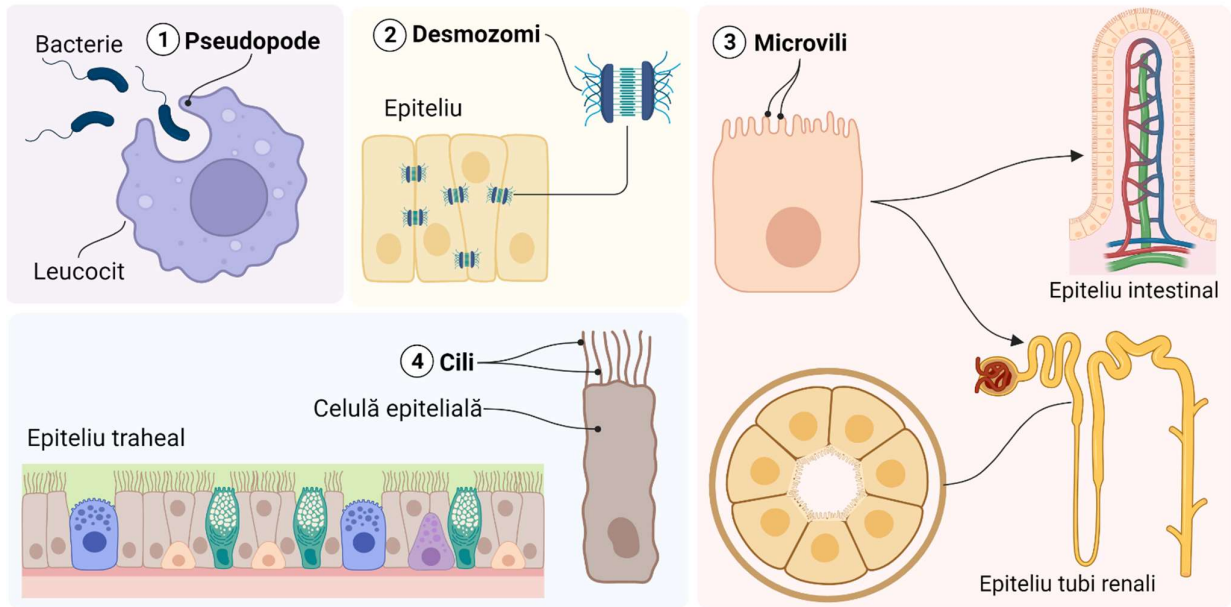
2.3 MEMBRANELE UNEI CELULE



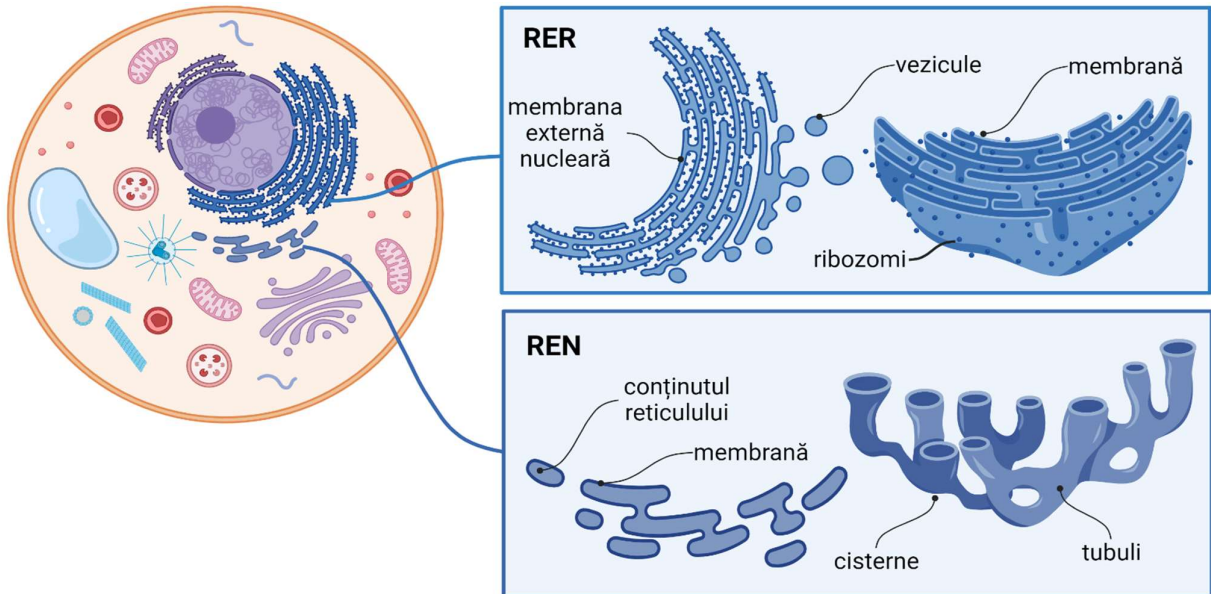
2.4 ULTRASTRUCTURA MEMBRANEI CELULARE



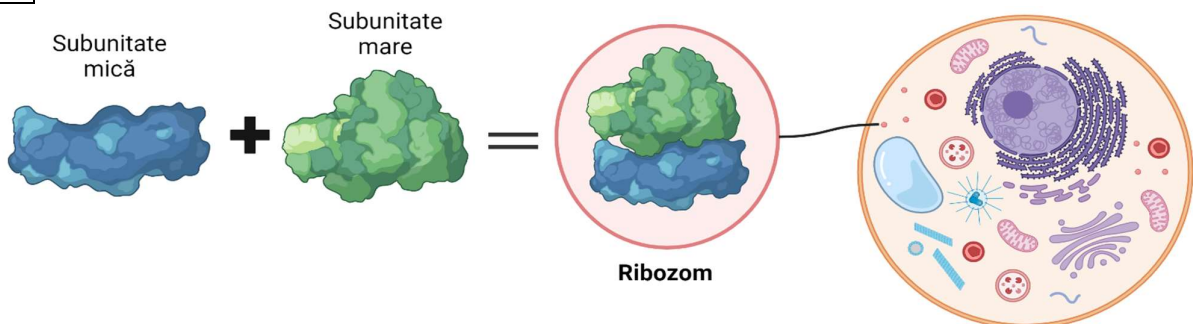
2.5. PRELUNGIRI CITOPASMATICE



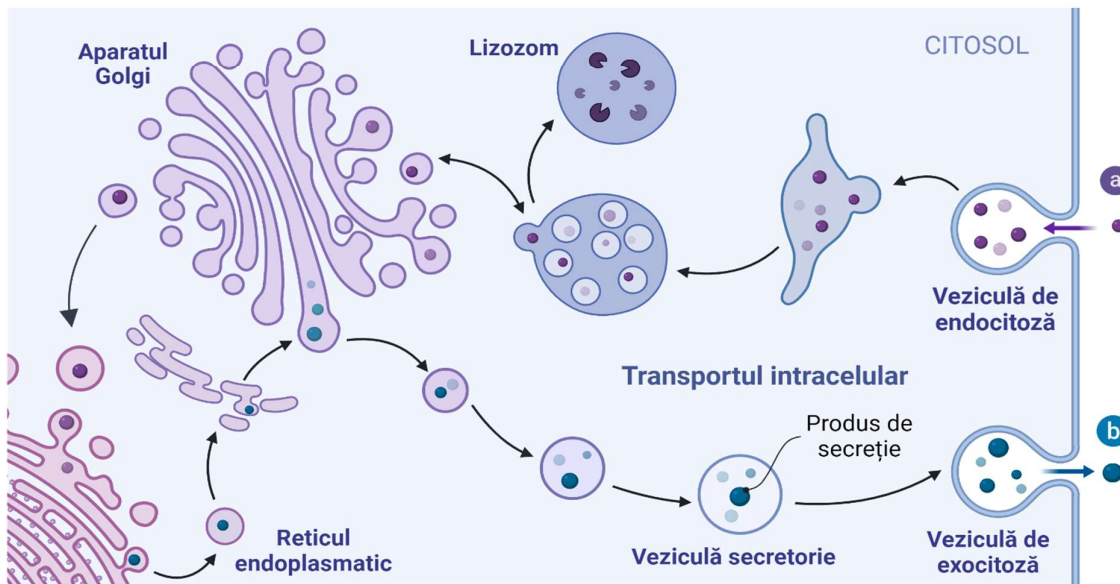
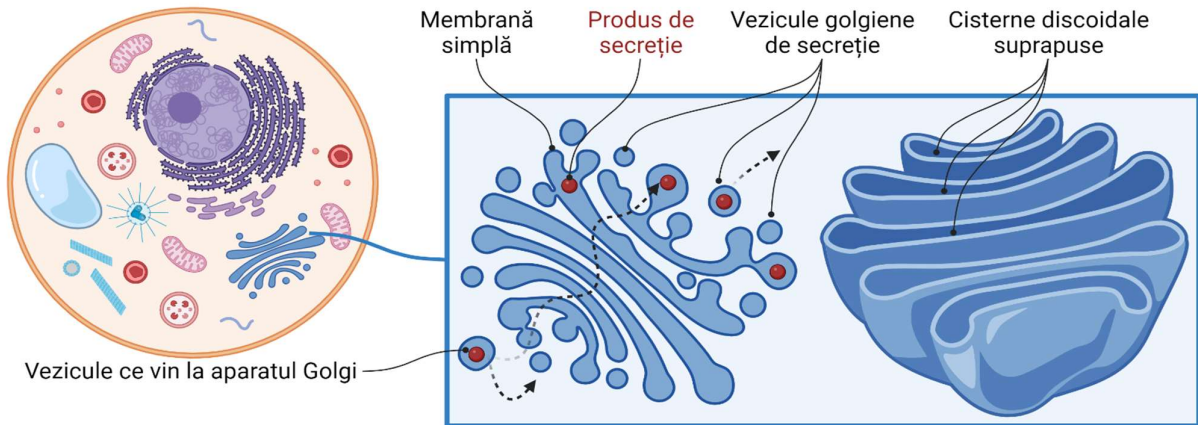
2.6. RETICULUL ENDOPLASMATIC



2.7. RIBOZOMUL



2.8. APARATUL GOLGI



2.9. MITOCONDRIA

