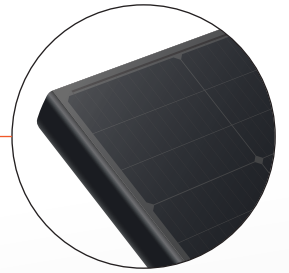
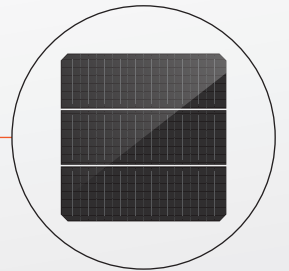


**Innovative Design of Micro Inverter**



**Full-Screen PV Module**



**1/3 Cut Solar Cells**

# SolarUnit

The World's  
First Integrated  
PV System



### Integrated System Design

- Modular design of solar system, convenient installation, lower BOS cost
- Each unit operates independently, unrestricted installation angle, more capacity on complex roofs



### High System Generation

- Integrated system solution, perfect match between module and inverter, higher system efficiency
- Module-level MPPT, greatly improve power generation of PV system



### Innovative Module Technology

- 1/3 cut low current module, less heat loss, better low light performance, system generation increased by around 3%
- Global patented Full-Screen module, decrease 6-15% power loss caused by dust accumulation



### Leading Inverter Technology

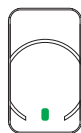
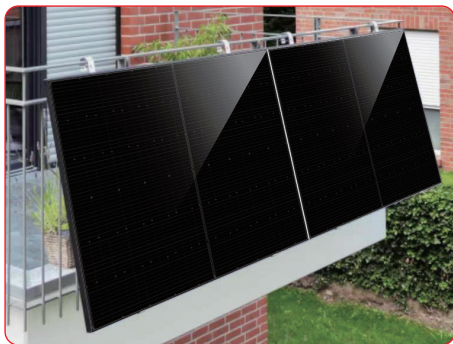
- Innovative contravariant scheme due to perfect match with low current module, peak efficiency above 97.10%
- The latest semiconductor technology, higher conversion efficiency, smaller inverter size, less consumption



### Improved Safety Assurance

- Lower risk of arcing due to lower system current, greatly reduce safety hazards
- Remote monitoring and rapid shutdown through Intelligent cloud platform

# System Configuration



## Configuration list

SYSTEM LAYOUT		DAH-SU600D
Recommended PV Module Power (STC) Range	6units	6units
Maximum Power (Pmax/W)	420W (PERC)	440W (N-TOPCon)
AC Bus Cable Current-carrying	28A/1pcs	28A/1pcs
AC Bus Connection Type	Fast-plug connector	Fast-plug connector
<b>UNIT DATA</b>		
Max. Output Power	600VA	600VA
Grid Voltage	220V/230V(180V-270V), L+N+PE	220V/230V(180V-270V), L+N+PE
Output Frequency Range	50/60Hz±5Hz	50/60Hz±5Hz
Max Output Current	3.0A	3.0A
Power Factor(Default/Adjustable)	0.9leading...0.9lagging	0.9leading...0.9lagging
Output Current Total Harmonic Distortion	< 3%	< 3%
Peak Efficiency	97.10%	97.10%
CEC Weighted Efficiency	97.00%	97.00%
MPPT Efficiency	> 99.95%	> 99.95%
Night Power Consumption	0W	0W
<b>FEATURES</b>		
Operating Ambient Temperature Range	-40°C ~ +65°C	-40°C ~ +65°C
Storage Temperature Range	-40°C ~ +85°C	-40°C ~ +85°C
Protection	IP65	IP65
Cooling	Natural convection-No fans	Natural convection-No fans
Microinverter Size (H x W x D)	412mm×97mm×42.5mm	412mm×97mm×42.5mm
Microinverter Weight	1.8kg	1.8kg
System Size (H x W x D)	1766×1132×32mm (X2)	1766×1132×32mm (X2)
System Weight	46.8kg	46.8kg
Noise	< 10db	< 10db
Overvoltage class	III	III
Communication	Wifi/PLC	Wifi/PLC
Operational Platform	DAH Smart Cloud Platform	DAH Smart Cloud Platform
System Integration	Integration of System and Module	Integration of System and Module
Certificates	ABNT NBR 16150,VDE-AR-N 4105: 2018	ABNT NBR 16150,VDE-AR-N 4105: 2018
	IEC/EN 62109-1/-2	IEC/EN 62109-1/-2
	IEC/EN 61000-6-1/-2/-3/-4	IEC/EN 61000-6-1/-2/-3/-4
	IEC/EN 61000-3-2/-3	IEC/EN 61000-3-2/-3
	IEC61215 IEC61730	IEC61215 IEC61730