




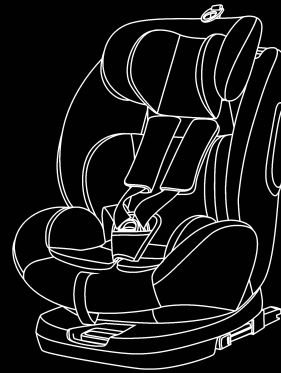
Baby Way

 · Babywaynz.com

 · [Babywaynz](https://www.facebook.com/Babywaynz)

Baby Way

 For your child's safety, please read these instructions carefully before use



YB102A

Weight : 0-36kg

Instructions



TESTED & APPROVED
ECE-R44/04
Economic Commission for Europe

Contents	1
Introduction	2
Important	3-4
Know your car seat	5-6
1. Suitability	7
2. Use in the vehicle	8
3. Preparation for Installation	9-10
3.1 Check the harness shoulder belt height(Group 0+/1 use).....	9
3.2 How to lock the buckle	9
3.3 How to open the buckle	10
3.4 Adjust the shoulder strap length	10
3.5 Adjust the height of headrest	10
4.Installation in the vehicle	11-13
4.1 Group 0+ installation, rearward facing (Child weight 0-13kg)	10
5.1 Group I installation, forward facing (Child weight 9-18kg)	13
6.1 Group II/III installation, forward facing (Child weight 15-36kg)	15
5.Washing instructions	14

Dear parents

Thank you very much for purchasing our product.

The nice function and credible design with accord to somatology would afford the most safety and comfort when your child was in this child restraint.

In order to exert the excellent function, please adjust the child restraint till that is suitable for your child's stature and avoirdupois before using our product and then equip it carefully and steadily.

Research shows that a high number of car safety seats are incorrectly installed. Therefore, please take the time to read through the instruction manual carefully. Our product offers maximum safety only when it is used in accordance with the instructions.

Continuous research by our development team, user tests and consumer reactions ensure that we are kept fully up to date in the field of child safety. Therefore, if you have any questions concerning the use of the our product, please do not hesitate to contact us.

You can see our contact information in the service card.

WARNING

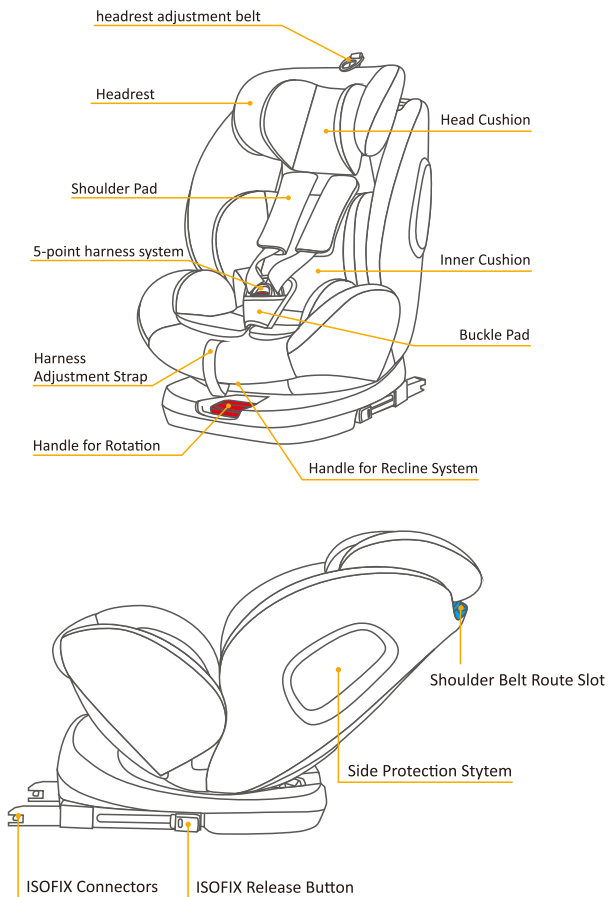
- Read this instruction manual carefully.
 - The correct fitting of the ISOFIX and 3-point belt is of vital importance for the safety of your child.
 - Never leave your child unattended in the car.
 - Do not use a child safety seat if the vehicle seat is equipped with a front airbags. This can be dangerous. This does not apply to so-called side airbags.
-
- Please follow below notice and warning during the use of this child seat.
 - We suggest to install and use this child seat in the second row of the vehicle seats, which is more safety.
 - Never take a child out of the child seat when the vehicle is moving.
 - It is extremely danger to use any load bearing contact points other than those described in the instructions and marked in the child restraint.
 - Make sure any straps holding the restraint to the vehicle should be tight, that any straps restraining the child should be adjusted to the child's body, and that straps not be twisted.
 - It is important to ensure that any lap strap is worn low down, so that the pelvis is firmly engaged, shall be stressed.
 - The rigid items and plastic parts of a child restraint shall be so located and installed that they are not liable, during everyday use of the vehicle, to become trapped by a movable seat or in a door of the vehicle.
 - Before start the driving, please check again the child seat installation in correct status.
 - Please read all instructions in this manual and in the vehicle owner's manual related to child safety seats carefully and understand them. Install and use the child safety seat as described in the instruction manual. Failure to do this could result in serious injury or death of your child. Keep the instruction manual with the child safety seat for future use.

- This child seat is only for use in the vehicle, and the vehicle seat position equipped with 3-points safety belts and ISOFIX anchorage points.
- Do not modify or attempt to modify the child safety seat in any way. It is danger to make any alterations or additions to the device without the approval of the Type Approval Authority, and it is also danger not following closely the installation instructions.
- The child restraint shall not be used without the cover; The seat cover should not be replaced with any other than the one recommended by the manufacturer.
- The child restraint system should be changed when it has been subject to violent stresses in an accident.
- Do not use this child seat in the seat position which has the front airbag.
- Please secure this child seat in the vehicle seat position when it is not in use.
- Be sure that any luggage or other objects liable to cause injuries in the event of a collision shall be properly secured.
- Be sure that children are not left in their child restraint system unattended.
- Please read the car manufacturer's handbook during use of child restraint system with ISOFIX.
- **IMPORTANT** – Do not use forward facing before the child's weight exceeds 9KG.

Questions

Contact your supplier or importer if you wish to make a warranty claim or have any other questions.

Your car seat can be fixed safely on almost seats of the cars. However, on some seats the belts are fixed so that proper installation is not possible, in that case, try another seat.



1. Certification



... as a child safety seat installed in a vehicle

Child Safety Seat	Tested and certified according to ECE* R 44/04	
	Group	Body Weight
YB104A	0+ / I / II / III	0- 36kg

The child safety seat has been designed, tested and certified according to the requirements of the European Standard for Child Safety Equipment (ECE R 44/04).

The seal of approval E (in a circle) and the approval number are located on the approval label (sticker on the child safety seat).

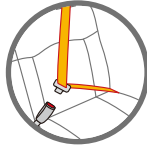
This approval will be invalidated if you make any modifications to the child safety seat. Only the manufacturer is permitted to make modifications to the child safety seat.

2. Use in the vehicle

WARNING

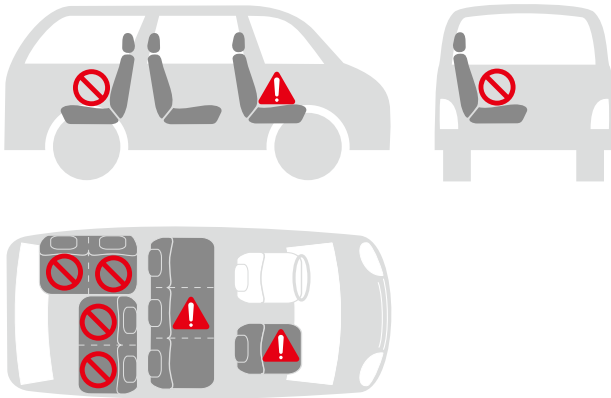


DO NOT use with 2-point belt.
Please install with the 3-point belt.



Please observe the regulations applicable to your particular country.
The safety belt must be approved to ECE R 16 or a comparable standard.
Do not use with 2-point belt.
Can be used if the vehicle seat is equipped with a 3-point belt.

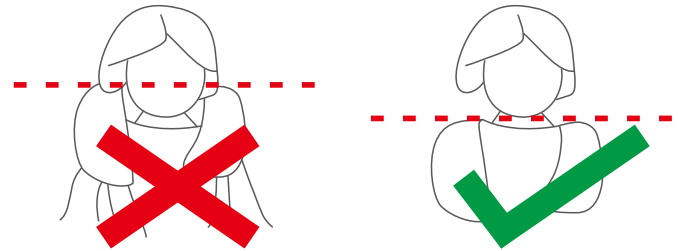
You can use your child car seat as follows:



3. Preparation for Installation

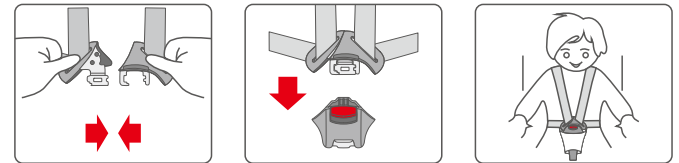
3.1 Check the harness shoulder belt height (Group 0+ / 1 use)

The harness straps' height can be adjusted, the top of harness straps should be a little higher than the children's shoulders, so that the child car seat can provide the effective protection when the accident occurs.



3.2 How to lock the buckle

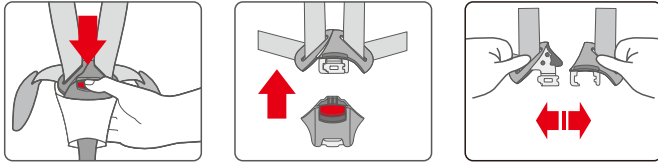
Put the left and right tongue of the buckle together, insert the closed tongues together into the buckle. When you hear "Ka", it means the buckle locked. Please be noticed the buckle only can be locked when two tongues connect together.



Preparation for Installation

3.3 How to open the buckle

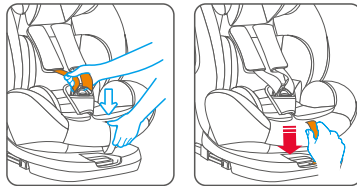
Press the red button on the buckle, the buckle will open.



3.4 Adjust the shoulder strap length

Tight the shoulder strap

One hand hold the child seat, another hand pull the adjust strap.

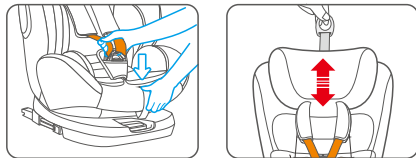


Loosen the shoulder strap

Press the quick adjuster lever by one hand, another hand pull the shoulder straps.

3.5 Adjust the height of headrest

Loosen Harness belts: Press the quick adjuster lever by one hand, then pull shoulder belt harness forward (as the arrow shows) by another hand to loose it. Hold the seat base by one hand, then hold the handle ring of the headrest, pull the headrest to the suitable height.

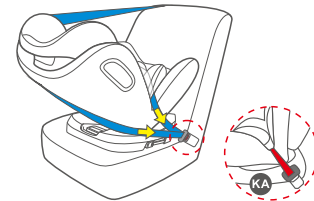
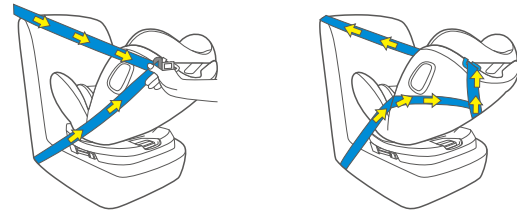


Installation in the vehicle

4.1 Group 0+1 installation, rearward facing. (child weight 0-18kg)

Adult three-point belt

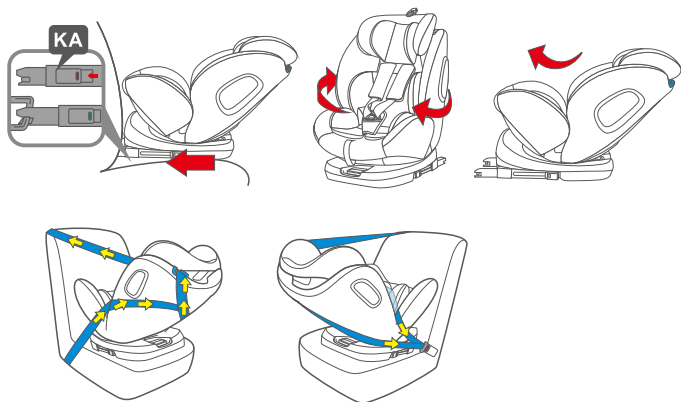
- Put the child car seat on the vehicle seat, rotate the seat body 180 degree to rearward facing, adjust the seat body to Max. Inclined.
- Continue push the child car seat, make it close to the vehicle seat back.
- Put out the car belt, let diagonal belt go through belt guide at the backrest and lab belt go through under the inner cushion, buckle it.
- Then tighten and flatten the belt, finish the installation.
- Open the harness system, put the child into the car seat, lock the harness buckle.



4.2 Group 0+1 installation, rearward facing. (child weight 0-18kg)

Adult three-point belt+ISOFIX

- Put the child car seat on the vehicle seat, rotate the seat body 180 degree to rearward facing, adjust the seat body to Max. Inclined.
- Aim 2 Fix connectors to the ISOFIX anchorages on vehicle seat, push to make it connect, till you hear “Ka”.
- Continue push the child car seat, make it close to the vehicle seat back. Check the Fix release button, make sure the indicator turns to Green.
- Put out the car belt, let diagonal belt go through belt guide at the backrest and lab belt go through under the inner cushion, buckle it.
- Then tighten and flatten the belt, finish the installation. Open the harness system, put the child into the car seat, lock the harness buckle.

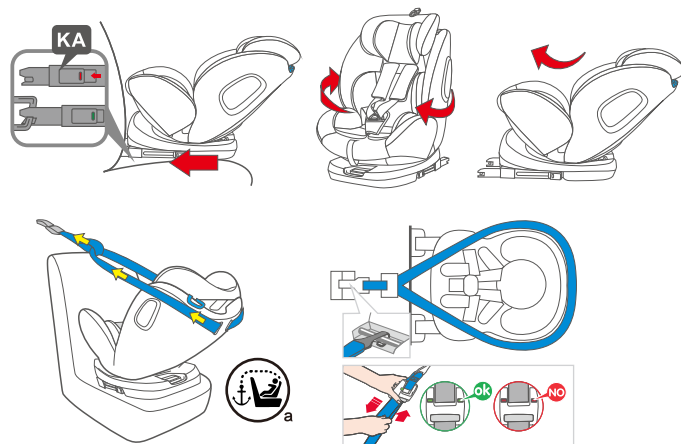


4.3 Group 0+1 installation, rearward facing. (child weight 0-18kg)

ISOFIX+Top tether

- Put the child car seat on the vehicle seat, rotate the seat body 180 degree to rearward facing, adjust the seat body to Max. Inclined.
- Aim 2 Fix connectors to the ISOFIX anchorages on vehicle seat, push to make it connect, till you hear “Ka”.
- Continue push the child car seat, make it close to the vehicle seat back. Check the Fix release button, make sure the indicator turns to Green.
- Hook the “Top tether” strap to the anchorage point as shown with the spring hook. To tighten the top tether strap more easily pull the top of the seat towards the vehicle seat.
- the vehicle seat.

IMPORTANT: the indicator changes to show green.

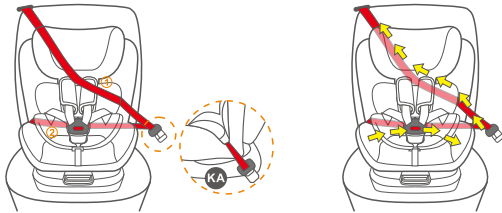
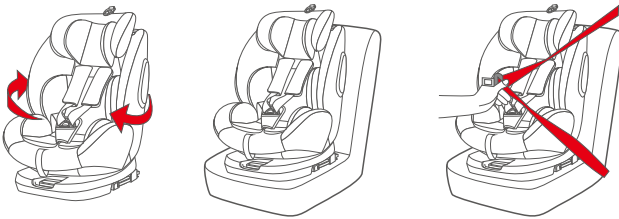


Installation in the vehicle

5.1 Group I installation, forward facing. (child weight 9-18kg)

Adult three-point belt

- Continue push the child car seat, make it close to the vehicle seat back. Check the FIX release button, make sure the indicator turns to Green.
- Pull out the car belt, let diagonal belt go under the headrest, and lab belt go through under the inner cushion, buckle it. Then tighten and flatten the belt, finish the installation. Put the child into the car seat, lock the harness buckle.

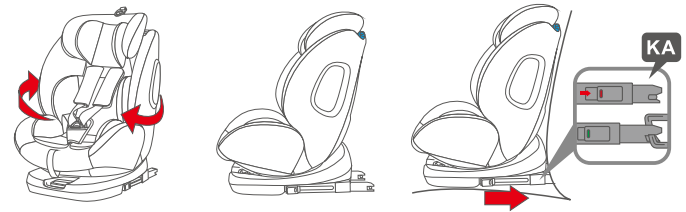


Installation in the vehicle

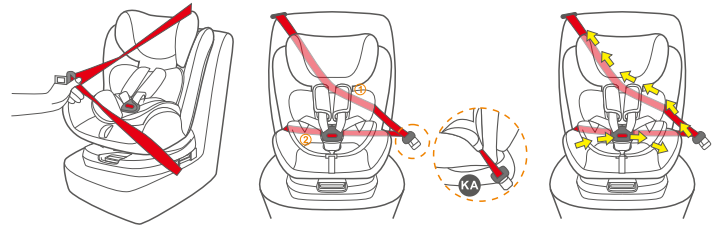
5.2 Group I installation, forward facing. (child weight 9-18kg)

Adult three-point belt+ISOFIX

- Put the child car seat on the vehicle seat in forward facing, adjust the seat body to Upright. Aim 2 FIX connectors to the ISOFIX anchorages on vehicle seat, push to make it connect, till you hear "Ka".



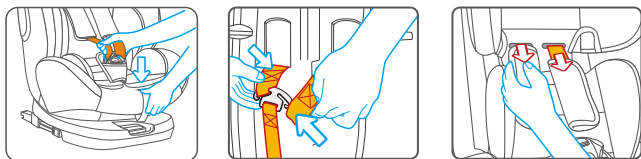
- Continue push the child car seat, make it close to the vehicle seat back. Check the FIX release button, make sure the indicator turns to Green.
- Pull out the car belt, let diagonal belt go under the headrest, and lab belt go through under the inner cushion, buckle it. Then tighten and flatten the belt, finish the installation. Put the child into the car seat, lock the harness buckle.



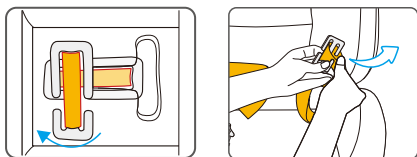
Installation in the vehicle

6.1 Group II/III installation, forward facing. (child weight 15-36kg)

- Release the harness system: Press the harness adjuster lever, then pull shoulder belt harness forward by another hand to loose it. Unfasten the metal harness yoke from the back of child seat, then unfasten the connect of shoulder straps.

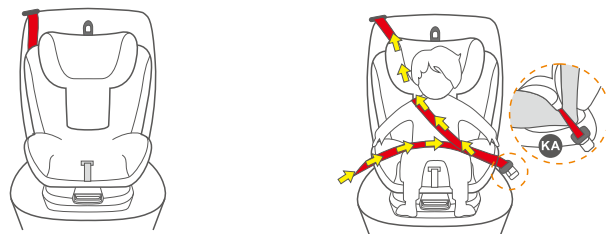


- Pull the belt and shoulder straps out of the shoulder strap slots. Roll over the base of child car seat, take off the “E” style buckle from the buckle strap. Take off the belt, and keep them well, you may need them in the future.



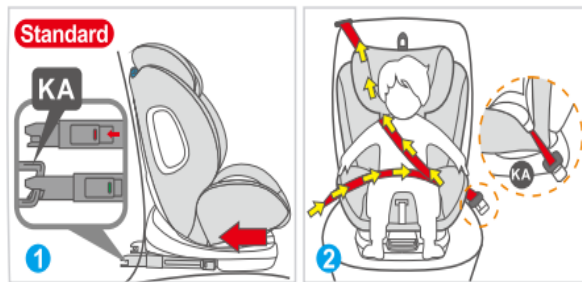
Adult three-point belt

- After the child sits into the car seat, pull out the car belt, let diagonal belt go under the headrest, and lap belt go through belt guide slot on the base, buckle it. Then tighten and flatten the belt.



Adult three-point belt+ FIX

- Put the child car seat on the vehicle seat in forward facing, adjust the seat body to Upright. Aim 2 FIX connectors to the ISOFIX anchorages on vehicle seat, push to make it connect, till you hear “Ka”.
- Continue push the child car seat, make it close to the vehicle seat back.
- Check the FIX release button, make sure the indicator turns to Green.
- After the child sits into the car seat, pull out the car belt, let diagonal belt go under the headrest, and lap belt go through belt guide slot on the base, buckle it. Then tighten and flatten the belt.

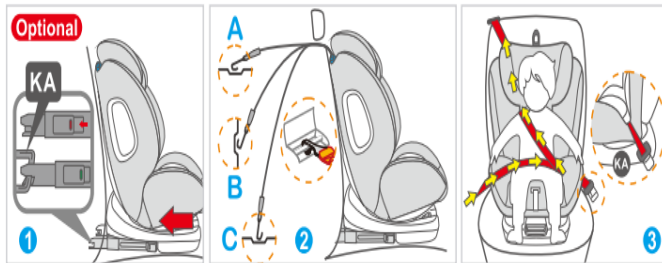


Adult three-point belt+FIX+ Top tether

- Put the child car seat on the vehicle seat in forward facing, adjust the seat body to Upright. Aim 2 FIX connectors to the ISOFIX anchorages on vehicle seat, push to make it connect, till you hear "Ka".
- Continue push the child car seat, make it close to the vehicle seat back.
- Check the FIX release button, make sure the indicator turns to Green.
- After the child sit into the car seat, pull out the car belt, let diagonal belt go under the headrest, and lab belt go through belt guide slot on the base, buckle it. Then tighten and flatten the belt.

Hook the "Top tether" strap to the anchorage point as shown with the spring hook. To tighten the top tether strap more easily pull the top of the seat towards the vehicle seat.

IMPORTANT: the indicator changes to show green.



5. Washing Instruction:

- The cover can be washed by machine, please use warm water and neutral detergent.
Please note: To ensure safety, the belts, shoulder pad are not allowed to remove and wash, if there are dirt, please use the warm water or neutral detergent to clean and line dry only, or contact the agency to change.
Quality guarantee terms:
 1. We guarantee one year, during these period, we'll maintain it when broken if it is normal used.
 2. Quality guarantee which are not included:
 - A. The worn mark which is left by normal use, or the damage caused by excess pressure.
 - B. The damage caused by unsuitable or incorrect use.