



SCARPA

the label

Lookbook Winter 2024

SCARPA THE LABEL FW24 – Time Revived

Designed in-house and encompassing a seasonal capsule that will be the perfect hero pieces in your wardrobe. Scarpa the label is 100% made by hand by our friends in Tuscany, Italy. All leathers and componentry are sustainably sourced ensuring minimal waste. These are our designs, our handpicked shoe makers and our passion.

Our third season of Scarpa the label “Time Revived” conveys the ongoing evolution and momentum of the brand, emphasizing the reworking of classics and the blending of timeless elegance with contemporary flair. We were inspired by the streets of Milan, a city that has long been associated with creativity, fashion, and design. Milanese women’s style is a balance of modernity and tradition; prioritizing quality over quantity, reflecting the city’s status as a global fashion hub with a rich cultural heritage.

Our winter 2024 collection will take you on a journey of quiet luxury and understated femininity. From the subtle elegance of ballet flats to the timeless sophistication of classic loafers and the bold allure of tall boots, each pair whispers tales of refined opulence. The colour palette featuring soft peach, cream, chocolate, navy and black are reassuring and timeless hues that perfectly align with the purist philosophy that less is more. This collection invites you to indulge in the subtlety of winter style, ensuring a seamless fusion of fashion and functionality for every facet of your winter wardrobe.

In creating this collection, we wanted to give our customers the foundations for a solid wardrobe with impactful footwear essentials that would provide a lowkey polished look while transitioning seamlessly from day-to-night.



ALICE \$479

Soft peach quilted nappa / tonal patent toe

Crafted from quilted soft peach smooth leather and soft peach patent leather, our 'Alice' ballet flat in this natural tone is both elegant and versatile. Wear them at the office or at the weekend with a cosy knit and jeans.



MARY \$450

White nappa / black nappa leather

Ballet flats happen to be both timeless and having a moment this season. The monochrome shades of our 'Mary' ballet flat will go with just about anything in your wardrobe



ROMA \$459

Black nappa leather

Scarpa's 'Roma' ballet flats add polish to suiting or to sharpen up soft silhouettes. On a slight heel, they are made from soft black nappa leather with a pretty bow atop the pointed toe. Constructed on a flexible sacchetto sole. The perfect alternative to heels.





ROMA \$459

Cream nappa leather

You can wear Scarpa's 'Roma' ballet flats with jeans or dresses this season. On a slight heel, they are made from soft nappa leather with a pretty bow atop the pointed toe. They're every bit as elegant as heels. Pair with just about anything in your wardrobe





SIENA \$459

Black nappa leather / tonal patent leather toe

Our sought after 'Siena' ballet flat is now available in black! A must have for all your outfit formulas. Made in Italy, the Siena fits & flatters all feet. Constructed on a flexible sacchetto sole. The timeless round toe and dainty bow complete this perfect footwear staple.



SIENA \$459

Ivory nappa leather / tonal patent leather toe

Our sought after 'Siena' ballet flat has been made in Italy from supple nappa/patent leather using a Sacchetto technique that allows the shoe to adapt to the natural curves of your feet. Timeless round toe and dainty bow complete this perfect footwear staple.



BLAKE \$479

Soft peach nappa leather / tonal heel

Our 'Blake' slingback pumps in the soft peach tone of the season, on a sculptural tonal mid-heel with flattering v-cut upper, offers that low key polished look we crave. Wear this staple with cozy knitwear or tailored pants. Style opportunities are endless!





BLAKE \$479

Black suede leather / tonal heel

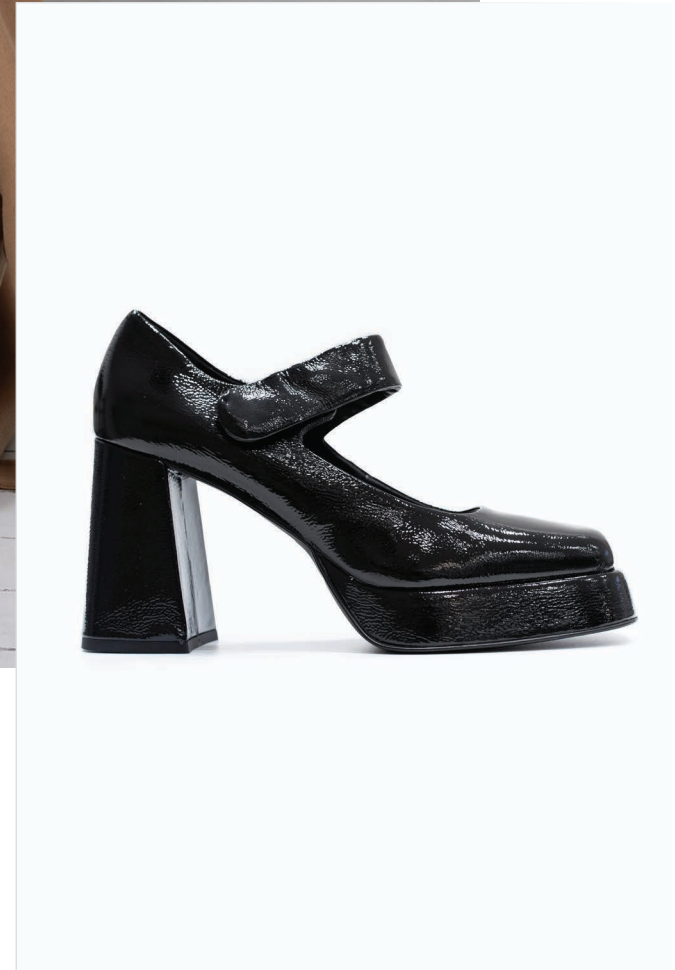
Our 'Blake' slingback pumps in black suede are as perfect for black tie dressing as they are for cocktail hour. The sculptural mid-heel flatters with a leg lengthening v-cut upper. Sure to become a cult classic.



FLORENCE \$489

Black soft patent leather

Our shoes are made in Tuscany using time-honoured techniques and this “Florence” pump in sleek black patent-leather is a wardrobe staple. Topped with a forever classic gold horse-bit hardware and resting on a mid block heel they are the easy- to-wear essential you need.



TAYLOR \$489

Black soft patent leather

Heeled May-janes are the slightly dressier minimalist footwear option to invest in this winter. Our soft patent 'Taylor' has a mid block heel and rests on a platform for that perfect combination of height and comfort.



CHARLIE \$469

Black nappa leather

A pair of Chunky Loafers is the Ultimate Cool-Girl Staple. Our 'Charlie' loafers offer a point of difference with a gold toggle detail and a light weight lug sole, which is ideal for navigating fickle winter weather.



CHARLIE \$469

Ivory nappa leather

Our 'Charlie' loafers are sure to be a best seller! A light yet chunky loafer in ivory leather with a taupe lug sole. The gold toggle & tassel add a luxe detail to this wardrobe essential.





OLIVIA \$489

Ivory nappa leather

Scarpa's 'Olivia' loafer looks chic with tailored pants, jeans or dresses so you'll get plenty of wear out of them. They've been hand made in Tuscany from ivory smooth nappa leather and are topped with gold-tone hardware.



BILLIE \$479

Black high shine leather

Scarpa's must have 'Billie' loafer uses feminine scallop detailing as its design feature. Made in Italy using the glossiest high shine leather-polished to perfection.



RYDER \$489

Black high shine leather

Our chunky platform 'Ryder' loafer in polished black will give you the lift you need this winter, pair with baggy jeans, oversize outerwear to mini dresses and skirts. This versatile shoe will stand the test of time.



RORY \$489

Black high shine leather

These chunky 'Rory' loafers have been made in Italy from glossy black leather and are set on cleated platform rubber soles to add a little height. Match your jewelry to the gold chain embellishment.





BERKLY \$529

Black high shine leather

There are few things more enduring than a pair of black Chelsea boots. Our 'Berkly' version is made from high shine leather, with flexible panels at the sides featuring unique scallop design detailing. The light weight lug sole adds the right amount of edge to your look.

HAWKE \$579

Black patent leather

Our 'Hawke' boot has been modeled on 70's styles with chunky platforms and block heels. They are made in Italy from soft black patent-leather. Wear yours with denim and tailoring alike.



NEVADA \$520

Taupe suede leather

The sleek pointed-toe proportions of Scarpa's 'Nevada' ankle boots will bring elegant structure to your looks. Made from soft taupe suede, with an elasticated pull on fit on a low every-day -wear heel. Pair with bohemian dresses or cropped denim.





NEVADA \$520
Black suede leather

The little black bootie is a wardrobe essential for winter. Our pointed-toe 'Nevada' boot in soft black suede is elegant enough to take you from daytime to evenings out.





CHLOE \$729
Black nappa leather

No winter capsule wardrobe is complete without a pair of tall boots. Our stunning 'Chloe' boot in glossy black nappa is elevated with subtle touches of gold hardware. Style with modern corporate staples like midi skirts and crisp shirt dresses.



CHLOE \$729

Chocolate nappa leather

The love for all things chocolate-y continues this winter with this undeniably chic tall 'Chloe' boot in delicious chocolate nappa leather with accents of gold detail. Simply irresistible!





Locations

15 Teed St, Newmarket | P - 09 520 1424
Commercial Bay, Auckland CBD | P - 09 358 4140
Level 2, Westfield 277, Newmarket | P - 09 218 9128

Website

scarpa.co.nz

Instagram

[@scarpa_the_label](https://www.instagram.com/scarpa_the_label)