

## AVANTE WALL HUNG TOILET



### Features

- WATER SAVING structure
- Dual Flush System
- Sleek skirted design with concealed trapway for easy cleaning

### Specifications

|                 |                   |
|-----------------|-------------------|
| Flush system:   | Wash Down         |
| Water Use:      | 4.5L / 3L         |
| Rough-in:       | H=220 mm          |
| Bowl Shape:     | Elongated         |
| Water Pressure: | 0.05MPa~0.75MPa   |
| Size:           | 360Wx540Dx330H mm |

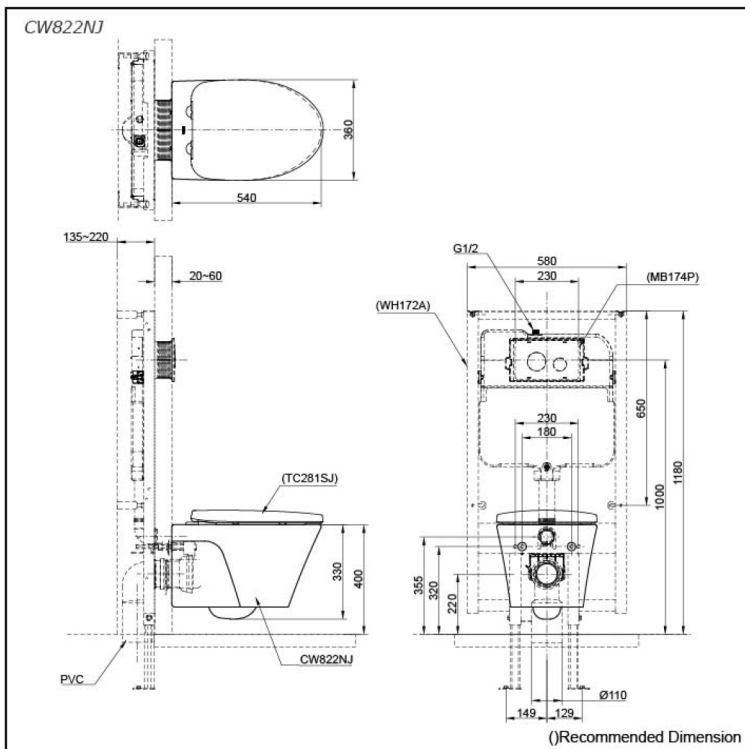
### Parts description

Fittings and Seat & Cover are not included

- **CW822NJ**  
Elongated Wall Hung Closet Bowl (P-Trap)  
(Rough-in 220)

#### Optional Parts

- WH172A  
Concealed Cistern w/Frame
- WH142A  
Concealed Cistern w/Frame  
(Low Type)
- TC281SJ  
Soft close Seat & Cover
- MB174P  
Flush Panel



### Colors

White

