



Installation Procedures
2014-2016 Porsche Boxster
SNS 82



Warning: Please read directions completely before starting. If you have any questions, please contact BMPP before beginning your installation. Also, please check our website (www.stonsho.com) for any updates or changes. Thank You.

Parts Included: License Plate mounting bracket Assembly. Includes Base Plate and License Plate Holder.

License Plate mounting Screws: (4) 6mm X 12mm (Phillips head) and 6mm nuts (10mm wrench size)

Base plate mounting bolts/screws: (4) 6mm X 20mm bolts with nuts or (4) 6.3mm X 20mm Screws.

Tools Needed: 10mm socket with ratchet Note: 1/4-inch drive preferred but 3/8 will work but extra caution will be needed when tightening screws.

Phillips Screwdriver and 10 wrench

1/8 or 1/4 inch drill bit and drill.

Step 1: Ensure all parts listed above are accounted for. Note: If at any time during the installation process you need assistance please call (408) 776-4080.

Step 2: Separate the license plate holder from the base by simply pulling the pull pin ring outward and sliding apart.

Step 3: Center base plate bracket as show in figure 1. **NOTE: On some vehicle the rubber air dam will have to be slightly folded back to allow rods to enter tubes. This ensures maximum ground clearance.** The bracket will be centered with front of the bracket up against the lip of the plastic under pan as shown in figure 2. Note: Double sided tape (Not Included) can be used to help hold bracket in place while aligning. Slide the front bracket into the tubes to verify alignment. Back of front plate should be approximately 1/4" from the front bumper. Remove when alignment is complete and continue to step 4.

Step 4: Once base plate is correctly positioned and while holding the plate in place, carefully drill two 1/8" pilot holes for the front mounting screws. See figure 3.

Step 5: Using either the 6mm bolts (If using the 6mm bolts the holes will be drilled to 1/4".) or screws secure the front of base plate to the vehicle. If you are using the 6mm bolts you must then remove three screws securing back of the body panel as shown in figure 4 to allow access to the bolt to secure with a nut. If using the 6.3mm X 20mm screws the following method must be used. Caution: When tightening the screws extreme care should be taken not to over tighten

screws or the hole may become stripped and lose its ability to secure the base plate. Place the screw into the pilot hole and begin to tighten. Once the screw is flush with the plate stop. Now tighten screw one half turn and stop. Repeat process for second screw.

Step 6: Verify alignment with front license plate bracket in place. If alignment is correct the front plate should be centered left to right and be approximately 1/4" from bumper, remove front license plate bracket and drill pilot holes for rear holes and follow step 5 for tightening.

Step 7: Secure the license plate and frame (optional) to the license plate bracket using the screws and nuts provided. Requires the Phillips screwdriver and 10mm wrench (Not included).

Step 8: Slide the license plate rods into the two tubes located on the base plate. Slide the rods into the tubes until the rods hit the pull pin. Simply pull the ring on the pull pin and advance the rods. Release ring and continue to advance rods until the pull pin locks into place. **Note: The rods and spring loaded pull pin are required to be sprayed periodically with WD-40 or any other silicone type spray lube. Failure to do so could result in either the failure of the pull pin or the rods becoming difficult to remove or reinsert. Note: In harsh environments, such as areas where roads are either salted or sanded in the winter, spraying of the rods and pull pin should be performed on a regular basis. Failure to provide this maintenance may void your warranty.** See figure 4. In some occasions the license plate may require a little adjustment to level. Simply pull pin and slide plate out approximately two inches, grab frame at arrows (See figure 5) and rotate. If plate is high on left or right side, rotate high side down slightly and release. Verify alignment and repeat as necessary. Once leveled plate will remain level.

Congratulations! You have just installed the STO N SHO™ (Patented) front license plate mounting system. Thank You for your purchase.

Caution: Bracket lowers ground clearance by approx 1/2 inch.

Remove prior to entering automated car wash

Exercise care when entering or exiting steep driveways or damage will occur

Parking Stops or high curbs, stop well before or damage will occur

Remove prior to running on track or racing

Medium skill level required. If unsure, have bracket installed by your local Dealer or Body shop.

Limited Lifetime Warranty (Excluding Pull-pin). Pull pin will be warrantied for a period of 1 year (12 months) from the date of purchase.

Big Mike's Performance Parts (BMPP) warrants to the original purchaser only that this product will be free of manufacturing defects in material and workmanship for the life of the product (Excluding pull-pin, see above) provided all maintenance is performed as required to the limitations and exclusions set forth below:

Return product to any authorized dealer. Contact BMPP for the dealer nearest you. Upon examination, BMPP or its representative will, at its sole option and expense, repair or replace any product found to be defective. If product to be replaced via mail, BMPP will return the repaired or replaced unit to you via its usual shipping method from the factory to your address in the United States of America or Canada only. Any shipping costs for addresses outside of the United States or Canada shall be the responsibility of the purchaser.

This warranty is not transferable.

REMEDIES FOR BREACH OF WARRANTY.

This Warranty does not include repair for damage caused by improper use or handling, including but not limited to damage caused by accident, mishandling, improper installation, abuse, negligence, or any defect caused by repair to the product by anyone other than BMPP.

This warranty does not cover reimbursement for your costs of removing and transporting the product for warranty service evaluation, or installation of any replacement product provided under this warranty.

This Warranty will be void if the product was not purchased from an authorized dealer or reseller.

THE FOREGOING WARRANTIES ARE EXCLUSIVE AND IN LIEU OF ALL OTHER EXPRESSED AND IMPLIED WARRANTIES. ALL SUCH OTHER WARRANTIES, INCLUDING BUT NOT LIMITED TO IMPLIED WARRANTIES OF MERCHANTABILITY, FITNESS FOR A PARTICULAR PURPOSE AND NON-INFRINGEMENT, WITH RESPECT TO THE PRODUCT. TO THE MAXIMUM EXTENT PERMITTED BY LAW, BMPP SHALL NOT BE RESPONSIBLE FOR ANY INCIDENTAL OR CONSEQUENTIAL DAMAGES EXCEPT TO THE EXTENT PROVIDED (OR PROHIBITED) BY APPLICABLE LAW, EVEN IF BMPP HAS BEEN ADVISED OF THE POSSIBILITY OF SUCH DAMAGES.

Notwithstanding the above, if you qualify as a "consumer" under the Magnuson-Moss Warranty Act, or applicable state laws, then you may be entitled to any implied warranties allowed by law for the Warranty Period. Further, some states do not allow limitations on how long an implied warranty lasts or allow the exclusion or limitation of consequential damages, so such limitations may not apply to you. This warranty gives you specific legal rights, and you may also have other rights which vary from state to state.

For the name of your nearest authorized STON SHO dealer, contact: Big Mike's Performance Parts at (408)776-4080 or go to www.stonsho.com

Fig 1.



Fig 2

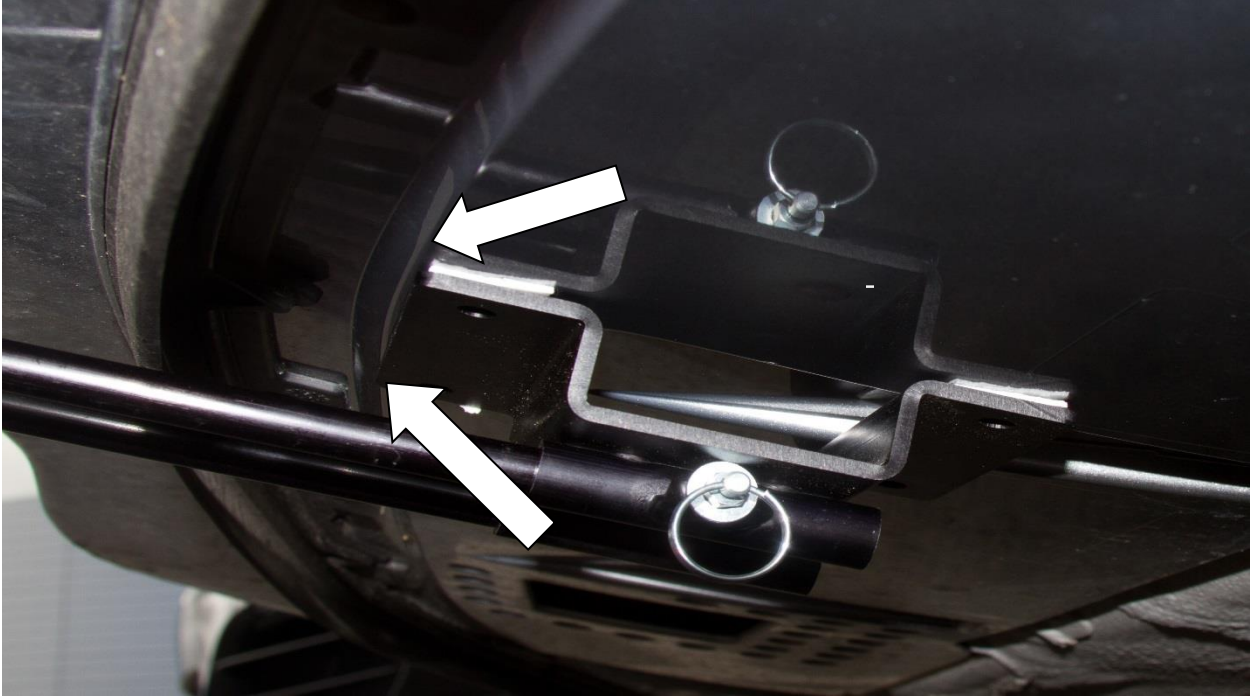


Fig3

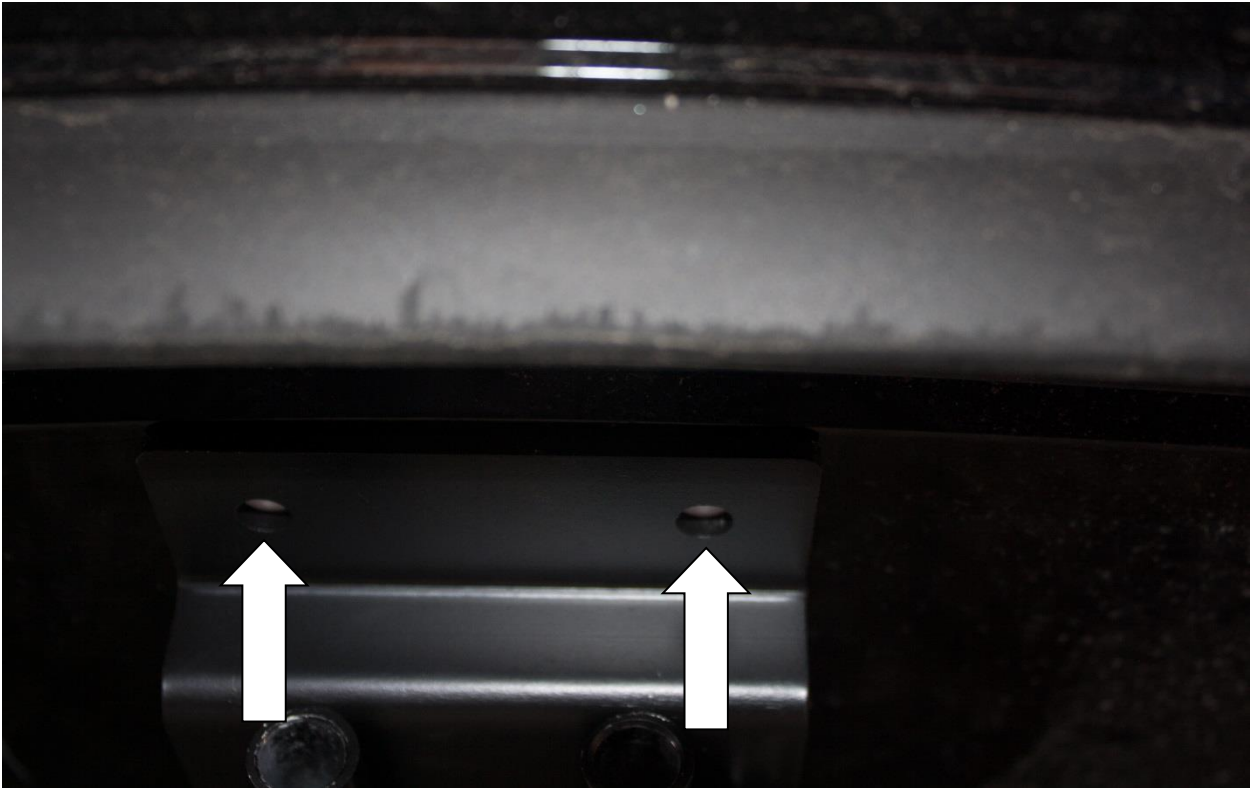


Fig 4

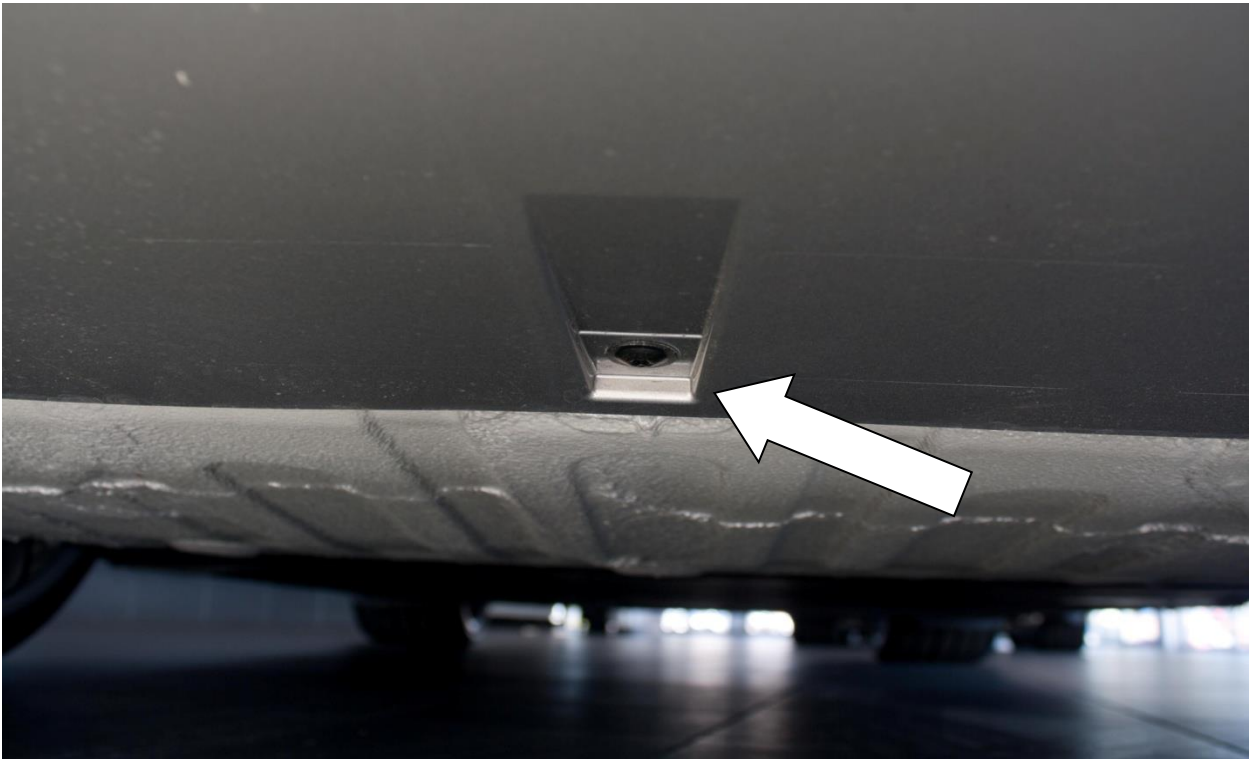


Fig 5

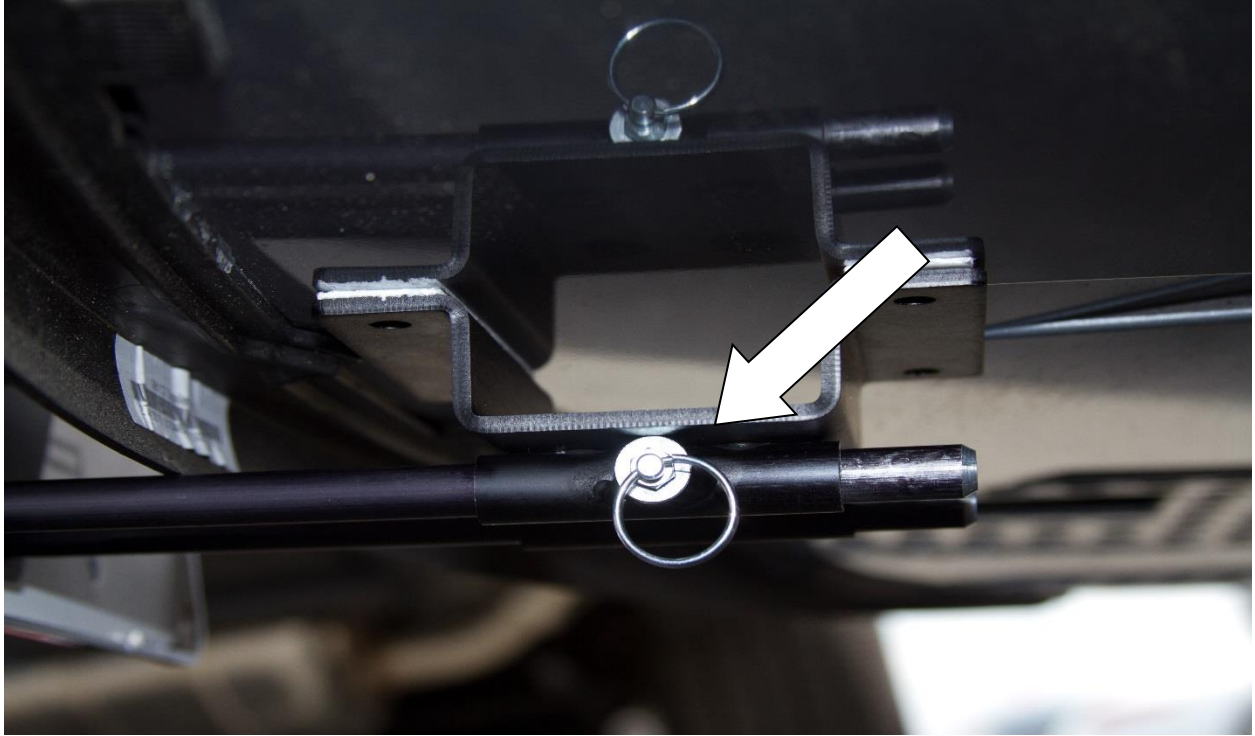


Fig6

