

vive[®]
PRECISION



DIGITAL SCALE
Compatible with Smart Devices

Owner's Manual
DMD1O52MAR

vivehealth.com

Thank you for choosing our product. Please read the instruction manual carefully before use and keep it for future reference.

OVERVIEW

We are constantly answering questions and recording helpful videos to make using your Vive Precision Digital Scale as easy as possible. Check out the included links and QR codes to help you through the process.



To see all of the FAQs in one place, check out vhealth.link/iuu

OPERATION



For initial setup instructional video, check out vhealth.link/gka

Connecting to Your Smart Device

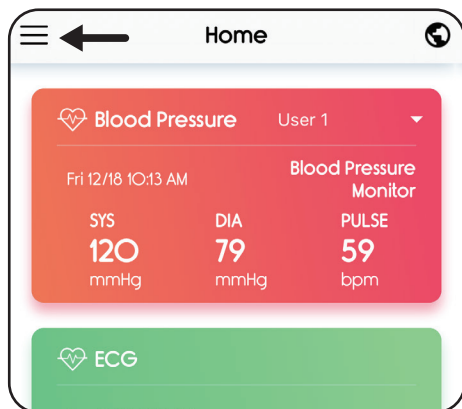
Follow these steps to connect to your device:

The **Vive Precision** app is available for download on the Apple Store or Google Play store. The app is compatible with iOS and Android devices (iOS version 8.0 or higher, Android version 5.0 or higher).

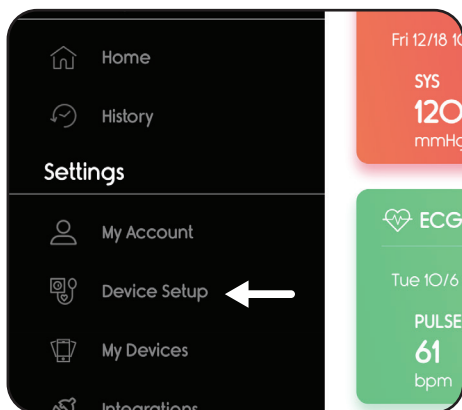
Before connecting to the Vive Precision app, ensure that the batteries are inserted correctly.

1. Download the **Vive Precision** app. It is available for iOS and Android devices on the App Store and the Google Play Store.
2. Sign up to create an account, or sign in if you already have an account. Please note that you must create an account in order to use the app.
3. Step lightly on the device to activate the smart device capabilities of the device, then wait for the screen light to switch on.

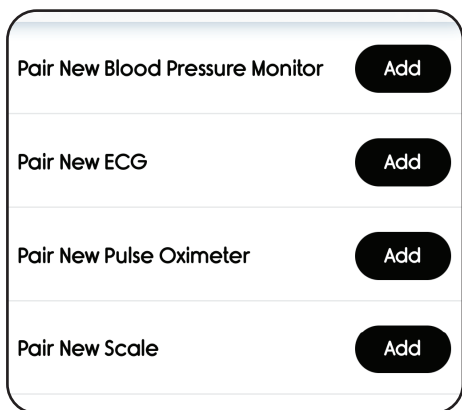
4. Select the menu icon.



5. Select "Device Setup".



6. Select "Add" to choose your scale and begin the pairing process. Follow the presented steps to successfully connect your device.



Now follow the instructions on the app to complete the device pairing.

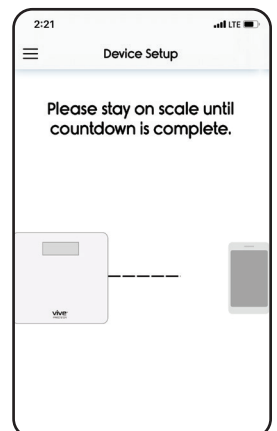
7. Stand on the scale to turn the device on and begin the pairing process. It is recommended to stand on the scale with bare, dry feet. This will allow you to receive the most accurate weight measurement.



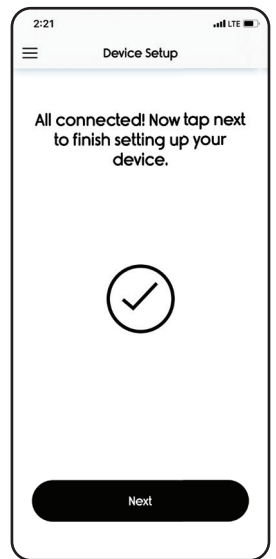
8. Now you will be able to see the device naming ID. Select the device to move on to the next step. Note that it is best to pair your device away from other smart devices, routers, or other electronic devices as they may cause interference and interrupt the pairing process.



9. Remain on the scale until your measurements are displayed on the scale's display. After the measurement has been completed successfully, the app will automatically move to the next screen.

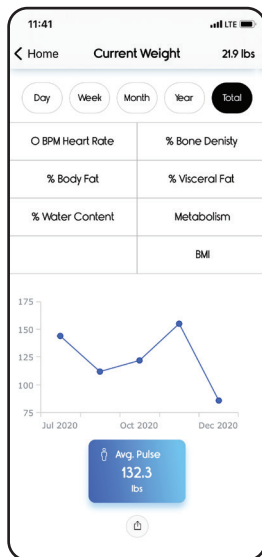
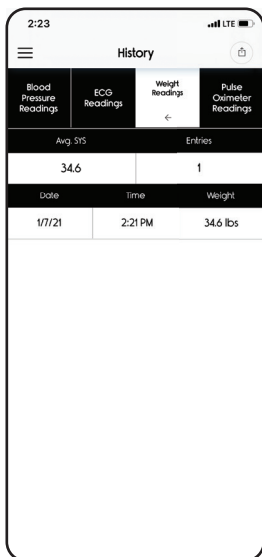
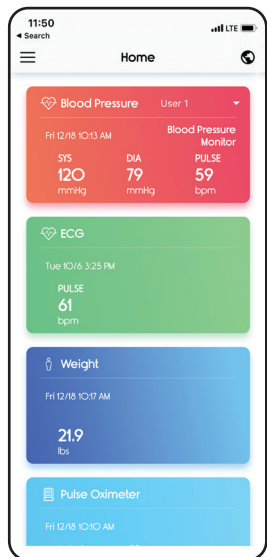


10. If your device has been connected successfully, you will see this screen.



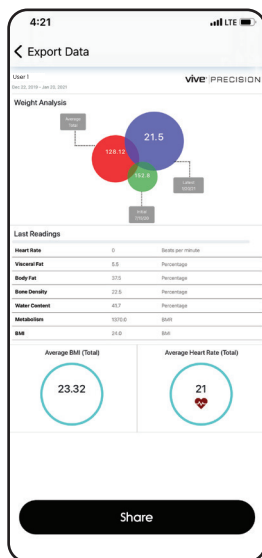
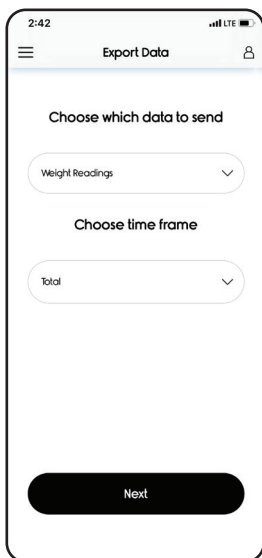
11. You now have the ability to change the name of your device if you wish to do so. By default, the name is set to "Body Weight Scale"
12. Once your device is paired, you can begin taking additional measurements. To transfer data to the app, simply stand on the scale and wait for your results to appear. You must have the app open while you are taking a measurement to transfer the data.
13. Your measurements can be found both on the home screen and in the History section, located in the menu.

On the home screen, the box labeled "Weight" will provide a brief summary of your most recent measurement. For a comprehensive measurement, click on the box to view more details. You can also see all of your weight measurements in the History section.



Sending Measurements

- You also have the ability to send your measurements to a physician or relative. To do so, go to the Export Data section located in the Menu.
- Here you can choose the type of measurement you would like to send as well as the desired time frame.
- You will then see a PDF summary that can then be sent to the respective recipient via numerous communication methods.
- For this scale, only the weight readings will transfer because this scale only measures body weight.



How to Change the Units

Open the battery compartment to find the button to change units. The default unit is pounds. Press once for stone. Press twice for kilograms. Press again to return to pounds.

- The available measurement units are: centimeters, inches, and miles.
- The available weight measurements are kilograms, pounds, and stones.

How to Take a Measurement

- Put the scale on a hard, flat surface. Turn on the scale so that the display shows "00.0".
- Step onto the platform of the scale with bare feet. Stand as still as possible until the weight reading appears and locks on the display.
- Wait until the measurement data is shown in the app.
- For the best results, complete the measurement process in this order:
Weigh - Analyze - Test Complete

How to Insert the Batteries

1. Lift up the scale and flip it over so that the feet are facing up.
2. Locate the battery cover and open the cover.
3. Insert three AAA batteries according to polarity.
4. Put the battery cover back in place and close.

Error Messages

Overload or Measure in Error:

The LCD screen will show "Err" when the maximum capacity (approximately 400 lbs./180 kgs.) of the scale has been exceeded.

To avoid damage, remove the weight from the scale.

Low Battery:

The LCD screen will show "Err" when the batteries are low. Open the battery cover, remove the batteries, and reinsert new batteries according to polarity marks.

CARE

- To clean the scale platform, use a soft cloth with alcohol or glass cleaner. Do not use soaps or chemicals to clean the scale.
- Keep the scale away from water, heat, and extreme cold.

SPECIFICATIONS

1. **Maximum Capacity:** 396lbs./180kgs.
2. **Auto On and Auto Off Remark:** The scale will automatically switch on when weight of 10 lbs. or more is placed on it.
3. **Measurement:** Body Weight
4. **High Precision Strain Gauge Sensor System and High Performance CPU:**
Ensure accuracy.
5. **Low Battery and Overload Indication:** Inform user when battery is low or when too much weight is placed on the scale.
6. **Battery Power:** The scale uses three AAA batteries. For the first time use, open the battery cover and insert the batteries according to polarity marks. If the scale fails to operate, remove the batteries completely and reinsert them.

CAUTIONS

- The scale is slippery when wet. Ensure that the scale platform and your feet are completely dry before use. Never step onto the scale platform with wet feet.
- Remove all shoes and socks before stepping onto the scale.
- If the scale malfunctions, start by checking the batteries and replacing them if needed.
- Never jump, stomp, roughly handle, or disassemble the scale, as it's a high-precision measuring device. Handle it carefully to avoid damage when moving it.
- The scale is designed for home use only and isn't suitable for professional use. Body weight measurements are for personal reference only.
- Contact a doctor prior to starting any diet or exercise regimen.

HAVE MORE QUESTIONS?

Check out our list of Frequently Asked Questions at vhealth.link/iuu for helpful answers.



And if that doesn't answer your question, our customer service team would love to help! Feel free to connect with them by phone, e-mail, or chat on our website.

 service@vivehealth.com

 1-800-487-3808

 vivehealth.com

Distributed by

vive
health

8955 Fontana Del Sol Way
Naples, FL 34109
Made in China