

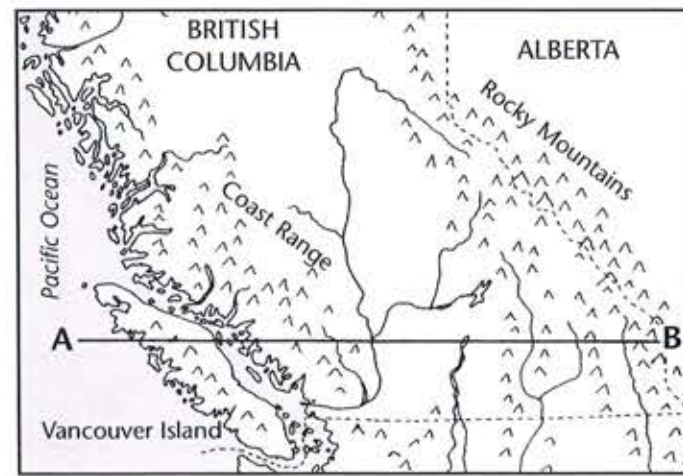
# Reading a Cross-Section

A cross-section is like a profile or side view that shows the elevation of a section of land. Like a map, a cross-section shows area in two dimensions. The east-west cross-section below is through southern British Columbia. The vertical scale is exaggerated.

Much of British Columbia is made up of parallel mountain ranges. The most easterly and largest mountain range is the Rocky Mountains. On the west side of the Rockies is the longest valley in North America — the Rocky Mountain Trench. Farther west are the interior ranges — Purcell, Selkirk, Monashee and Cariboo Mountains.

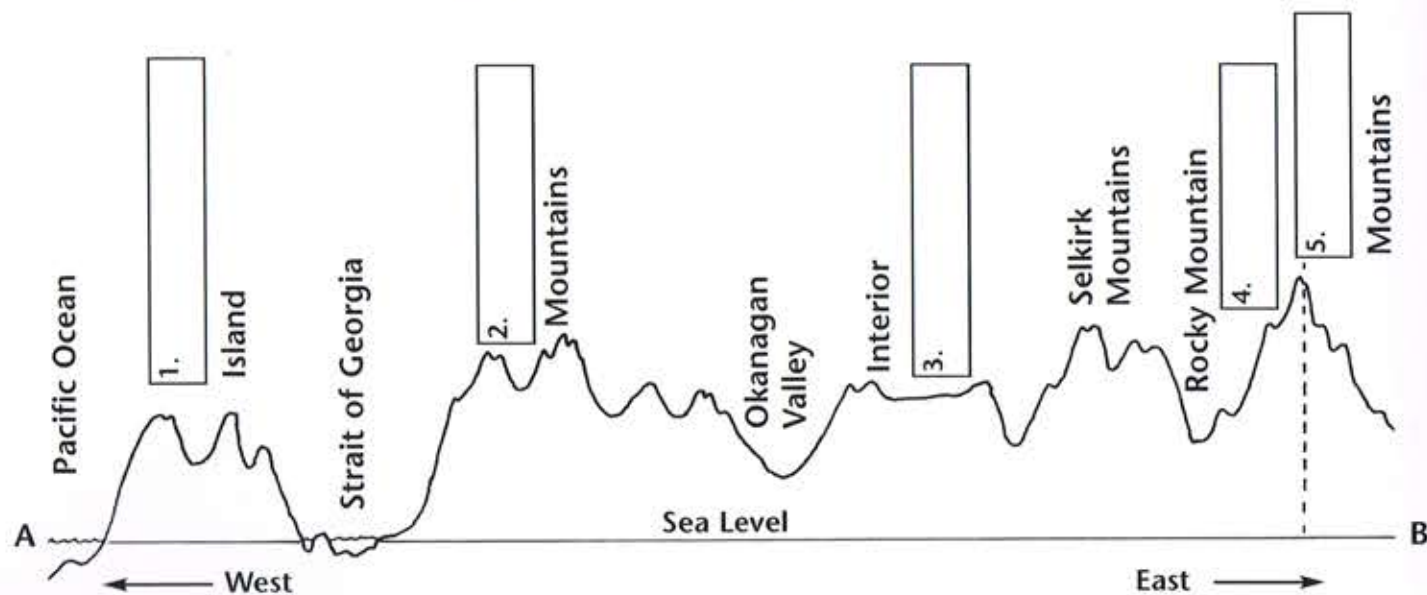
Farther west is an interior plateau that is cut by deep rivers like the Okanagan. Along the western edge of British Columbia's mainland is the Coast Range.

The many islands off the coast of British Columbia and Alaska are the tips of underwater mountains. Vancouver Island and the Queen Charlotte Islands were also formed from partly submerged mountain ranges.



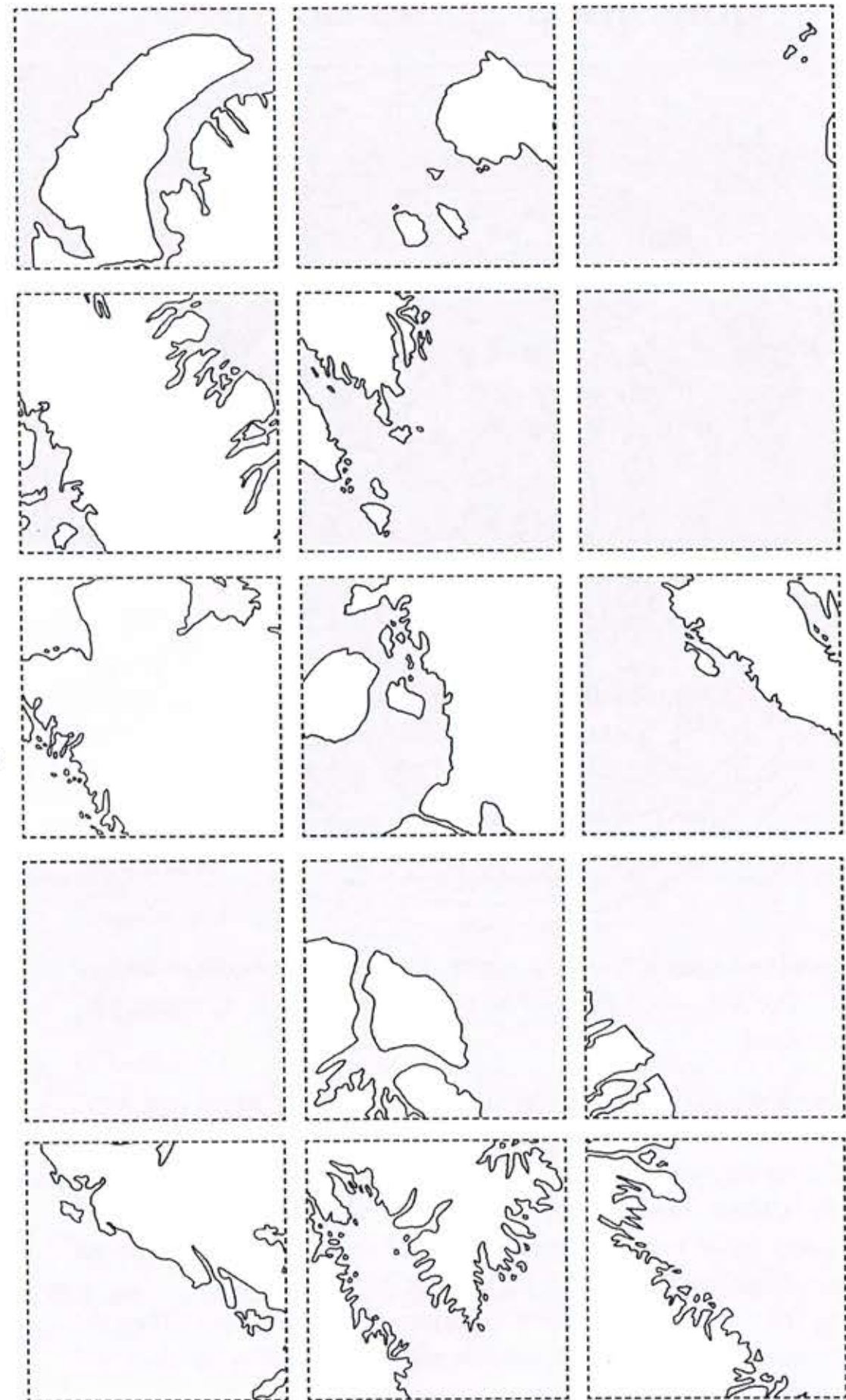
Area of British Columbia in Cross-section

Put the correct word in each box.



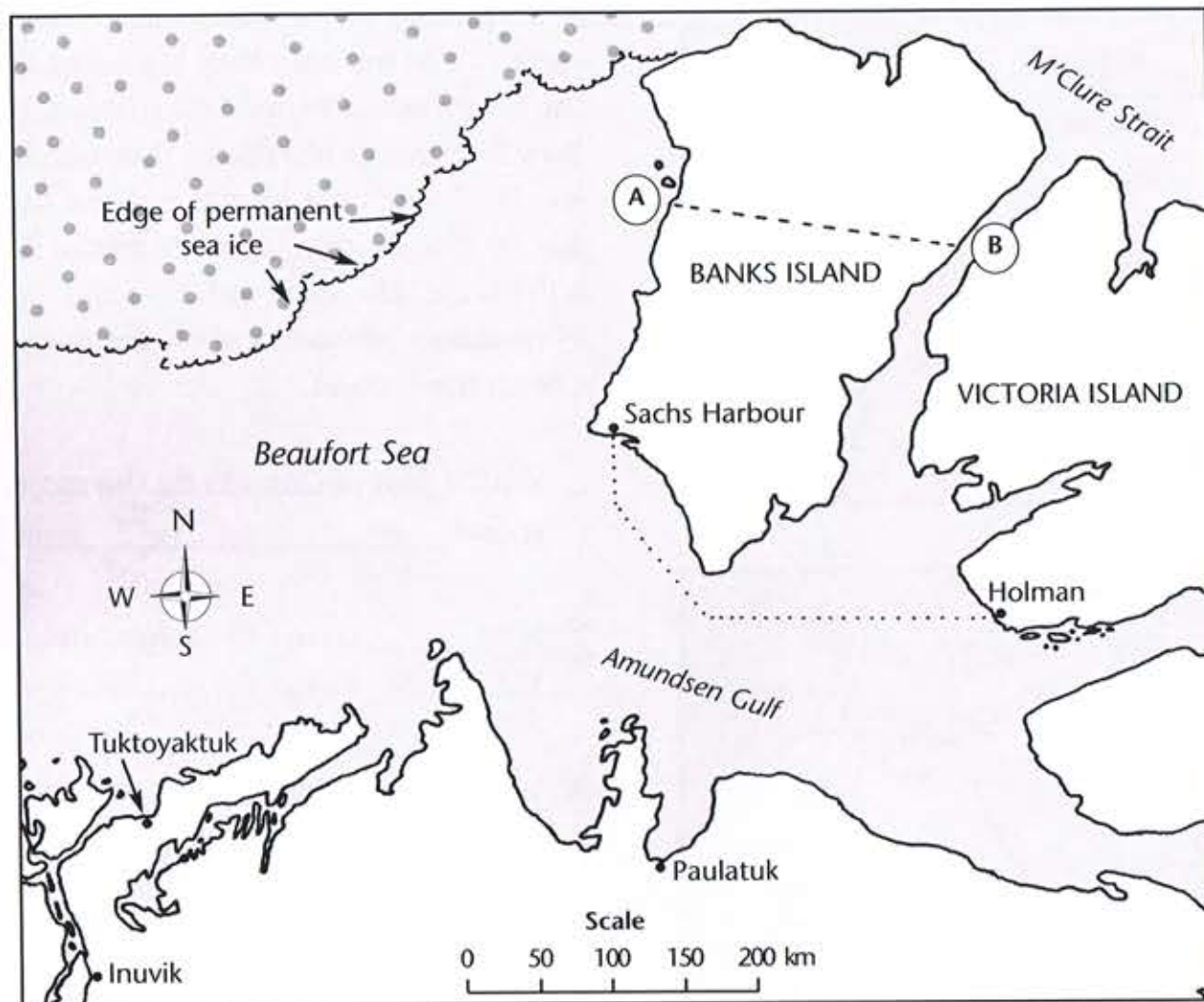
Cross-section through southern British Columbia at 50 °N

## Map Puzzle



1. Cut out the 15 squares.
2. Paste the 15 pieces on a sheet of paper to create an outline of Canada's largest island.
3. Colour the water area blue. Draw a border around your finished map.
4. Print the name of Canada's largest island on your map.

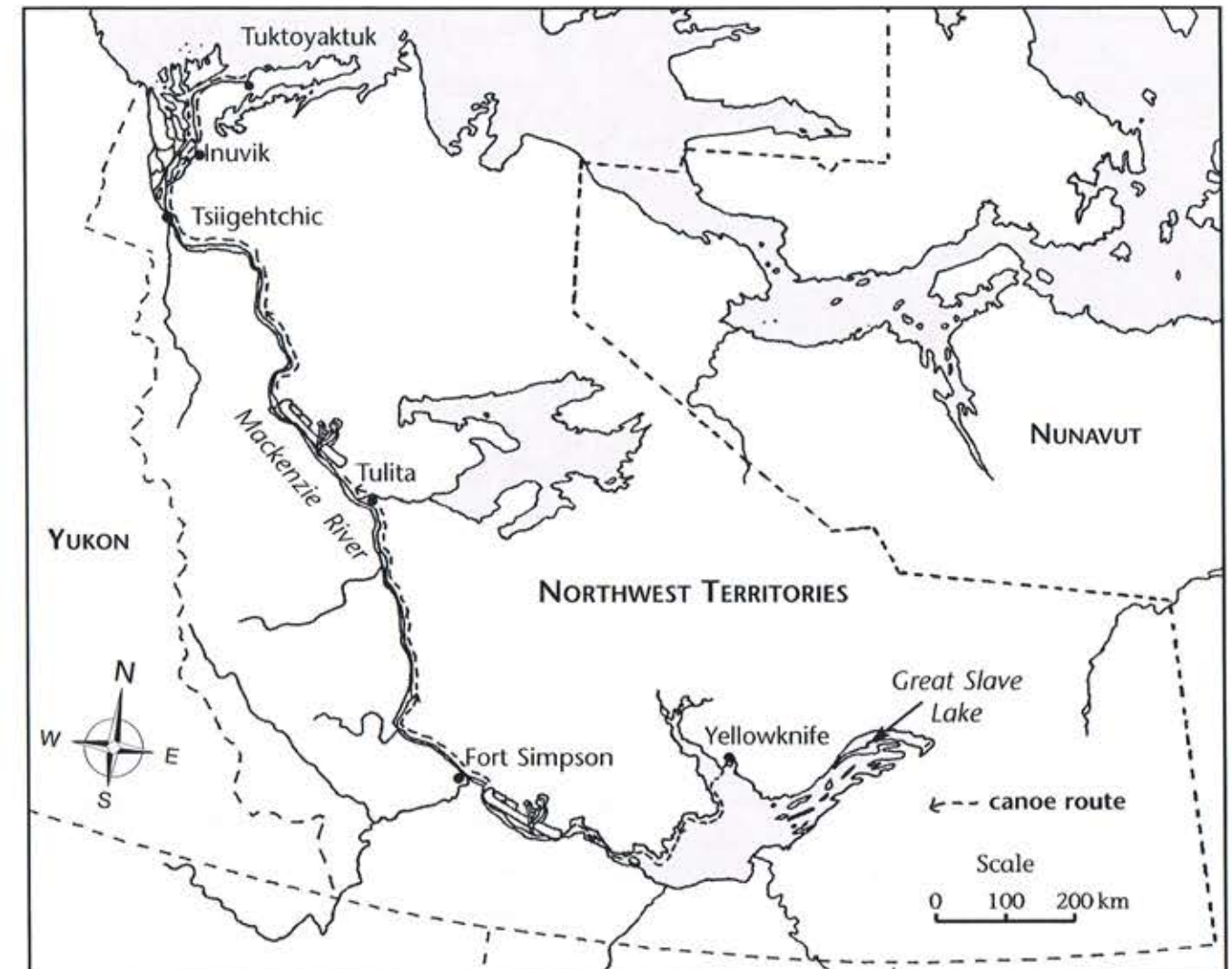
## Measuring Straight-Line Distances



The map scale shows that 1 cm on the map represents \_\_\_\_\_ km on the ground.

1. The distance across Banks Island, between points A and B, is \_\_\_\_\_ km.
2. The distance from Inuvik to Paulatuk is \_\_\_\_\_ km.
3. From Sachs Harbour to the closest edge of the permanent sea ice is \_\_\_\_\_ km.
4. a) A plane flies from Sachs Harbour to Holman. The air distance is \_\_\_\_\_ km.  
b) A boat leaves Sachs Harbour for Holman. The map shows its route. The distance by water is \_\_\_\_\_ km.
5. A plane leaves Holman for Paulatuk. From there it goes to Tuktoyaktuk, then returns directly to Holman. The total distance by air is \_\_\_\_\_ km.

## Calculating Curved-Line Distances



Fill in the blanks of this paddler's summary of a canoe trip down the longest river in Canada — the Mackenzie. Use the route detailed on the map and the scale for help.

*"Left Yellowknife at dawn, keeping close to the shore of Great Slave Lake. Entered the mighty Mackenzie, then on to Fort Simpson, a distance of nearly \_\_\_\_\_ km. Continued downstream to Tulita for another \_\_\_\_\_ km. Still only halfway to our destination. Headed north to Tsiigehtchic, a community about \_\_\_\_\_ km downstream from Tulita. Paddled through the rough waters of the Mackenzie Delta, past Inuvik, then on to Tuktoyaktuk on the Beaufort Sea for another \_\_\_\_\_ km. Total distance by canoe down the Mackenzie from Yellowknife to Tuktoyaktuk, nearly \_\_\_\_\_ km."*

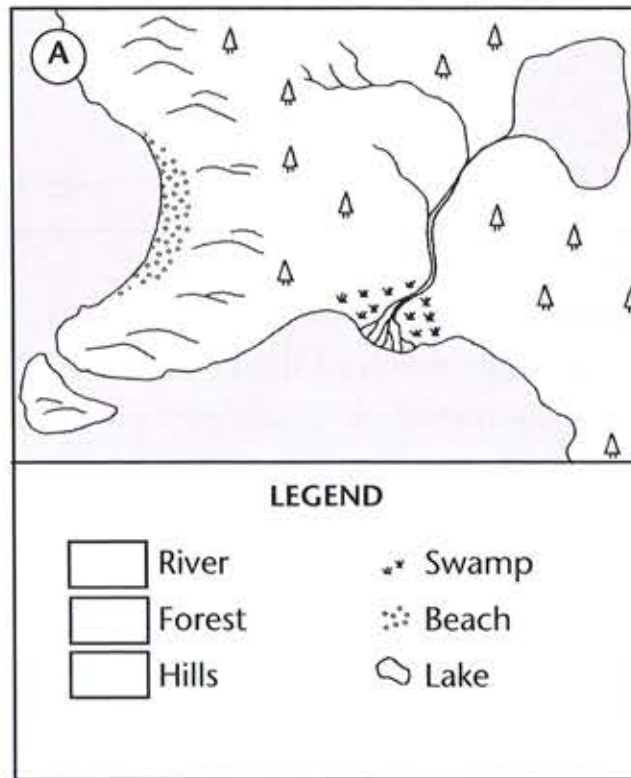
# Physical and Cultural Symbols

Map symbols can be divided into two main groups: nature-made or physical features, such as a river or a cliff, and people-made or cultural features, such as a road or building.

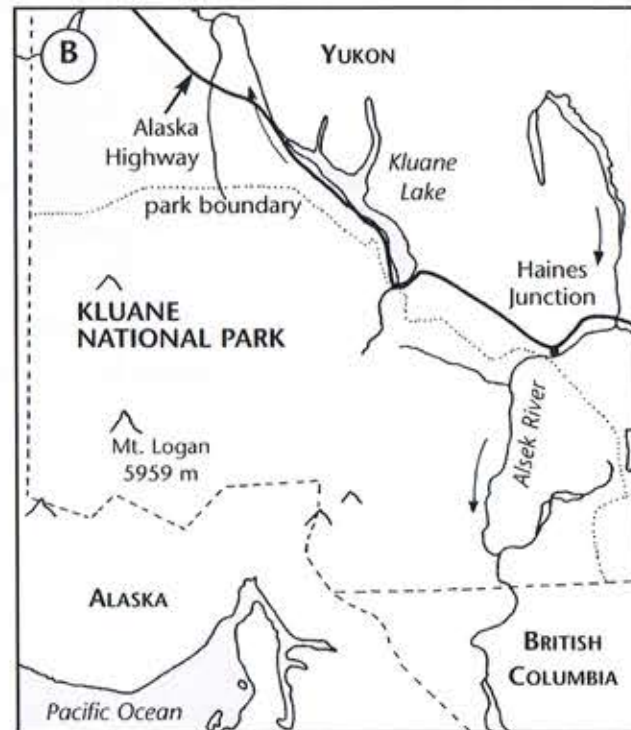
1. Put each word below in the proper column.

- |         |           |
|---------|-----------|
| airport | hospital  |
| bridge  | island    |
| canal   | orchard   |
| forest  | swamp     |
| highway | town      |
| hill    | waterfall |

Physical Symbols	Cultural Symbols



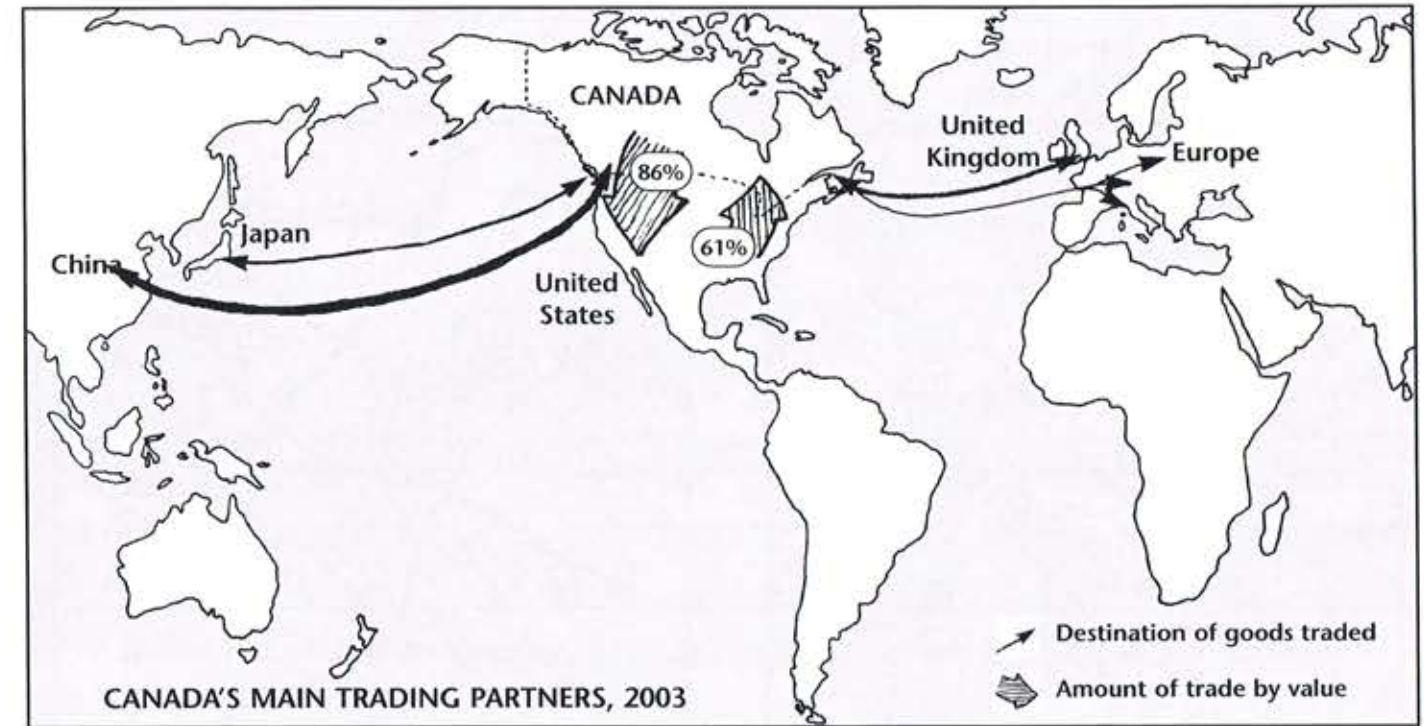
2. Map A contains six physical symbols. Complete the legend to show all six symbols. Draw two cultural symbols on the map. Show these symbols in the legend.



3. Map B shows Kluane National Park in the southern Yukon.

- Circle four physical symbols on this map.
- Underline four cultural symbols on the map.

# Symbols to Summarize Information



Symbols are often used to present technical information on a map. The map above shows Canada's main trading partners in 2003.

- Which map symbol shows the **flow and direction** of trade between Canada and other countries? \_\_\_\_\_.
- In 2003, most of Canada's exports went to this country: \_\_\_\_\_.  
How does the map show this information? \_\_\_\_\_.
- In 2003, most of Canada's imports came from this country: \_\_\_\_\_.  
How does the map show this information? \_\_\_\_\_.
- Canada's most important trading partner is \_\_\_\_\_.
- Two of Canada's other trading partners are \_\_\_\_\_ and \_\_\_\_\_.
- How does the map represent the amount of trade by value between Canada and its main trading partners? \_\_\_\_\_.
- Two of Canada's main exports are machinery equipment and automobiles. Does the map provide this information? \_\_\_\_\_.