



**Fittell**  
**GYM**  
S I N C E 1 9 8 9

WHOLESALE CATALOG

**2016**

# PITBULL GYM

Pitbull Clothing Co. is one of the bodybuilding industries leading men's fitness apparel brands.

Established in 1989, Pitbull Clothing Co. has been dominating its competitors by providing superior quality fitness apparel essentials. All products are 100% made in the U.S.A. Pitbull has and always will stay true to what we stand for which is exceptional quality, cutting-edge designs, and overall bodybuilder satisfaction.

Our clothing was made for the active man who demands nothing less than hard-hitting, high quality, exercise and gym-wear apparel. Pitbull Clothing Co. was created and inspired by the extreme bodybuilder, athlete, and health enthusiast. We stand behind what we sell and will always provide you with first-class customer service, satisfaction guaranteed.

**[WWW.PITBULLGYM-WHOLESALE.COM](http://WWW.PITBULLGYM-WHOLESALE.COM)**  
**DIRECT ORDERS: 1-800-524-2350**



Pitbull Clothing Co. is proud to introduce the newest line of men's workout apparel...

# PITBULL BLACK

Launched in 1989, Pitbull Gym is the premier product in the bodybuilding community. From its debut as a Gym Line, the brand now encompasses athletic and after gym clothing designed and produced entirely in the USA. The Pitbull Black collection has recently emerged from the need for premium clothing for athletic training, as well as casual wear. When Pitbull celebrated its 25th anniversary, a request to loyal customers was sent asking what they wanted carried forward from Pitbull for the next generation. Direct responses included quality, style, incredible fabrication and most importantly fit and usability.....

Pitbull BLACK has arrived.



## THE "BILLY BOY" PULLOVER PB02

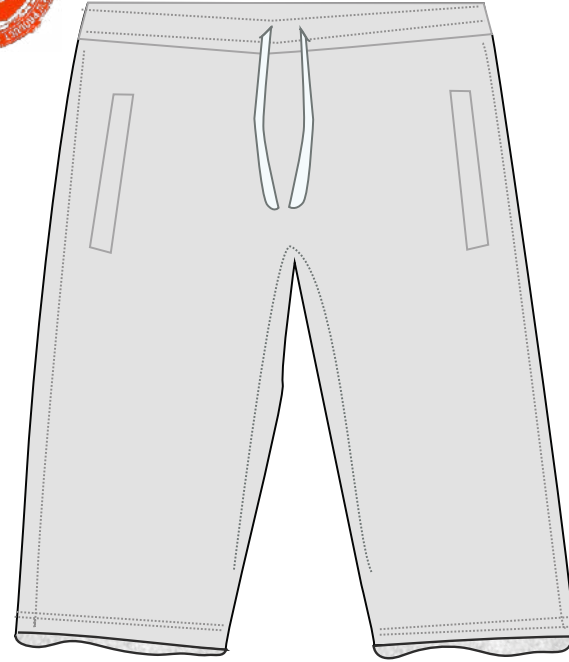
The Billy Boy Hoodie is a heavyweight workout essential made famous by legendary NFL coach Bill Belichick. Perfect for training in or out of the gym, the Billy Boy short sleeve hoodie provides a versatile look for multi-season use. The raw edge short sleeves allow for a full range of motion and layering options for cold weather. Scoured french terry tri-blend fabric keeps you warm while providing a soft, comfortable feel. The adjustable hood features a thick woven drawstring cord. Featuring our signature Pitbull Black label.

- Drawstring cord closure
- Front pouch pocket
- Raw edge cut sleeves
- 75% cotton French terry blend, 18% polyester, 7% Rayon
- Made in the USA

AVAILABLE SIZES

M / L / XL / XXL

AVAILABLE COLORS



## RAW EDGE POCKET SHORTS PB15

The Raw Edge Pocket Shorts from our premium Pitbull Black Collection are crafted from a thick French terry material with a soft feel and heavy weight. A corded woven drawstring and elastic waistband create the perfect fit. Lined side slit pockets with raw edge detailing allow you to carry a few essentials as you tackle your workout. Also featuring reinforced raw edges at the hem, pocket and waist and our signature Pitbull Black label.

- Drawstring cord closure + elastic waistband
- 2 side pockets
- Reinforced raw edge hems
- 75% cotton French terry blend, 18% polyester, 7% Rayon
- Made in the USA

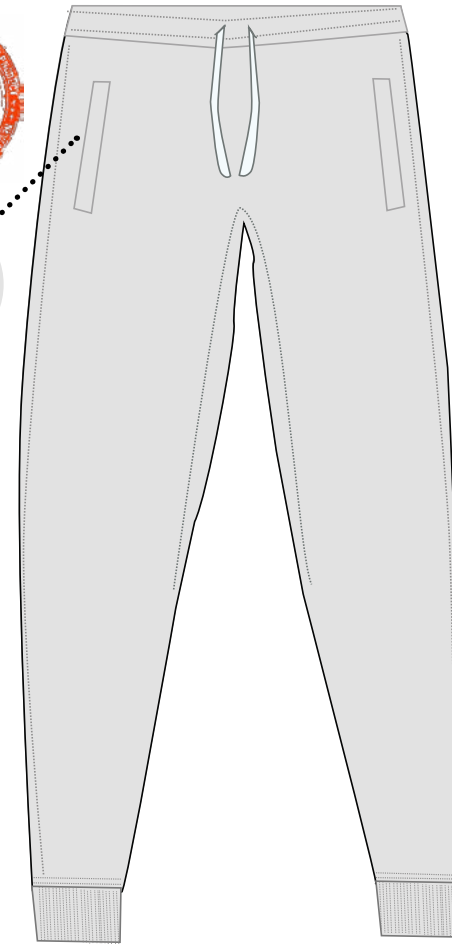
AVAILABLE SIZES

S / M / L / XL

AVAILABLE COLORS



Inner zipper pocket



## SLIM FIT CUFF JOGGER PANTS PB20

The Slim Fit Cuffed Jogger Pants from our premium Pitbull Black Collection are crafted from a thick French terry material with a soft feel and heavy weight. A corded woven drawstring and elastic waistband create the perfect fit. Lined side slit pockets allow you to carry a few essentials as you tackle your workout. Versatile look, wear them calf length or full length. Featuring a second zippered pocket, slim fit and cuffed legs, as well as our signature Pitbull Black label.

- Drawstring cord closure + elastic waistband
- 2 open pockets, 1 zippered pocket
- Cuffed legs
- 75% cotton French terry blend, 18% polyester, 7% Rayon
- Made in the USA

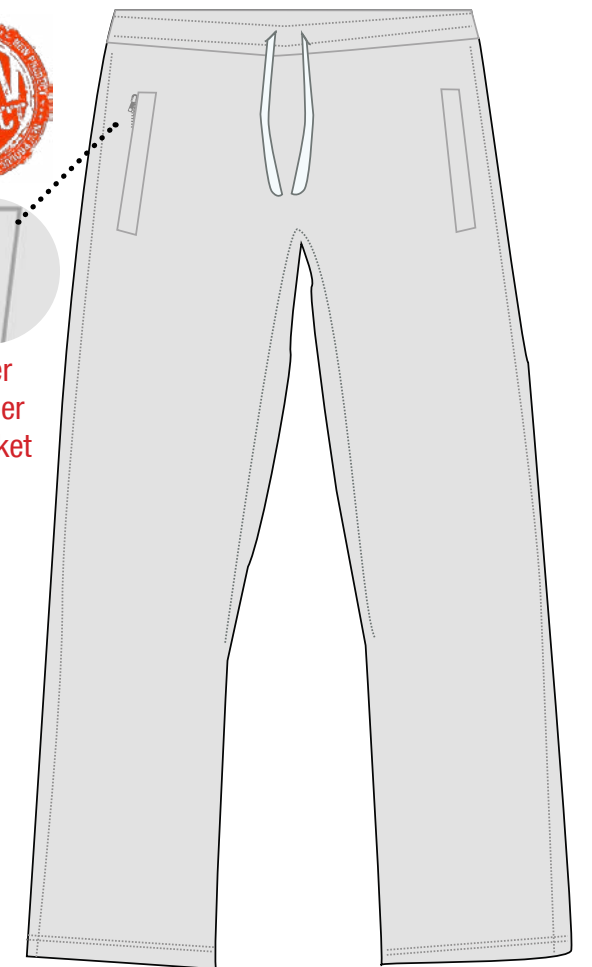
AVAILABLE SIZES

S / M / L / XL

AVAILABLE COLORS



Inner zipper pocket



## STRAIGHT LEG BEST FITTING PANT PB06

Featuring a classic fit, our Straight Leg Best Fitting Pants are crafted from a thick French terry material with a soft feel and heavy weight. A corded woven drawstring and elastic waistband create the perfect fit. Lined side slit pockets allow you to carry a few essentials as you tackle your workout. Also featuring a second zippered pocket and our signature Pitbull Black label.

- Drawstring cord closure + elastic waistband
- 2 open pockets, 1 zippered pocket
- Classic straight leg fit
- 75% cotton French terry blend, 18% polyester, 7% Rayon
- Made in the USA

AVAILABLE SIZES

S / M / L / XL

AVAILABLE COLORS





## DRI-FIT STRINGER HOODIE M530

This light-weight, sleeveless hoodie is made from DRI-FIT fabric that helps keep you dry with moisture wicking abilities. Comfortable, durable and contouring to ensure a perfect fit for your most intense workouts. Featuring a diagonal color block design and hood stripe for a unique look.

AVAILABLE SIZES:

M / L / XL / XXL

AVAILABLE COLORS:



## DRI-FIT STRINGER HOODIE M532

This light-weight, sleeveless hoodie is made from DRI-FIT fabric that helps keep you dry with moisture wicking abilities. Comfortable, durable and contouring to ensure a perfect fit for your most intense workouts. Featuring a contrast color front pocket and trim for a unique look.

AVAILABLE SIZES:

M / L / XL / XXL

AVAILABLE COLORS:



## DRI-FIT STRINGER HOODIE M538

This light-weight, sleeveless hoodie is made from DRI-FIT fabric that helps keep you dry with moisture wicking abilities. Comfortable, durable and contouring to ensure a perfect fit for your most intense workouts. Featuring a contrast side panels and hood stripe for a unique look.

AVAILABLE SIZES:

M / L / XL / XXL

AVAILABLE COLORS:



# DRI-FIT HOODIE STRINGER

# HARD HITTING HOODIES



## PITBULL GYM PULLOVER HOODIE M561

Pitbull Gym Long Sleeve Hoodie features contrast threading and our vintage Pitbull Gym print. These pullover hoodies are convenient to throw on before, after, or during your workout. Our tri-blend fabric used for all Pitbull Gym hoodies allows for extreme comfort and maximum flexibility.

AVAILABLE SIZES:

M / L / XL / XXL

AVAILABLE COLORS:



## BARBELLS PULLOVER HOODIE M565

Our new Barbells Pullover Hoodie is a training apparel essential. Featuring contrast color threading and our revived "Pitbull Barbells" print. Our pullover hoodies are built to last and the unique tri-Blend fabric is lightweight and comfortable making it a "go-to" for training in any season.

AVAILABLE SIZES:

M / L / XL / XXL

AVAILABLE COLORS:



## VARSITY PULLOVER HOODIE M567

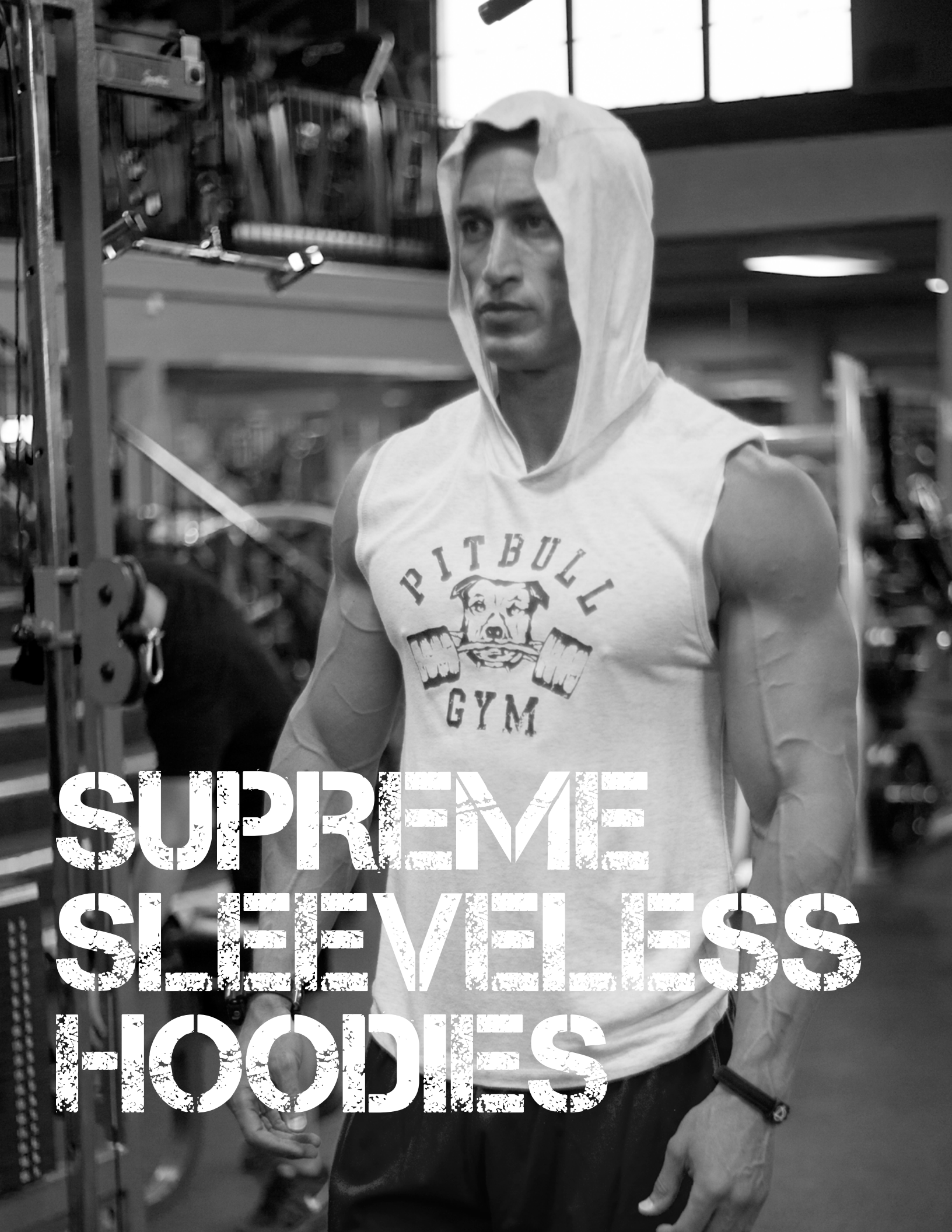
Our Varsity Pullover Hoodie features contrast color threading and our "Varsity Pitbull Gym" print on the upper left side. This long sleeve hoodie is flexible and durable. Perfect for extreme lifting or hard-core training sessions. Our tri-Blend lightweight fabric makes this top ideal for both indoor and outdoor workouts.

AVAILABLE SIZES:

M / L / XL / XXL

AVAILABLE COLORS:





# SUPREME SLEEVELESS HOODIES



## BARBELLS SLEEVELESS HOODIE M525

The Barbells Sleeveless Hoodie is a must-have in your training apparel. Featuring a contrast threading and our re-released vintage Pitbull Barbells print. Constructed out of our heather tri-blend material, which is a unique mix of cotton, poly, and rayon, gives it a soft and lightweight feel making this hoodie ideal during any training season.

AVAILABLE SIZES:

M / L / XL / XXL

AVAILABLE COLORS:



## VARSITY SLEEVELESS HOODIE M527

Our Varsity Sleeveless Hoodie features contrast threading and our Varsity Pitbull Gym print on the upper left side. Our Varsity Sleeveless Hoodie is for the serious body builder who needs to show his guns! The lightweight tri-blend fabric makes this sleeveless hoodie ideal for both indoor and outdoor workouts.

AVAILABLE SIZES:

M / L / XL / XXL

AVAILABLE COLORS:



## PITBULL GYM SLEEVELESS HOODIE M529

Our Pitbull Gym Sleeveless Hoodie features contrast threading and our authentic "Pitbull Gym" print showcased on the front. Our soft and comfortable tri-blend fabric allows for flexibility for those extreme weight lifting sessions. Our sleeveless design keeps any bodybuilder looking and feeling pumped all day.

AVAILABLE SIZES:

M / L / XL / XXL

AVAILABLE COLORS:



# LIMITED EDITION CAMO SERIES



## CONTRAST CAMO STRINGER TANK M382-C

Our LIMITED EDITION Contrast Camo Stringer Tank Top is only available for a short amount of time. The camo accent feature emphasizes your physique and the Dri-Fit moisture wicking material will keep you dry while you break a sweat. Ironically enough, this tank will do anything but hide you and is sure to stand out!

### AVAILABLE SIZES:

M / L / XL

### AVAILABLE COLORS:



## DRI-FIT CAMO STRINGER TANK M379-C

Our DRI-FIT Camo Stringer Tank Top comes in a solid camo pattern and is part of our limited edition camo series. Constructed out of our superior Dri-Fit moisture wicking material and is sure to keep anyone cool while they feel the burn.

### AVAILABLE SIZES:

M / L / XL

### AVAILABLE COLORS:



## CAMO BOY DRI-FIT PANT M899-C

Our "Poor Boy Pant" now in our DRI-FIT Material and featuring our Limited edition camo print.

### AVAILABLE SIZES:

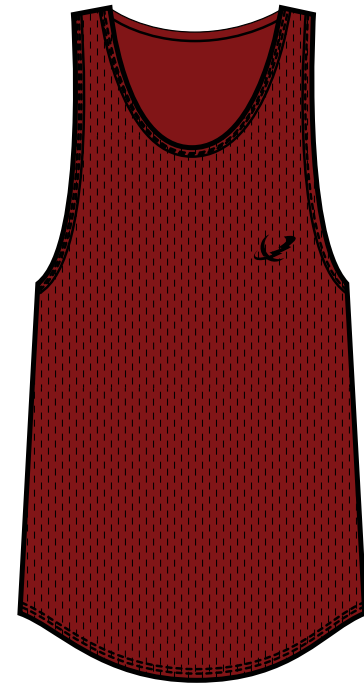
M / L / XL

### AVAILABLE COLORS:





# DRI-FIT WORK OUT WEAR



## DRI-FIT HEMMED WORKOUT TANK M385

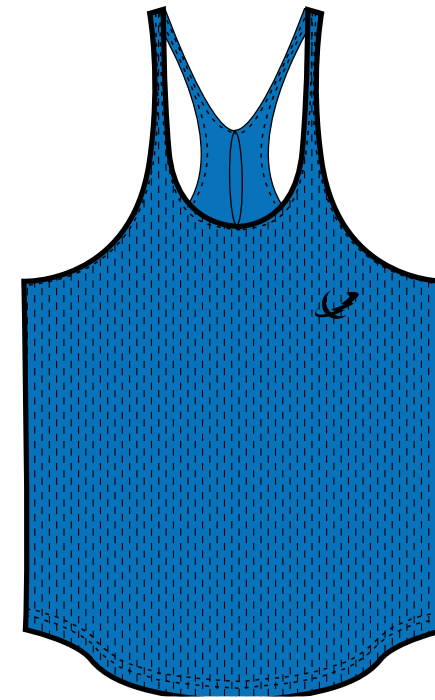
Our ultimate DRI-FIT Workout Tank for the ultimate bodybuilder, power lifter or weightlifter. Our superior Dri-Fit moisture wicking material keeps you dry while you burn and break a sweat. The signature Pitbull Clothing "Jagged Swish" logo stamped on the front ensures that you're purchasing 100% authentic Pitbull Clothing apparel that is 100% MADE IN THE USA.

- 100% Polyester
- Rounded Bottom Hem
- DRI-FIT Moisture Wicking Material
- Contrast color Pitbull Clothing "Jagged Swish" logo
- Machine Wash Cold/Hang Dry or Dry Low Heat -
- DO NOT IRON

### AVAILABLE SIZES:

M / L / XL / XXL

### AVAILABLE COLORS:



## DRI-FIT STRINGER TANK M379

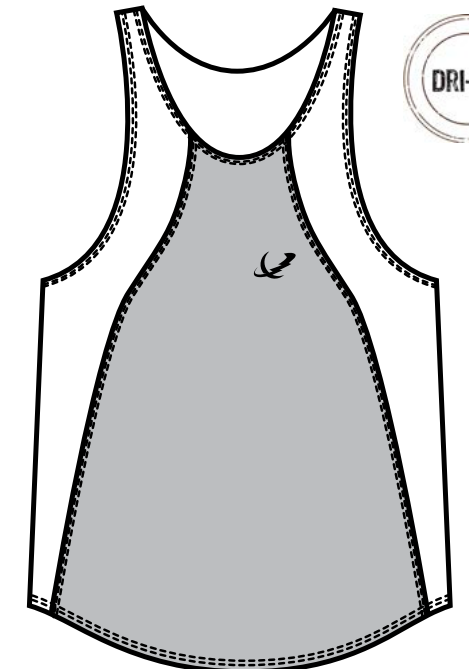
Our Dri-Fit Stringer Tank Top is for the ultimate bodybuilder, power lifter or weightlifter. Our superior Dri-Fit moisture wicking material keeps you dry while you burn and break a sweat. The signature Pitbull Clothing "Jagged Swish" logo stamped on the front ensures that you're purchasing 100% authentic Pitbull Clothing apparel that is 100% MADE IN THE USA.

- 100% Polyester
- DRI-FIT Moisture Wicking Material
- Thin Straps with Rounded Bottom Hem
- Contrast color Pitbull Clothing "Jagged Swish" logo
- Machine Wash Cold/ Hang Dry for Long Term Care or Dry Low Heat
- DO NOT IRON

### AVAILABLE SIZES:

M / L / XL

### AVAILABLE COLORS:



## DRI-FIT TWO-TONED TANK M382

Our Two Tone Dri-Fit Stringer Tank Top is a modernized version of our classic Stringer Tank Top. The two tone color blocking feature accents your physique and shows off your hard work. Our superior Dri-Fit moisture wicking material keeps you dry while you burn and break a sweat. The signature Pitbull Clothing "Jagged Swish" logo stamped on the front ensures that you're purchasing 100% authentic Pitbull Clothing apparel that is 100% MADE IN THE USA.

- 100% Polyester
- DRI-FIT Moisture Wicking Material
- Thick Straps / Rounded Bottom Hem
- Contrast color Pitbull Clothing "Jagged Swish" logo
- Hang Dry for Best Long-Term Care or Dry LOW HEAT
- DO NOT IRON ART WORK

### AVAILABLE SIZES:

M / L / XL

### AVAILABLE COLORS:



# GRAPHIC TEES



## BARBELLS T-SHIRT

**M101**

The Pitbull Gym "Barbells" T-Shirt is a classic in our collection. Created from 100% Ring Spun Cotton, this tee is a staple for any fitness fanatic, serious bodybuilder, and hard-core weightlifter. The vintage Pitbull Gym "Barbells" logo is screen printed and has an original Pitbull Clothing care label sewn inside.

AVAILABLE SIZES/

M / L / XL / XXL

AVAILABLE COLORS/



## BAD AS I WANNA BE T-SHIRT

**M104**

Our famous "Bad As I Wanna Be" T-Shirt is a classic in our collection. Created from 100% ring spun cotton, this tee is a staple for any fitness fanatic, serious bodybuilder, and hard-core weightlifter. The vintage "Bad As I Wanna Be" logo is screen printed and has an original Pitbull Clothing care label sewn inside.

AVAILABLE SIZES/

M / L / XL / XXL

AVAILABLE COLORS/



# 100% COMBED COTTON STRINGERS



M / L / XL / XXL



"CLASSIC MUSCLES" STRINGER TANK

M420



M / L / XL / XXL



"ORIGINAL MUSCLES" STRINGER TANK

M424



M / L / XL / XXL



"MADE IN THE U.S.A" STRINGER TANK

M426



M / L / XL / XXL



"MUSCLES" STRINGER TANK

M422

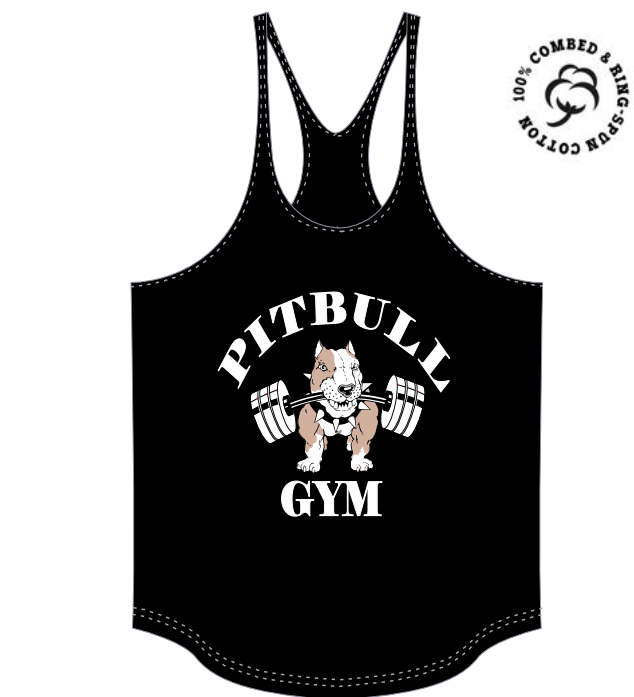


M / L / XL / XXL



"FIT 4 LIFE" STRINGER TANK

M428



M / L / XL / XXL



CLASSIC "BARBELLS" STRINGER TANK

M301



M / L / XL / XXL

"BAD AS I WANNA BE" STRINGER TANK

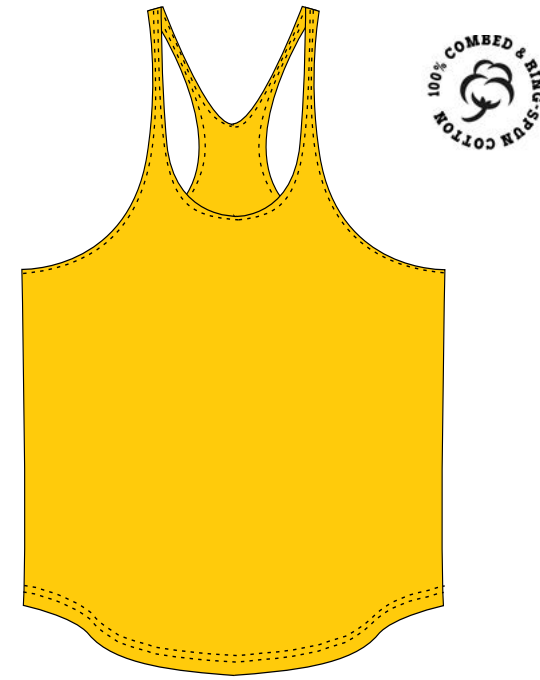
M304



M / L / XL / XXL

"BLOOD SWEAT & TEARS" THICK STRINGER

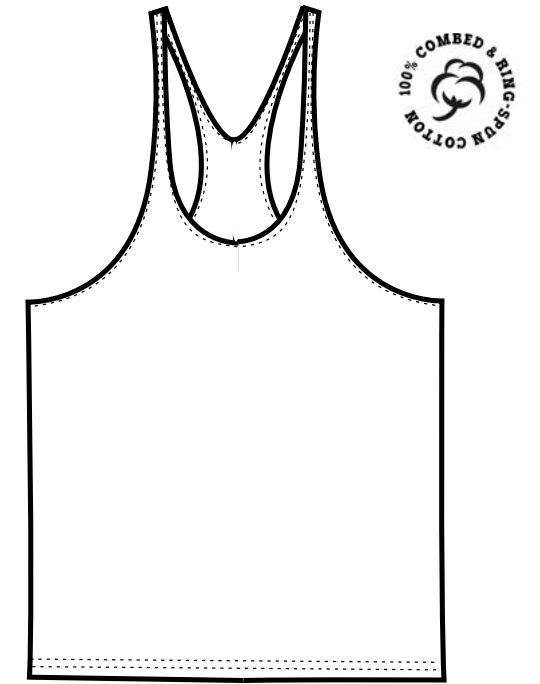
M311



M / L / XL / XXL

BLANK STRINGER TANK

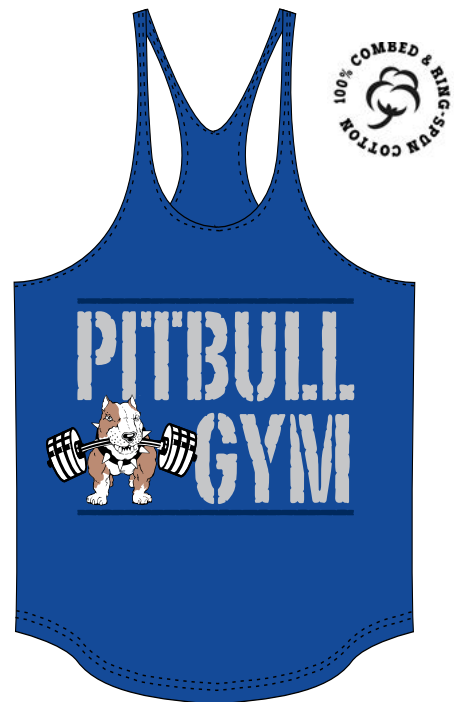
M333



M / L / XL / XXL

STRETCH COTTON STRINGER TANK

M399



M / L / XL / XXL

"PITBULL POWER" STRINGER TANK

M315



M / L / XL / XXL

"MADE IN LA" STRINGER TANK

M375



M / L / XL / XXL

CLASSIC TWO TONE BLANK STRINGER

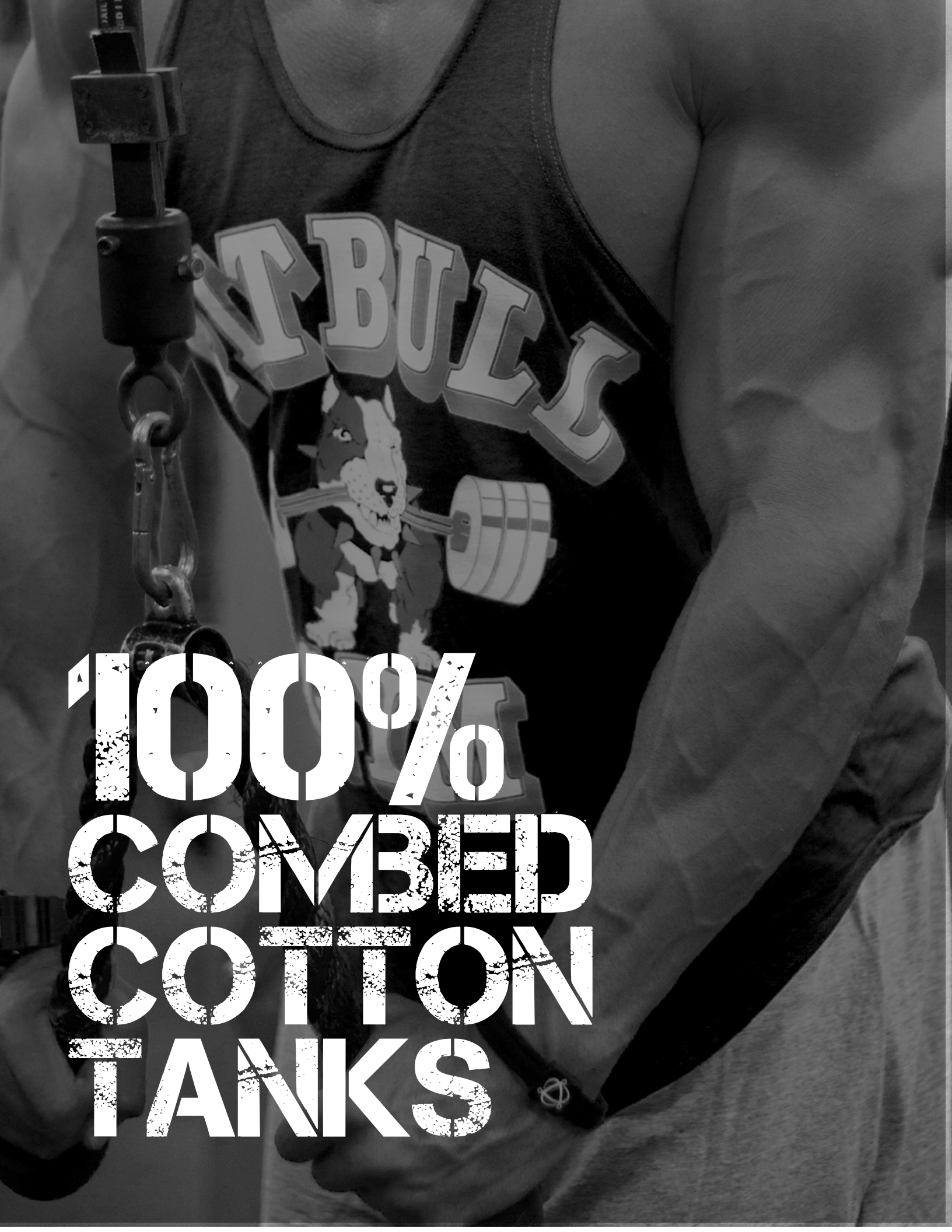
M335



M / L / XL

VINTAGE JERSEY RAGTOP

M725



**100%  
COMBED  
COTTON  
TANKS**



## **ONLY THE STRONG WORKOUT CUT TANK M305**

AVAILABLE SIZES/

M / L / XL / XXL

AVAILABLE COLORS/



## **BARBELLS WORKOUT CUT TANK M310**

AVAILABLE SIZES/

M / L / XL / XXL

AVAILABLE COLORS/



## **BAD AS I WANNA BE WORKOUT CUT TANK M350**

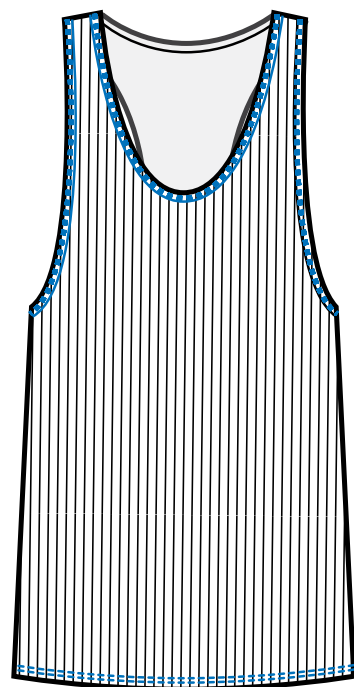
AVAILABLE SIZES/

M / L / XL / XXL

AVAILABLE COLORS/



**SUPER SOFT  
STRETCHABLE  
RIB**



## RIBBED CONTRAST COLOR TANK

**M395**

Pitbull Gym's 2 x 1 Ribbed Contrast Color Tank is a requirement for any fitness junkie. Created from 95% ring spun cotton jersey and 5% spandex, giving any athlete the ideal active staple. It features a unique contrast accent threading and has an original Pitbull Clothing care label sewn inside.

**AVAILABLE SIZES/**

M / L / XL

**AVAILABLE COLORS/**



## FITTED RIBBED LONG SLEEVE

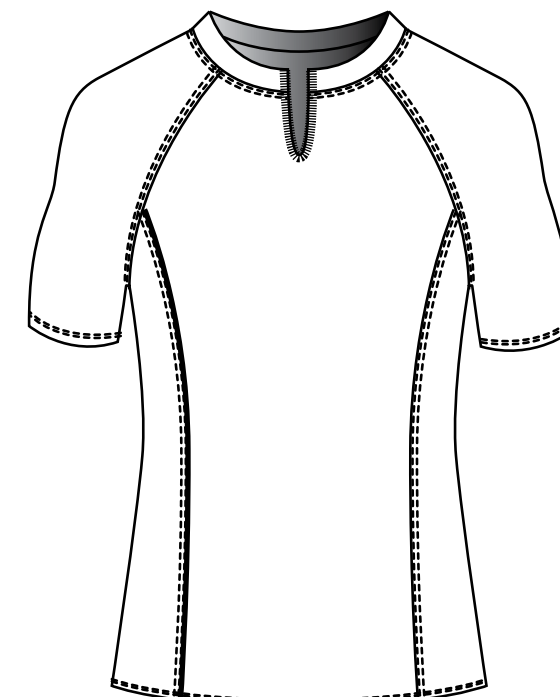
**M130**

Our Long Sleeve Fitted Ribbed Top is fitted and functional. We perfected its design for versatility during and after the workout. Created from a pure blend of 95% ring spun cotton jersey and 5% spandex. This top provides any gym enthusiast with extreme comfort and flexibility.

**AVAILABLE SIZES/**

M / L / XL / XXL

**AVAILABLE COLORS/**



## URBAN RIBBED FITTED TEE

**M123**

The Pitbull Gym Urban Ribbed Tee is perfectly fitted for any fitness fanatic, bodybuilder, and weightlifter alike. It features a unique crew neck slit and is constructed from a perfect blend of 95% ring spun cotton jersey and 5% spandex that provides you with extreme comfort and flexibility.

**AVAILABLE SIZES/**

M / L / XL

**AVAILABLE COLORS/**



# WORK OUT SHORTS

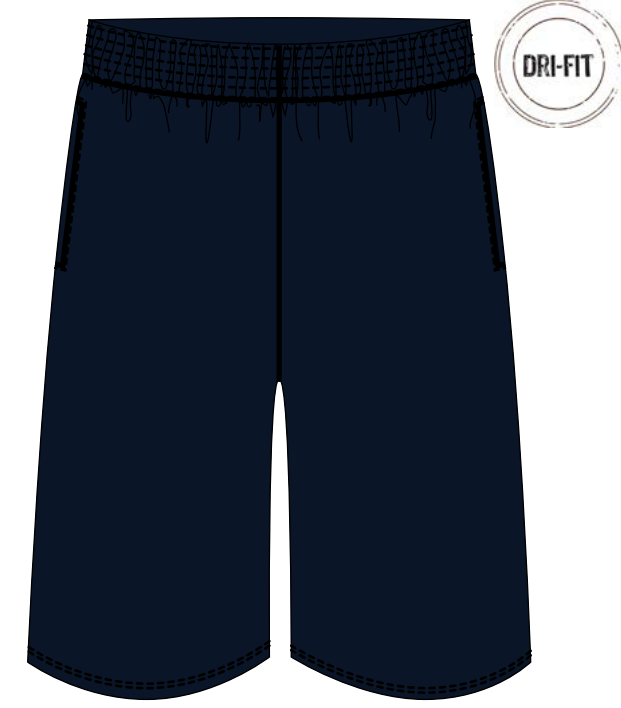


## POOR BOY POCKET SHORT M601

Our Poor Boy Pocket Shorts are loose fitting shorts designed for any work out. Features a textured pin stripe design and a two inch elastic waistband. The hidden pockets allow you to hold on to your keys or phone while training.

AVAILABLE SIZES/  
S | M | L | XL

AVAILABLE COLORS/  
[Color swatches]



## DOUBLE CROSS WORKOUT SHORT M610

The Double Cross Workout Shorts are perfect for just about any hard-hitting workout. Constructed with our exclusive Dri-Fit material with a double lined interior that adds to the durability and comfort. Featuring a stable two inch waistband and two deep slash pockets.

AVAILABLE SIZES/  
S | M | L | XL

AVAILABLE COLORS/  
[Color swatches]



## REVERSIBLE DRI-FIT SHORT M615

Our modern Reversible Workout Short features a simulated mesh design with our popular Pitbull "Swish" logo. The relaxed Dri-Fit fabric allows for easy movement and moisture protection. Each short conveniently reverses into another color making it easy to switch up your style. Black reverses into Charcoal and Navy reverses into White.

AVAILABLE SIZES/  
S | M | L | XL

AVAILABLE COLORS/  
[Color swatches]

# WORK OUT PANTS

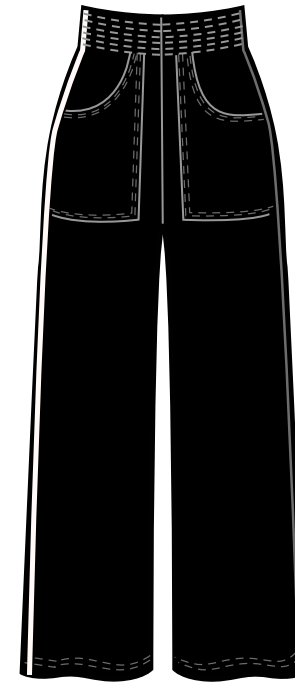


## ZIPPER POCKET SWEAT PANT

**M801**

Our Zipper Pocket Sweat Pant can be worn casually as well as to train and perform. Features double contrast piping with front zipper pockets. The soft Ring Spun Cotton is light weight and durable allowing for maximum performance.

S / M / L / XL



## JERSEY KARATE PANT

**M869**

The Jersey Karate Pant features a modern design with contrast threading along the exterior Karate pockets. The single piping along the leg adds a pop of color while the construction of the pant allows for free effortless movement while working out, running, and even kickboxing.

S / M / L / XL



## POOR BOY BAGGY PANT

**M899**

Our Poor Boy Baggy Pants offer our most comfortable fit. These pants feature a textured pin stripe design and a two inch elastic waistband. The hidden pockets allow you to hold on to your keys or phone while training. These shorts feature our famous Pitbull Clothing Label.

S / M / L / XL







## CONTACT US

[WHOLESALE@PITBULLCLOTHING.COM](mailto:WHOLESALE@PITBULLCLOTHING.COM)

[www.pitbullgym-wholesale.com](http://www.pitbullgym-wholesale.com)

1-800-524-2350