

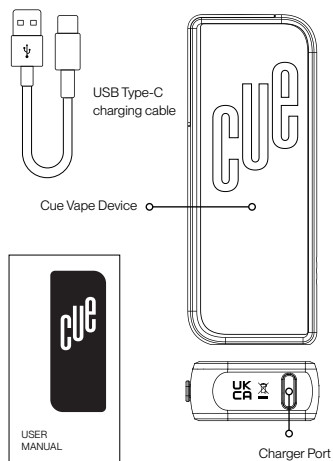


USER
MANUAL

IN THE BOX

CONTENTS

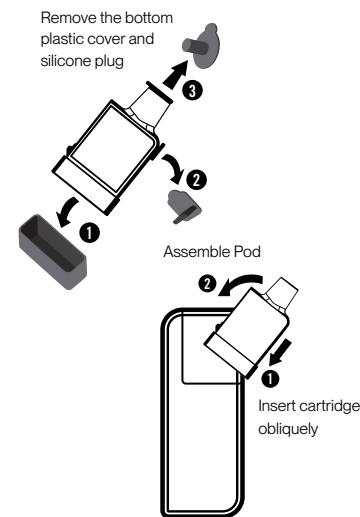
- 1x Cue Vape Device
- 1x USB type-C charging cable
- 1x User manual



SPECIFICATIONS

Dimensions	: 101.5mm x 35mm x 16mm (with pod fitted)
POD Capacity	: 2ML
Battery capacity	: 750mAh
Coil resistance	: 1.4ohm
Output Voltage	: 3.3V-4.2V
Output Wattage	: 8.2 W

INSERTING THE POD



Occasionally you may insert a pod and notice that no vapor is produced when you inhale. If this happens all 3 LED lights blink red. In this case simply remove the pod and re-insert it firmly.

DEVICE USE WARNING

Avoid contact with high temperatures, do not incinerate, do not place the device in proximity to direct sources of heat, direct exposure to sunlight, or in environments of high temperatures (above 60°C / 140°F). Contact with high temperatures will damage the battery which will cause malfunction and could result in explosion, or release of harmful substances. The lithium-ion battery will burn and/or explode if heated or incinerated.

Your Cue Vape Device is covered by our warranty. To register your Cue Vape Device and learn more about our warranty please go to www.cue-vapor.com

If you need any information or have any questions about your device, please visit www.cue-vapor.com



100 mm

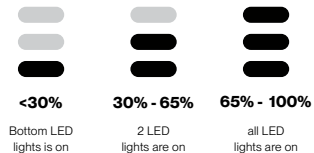
53 mm

265 mm



BATTERY INDICATOR

- When inserting a pod into the device, all LED lights will come on momentarily. They will then go off and come back on again, indicating how much your device is charged.
- During each inhalation all 3 LED lights will come on and then go off. When you stop inhaling they will come back on indicating how much your device is charged. This allows you to track the charge of your device as you use it.
- When your device is depleted, then the 3 LED lights will turn red and blink 20 times. At this time you need to charge your device again (see Charging your Cue vape device).



CHARGING YOUR CUE VAPE DEVICE

- Charge using the USB Type C cable provided in this package. Insert one end of the USB C cable into the Cue vape device charge port and the other into your electrical charge point (for instance your computer).
- When charging your device the 3 LED lights will come on and off, indicating how much your device is charged. When the bottom LED light is on permanently, the device is 30% charged. When the second LED light is on permanently then the device is 65% charged. When all 3 LED lights are on permanently, and no longer blinking, then your device is 100% charged.
- When all 3 LED lights are on permanently you should disconnect the USB C cable.
- To avoid any risk of fire, injury and/or damage to your device or other property only charge your device with the USB C cable provided.
- Never leave your Cue device unattended when it is charging.

IMPORTANT SAFETY INFORMATION

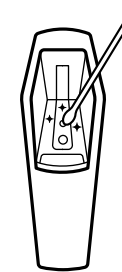
- Use your device in accordance with this User Manual.
- Do not allow your device to get wet or immerse it directly into water.
- Do not insert foreign objects into the device.
- Immediately stop use of the product and seek medical advice if you experience any of the following: development of irregular heart-beat, allergic reaction such as rash, itching or swelling of the tongue, mouth, or throat, feeling faint, nausea, headache, or any other unusual or adverse effect.

This product is not to be used by:

- Persons who have any allergies;
- Pregnant or breast-feeding women;
- Persons with unstable heart condition, severe hypertension or diabetes;
- This product contains nicotine which may produce toxic effects if consumed orally, particularly in children or infants. DO NOT consume this product. If consumed, visit your GP immediately. If the product gets on your skin, immediately rinse with cold water for 10-15 minutes;
- Nicotine products are not recommended for use by pregnant women and are contraindicated when taken in high doses in risk groups with the following: Diabetes mellitus, Gastrointestinal disease, phaeochromocytoma, moderate to severe hepatic impairment, severe renal impairment, uncontrolled hyperthyroidism, history of epilepsy, haemodynamically unstable individuals, or chronic throat disease.

CLEANING AND MAINTENANCE

The battery can be cleaned using a soft dry cloth or tissue. Care should be taken to avoid getting the battery or pod wet.



The pod connection points in the Cue vape device can be cleaned carefully using a dry cotton swab.

KEEP OUT OF REACH OF CHILDREN AND ANIMALS. THIS PRODUCT CONTAINS NICOTINE WHICH IS A HIGHLY ADDICTIVE SUBSTANCE. THIS PRODUCT MAY BE HAZARDOUS TO YOUR HEALTH. THIS PRODUCT IS NOT RECOMMENDED FOR NON-SMOKERS & YOUNG PEOPLE UNDER THE AGE OF 18.

The Cue Vape Device was designed in the UK. It is made in China.
The Cue USB C Type cable is made in China.

Imported by
Cue Vapor Limited
Hersham Place Technology Park,
Molesley Road, Walton On Thames,
Surrey, KT12 4RZ
United Kingdom
www.cue-vapor.com

100 mm

53 mm

265 mm

70 mm

USER MANUAL



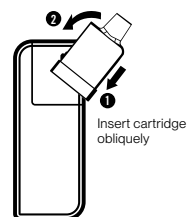
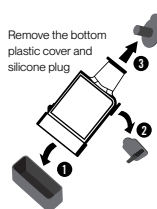
IN THE BOX

CONTENTS
2 x Cue Pods



INSERTING THE POD

Remove the bottom plastic cover and silicone plug



Occasionally you may insert a pod and notice that no vapor is produced when you inhale. If this happens all 3 LED lights blink red. In this case simply remove the pod and re-insert it firmly.

WHEN TO CHANGE YOUR POD



The pod is empty if you have little or no vapour production. When empty you will notice a deterioration of the taste or quality of the vapour.



If your Cue vape device stops producing vapour and the pod is not yet empty, check that your device is fully charged.

TIPS

- For the best experience when using your Cue vape device make sure it is fully charged before use.
- During each inhalation all 3 LED lights will come on and then go off. When you stop inhaling they will come back on indicating how much your device is charged. This allows you to track the charge of your device as you use it.
- Only use original Cue Pods with your Cue vape device.

50 mm

150 mm

70 mm



The Cue Pod was designed in the UK.
It is made in China.
The Cue e-liquids are made in the UK and European Union.
The Cue pods are filled in China.

Imported by
Cue Vapor Limited
Hersham Place Technology Park,
Molesey Road, Walton On Thames,
Surrey, KT12 4RZ
United Kingdom
www.cue-vapor.com

CUE POD DISPOSAL

Electrical and electronic goods and batteries should not be disposed of as part of your regular household waste, but should be separately collected for recovery and recycling in accordance with your national or local rules.

Device Use Warning

This product is not to be used by:
(1) Persons who have any allergies;
(2) Pregnant or breast-feeding women;
(3) Persons with unstable heart condition, severe hypertension or diabetes.

KEEP OUT OF REACH OF CHILDREN AND ANIMALS. THIS PRODUCT CONTAINS NICOTINE WHICH IS A HIGHLY ADDICTIVE SUBSTANCE. THIS PRODUCT MAY BE HAZARDOUS TO HEALTH. THIS PRODUCT IS NOT RECOMMENDED FOR NON-SMOKERS & YOUNG PEOPLE UNDER THE AGE OF 18.

Your Cue Vape Device is covered by our warranty. To register your Cue Vape Device and learn more about our warranty please go to www.cue-vapor.com

If you need any information or have any questions about this product, please visit www.cue-vapor.com

IMPORTANT SAFETY INFORMATION

- Do not allow your pod to get wet or immerse it directly into water.
- Do not insert foreign objects into the pod.
- Immediately stop use of the product and seek medical advice if you experience any of the following: development of irregular heart-beat, allergic reaction such as rash, itching or swelling of the tongue, mouth, or throat, feeling faint, nausea, headache, or any other unusual or adverse effect.
- Nicotine products are not recommended for use by pregnant women and are contraindicated when taken in high doses in risk groups with the following: Diabetes mellitus, Gastrointestinal disease, pheochromocytoma, moderate to severe hepatic impairment, severe renal impairment, uncontrolled hyperthyroidism, history of epilepsy, haemodynamically unstable individuals, or chronic throat disease.
- This product contains nicotine which may produce toxic effects if consumed orally, particularly in children or infants. DO NOT consume this product. If consumed, visit your GP immediately. If the product gets on your skin, immediately rinse with cold water for 10-15 minutes.



50 mm

150 mm