

# AMPLIFIERS

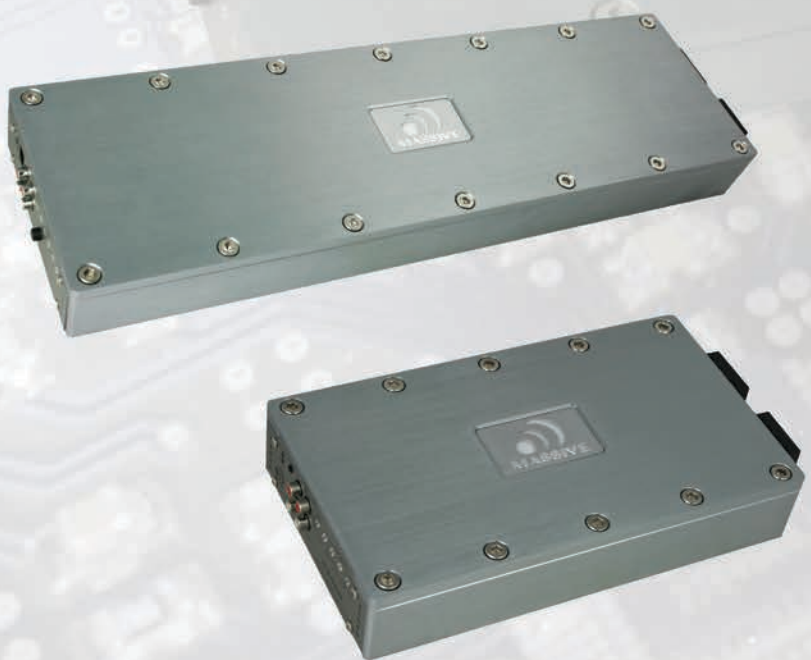
# D-BLOCK

## Mono Block & Full Range Amplifiers

- 24 dB Low Pass Crossovers with an adjustable range of 40Hz - 220Hz (Mono)
- Hi-Pass 18dB Subsonic Filter with a range of 10Hz - 50Hz. (Mono)
- 1 Band Parametric Bass Boost EQ from 30Hz - 80Hz (Mono)
- RCA link for master / slave configuration (Mono)
- LPF / FULL / HPF Crossover frequency selections (Multi CH)
- 2 CH Switch for easy RCA input configurations (Multi CH)
- Adjustable Q Control to adjust the curve of the bass boost (D 8000)
- Clip Limit Switch to control the output level at clipping point (D 8000)
- -6 ~ 12dB Bass Boost EQ from 30Hz - 120Hz (DBX4)
- X11 - X 18 Switch for HPF/LPF/BANDPASS Crossover Freq. Selections (DBX4)
- Full Digital Circuitry for Extreme Heat Protection (DBX4 )
- Hi-Level Input via RCA with Auto Sensing Music Turn-On & Remote Out (DBX4)
- Crossover Frequency Auto Matching for Channels 3/4 (DBX4)
- Optional UR1 Remote Gain Control Available



MODEL	CHANNEL	RMS	MAX	MIN Q	FREQ. RESPONSE	DIMENSIONS
DBX4	4	230Wx4	1000Wx2	20	20Hz~45KHz	2.1" x 6.5" x 9.40"
D800.4	4	120Wx4	480Wx2	20	15Hz~25KHz	2.1" x 6.5" x 10.5"
D2400	1	1200W	2400W	10	10Hz~220Hz	2.1" x 6.5" x 11.2"
D3600	1	1800W	4000W	10	10Hz~220Hz	2.1" x 6.5" x 14.8"
D8000	1	4000W	8000W	0.50	10Hz~220Hz	2.1" x 6.5" x 19.9"



The Digital Block Series Amplifiers are a staple of beauty and power at Massive Audio. These amplifiers provide significant amounts of power in a stylish and surprisingly small heat sink that allow for high class installs that are not just for show. These CTA Certified amplifiers boast Advanced Digital Power Supply Switching, Mil Spec Double Sided PCB's with SMD parts like matched MOSFET "N" Drive outputs and an advanced Six Way Protection. The Nickel Plated Connectors, 18dB Crossovers, 30Hz - Hi-Fi E-Cap Filter, Heavy Duty Power Supply, Noise Rejection Circuit, 2CH/4CH Button, are all mounted inside a beautiful brushed aluminum "finless" heat sink with a milled top plate bolted down with "hex bolts". The four cornered hex bolts unscrew to reveal mounting tubes that allows the installer to bolt down the amp for a razor clean installation. Top it off with a soft blue LED backlit logo the D-Block Series combines "Style, Form, Function and High Performance".

# THE CUTTING BLOCK