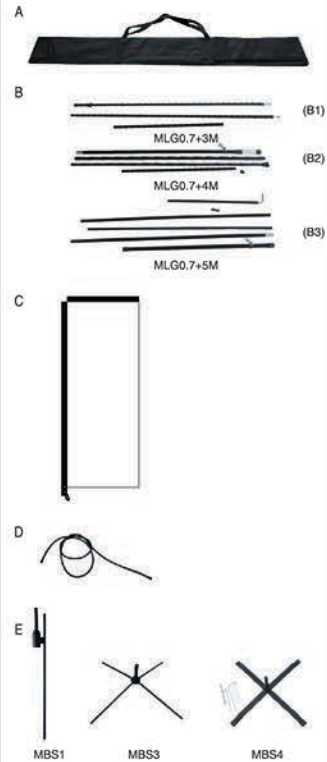


Custom Rectangular Feather Flags Assembly Instructions

Each flag kit include:

- A. Carrying bag (1)
- B. Poles(B1, B2 or B3) varies by flag size (1)
- C. Flag (1)
- D. Bungee Cord (1)
- E. Ground Spike Or Cross base (1)

Before assembly, pls confirm all items included



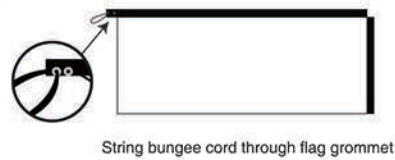
If install ground spike, you will need a hammer

1 STEP

Connect poles Arrange all poles in order from smallest to largest before assembly. Assemble by sliding the ends of each pole into the other until snug. If poles are not fitting together correctly, try the opposite end or rearrange the order of the poles.

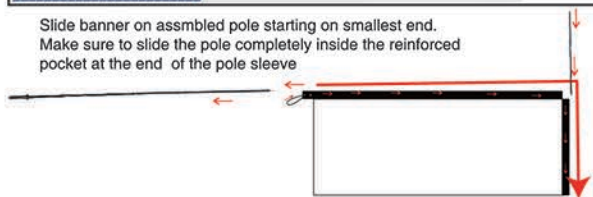


2 STEP



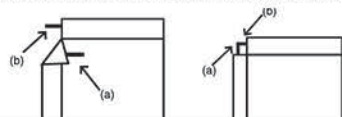
3 STEP

Slide banner on assembled pole starting on smallest end. Make sure to slide the pole completely inside the reinforced pocket at the end of the pole sleeve



4 STEP

Insert the assembled pole (a) through the long pole sleeve in the flag. Insert the smallest top pole piece (b) through the small pole sleeve at the top of the flag, and connect it to the long pole. Allow enough slack in the pole sleeve to help slide to poles together. Ensure a tight connection.



5 STEP

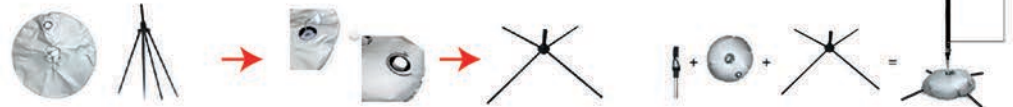
3 option to install base

A To install ground spike - MBS1

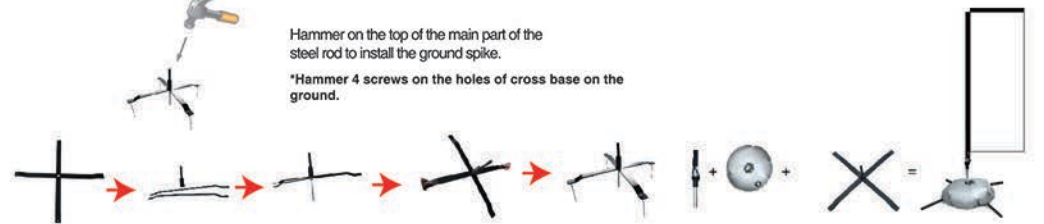
Hammer on the top of the main part of the steel rod to install the ground spike.

B To install cross base

MBS3



MBS4



Hammer on the top of the main part of the steel rod to install the ground spike.

*Hammer 4 screws on the holes of cross base on the ground.

Tips:

Hammering wrong area on ground spike will damage the ground spike!!

Always use gloves and safety glasses and exercise caution when using tools.

NOTICE

- Do not install near trees, wires, poles or buildings.
- Allow a minimum of 5ft. between banner pole and nearest object.



Inclement weather
Take your flag down during inclement weather or high winds.

