

## PG100 PROGRAMMER

**The PG100 Silencer programmer provides easy access for installers to pre-program adjustable features on alarm and remote start models.**

**To get started**, go to [www.magnadyne.com/pg100](http://www.magnadyne.com/pg100) and download the Silencer App software. Follow the instructions enclosed to install the Silencer app.

### Minimum PC Requirements

OS: Windows XP SP3 or above. Windows 7 SP1 or above. Windows 10  
CPU: Pentium 4, 3.0GHz or better  
Ram: 2GB or better

**Required Additional Software** (Install before installing the Silencer App)

### Microsoft .NET Framework 4.0 or above

**Note 1:** For Windows XP users and Windows 7 users, you may have to install or update your .NET Framework software. Go to your internet browser and Google

[dotnet.microsoft.com / download / dotnet-framework](http://dotnet.microsoft.com/download/dotnet-framework)

### Download and install the latest version.

**Note 2:** For Windows 10 users, you should not need to install/update your .NET Framework software. Windows 10 has .NET Framework ver 4.7 already installed.

### Silencer App Software Installation:

First, determine if your PC is a 32 bit or 64 bit operating system.

### Windows 7 and Windows 10 operating systems:

Right mouse click on the "My Computer" icon on your desktop and select properties.  
Under systems, look for system type.

### Windows XP (Service pack version must be 3 {SP3}):

Click start, then right mouse click My Computer and select properties to view your PC's information. If 64 bit appears in the information listing, use the 64 bit Silencer software. All other Windows XP PCs use the 32 Bit Silencer software.

### Download and install the Silencer Software:

After you have determined 32 bit or 64 bit operating system, download the appropriate software (X86 for 32 bit or X64 for 64 bit) onto your desktop or download folder. Locate the folder and double click the software icon to

start the installation. Follow the messages that appear on the screen to complete the installation.

Once the installation of the Silencer software is complete, reboot your computer.

### PG100 Driver installation:

Plug the PG100 USB socket into your computers USB port. The required UART Bridge driver should "auto-install". This process should only take a minute.

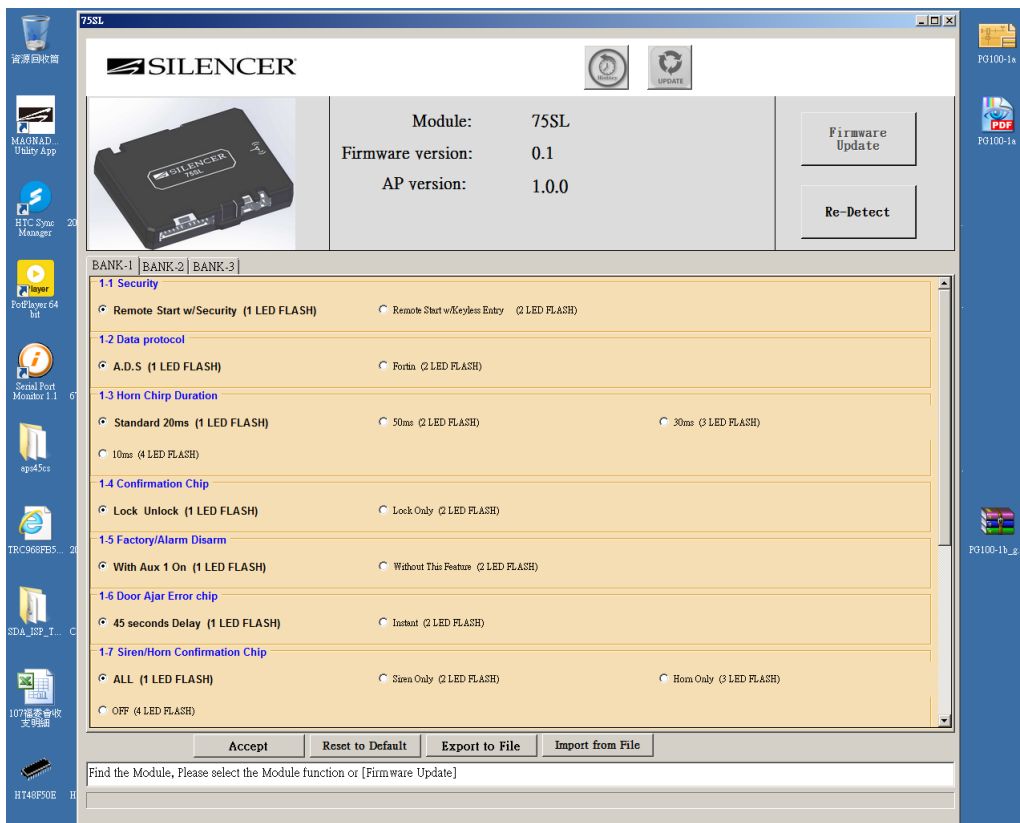
**WARNING! The PG100 only can be used before the product is installed in the vehicle and not connected to any other power source.**

### How to use the PG100 and Silencer App:

1. Connect the PG100 to your PC using the USB cable attached. Connect the 4-pin DBI harness to the Alarm / Remote start module you intend to program.
2. Startup the Silencer App. The application will open and detect the alarm product connected to the PG100.
3. You will see the feature selection screen allowing you to select / set features of the system. See example (75SL) shown on the following page. Simply move your PC's cursor over to an item you want to select / change and click the left mouse button. The highlighted area will move from the default position, to your selection.
4. Once you have made all the changes you want for the system, select "**Accept**" to have the changes take effect in the connected alarm module.

### Export To File:

If you find that your configuration is common to many vehicles, you also have the option to save the configuration file to your PC for use at a later time. Simply select "**Export to the File**", and you will be directed to name and save the preselected feature tables in a location you choose on your PC. Doing this places the .nle file on your PC where you can reuse these settings for additional units that you may be installing at a later time by selecting "**Import**", **from file**" going to the saved file and selecting it. After you have finished with your programming, saving of files, etc., simply log out of the application. Click on Re-Detect button on PC screen, it will re-detect the connected module automatically and proceed with programming and flashing firmware updates if they are available for the module you have connected.



There are 3 feature banks. You can select the features you want to change by clicking on BANK 1, BANK 2 or BANK 3. The filled in circles by each feature are the default settings. Click any unmarked circle to change the operation of that feature. When all your selections have been made, click “Accept” and the module will re-set the features.

**Note:** If there is confusion of the features and settings, select “Reset to Default” and all features will reset to their default settings.

### Alarm Module Firmware Updates:

The connected module may have a firmware update available. If the connected module shows a different firmware version than the latest shown, you have the ability to update the firmware of the connected module simply by selecting “**Firmware Update**” then select “Flash”. This will load the latest firmware version of the connected module and will display “Flash Success” once the software is loaded onto that module.

**Note:** DO NOT disconnect the module until you get the “Flash Success” message displayed on your PC’s screen.

