

Installation Instructions

Warnings

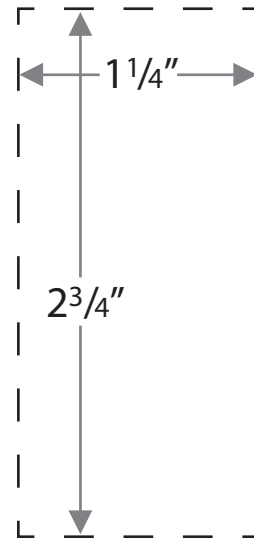
NOT FOR HOME USE OR 110V-220V APPLICATIONS

- ANY UNAUTHORIZED CHANGES OR MODIFICATIONS TO THIS EQUIPMENT MAY VOID THE USER'S AUTHORITY TO OPERATE IT.
- TO REDUCE THE RISK OF FIRE OR ELECTRIC SHOCK, DO NOT INSTALL THE UNIT IN A PLACE EXPOSED TO DIRECT SUNLIGHT OR EXCESSIVE HEAT OR HUMIDITY. AVOID PLACES WITH TOO MUCH DUST OR THE POSSIBILITY OF WATER SPLASHING OR GETTING WET.
- THIS DEVICE IS INTENDED FOR CONTINUOUS OPERATION.
- TO REDUCE THE RISK OF FIRE OR ELECTRIC SHOCK AND ANNOYING INTERFERENCE, USE ONLY THE RECOMMENDED ACCESSORIES.
- IN CERTAIN VEHICLES THE ADAPTER WILL DRAW POWER EVEN WHEN VEHICLE IS TURNED OFF AND DEPENDING ON USAGE MAY DRAIN THE VEHICLE'S BATTERY.

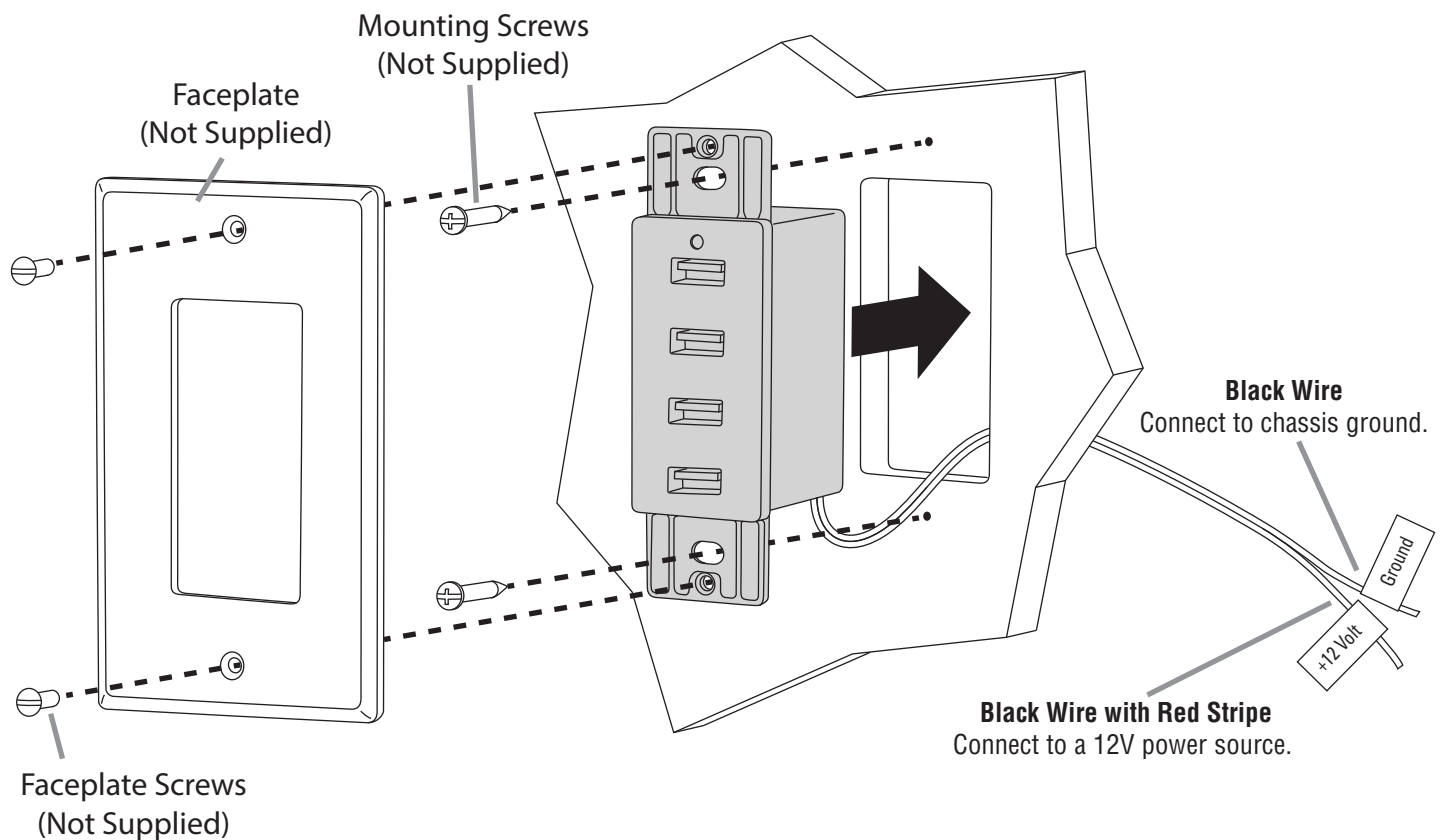
Caution

- Use the proper power supply. This product is designed for operation with a negative grounded 12V DC battery system. If the product is used with the improper system it may cause a fire or an accident.
- This product must be installed and used in accordance with this installation instructions. Any alterations to this product that enables it to be used in any way other than intended or designed could result in an accident causing injury or death. Magnadyne Corporation disclaims any and all liability that may result from failure to install and operate in any other manner in which this unit was intended.
- Do not disassemble, modify the unit or attempt to repair the product yourself. If the product needs to be repaired, consult your dealer.

Template



Installation



Operation Instructions

Introduction

The WC-USB-B/W USB Charger offers four USB charging ports which can charge four electronic devices at a time, including smart phones, tablets, cameras, e-readers and MP3 players.

Specifications:

Charging Output: 5V/2.4A per each USB port.

Wire Terminals: #16 AWG

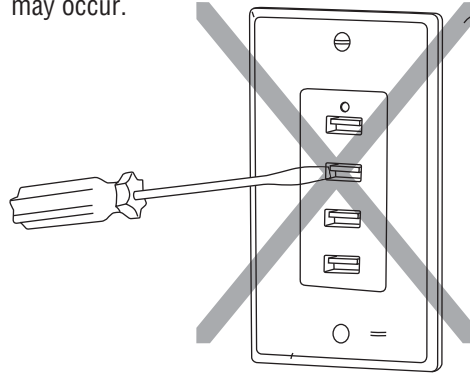
Working Temperature: 32° to 104°F (0 to 40°C)

USB Connector Compatibility: USB-A
Type 1.1/2.0/3.0 devices

Maximum Power Consumption: 48 watts

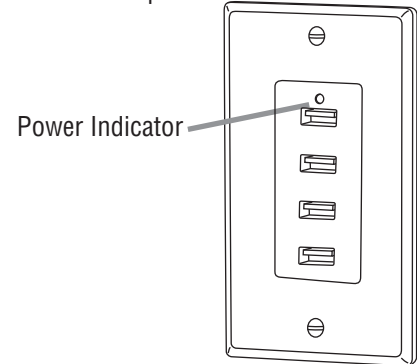
Warnings

Do not insert any metal objects into the sockets as fire or electrical shock may occur.



Power Indicator

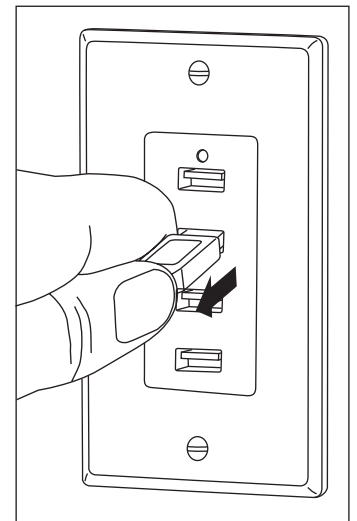
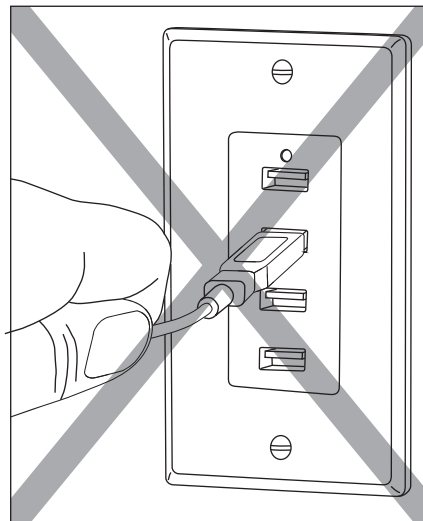
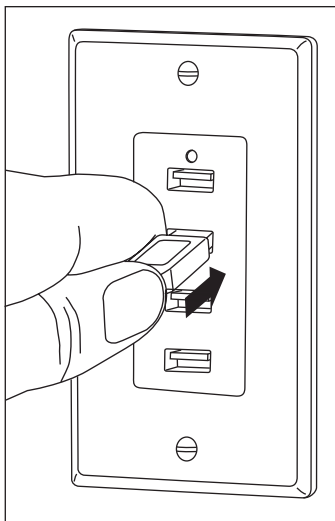
The green LED illuminates when the outlet has power.



USB Charging Ports

USB Charging:

USB ports are capable of charging at 2.4A simultaneously. Charge most USB powered devices: i-series devices, smart phones, Mp3 players and USB powered devices.



Inserting a USB Cable:

Gently insert the USB drive into the slot.

Note 1: If a USB connector does not insert, **DO NOT FORCE** it into the slot, flip the connector over and try again.

Removing a USB Cable:

Pull the USB connector straight out of the socket. Do not pull the USB's cable to remove the USB connector from its socket. Damage may occur.