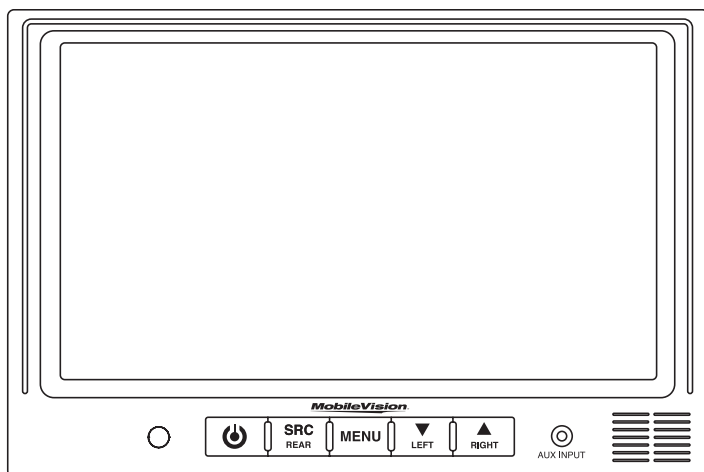


MobileVisionTM

Owner's/Installation Manual



7" Color LCD Monitor

Model: M130C

For Technical Assistance, please call (800) 638-3600,
or visit www.magnadyne.com

Table of Contents

Introduction	2
Warning / Caution	2
Monitor Features and Controls	3
Remote Control Functions	4
General Operation	4-5
Front Panel Video Input	6
Wiring Diagrams	7-8
Installation Instructions	9-10
Maintenance.....	11
Trouble Shooting	11
Warranty	12

Introduction

Congratulations on the purchase of a quality MobileVision 7" LCD Monitor. This system has been designed to provide years of trouble-free operation.

The information enclosed provides a quick reference of the operations and maintenance of the new monitor.

This product must be installed and used in accordance with this manual. Any alterations to this product that enables it to be used in any way other than intended or designed could distract the driver and result in an accident causing injury or death. Magnadyne Corporation disclaims any and all liability that may result from failure to install and operate in any other manner in which this was intended.

Warning

Backing Up Your Vehicle

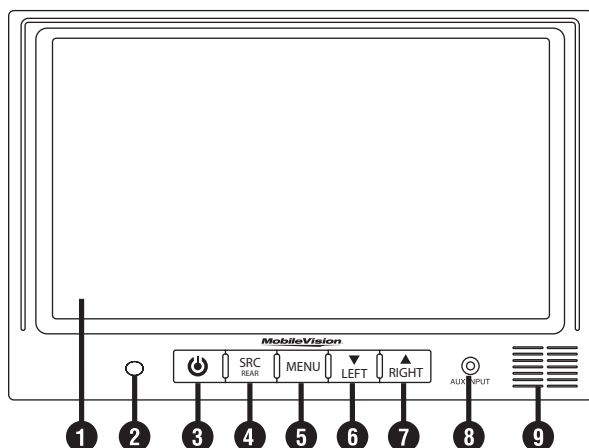
Do not backup your vehicle while looking at the monitor. Always look in the direction of your vehicle's motion. Use the monitor only as an aid in safety confirmation. The actual distance may be different than it appears in the monitor. The range of the image in the monitor is limited. Always be aware that blind spots may exist and not appear at all times on your monitor.

The product is intended to assist in safe driving and allows the driver to have a broader field of vision during backup. You, as the driver, are solely responsible for the safe operation of your vehicle and the safety of your passengers and pedestrians, and for abiding of all state and local traffic regulations. Do not use any features of this system to the extent it distracts you from safe driving. Your first priority while driving should always be the safe operation of your vehicle. MobileVision will not accept any responsibility whatsoever for accidents and/or injuries resulting from failure to observe these precautions or safety instructions.

Caution

- FCC REGULATIONS STATE THAT ANY UNAUTHORIZED CHANGES OR MODIFICATIONS TO THIS EQUIPMENT MAY VOID THE USER'S AUTHORITY TO OPERATE IT.
- TO REDUCE THE RISK OF FIRE OR ELECTRIC SHOCK, DO NOT EXPOSE THIS EQUIPMENT TO RAIN OR MOISTURE.
- THIS DEVICE IS INTENDED FOR CONTINUOUS OPERATION.
- TO REDUCE THE RISK OF FIRE OR ELECTRIC SHOCK AND ANNOYING INTERFERENCE, USE ONLY THE RECOMMENDED ACCESSORIES.

Monitor Features and Controls



1. LCD Screen

2. IR Sensor: Receives signal from the remote control.

3. Power Button (⏻): Press this button to turn the unit “On” or “Off”.

Note: The ignition key must be in the “On” position.

4. Source (SRC): Press this button to select a video source (AUX, LEFT CAM, RIGHT CAM and REAR CAM).

Note 1: When the left turn signal is activated, LEFT CAM (left side view camera) is selected automatically.

Note 2: When the right turn signal is activated, RIGHT CAM (right side view camera) is selected automatically.

Note 3: When the vehicle is put into reverse, REAR CAM (rearview camera) is selected automatically.

Note 4: When in reverse, you can use the **LEFT** or **RIGHT** button to select the left and right side cameras as needed.

5. Menu Button (MENU): Press this button to select a desired menu screen.

6. Volume Down / Menu Item Adjustment Button:

Press this button to decrease the monitor's volume.

Note: When the menu is displayed, press this button to adjust the selected menu item.

7. Volume Up / Menu Item Adjustment Button:

Press this button to increase the monitor's volume.

Note: When the menu is displayed, press this button to adjust the selected menu item.

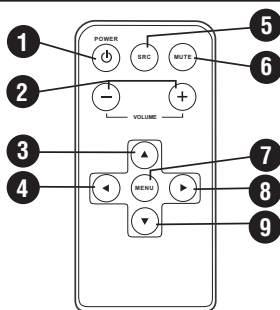
8. Auxiliary Audio/Video Jack:

Accepts 1 video and 1 audio (mono) input. Optional HAR-M130-AUX cable required.

9. Speaker The speaker is automatically activated.

Note: The rear camera must have a built-in microphone for proper operation.

Remote Control Functions



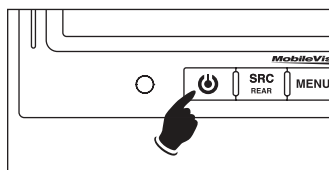
1. **Power (⏻):** Press this button to turn the unit "On" or "Off".
2. **Volume \pm :** Press these buttons to increase or decrease volume level.
3. **Up Arrow:** Press this button to move through the functions in the menu.
4. **Left Arrow:** Press this button to adjust menu functions or to decrease the adjustments for the monitor's picture.
5. **Source:** This model is a 5 source monitor. Press this button to select a video source (AUX, LEFT CAM, RIGHT CAM and REAR CAM).
6. **Mute:** Push to "Mute" the speaker.
7. **MENU:** Press this button to select a desired menu.
8. **Right Arrow:** Press this button to adjust menu functions or to increase the adjustments for the monitor's picture.
9. **Down Arrow:** Press this button to move through the functions in the menu.

General Operation

Turning the Monitor On:

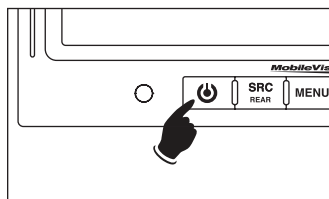
The monitor is operational by activating the ignition key then manually pressing the power switch on the unit.

Note: If the ignition key is turned off while the unit is on, the monitor will automatically become operational the next time the ignition key is turned on.



Dimming the Monitor

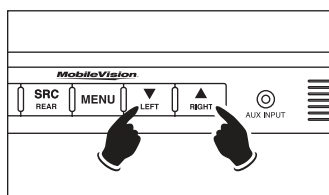
Press and hold the power button for 3 seconds to manually toggle between the daytime and nighttime view for the screen.



Adjusting the Volume

Press the volume down/up buttons ∇/\blacktriangle on the monitor to adjust the volume level of the front speaker.

Note: To adjust the volume during backup mode, push the **MENU** button, then select **AUDIO**. Use the ∇/\blacktriangle buttons to control the volume level.



General Operation (continued)

Selecting a Camera View or Input Source to Monitor:

Camera View:

Select any camera view by pressing the **SRC** button.

AUX, A/V Input (Front and Rear Panel Input): (Optional HAR-M130-AUX harness required.)

Manually select the audio/video input by pressing the **SRC** button on the monitor until **AUX** appears in the display. The AUX input is shared between the rear RCA input and the front monitor A/V input. If a product is plugged into the front input, it will override the rear A/V input as long as the 3.5 jack is plugged in.

Automatically Activating a Camera View:

Left Side Camera:

The left side view camera (LEFT CAM) is designed to automatically turn on whenever the vehicle's left turn signal is activated.

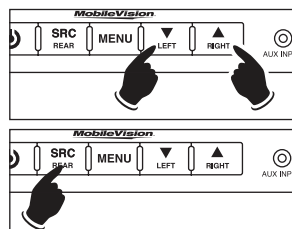
Right Side Camera:

The right side view camera (RIGHT CAM) is designed to automatically turn on whenever the vehicle's right turn signal is activated.

Rearview Camera:

The rearview camera (REAR CAM) is designed to automatically turn on whenever the vehicle is placed into the reverse gear.

Note: With the vehicle still placed in reverse, you can switch the camera view from the rear to either the left or right by pressing the **LEFT** or **RIGHT** button. To return to the rear camera view press the **REAR** button. The selected camera view will remain until either the vehicle is taken out of reverse or another camera view is selected.

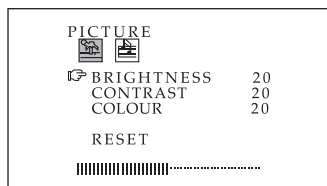


Monitor Adjustment

The monitor has two menus: **PICTURE** and **VOLUME**. To access the PICTURE adjustments menu, press the **MENU** button. To access the Volume Adjustment, press the **MENU** button a second time.

Picture Adjustments Menu

Press the **MENU** button on either the monitor's front panel or remote control until the **PICTURE** adjustments menu screen is displayed. Repeatedly press the **SRC** button to scroll through the menu items: **BRIGHTNESS**, **CONTRAST**, **COLOUR** and **RESET**. Once the desired item is highlighted, use the volume buttons to make adjustments.



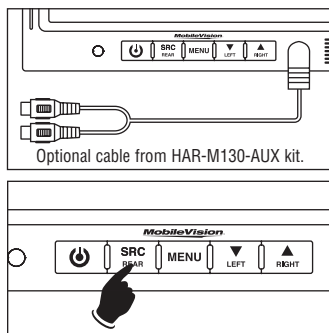
Note: You can use the navigation (up ▲ or down ▼) buttons on the remote to scroll through menu.

Front Panel Video Input (optional)

Front Auxiliary Audio/Video Input

You can connect the audio/video output signal of a digital camera, camcorder or video device. Select the auxiliary audio/video input mode by pressing the **SRC** button on the monitor until AUX 1 appears in the display.

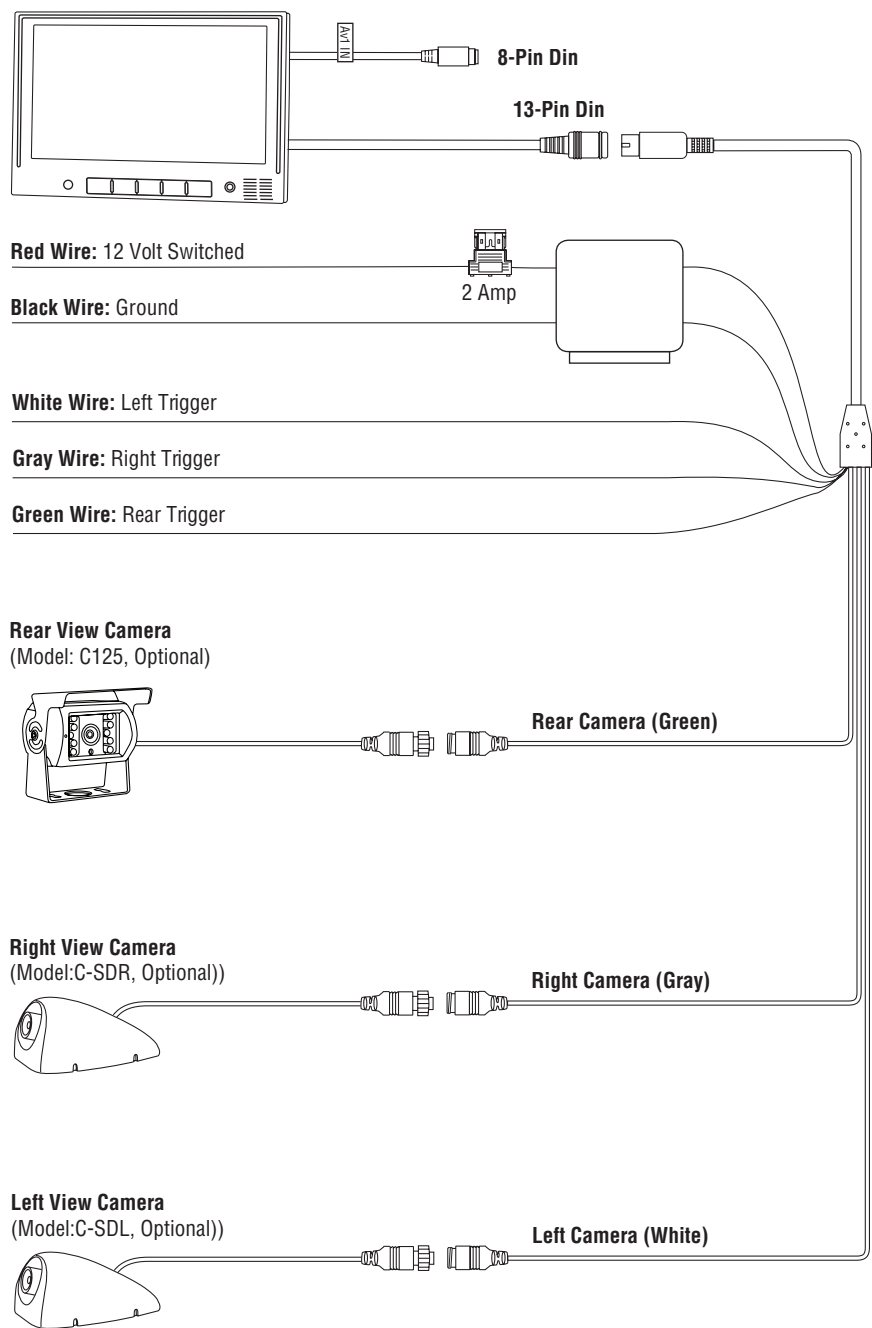
Note: The front input will override the rear auxiliary A/V input for the duration the plug is inserted into the front input jack. Optional HAR-M130-AUX cable required.



Technical Specifications

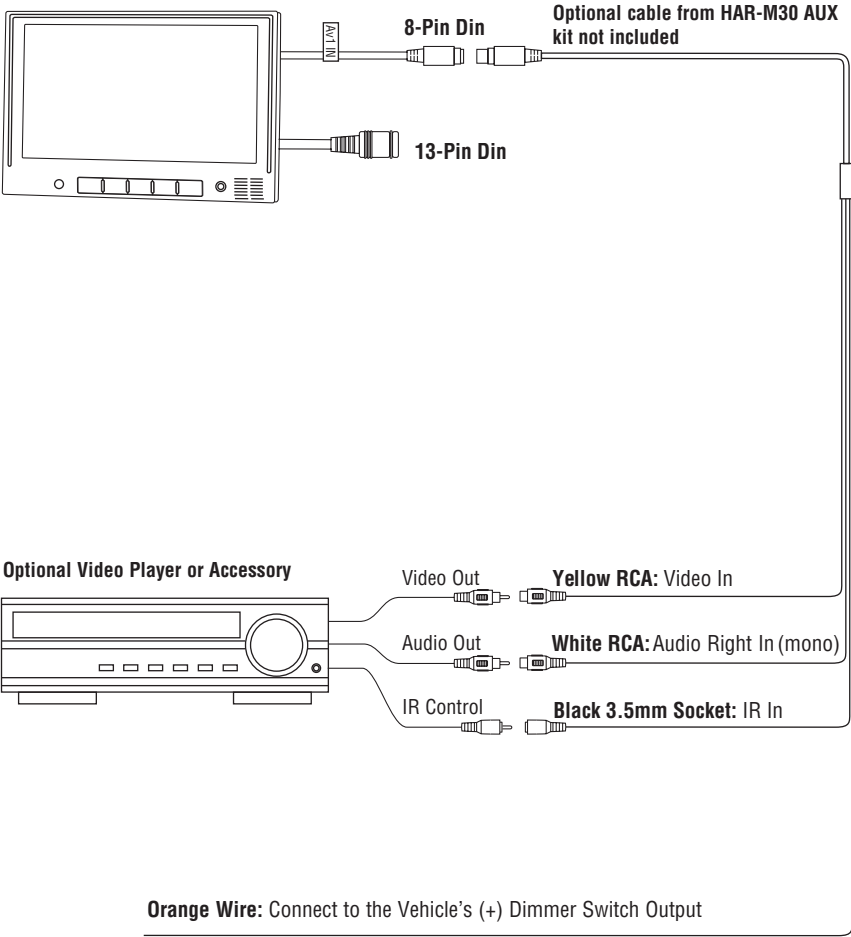
- 7" TFT-LCD color monitor
- Audio output: 1 watt
- Front speaker
- Power supply: automobile storage battery (8-16VDC)
- Power consumption: about 10 watts
- Outer dimension:
 - Without Flush Mount
182mm (W) x 122mm (H) x 26mm (D)
 - With Flush Mount
198mm (W) x 138mm (H) x 31mm (D)
- Dot pitch: 0.321 (W) x 0.372 (H)
- Resolution: 480 x 3 (RGB) x 234
- Contrast: 250:1
- Brightness: 450cd/m²
- Viewing angle: U: 30 / D: 60, R/L: 60
- Operating temperature: -20 ~ +70° C, RH90%
- Storage temperature: -30 ~ +80° C, RH90%

Wiring Diagram



Wiring Diagram (continued)

Optional:

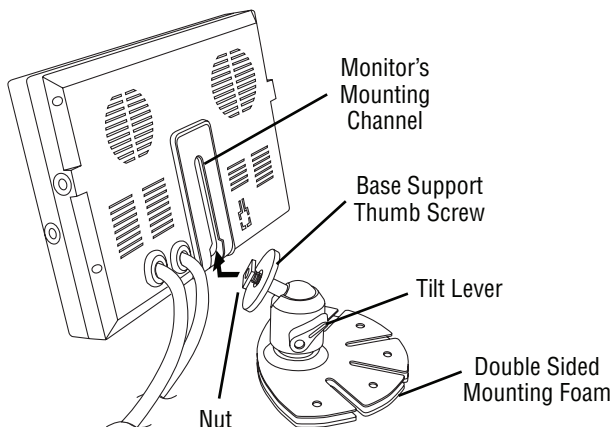


Installation Instructions

The monitor can be mounted via a pedestal-mount, U-support bracket or a flush-mount.

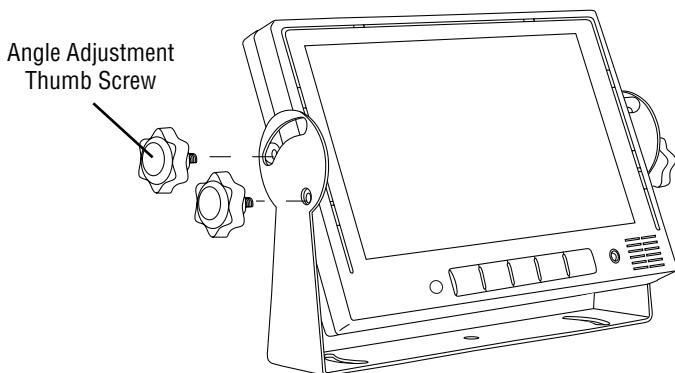
Pedestal Mounting the Monitor

1. Loosen the thumb wheel on the base support so the nut attached to the thumb wheel can slide into the monitor's mounting channel.
2. Slide the thumb wheel nut into the channel on the back of the monitor.
3. Position the monitor to the desired height and tighten the base support thumb wheel.
4. Adjust the tilt lever.
5. Use the double-sided foam (supplied) or mounting screws (not supplied) to secure the base support to the desired location.



U-Support Mounting the Monitor

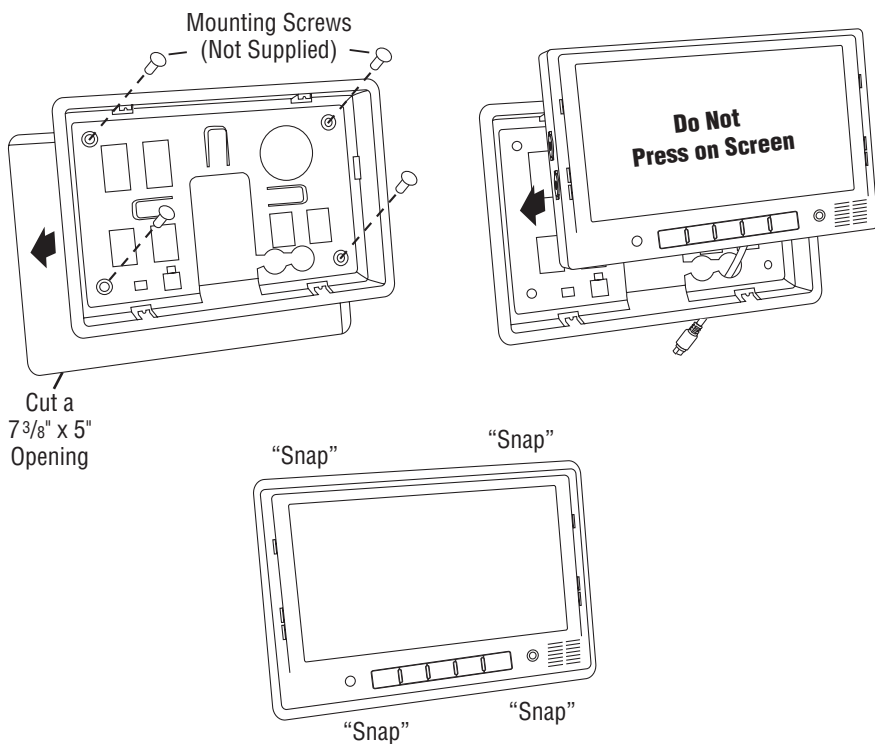
1. Select a position to mount the monitor that is free of obstructions and moving parts and has a proper viewing angle.
2. Remove the mounting bracket from the monitor and use it as a template to drill the mounting holes.
3. Position the monitor mounting bracket and align with pre-drilled holes, then secure bracket with screws (not supplied).
4. Secure the monitor to the mounting bracket using adjustment thumb screws.



Installation Instructions

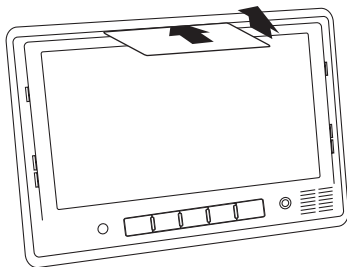
Flush Mounting the Monitor

1. Locate a suitable location for mounting the monitor (In-Dash, In-Wall, Headrest, etc.). Then cut a 7-3/8" (W) x 5" (H) opening and insert and secure the flush-mount housing.
2. After securing the housing, insert the monitor into the housing. **Do Not Apply Pressure Directly to the LCD Monitor's Screen.** Utilize the outer edges to gently push the monitor into the housing until it snaps into place.



Removing the Flush Mounted Monitor

1. Insert the detaching piece as indicated. Press in and lift up and the monitor will be released from the flush mount.
2. Remove the monitor.



Maintenance

Although this monitor requires little care, you can still maintain its condition and performance by following these steps:

- Keep the system away from excessive moisture, extreme heat or cold, and magnetic fields.
- Occasionally clean the monitor screen with a damp soft cloth.

Should you experience any problem with the system please refer to the troubleshooting guide prior to returning your system for repair.

Note 1: The user should not attempt to service the unit beyond that described in the operating instructions. All other servicing should be referred to qualified personnel.

Note 2: Do not expose the unit to water or excessive moisture. This could cause electrical shorts, fire or other damage.

Troubleshooting

Only qualified personnel should remove the cover or service this unit. The warranty will become invalid if factory security seal is broken.

Symptoms	Solutions
Unstable Image	<ul style="list-style-type: none">• Low-Voltage – Check Battery• Check Generator• If the systems is wireless move vehicle to another location, as the problem may be caused by outside interference.
Cloudy Image	<ul style="list-style-type: none">• Clean Dirty Camera Lens• Clean Dirty Monitor Lens• Adjust Contrast• Adjust Brightness
No Power/Picture	<ul style="list-style-type: none">• Check Fuses• Check if AV Cable is Properly Connected to Monitor
No Sound	<ul style="list-style-type: none">• Check Volume Level and Audio Connection
No Color	<ul style="list-style-type: none">• Check Color Level Settings
Monitor Does Not Display Image When Vehicle is in Reverse	<ul style="list-style-type: none">• Check the Green Reverse Trigger Wire for Proper 12 Volt Connection.• Check Video Inputs to Ensure they are Properly Connected

ONE (1) YEAR LIMITED WARRANTY

Magnadyne Corporation or its authorized agents will within one year from the date of sale to you, repair, replace or refund the retail sales price of said product or any part thereof, at the option of the Magnadyne Corporation or its authorized agents, if said product or part is found defective in materials or workmanship, when properly connected and operating on the correct power requirements designated for the specific product. This warranty and Magnadyne Corporation or its authorized agent's obligations hereunder do not apply where the product was; damaged while in the possession of the consumer, subjected to unreasonable or unintended use, not reasonably maintained, utilized in commercial or industrial operations, or serviced by anyone other than Magnadyne Corporation or its authorized agents, or where the warning seal on the product is broken or the power and/or plugs are detached from the unit. Magnadyne Corporation or any of its authorized agents will not assume any labor costs for the removal and reinstallation of any product found to be defective, or the cost of transportation to Magnadyne Corporation or its authorized agents. Such cost are the sole responsibility of the purchaser.

This warranty does not cover the cabinet appearance items or accessories used in connection with this product, or any damage to recording or recording tape, or any damage to the products resulting from improper installation, alteration, accident, misuse, abuse or acts of nature.

MAGNADYNE CORPORATION OR ITS AUTHORIZED AGENTS SHALL NOT BE LIABLE TO ANYONE FOR CONSEQUENTIAL OR INCIDENTAL DAMAGES OR CLAIMS EXCEPT THOSE ACCORDED BY LAW. NO EXPRESSED WARRANTY OR IMPLIED WARRANTY IS GIVEN EXCEPT THOSE SET FORTH HEREIN. NO IMPLIED WARRANTY SHALL EXTEND BEYOND ONE YEAR FROM THE DATE OF SALE.

This warranty extends only to the original purchaser of the product and is not transferable. Some states do not allow limitations on how long an implied warranty lasts, and some states do not allow the exclusion or limitation of incidental or consequential damages, so the above limitations or exclusion may not apply to you. This warranty gives you specific legal rights, and you may have other rights that vary from state to state.

“NOTE: The manufacturer is not responsible for any radio or TV interference caused by unauthorized modifications to this equipment. Such modifications could void the User's authority to operate the equipment.”

Defective merchandise should be returned to the original point of purchase or secondly, to Magnadyne Corporation, 1111 W. Victoria Street, Compton CA 90220. Return Authorization must be obtained before sending, or merchandise may be refused.