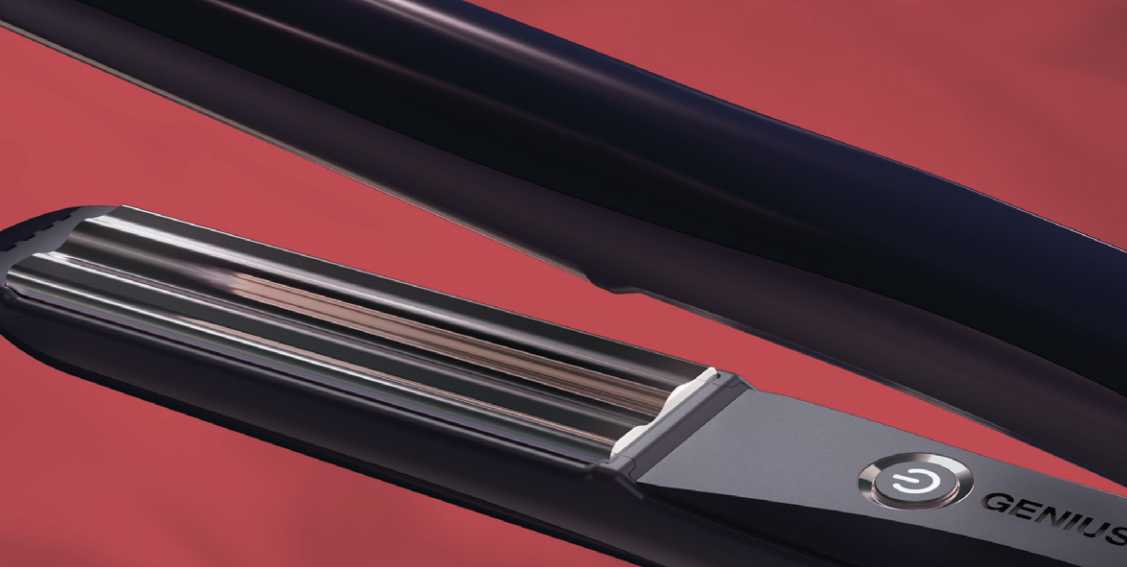


INSTRUCTION MANUAL

KEEEO

GENIUS Smart-Glide Straightener



CONTENTS

KEEO

- Important Safety Instructions 3-4
- Care & Maintenance 5
- Operating Instructions 6-8
- Warranty / Correct disposal 8-9

Please read the entire instruction manual before using the product and save it for future reference. We reserve the right for any errors in text or images and any necessary changes made to technical data. If you have any questions regarding technical problems please contact our customer services.

Model	MCMK1.
Brand	KEEO
Voltage	100-240 V~, 50-60Hz
Power	30W
Manufactured in South Korea	
keehair.com	

IMPORTANT SAFETY INSTRUCTIONS

KEEO

Please read the safety instructions carefully before you begin using your Hair Straightener. When using an electrical appliance, especially when children are present, basic safety precautions should always be followed, including the following:

KEEP AWAY FROM WATER

DANGER As with most electrical appliances, electrical parts are electrically live even when the switch is off. To reduce the risk of death by electric shock :

- Always unplug it immediately after using
- Do not use while bathing.
- Do not place or store appliance where it can fall or be pulled into a tub or sink.
- Do not place in or drop into water or other liquid.
- If an appliance falls into water, unplug it immediately. Do not reach into the water.

WARNING! THIS HAIR STRAIGHTENER IS LIVE UNTIL THE POWER IS DISCONNECTED AT THE MAINS. TO AVOID RISK OF ELECTRIC SHOCK:



WARNING Do not use this appliance near bathtubs, showers, basins or other vessels containing water.



This symbol (double isolation) on the appliance means that it is isolated and protected against contact with any live parts.

- An appliance should never be left unattended when plugged in.
- Close supervision is necessary when this appliance is used by, on, or near children or individuals with certain disabilities.
- Use this appliance only for its intended use as described in this manual.
- Do not use attachments not recommended by the manufacturer.
- Never operate this appliance if it has a damaged cord or plug, if it is not working properly, or if it has been dropped, damaged, or dropped into water. Return the appliance to a service centre for examination and repair.

- Keep the cord away from heated surfaces. Do not wrap the cord around the appliance.
- Never use while sleeping.
- Do not use outdoors or operate where aerosol (spray) products are being used or where oxygen is being administered.
- Do not use an extension cord with this appliance.
- This hair straightening iron and enclosure are hot when in use. Do not let eyes and bare skin touch heated surfaces.
- Do not place the heated hair straightening iron directly on any surface while it is hot or plugged in.
- When the appliance is used in a bathroom, unplug it after use since the proximity of water presents a hazard even when the appliance is switched off
- For additional protection, the installation of a residual current device (RCD) having a rated residual operating current not exceeding 30 mA is advisable in the electrical circuit supplying the bathroom. Ask your installer for advice.
- This appliance is not intended for use by persons (including

children) with reduced physical, sensory or mental capabilities, or lack of experience and knowledge, unless they have been given supervision and instruction concerning use of the appliance by a person responsible for their safety.

- Children should be supervised to ensure that they do not play with the appliance.
- This appliance can be used by children aged from 8 years and above and persons with reduced physical, sensory or mental capabilities or lack of experience and knowledge if they have been given supervision or instruction concerning use of the appliance in safe way and understand the hazards involved.
- Cleaning and user maintenance shall not be made by children without supervision.
- Burn hazard. Keep appliance out of reach from young children, particularly during use and cool down.
- When the appliance is connected to the power supply, never leave it unattended.
- Always place the appliance with the stand, if any, on a heat-

CARE AND MAINTENANCE

resistant, stable flat surface.

- If the supply cord is damaged, it must be replaced by the manufacturer, its service agent or similarly qualified persons in order to avoid a hazard.

STORAGE

Unplug device immediately after use. Let it cool down before it is stored. Keep device in safe place and out of reach for children.

Ensure the device is completely dry, switched off and unplugged from the wall unit before storage. Store in original box in a cool, dry place.

Store in a safe place, away from children.

REPAIRING THE DEVICE

Do not attempt to repair, disassemble or modify the device. You may injure yourself as a result of fire, or abnormal operation.

If the cord or plug of the device is damaged, discontinue use immediately. Bring the damaged device to the nearest authorized retailer for replacement.

BE KIND TO YOUR KEEO GENIUS - CLEANING & MAINTENANCE

- **Clean your plates regularly.** Due to our unique profile titanium plates, you may notice residue build-up caused by styling products. This is perfectly normal. To get the plates back to their shining glory, switch off and wait until fully cool. Lightly dampen a cotton pad or microfibre cloth with Micellar Water and clean gently. For more stubborn residues, wipe sparingly with rubbing alcohol, taking care to avoid getting on the outer casing.
- **To protect your cable,** do not wrap tightly around your styler. Instead, fold into gentle loops the length of your styler and secure with the Velcro strip near the plug.
- **When travelling,** we recommend wrapping a protective heat mat around KEEO Genius or placing into a heat protectant bag.

CAUTIONS: The device must be unplugged and fully cool before cleaning. Dry thoroughly before use. Do not use any harsh detergents, abrasives, solvents or cleaners. Do not use pan scourers as these will scratch the titanium coating. Never immerse in water to clean.

OPERATING INSTRUCTIONS

1. Swivel cord
2. On/Off button
3. Curved barrel
4. Smart glide technology plate



PRODUCT FEATURES

- Advanced floating contoured titanium plates with Smart-Glide technology suitable for all hair types
- Advanced Smart Ceramic Heater for consistent heat & results
- Heats up fast in under 20 seconds and heat is evenly distributed
- 190 °C degree automatic heat setting
- Automatic Shut-Off function after 35 minutes of inactivity
- 2.7meter power cord / 360° Swivel
- 12-month warranty
- Universal voltage

KEEO

OPERATING INSTRUCTIONS

BEFORE USE

Hair should be clean, totally dry and tangle free before using the straightener. Plug the device into a suitable wall unit. Ensure the voltage being used is the correct voltage for this straightener.

NO NEED FOR TEMPERATURE SETTING

The plate temperature is set and maintained at an optimal 190°C for all hair types and for long-lasting styles.

SLEEP MODE

If the hair straighteners have not been used for 35 minutes, the heaters turn off and the hair straighteners go into sleep mode. However, they remain connected to the power supply and are not actually switched off. They will continue to emit a warning beep every 20 seconds to indicate that they are in sleep mode. Always turn the hair straighteners off completely after use using the on/off switch.

OPERATING THE KEEO™ GENIUS SMART-GLIDE

IMPORTANT: THIS HAIR STRAIGHTENING IRON IS DESIGNED FOR 100-240 V~, 50-60Hz OPERATION ONLY.

DO NOT USE WITH OTHER POWER SUPPLIES.

1. Plug the mains lead into an electrical outlet (with dry hands).
2. Press the ON/OFF LED light switch until the light comes on.
3. When the white LED comes on the styler will emit 1 beep.
4. Hold the styler or lay it on a heat-proof surface until the LED stops blinking indicating the appliance has reached the desired temperature.
5. When the desired temperature is reached the LED will remain on and the Styler will emit 2 beeps.
6. Be careful to avoid touching your hands or scalp with the hot plates.
7. When styling, make sure that the titanium plates are in motion the entire time and that they don't remain still in one place.
8. When you have finished, Depress the ON/OFF LED switch until the light is off, turn off the power switch and unplug it.
9. Let the styler cool down completely before storing it away.

WARNING The straightener will start heating straight away. Do not touch the plates when in use as there is a risk of being burnt.

BEFORE USE RECOMMENDATIONS

We recommend conducting a section test when using the straightener for the first time. Take note of section size, position of the straightener and results. We recommend using a heat protectant to further protect hair, spraying on damp hair before drying.

STYLING - SMOOTH AND SLEEK

STEP 1 Switch On by pressing the ON/OFF operating button and wait until the heat ready beeps alerts you

STEP 2 Section hair into manageable segments between 0.5cm to 2 cm thick, use a comb to de-tangle any knots.

STEP 3 Start at the roots, place hair section between plates avoiding contact with scalp and press the plates together. The plates are designed with an air gap that keeps the plates from touching, so the sensation of 'clamping' will feel much lighter than other stylers.

WARRANTY

KEEO

STEP 4 Keeping the straightener pressed closed, slide down the hair section at a consistent, slow-paced speed. Always keep the styler moving to avoid any unwanted indentations.

STEP 5 Glide the straightener through to the ends, then release the plates from the hair. **TOP TIP** For straighter ends keep your KEEO Genius horizontal, or for a bevelled finish to the hair gently turn the straightener as the ends leave the plates.

STEP 6 Repeat steps on the next section and continue until hair styling is completed.

WARRANTY

- The product is under warranty for a maximum period of 1 year, commencing from the date of purchase by the end user. The warranty is issued against mechanical and electrical defects.
- The warranty is only valid if the device is used solely for domestic purposes in accordance with the instructions provided, and that it is not connected to an unsuitable electricity supply, dismantled or interfered with in any way or damaged through misuse. Under this

WARRANTY

warranty we undertake to replace free of charge.

- The warranty is only valid with your original sales receipt as proof of purchase. The return of the product, in the event of a fault or mechanical defect in material and workmanship within the 12 months of purchase, should only be provided to the authorized place of purchase for replacement. When making a claim under the warranty, the original receipt (with purchase date) must be submitted.

THE WARRANTY WILL NOT APPLY IN CASES OF

- Normal wear and tear
- Incorrect use, e.g., overloading of the device, use of non- approved accessories
- Use of force, damage caused by external influences
- Damage caused by non-observance of the user manual, e.g., connection to an unsuitable mains supply or non- compliance with the installation instructions
- Partially or completely dismantled devices

EXCLUSIONS

- The warranty does not cover acts of God such as floods, hurricanes or tornadoes or use for rental or commercial services.
- This warranty does not cover any claims for consequential loss or damage.
- This warranty is only valid within Australia and the United Kingdom
- Nothing in this warranty or the instructions relating to this product excludes, restricts or otherwise affects your statutory rights.
- In line with our policy of continuous product development we reserve the right to change the product, packaging and documentation specifications without notice.

CORRECT DISPOSAL OF THIS PRODUCT

This marking indicates that this product should not be disposed with other household wastes throughout Australia and the United Kingdom. To prevent possible harm to the environment or human health from uncontrolled waste disposal, recycle responsibly to promote the sustainable reuse of material resources.



KEEO™ Genius is a hair straightener like no other - a next generation heat styler which brilliantly re-imagines the styling experience. Its patented Smart-Glide technology offers significantly kinder styling which won't flatten the life out of hair.

Unlike conventional straighteners, the KEEO™ Genius has been cleverly engineered with uniquely contoured titanium plates and a protective air gap. Smart-Glide technology maximises control for smooth, sleek, wavy or curly styles with less clamping, residual heat and tension.

KEEO