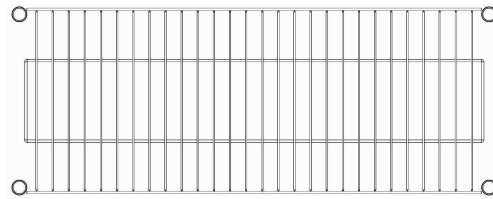
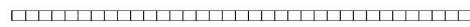


Assemble as **Single Unit**, **Dual Units**, or **Extended Unit**

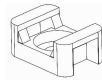
Components:



Wire Shelf **x10**



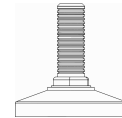
Post **x8**



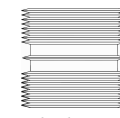
Cable Tie Base **x2**



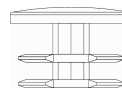
Wall Anchor & Screw **x2**



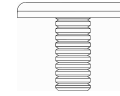
Adjustable Foot **x8**



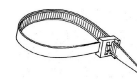
Threaded Insert **x4**
(for single unit assembly)



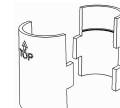
Wide Top Cap **x8**
(for dual/extended unit assembly)



Slim Top Cap **x4**
(for single unit assembly)



Cable Tie **x2**



Clip Sleeves **x80**

CUSTOMER SERVICE NEED ASSISTANCE?

Contact our customer support team:

PHONE:

(877) 655-3443

EMAIL:

support@saferacks.com

WEB:

www.saferacks.com

Single Unit Assembly

If you wish to install your rack as a single unit, follow the instructions below.

1 Assemble adjustable feet to first set of posts.

2 Install 4 clip sleeve pairs at desired shelf height (bring clips together above desired groove and lower until a "click" is heard).

NOTE: follow directional arrows

3 Assemble top posts using the threaded inserts and install slim top caps. Repeat step 2 until fully assembled.

Dual and Extended Unit Assembly

If you wish to install your rack as a dual or extended unit, follow the instructions below.

1 Assemble adjustable feet to first set of posts.

2 Install 4 clip sleeve pairs at desired shelf height (bring clips together above desired groove and lower until a "click" is heard).

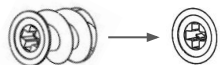
NOTE: follow directional arrows

3 Repeat step 2 until desired shelves are assembled. Install wide top caps and repeat process for the remainder of your dual or extended unit.

Anti-Tip Kit Installation

This kit is included with your unit as an optional safety feature.

*Note: Installation below is for **single unit** layouts. Use the center of the uppermost shelves for **dual units**. Use the two inner back posts for **extended units**.*



1. Drive the plastic anchor until it is flush with the wall.



2. Secure the cable tie base by inserting the metal screw through the base and into the plastic wall anchor.



3. Repeat steps 1 & 2. Ensure center to center distance is 34.50". Use the cable ties to secure both rear posts to the wall.

Layout Variations

- In extended units, install at least two shelves per section.
- Note: In **extended units**, adjacent shelves cannot be assembled at the same height. In **dual units**, secure each unit to the wall by attaching one base and tie at the center of the uppermost shelves.*

