

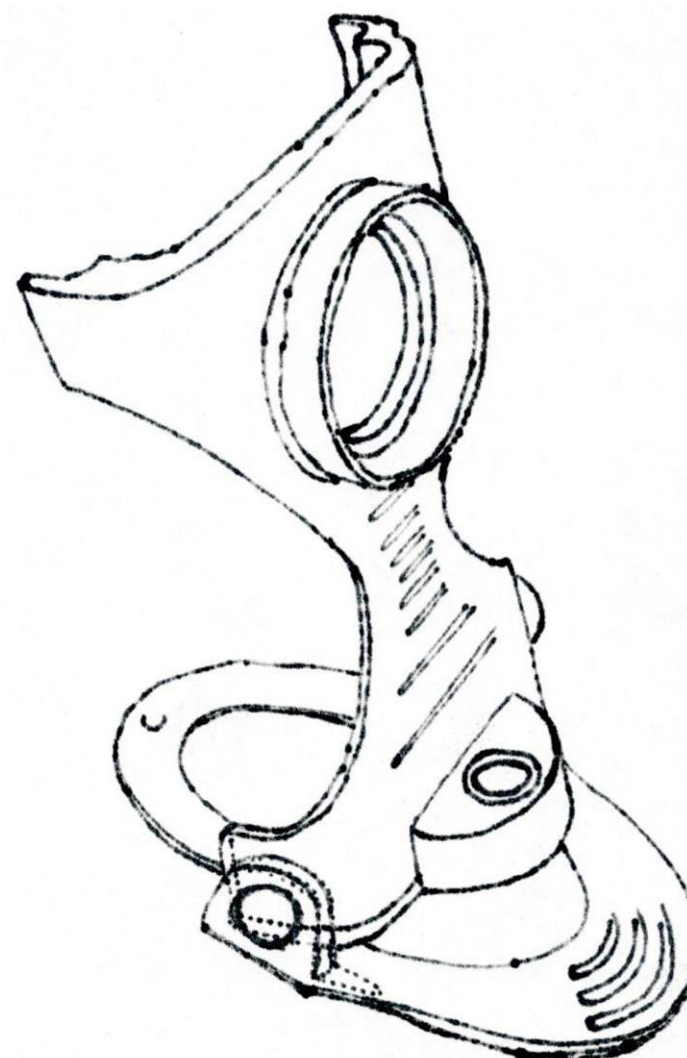
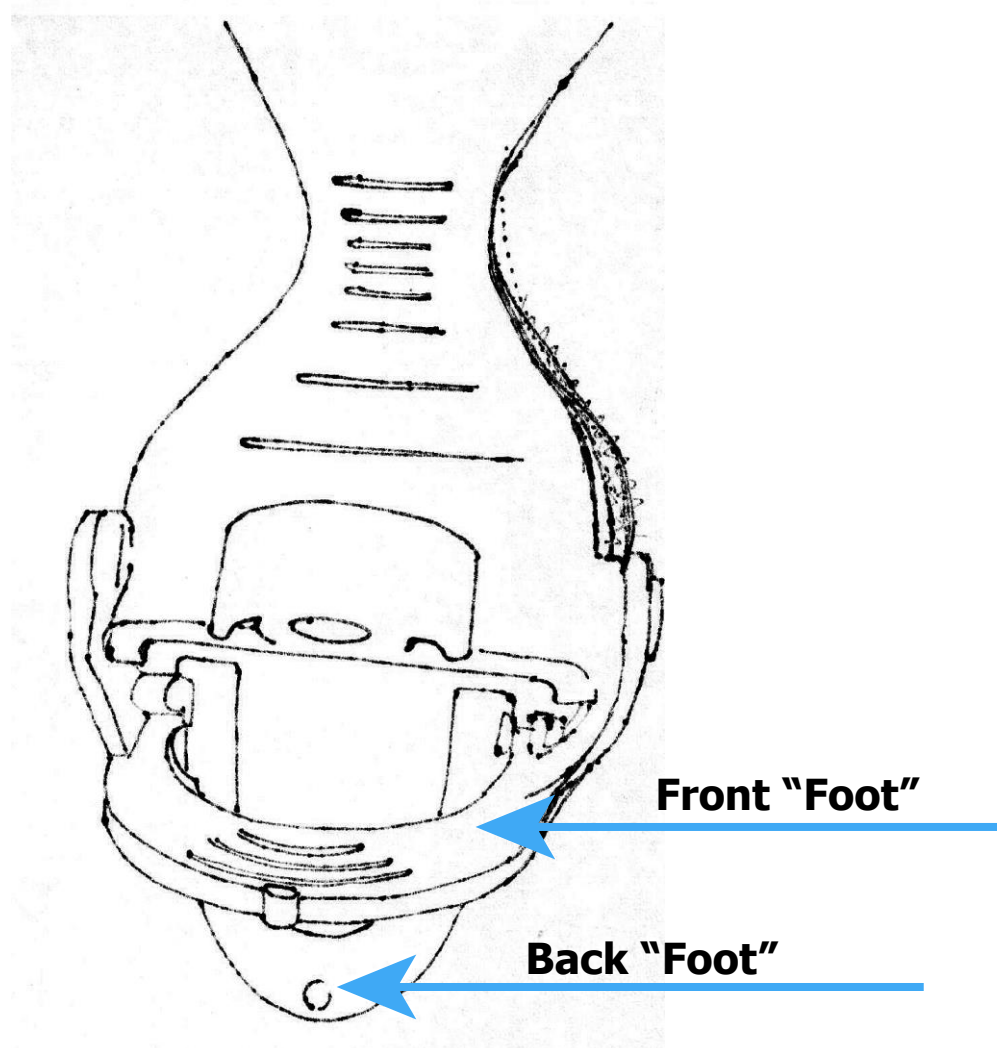
To use your stand, gently push the plastic cover against your Blynk camera until all four corners click into place. You can then attach it to any universal tripod mount or attach another lens onto the lens mount.

How to use the double action folding base

- 1) Unsnap the plastic "feet" from underneath the lens mount.
- 2) Rotate them so they are at a 90° angle with the camera.
- 3) Unsnap the back "foot" (the inside piece of plastic) from the front "foot".
- 4) Rotate the back "foot" until it forms a flat base for the camera.
- 5) Rotate to any angle you wish and enjoy!

To close the base

- 1) Snap the "feet" back together.
- 2) Clip the two locked pieces in under the lens mount.



Drawings by Sarah Montgomery