

# QUICK START GUIDE

## 1.APP Download

For Android users, you can search “Qlabel” in Google App store and download, or scan the QR below code. For Apple users, please go Apple App store to search “Qlabel” and download. The second method is scan the QR below code.



Android



iOS

## 2.Install Label Printer Paper



1. Hold the printer, Slide the button in the direction of the arrow. The machine lid will open.



2. Keep the printer paper face down.



3. Install the paper spool tab from the left side into the paper spool and jam the printing paper. As the show of picture.



4. Close the machine lid.

### 3. Calibrate Paper

After the paper is putted into the bin, the label paper needs to be calibrated.



1. Left-click to find the “Paper Type” setting and set the paper type as “Gap paper” .

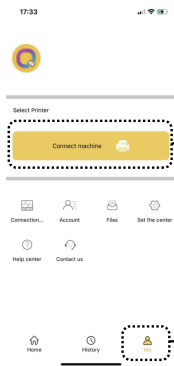


2. After setting the label type, continue to click the left button, find the “Calibrate Gap Paper” , then click the right button, the printer will automatically output the paper for calibration.

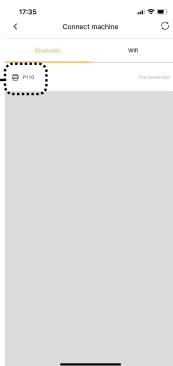


3. Waiting for the printer stop output paper, click the right button. It's accomplish calibrate if the printer output a piece of complete paper.

#### 4.Connect machine

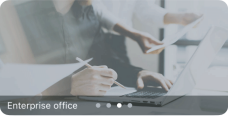


③ Choose “Bluetooth” to connect the machine







## 5. Create New Label

Q Please enter what you are looking for



Enterprise office

Home life  Commercial label 

Enterprise office  Fun playing novelty 

Click "Scan" you can create a new template by scan the QR code of label paper box

Click "New label" to enter new label edit

Enter the category directory to find the corresponding template

Home page History TAB My

< New

Select equipment model: P110

Equipment... P110 >

Name Please enter label name

Set label size (unit: mm)

Width 40

Height 30

Type  Gap  Black  Co...uous  Hole

Direction  0°  90°  180°  270°

Cable Labels

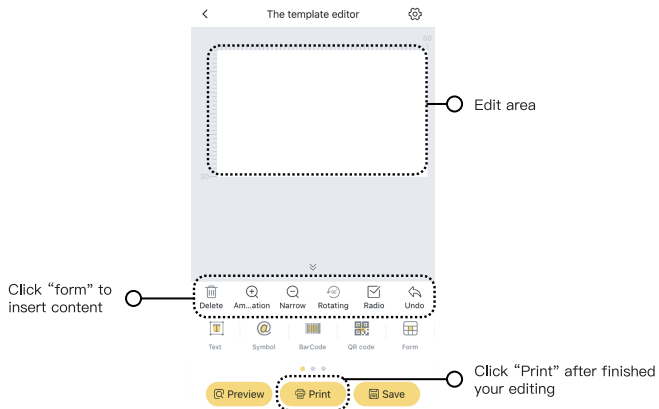
New

Click "New" to enter and start the template

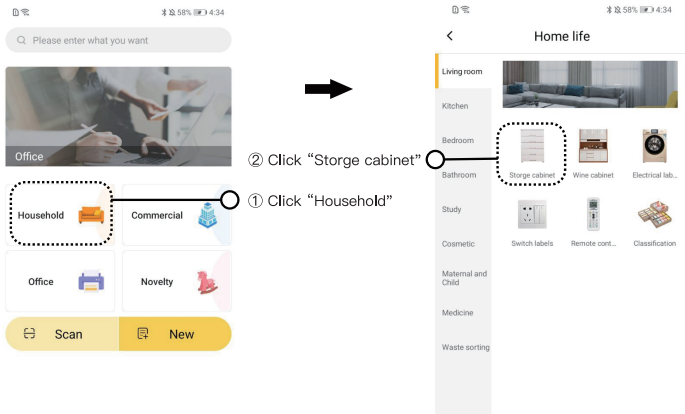
Paper type set "Gap"

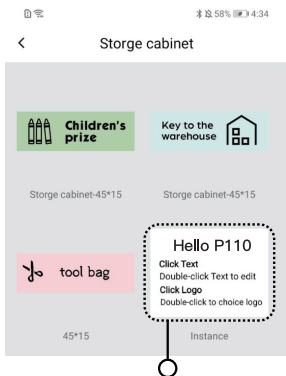
The paper output direction is set to 0° by default according to the actual situation



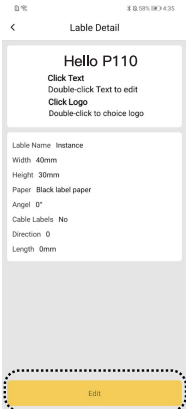


## 6. How to choose a label to print it

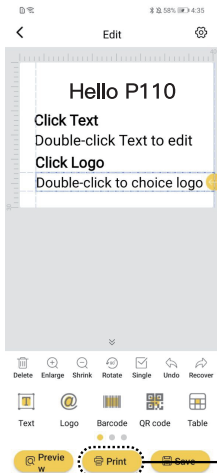




③ Click "Select a template"



④ Click "Edit"



⑤ Click "Print"

**NELKO**

Contact us:

E-mail: [support@nelko.net](mailto:support@nelko.net)

[www.nelkoprint.com](http://www.nelkoprint.com)



Scan to User Instruction