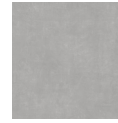


COLLECTION TRE MODA

COLOR PIETRA 48 EDGE STRIP

ITEM NUMBER **TREPI48TM**
APPLICATION **FLOOR, WALL**



PRODUCT INFO

| | |
|-------------------|---------------------|
| NOMINAL SIZE | 48" |
| ACTUAL SIZE | 47.24" |
| MATERIAL | COLORBODY PORCELAIN |
| FINISH | MATTE |
| THICKNESS | 8.5MM |
| VARIATION | V2 |
| COUNTRY OF ORIGIN | ITALY |
| CERTIFICATION | CERAMICS OF ITALY |

TESTING

| | |
|---------------------|-----------|
| DCOF WET | ≥ .42 |
| BREAKING STRENGTH | COMPLIANT |
| UNI EN ISO 10545/4 | |
| CHEMICAL RESISTANCE | COMPLIANT |
| UNI EN ISO 10545/13 | |
| WATER ABSORPTION | - 0.1% |
| UNI EN ISO 10545/3 | |
| VOC | VOC FREE |
| RECYCLED CONTENT | NO |
| FROST RESISTANT | YES |
| HEAT RESISTANT | YES |
| DIRECT SUNLIGHT | YES |

INSTALLATION

| | |
|-------------------------|-----|
| RECOMMENDED GROUT JOINT | NA |
| SEALING REQUIRED | NO |
| SEALING RECOMMENDED | YES |

PACKAGING

| | |
|-------------------|----------|
| SOLD BY | BOX |
| PIECES/BOX | 6 |
| LINEAL FEET/BOX | 23.62 LF |
| LINEAL FEET/PIECE | 3.94 LF |
| WEIGHT/BOX | 1.10 LBS |



USAGE

| | |
|--------------------|-----|
| COMMERCIAL FLOORS | YES |
| RESIDENTIAL FLOORS | YES |
| RAMPS & INCLINES | NO |
| SHOWER WALL | YES |
| SHOWER FLOOR | YES |
| STEAM/SAUNA WALL | YES |
| STEAM/SAUNA FLOOR | NO |
| FIREPLACE | YES |

POOL USAGE

| | |
|----------------|-----------------|
| POOL DECK | NO |
| POOL WATERLINE | YES |
| POOL SUBMERGED | YES (WALL ONLY) |
| SPA/HOT TUB | YES |

EXTERIOR USAGE

| | FREEZING | NON-FREEZING |
|--------------------------|----------|--------------|
| EXTERIOR COVERED WALL | YES | YES |
| EXTERIOR UNCOVERED WALL | YES | YES |
| EXTERIOR COVERED FLOOR | YES | YES |
| EXTERIOR UNCOVERED FLOOR | YES | YES |

ADDITIONAL INFORMATION

PLEASE VISIT GLAZZIOSURFACES.COM FOR ADDITIONAL PRODUCT INFORMATION INCLUDING INSTALLATION INSTRUCTIONS AND CARE & MAINTENANCE GUIDELINES.

ACTUAL COLOR, SIZE, AND TEXTURE MAY VARY. PLEASE REFER TO SAMPLE CHIP FOR VISUAL ACCURACY.

glazzio®
SURFACES