

COLLECTION SKIN COLOR IBEX

ITEM NUMBER **SKIIB12X24M**
APPLICATION **FLOOR, WALL**

PRODUCT INFO

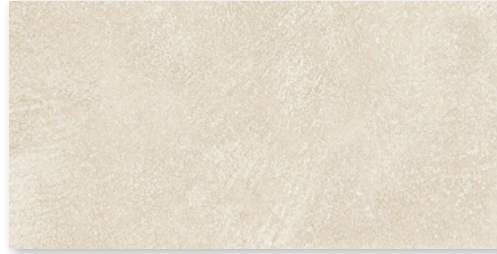
| | |
|-------------------|---------------------|
| NOMINAL SIZE | 12" X 24" |
| ACTUAL SIZE | 11.81" X 23.63" |
| MATERIAL | COLORBODY PORCELAIN |
| FINISH | MATTE |
| THICKNESS | 9.5 MM |
| RECTIFIED | YES |
| FACES | UP TO 56 |
| VARIATION | V3 |
| COUNTRY OF ORIGIN | ITALY |

TESTING

| | |
|---------------------|--------------------------|
| DCOF WET | ≥ .50 |
| MODULUS OF RUPTURE | ≥ 45 N / MM ² |
| UNI EN ISO 10545/4 | |
| BREAKING STRENGTH | ≥ 2000 N |
| UNI EN ISO 10545/4 | |
| BREAKING STRENGTH | 400 LBS |
| ASTM C648 | |
| CHEMICAL RESISTANCE | A - LA - HA |
| UNI EN ISO 10545/13 | |
| CHEMICAL RESISTANCE | UNAFFECTED |
| ASTM C650 | |
| STAIN RESISTANCE | CLASS 5 |
| UNI EN ISO 10545/14 | |
| WATER ABSORPTION | COMPLIANT |
| UNI EN ISO 10545/3 | |
| WATER ABSORPTION | COMPLIANT |
| ASTM C373 | |
| VOC | GREENGUARD GOLD |
| RECYCLED CONTENT | 12% |
| FROST RESISTANT | YES |
| HEAT RESISTANT | YES |
| DIRECT SUNLIGHT | YES |

INSTALLATION

| | |
|-------------------------|----------------------------|
| RECOMMENDED GROUT JOINT | 3/16" |
| SEALING REQUIRED | NO |
| SEALING RECOMMENDED | YES |
| RECOMMENDED PATTERNS | STACK, BOND, 1/3 OFFSET |



PACKAGING

| | |
|------------|-----------|
| SOLD BY | BOX |
| PIECES/BOX | 6 |
| SQFT/BOX | 11.63 SF |
| SQFT/PIECE | 1.94 SF |
| WEIGHT/BOX | 69.82 LBS |

USAGE

| | |
|--------------------|-----|
| COMMERCIAL FLOORS | YES |
| RESIDENTIAL FLOORS | YES |
| RAMPS & INCLINES | NO |
| SHOWER WALL | YES |
| SHOWER FLOOR | YES |
| STEAM/SAUNA WALL | YES |
| STEAM/SAUNA FLOOR | NO |
| FIREPLACE | YES |

POOL USAGE

| | |
|----------------|-----------------|
| POOL DECK | YES |
| POOL WATERLINE | YES |
| POOL SUBMERGED | YES |
| SPA/HOT TUB | YES (WALL ONLY) |

EXTERIOR USAGE

| | FREEZING | NON-FREEZING |
|--------------------------|----------|--------------|
| EXTERIOR COVERED WALL | YES | YES |
| EXTERIOR UNCOVERED WALL | YES | YES |
| EXTERIOR COVERED FLOOR | YES | YES |
| EXTERIOR UNCOVERED FLOOR | YES | YES |

ADDITIONAL INFORMATION

PLEASE VISIT GLAZZIOSURFACES.COM FOR ADDITIONAL PRODUCT INFORMATION INCLUDING INSTALLATION INSTRUCTIONS AND CARE & MAINTENANCE GUIDELINES. ACTUAL COLOR, SIZE, AND TEXTURE MAY VARY. PLEASE REFER TO SAMPLE CHIP FOR VISUAL ACCURACY.

glazzio
SURFACES