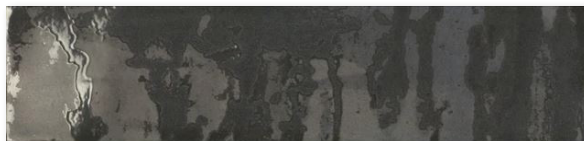


COLLECTION PRINCETON GLAZE

COLOR NERO NIGHT 3X12

ITEM NUMBER **PRG842**
APPLICATION **FLOOR, WALL**



PRODUCT INFO

NOMINAL SIZE	3" X 12"
ACTUAL SIZE	2-15/16" x 11-7/8"
PEI	N/A
MATERIAL	CERAMIC
THICKNESS	9.8 MM
FINISH	MATTE + GLOSSY
FACES	36
SPECIAL EDGE	PRESSED
VARIATION	V4
COUNTRY OF ORIGIN	SPAIN

TESTING

DCOF DRY	N/A
BREAKING STRENGTH	N/A
ASTM C648	
CHEMICAL RESISTANCE	GLA + GA
ASTM C650	
STAIN RESISTANCE	5
ASTM C1378	
WATER ABSORPTION	>10%
ASTM C373	
VOC	N/A
FROST RESISTANT	NO
HEAT RESISTANT	YES
DIRECT SUNLIGHT	YES

INSTALLATION

RECOMMENDED GROUT JOINT	3/16"
RECOMMENDED GROUT	N/A
SEALING REQUIRED	NO
SEALING RECOMMENDED	YES

PACKAGING

SOLD BY	BOX
POUNDS PER PIECE/SHEET	0.73 LBS
PIECES/BOX	20
SQF PER BOX	4.85 SQF
SQFT/PIECE	0.2425 SQF
WEIGHT/BOX	14.6 LBS
BOXES PER PALLET	120

USAGE

COMMERCIAL FLOORS	NO
RESIDENTIAL FLOORS	NO
RAMPS & INCLINES	NO
SHOWER WALL	YES
SHOWER FLOOR	NO
STEAM/SAUNA WALL	YES
STEAM/SAUNA FLOOR	YES
FIREPLACE	YES

POOL USAGE

POOL DECK	NO
POOL WATERLINE	NO
POOL SUBMERGED	NO
SPA/HOT TUB	NO

EXTERIOR USAGE

	FREEZING	NON-FREEZING
EXTERIOR COVERED WALL	NO	NO
EXTERIOR UNCOVERED WALL	NO	NO
EXTERIOR COVERED FLOOR	NO	NO
EXTERIOR UNCOVERED FLOOR	NO	NO

ADDITIONAL INFORMATION

PLEASE VISIT GLAZZIOSURFACES.COM FOR ADDITIONAL PRODUCT INFORMATION INCLUDING INSTALLATION INSTRUCTIONS AND CARE & MAINTENANCE GUIDELINES.

ACTUAL COLOR, SIZE, AND TEXTURE MAY VARY. PLEASE REFER TO SAMPLE CHIP FOR VISUAL ACCURACY.