



Tag & Follow Us

@FURTHERCUSTOMS



 WWW.FURTHERCUSTOMS.COM

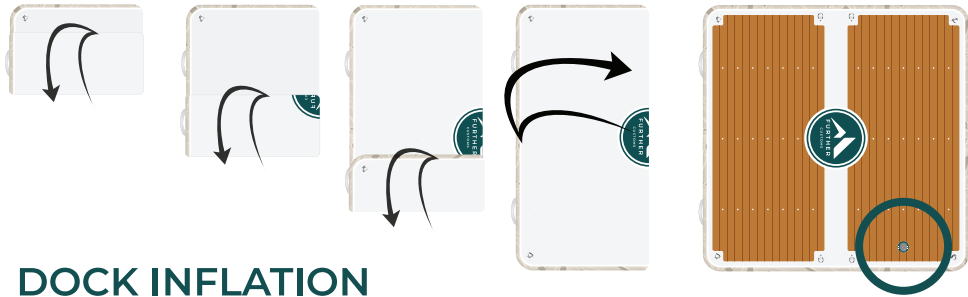
 INFO@FURTHERCUSTOMS.COM

 888.803.8784



INFLATABLE SUP & DOCK MANUAL

DOCK UNROLLING



DOCK INFLATION

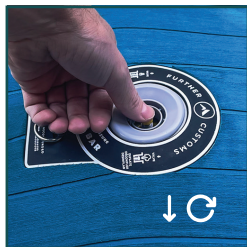
1. To prepare your inflatable dock for inflation roll your dock onto a flat & smooth surface.
2. Confirm that the valve stem is in the up position by pushing the valve stem down and twisting a quarter turn. The up position allows air into, but not out of the dock.
3. Insert the pump hose and turn clock-wise into the receiving valve.
4. Pump the dock until the gauge reaches 7 PSI for optimal stiffness & rigidity, or until it feels firm enough for your preference.

*** PUMP GAUGE WILL NOT RISE UNTIL INTERNAL PRESSURE REACHES 6 PSI ***



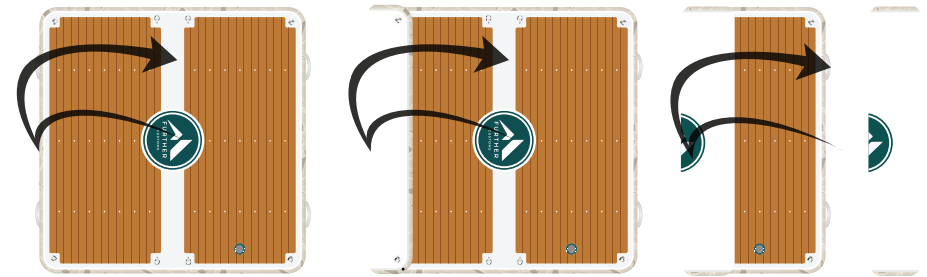
Remove Valve Cap Push Valve Stem Down & Rotate Down to Deflate Up to Inflate

DOCK DEFLATION



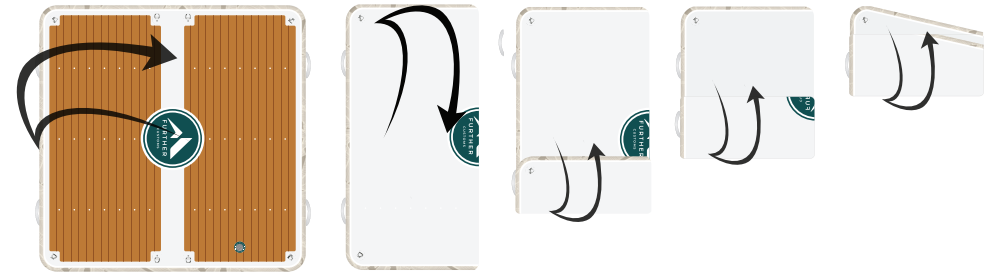
1. To deflate your dock push down and quarter turn the valve stem to place it in the down position. When the valve stem is in the down position air will flow out of the dock.
2. Then fold the dock edge towards the valve stem to remove air from the dock.
3. Reverse the hose connection and pump to remove any remaining air from the dock.

DOCK ROLLING & STORAGE



Option A - Roll Only (Recommended)

1. Rolling the dock towards the valve will be the most convenient method of deflating the dock. This method will protect the EVA from the UV rays and reduce wear over time. The deflated dimensions will be about 7' x 12" x 6".



Option B - Fold & Roll

1. Folding the dock in half and then rolling towards the valve will reduce the the dock to the deflated dimensions of about 44" x 12" x 12". Although this method makes for the smallest stored size, this technique of folding and then rolling can create some creasing to the EVA over time.

If you're primary goal for storage is reducing space then we recommend storing by option B, however storing by option A when possible can increase the longevity and retain the aesthetic quality of the product over time.

SPECIAL CONSIDERATIONS



TOWING & CONNECTIONS

The D-rings located along the top and bottom edges of the dock are intended for connecting to cleats, boats, dinghies, paddleboards and other objects. They are not, however, designed for towing at high speeds. Towing in excess of 6 knots or in choppy conditions can result in separation of the D-ring from the dock. Additionally, the 4 accessory mounts in the center of the dock have smaller D-rings designed exclusively for connecting the dock pillow and are not for towing.

BOARD INFLATION



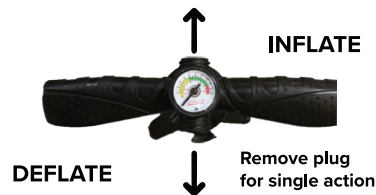
1. To prepare your inflatable paddleboard for inflation roll your board onto a flat & smooth surface.
2. Confirm that the valve stem is in the up position by pushing the valve stem down and twisting a quarter turn. The up position allows air into, but not out of the board.
3. Insert the pump hose and turn clock-wise into the receiving valve near the tail & top of the board.
4. Pump the board until the gauge reaches 15-18 PSI. Although the board will feel rigid at 12 PSI, we recommend the additional inflation to 17 PSI for optimal rigidity & performance.

*** PUMP GAUGE WILL NOT RISE UNTIL INTERNAL PRESSURE REACHES 6 PSI ***



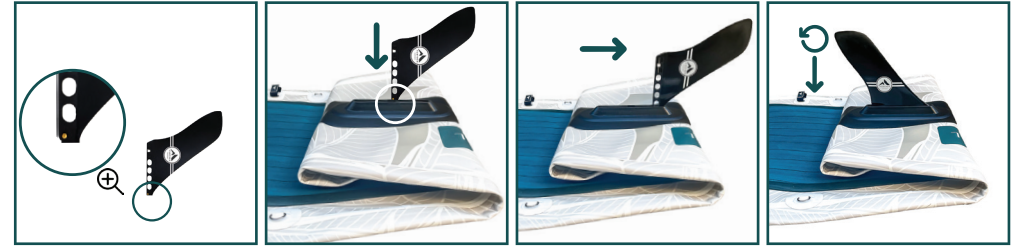
Remove Valve Cap Push Valve Stem Down & Rotate Down to Deflate Up to Inflate

BOARD DEFLATION



1. To deflate your board push down and quarter turn the valve stem to place it in the down position. When the valve stem is in the down position air will flow out of the board.
2. Then fold the board from nose to tail towards the valve stem to remove air from the board.
3. Reverse the hose connection and pump to remove any remaining air from the board.
4. For maximum compression of the board, fold the board now from tail to nose. The length of the fin box matches the width of the bag. Folding from the fin box to nose will make for a perfect fit inside the bag each time.

FIN INSTALLATION



1. Locate the knob at the lower front end of the fin.
2. Angle & insert fin, knob first, into the fin slot at the base of the board.
3. Slide fin towards the front end of the board.
4. Push the back of the fin down and flush into the fin box.

CARE & MAINTENANCE



LIMIT EXPOSURE TO DIRECT SUNLIGHT

Extended exposure to direct sunlight & UV rays when not in use can result in fading and damage to your inflatable products. Storing your board or dock in a shaded & well ventilated area will extend the life of your product.



PLACE BOARD WITH EVA TRACTION PAD FACING DOWN

The deck pad is designed to provide traction however this material also insulates heat and can increase the internal temperature of your board. Placing the board with the traction pad facing down will reduce your boards internal temperature & help retain your boards color & vibrancy.



STORE IN MODERATE TEMPERATURES WHEN NOT IN USE

Extended exposure to temperatures below 0 & above 135 degrees Fahrenheit can compromise the seal along the seams of all inflatable products. Storing in areas without ventilation can result in extreme temperatures (i.e. Garage or Vehicle).



RINSE WITH FRESH WATER AFTER USE

Rinse the board or dock with fresh water to remove salt and sand deposits after use.



WEAR A COAST GUARD APPROVED PERSONAL FLOTATION DEVICE

In areas designated outside of swimming, surfing or bathing it is required by law that riders wear a United States Coast Guard approved flotation device.



LEAK DETECTION

If you are experiencing pressure loss begin by searching for a leak near the valve. The valve may come loose from use over time and can be easily tightened using the tool included in your repair kit. Apply soap and water to any suspected puncture and leak areas. Bubbles will emerge if a leak or puncture has occurred. Included in your board bundle is a repair kit with glue and PVC repair fabric if needed.



SHARE YOUR FIRST EXPEDITION & TAG US [f](#) [i](#) [v](#) [t](#) [@FURTHERCUSTOMS](#)