

**Cozyla**

# Cozyla Album

Cozyla CD-3X501F

## User Guide

# Basics

## Note:

All pictures and illustrations in this document are for reference only.

The My Cozyla App supports both Android™ and iOS systems. This document uses the Android system as an illustrative example.

Because the My Cozyla App will regularly be updated, refer to the latest version for the actual procedure and screenshots.

Keep the network stable during use of the Cozyla Album.

The My Cozyla App referred to in this manual is a phone app.

Before using this information and the product it supports, be sure to read the following:

Safety, Warranty & Quick Start Guide Regulatory Notice


"Important safety and handling information" in "Appendix".

The Safety, Warranty & Quick Start Guide and the Regulatory Notice are available at:

<https://cozyla.com/pages/support>

## Cozyla Help

Looking for help? The My Cozyla App can offer you support with direct access to Cozyla's web assistance\*, frequent Q&A\*, system upgrades\*, service requests\* ...

1. Open the app and log in with your account.
2. Enter Home screen , tap  > Support to get more help.


## Note:

\* requires data network access.

\*\* is not available in some countries.

## Privacy protection

To protect your privacy, you can delete the device data by removing the Cozyla Album device or performing a factory reset in the app.

1. Open the app and log in with your account.
2. Enter **Channels** , tap 
  - Tap **Remove device** to remove the existing Cozyla Album devices.
  - Enter **About device** , tap **Factory reset** to factory reset.

## Technical specifications

|                               |   |
|-------------------------------|---|
| <b>Model</b>                  | Cozyla CD-3X501F  |
| <b>Dimension</b>              | 10.1" IPS Screen, 266.6*185.4*15.5mm (exclude stand)  |
| <b>Resolution</b>             | 1280 x 800  |
| <b>Wireless communication</b> | Bluetooth 5.0;<br>WLAN 802.11 ac/a/b/g/n, 2.4GHz(2402MHz-2480MHz)/<br>5GHz(5150MHz-5850MHz) |

# Getting started

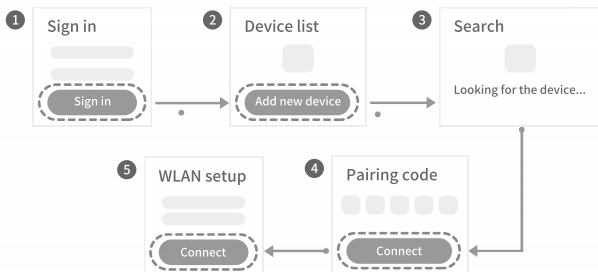
## Getting the app

Search for and download the My Cozyla App from the Google Play Store or Apple App Store to begin the setup process.

## Connecting to device

You'll need to connect your Cozyla Album to the Internet before using it.

1. Open the My Cozyla App.
2. Log in to the app with your Cozyla ID. You can also sign up using email, or use your Google or Facebook accounts to login in.
3. Turn on Bluetooth. In the app's Home Screen (Device List) , tap Add New Device to find a device. Once a device is found, you can follow the instructions to confirm that it is the right device by matching the numbers displayed on both screens, and select Connect to continue.
4. Connect to a WLAN network for your Cozyla Album device.
5. Follow the on-screen instructions to set up your Cozyla Album and connect your Google Photo or Amazon Alexa account.

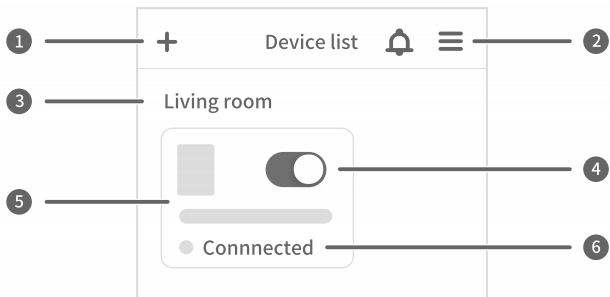


6. Video of installation and setup: [www.cozyla.com/pages/video-guide](http://www.cozyla.com/pages/video-guide).
7. If you have questions, please send your request to the email: [help@cozyla.com](mailto:help@cozyla.com).

# Using My Cozyla App

## Home Screen (Device List)

After signing up on your app, enter the Home Screen (Device List) . Pull down from anywhere on the screen to refresh.



- 1 Add device and manage rooms
- 2 Include App settings, Voice control, Support, Contact us and About
- 3 Display room name
- 4 Turn on/off the device's sleep mode
- 5 The Cozyla Album device image, tap it to enter the channels
- 6 Display the connectivity status of the device

# Channel list

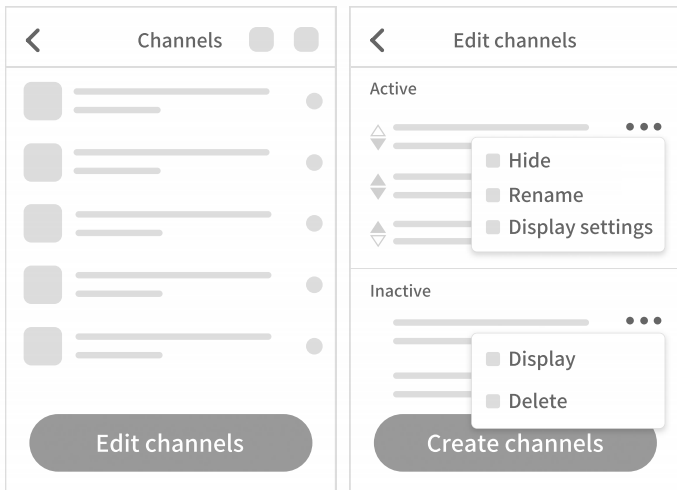
The Cozyla Album device includes several channels to display different content. You can edit the channel, select a default or optional channel, or create a new channel.

**Selected photos:** Allows you to select album(s) from your existing Google Photos account. **Art gallery:** Displays a pre-composed collection of artwork.

**Recommendation:** Curates photos from your entire Google Photos library randomly based on an intelligent algorithm using criteria such as this week in history and

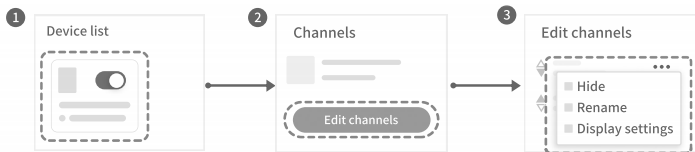
If there are items that you may not want the frame to show, be sure to archive them directly from your Google Photos account before displaying this channel.

**Clock:** Displays a full screen clock face of your choice.



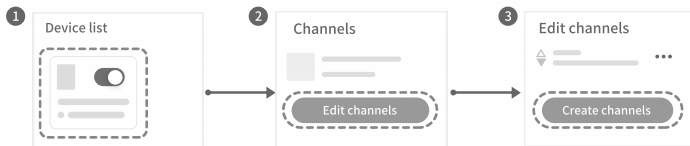
## Manage your channel

1. Open the app, enter the **Device list**, tap **Channels** .
2. Tap **Edit channels** .
3. Remove channels from the channel list or add channels to the channel list and then tap **Save**.



## Create channel

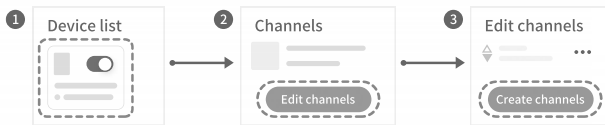
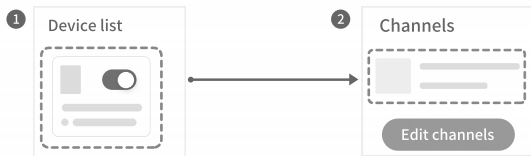
1. Open the app, enter the **Device list** , go to **Channels > Edit channels** .
2. Tap **Create channel** , Choose the source and customize the name of the channel .



# Function display

## Display your photos

1. Open the app, enter **Home screen (Device list) > Channels**
2. Click, select an existing photo channel, or click **Create channel** to create a channel



Choose the **Display settings** from the device control page , and set up the photo display style.

The **Show pair** switch is set to on by default and needs be turned off to display single photos.

Turn on the **Lock orientation** switch and the Cozyla Album device will only show photos in the locked orientation.

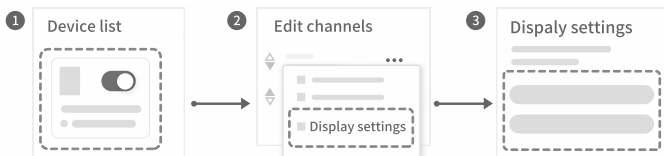
Tap **Slideshow speed** and select the speed at which your photo slideshow plays. During the slideshow, you can pause and play the photos.

Turn on **Curated collage display** switch and the Cozyla Album device will auto-curate and display collages.



## Show photo created date and show time

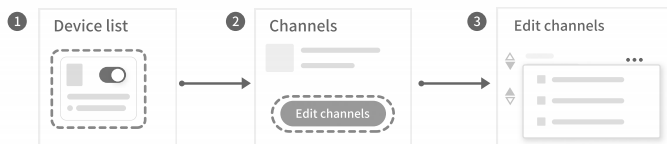
1. Open the app, enter the **Channels**.
2. Choose the **Display settings** from the edit channels page, and set up the date and time.
  - Tap Show Time and select 12-Hour time or 24-Hour time.
  - The Display Photo Created Date switch is set to on by default.



## View clock

The clock channel displays a full-screen clock face of your choice. (It is not displayed in the default channel list)

1. Open the app and enter **Channels** .
2. Enter the channels page and click "**Edit channels**" to enter the edit channel page. Find the Clock, and click "... " button, click "Display", then **save** .



# Voice Control

## Amazon Alexa authorization

1. For the first time usage, you will be asked to authorize Alexa service with Amazon account in the application's first setup stage .



Tap **Slideshow Speed** and select the speed at which your photo slideshow plays. During the slideshow, you can pause and play the photos.

Turn on **Curated Collage Display** switch and the Smart Frame device will auto-curate and display collages.

\*Please refer to page 12 "How to use Alexa" on Alexa available functions and usages.

2.If Alexa service is not setup during first setup stage, you can still enter **Device Control Panel > Display Settings** to authorize.

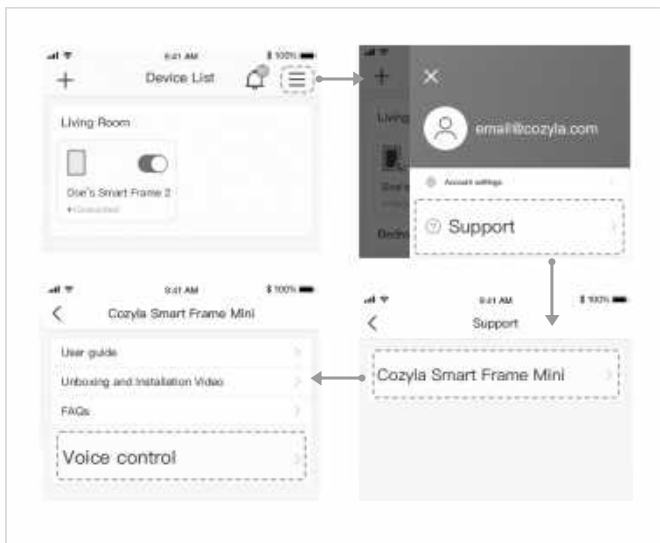


\*Please refer to page 12 “How to use Alexa” on Alexa available functions and usages.

## Alexa

Control the Smart Frame mini device with your voice. According to different commands, the Smart Frame mini device performs different actions. For example: You can say "Alexa, turn on Cozyla smart frame" or "Alexa, turn on Cozyla smart frame". You can also latest instructions from below steps .

1. Open the app, enter the **Home Screen (Device List)** .
2. Tap **☰** > Support > **Cozyla smart frame mini** > **Voice control**. There will be more instructions about Alexa voice .

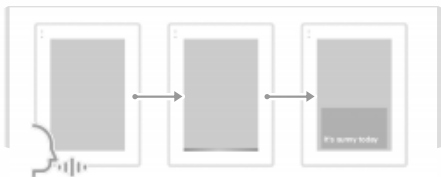


\*Please refer to page 12 "How to use Alexa" on Alexa available functions and usages.

## How to use Alexa

1. There are 2 ways to wake up Alexa:

a) Wake up by voice (the default wake up word is "Alexa")



b) Swipe down from the top of the device screen to use the Alexa button



2. When Alexa is successfully activated, a blue light strip will appear at the bottom.

3. Say the voice command like “Alexa, what’s the weather today?”

ⓘ With Alexa Built-in certification, Cozyla Album can support most of Alexa voice services including: Smart Home Control, Music (including Amazon Music, iHeartRadio, TuneIn, Deezer, Pandora, Audible, Kindle Books, iHeartRadio), Alexa Productivity (Calendar, Alarms, Lists, Do not Disturb, Flash Briefing, Reminders, Timers, News), Routine and translation. You can also enable new skills in Alexa app. Calling and Message of Alexa is not supported.

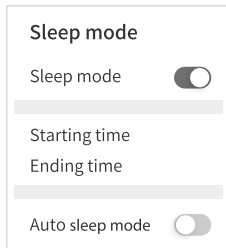
## Remove the authorization of Alexa

1. If you remove the device from Alexa app or Alexa web page, the frame will be automatically removed authorization.


2. Factory reset the device.

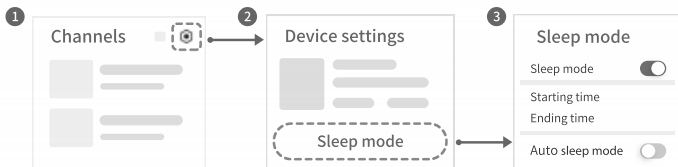
# Sleep mode

Sleep Mode is defaultly set to 11:00pm to 6:00am. You can turn it on and adjust the time based on your preference. You can also turn on the Smart Sleep Mode which will automatically turn on/off Sleep mode based on the environment light and time.



## Manage Sleep mode and set a preset time

1. Open the app and enter **Channels** .
2. Go to  > **Sleep mode** , the **Sleep mode** switch is set to on by default and needs be turned off to disable the sleep mode preset .
3. Set a preset time .
4. You can also turn on the auto sleep mode .



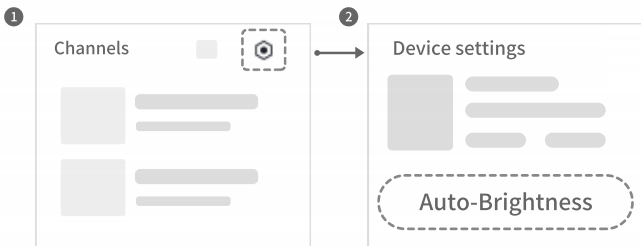
# Auto-Brightness

The screen of Cozyla Album automatically adjusts the brightness according to your surrounding environment, it is on by default, you can turn it off according to your needs .

## Manage Auto-Brightness

1. Open the app and enter **Channels** .
2. Enter the device settings page, find the automatic brightness. The default setting is on, you can turn it off according to your needs .

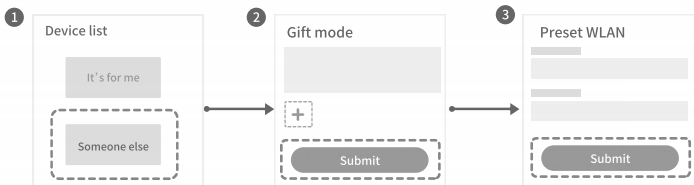
**Note: When manually adjusting brightness settings, the brightness will still automatically revert back to auto-brightness presets when a preset time arrives.**



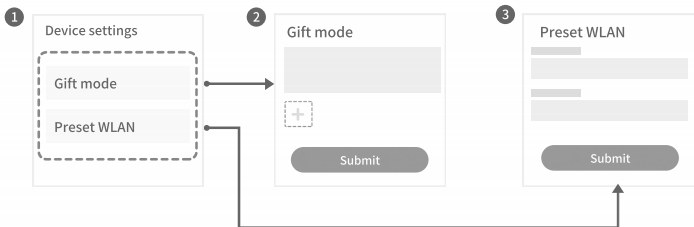
# Gift mode

Gift Mode: After the following configuration, you can send the device as a gift to others. The recipient can power on and use the device directly with the preset settings, photos and welcome message.

User can select the gift mode in the oobe stage if you want to preset WLAN, accounts, photos and welcome messages for the recipient.



Users can also configure the device first. Gift mode can still be triggered in the "Device Setting" (Choose Device -> Click Device Setting on the top right corner -> Gift Mode").

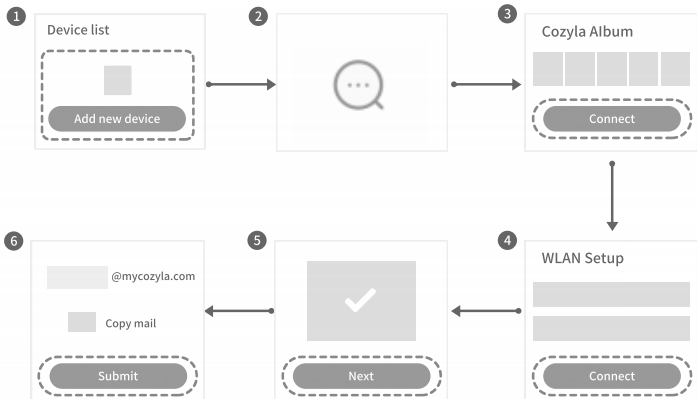




# Cozyla mail

After the device configuration is completed in the OOB, a My Cozyla mailbox will be generated for you. You can upload photos/videos by sending email to the address. Please share the address to your friends if needed.

The content size uploaded from single Email cannot exceed 40MB.



# Appendix

## Important safety and handling information

To avoid personal injury, property damage, or accidental damage to the product, read all of the information in this section before using the product. For additional tips to help you operate your device safely, go to <https://www.cozyla.com/pages/security>

### Handle your device with care

Do not drop, bend, or puncture your device; do not insert foreign objects into or place heavy objects on your device. Sensitive components inside might become damaged.

Your device screen is made of glass. The glass might break if the device is dropped on a hard surface, is subjected to a high impact, or is crushed by a heavy object. If the glass chips or cracks, do not touch the broken glass or attempt to remove it from the device. Stop using the device immediately and contact Cozyla technical support for repair, replacement, or disposal information.

When using your device, keep it away from hot or high-voltage environments, such as electrical appliances, electrical heating equipment, or electrical cooking equipment. Use your device only in the temperature range of 0°C (32°F) to 40°C (104°F) (storage -20°C (-4°F) to 60 °C (140°F)) to avoid damage.

Don't expose your device to water, rain, extreme humidity, sweat or other liquids.

### Do not disassemble or modify your device

Your device is a sealed unit. There are no end-user serviceable parts inside. All internal repairs must be done by a Cozyla-authorized repair facility or a Cozyla-authorized technician. Attempting to open or modify your device will void the warranty.

### Plastic bag notice

**DANGER:**

**Plastic bags can be dangerous. Keep plastic bags away from babies and children to avoid danger of suffocation.**

## Adapter information

Prevent your device and AC adapter from getting wet.

Do not immerse your device in water or leave your device in a location where it can come into contact with water or other liquids.

Use approved charging methods only.

**Note: Please only use standard Cozyla power adapters. The use of third-party power adapters will affect the charging speed, resulting in abnormal charging and potential damage to the equipment.**

**Charging devices might become warm during normal use. Ensure that you have adequate ventilation around the charging device. Unplug the charging device if any of the following occurs:**

**The charging device has been exposed to rain, liquid, or excessive moisture.  
The charging device shows signs of physical damage.**

**You want to clean the charging device.**



### **Warning:**

Cozyla is not responsible for the performance or safety of products not manufactured or approved by Cozyla. Only use approved Cozyla ac adapters.

## Dispose according to local laws and regulations

When your device reaches the end of its useful life, do not crush, incinerate, immerse in water, or dispose of your device in any manner contrary to local laws and regulations. Some internal parts contain substances that can explode, leak, or have an adverse environmental effects if disposed of incorrectly. See "Recycling and environmental information" for additional information.

## **Keep your device and accessories away from small children**

Your device contains small parts that can be a choking hazard to small children. Additionally, the glass screen can break or crack if dropped on or thrown against a hard surface.

## **Be aware of heat generated by your device**

When your device is turned on, some parts might become hot. The temperature that they reach depends on the amount of system activity. Extended contact with your body, even through clothing, could cause discomfort. Avoid keeping your hands, your lap, or any other part of your body in contact with a hot section of the device for any extended time.

### **Electronic emission notices**

#### **FCC Compliance Statement**

This equipment has been tested and found to comply with the limits for a Class B digital device, pursuant to Part 15 of the FCC Rules. These limits are designed to provide reasonable protection against harmful interference in a residential installation. This equipment generates, uses, and can radiate radio frequency energy and, if not installed and used in accordance with the instructions, may cause harmful interference to radio communications. However, there is no guarantee that interference will not occur in a particular installation. If this equipment does cause harmful interference to radio or television reception, which can be determined by turning the equipment off and on, the user is encouraged to try to correct the interference by one or more of the following measures:

Reorient or relocate the receiving antenna.

Increase the separation between the equipment and receiver.

Connect the equipment into an outlet on a circuit different from that to which the receiver is connected.

Consult an authorized dealer or service representative for help.

Cozyla is not responsible for any radio or television interference caused by unauthorized changes or modifications to this equipment. Unauthorized changes or modifications could void the user's authority to operate the equipment.

**This device complies with Part 15 of the FCC Rules. Operation is subject to the following two conditions:**

- (1) This device may not cause harmful interference.
- (2) This device must accept any interference received, including interference that may cause undesired operation.

Responsible Party:

Cozyla US CORP.  
10520 Chapel Hill Road, #105,  
Morrisville 27560,  
North Carolina ,US, 919 279 5338

**ISED Caution**

This device complies with Innovation, Science and Economic Development Canada license-exempt RSS standard(s). Operation is subject to the following two conditions:

- 1) This device may not cause interference.
- 2) This device must accept any interference, including interference that may cause undesired operation of the device.

Le présent appareil est conforme aux CNR d'Industrie Canada applicables aux appareils radio exempts de licence. L'exploitation est autorisée aux deux conditions suivantes:

- 1) l'appareil ne doit pas produire de brouillage, et
- 2) l'utilisateur de l'appareil doit accepter tout brouillage radioélectrique subi, même si le brouillage est susceptible d'en compromettre le fonctionnement.

## Environmental, recycling, and disposal information

### General recycling statement

Cozyla encourages owners of information technology (IT) equipment to responsibly recycle their equipment when it is no longer needed. Cozyla offers a variety of programs and services to assist equipment owners in recycling their IT products.

### Important WEEE information



Electrical and electronic equipment marked with the symbol of a crossed-out wheeled bin may not be disposed as unsorted municipal waste. Batteries and waste of electrical and electronic equipment (WEEE) shall be treated separately using the collection framework available to customers for the return, recycling, and treatment of batteries and WEEE. When possible, remove and isolate batteries from WEEE prior to placing WEEE in the waste collection stream.

## Troubleshooting

### Unable to pair to smart phone

1. Make sure that the device is not connected to any other smart phone. The device can only connect to one smart phone at a time.
2. Make sure the Bluetooth function on your smart phone is working properly. You may test your smart phone Bluetooth function by pairing it to other smart phones.
3. On the device, in to the "About device" page, click "... "icon, click "Reset the device" to re-pair.

4. If you still cannot pair the smart phone, please call customer service.

### **Fail to log into Google Photos**

- 1) Make sure your smart phone is connected to the Internet.
- 2) Make sure Google Photos is available at the time and region you are using it.
- 3) Make sure your My Cozyla App is the latest version. Reinstall if needed.
- 4) Make sure the network remains stable when you log in with your Google ID.
- 5) If you still cannot log in, please call customer service.

### **Why Google ID may require login twice**

This is part of the Google security mechanism where you are required to log in to your Google ID after a period of time.

### **Cannot connect to WLAN**

1. If your frame cannot connect to WLAN, go to the "settings" page on your device, click WLAN, and select a network for the device.
2. If the above does not solve the issue, please call customer service. The Frame is unresponsive.
  - 1) Please unplug and plug back in the power cable.
  - 2) If it still cannot be resolved, please call customer service.

© Copyright Cozyla 2022

**Reduce | Reuse | Recycle**

