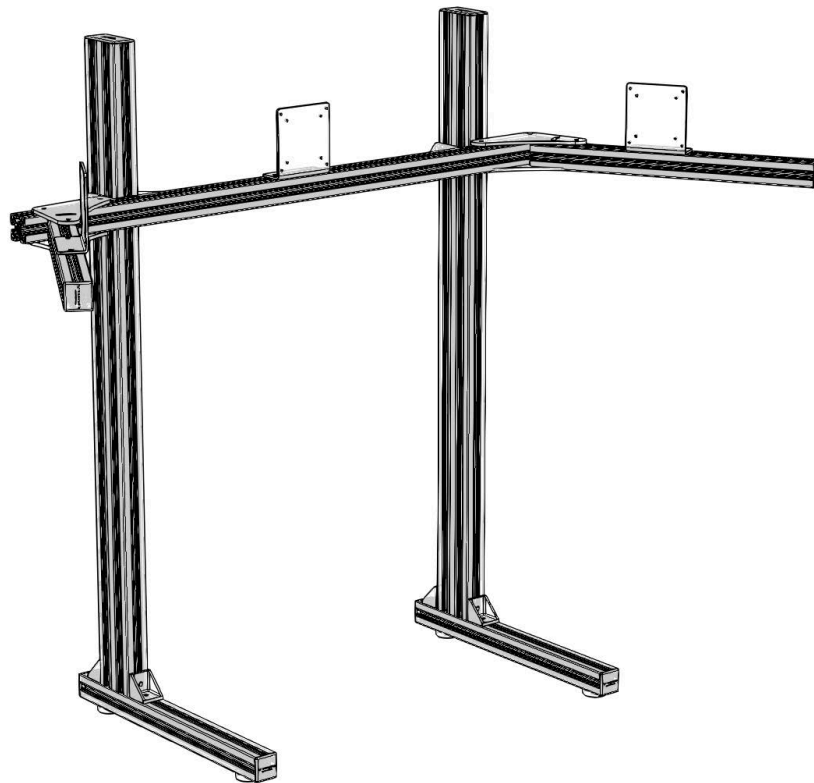




Phantom Series

Phantom Light Duty Triple Monitor Stand

Assembly Instructions



Our Support Team is here for you.

Feel free to reach out to us and we will be happy to help.



Email



Web Chat



Skype



WhatsApp



Messenger

Address : Info@allin1gaming.com



Unboxing

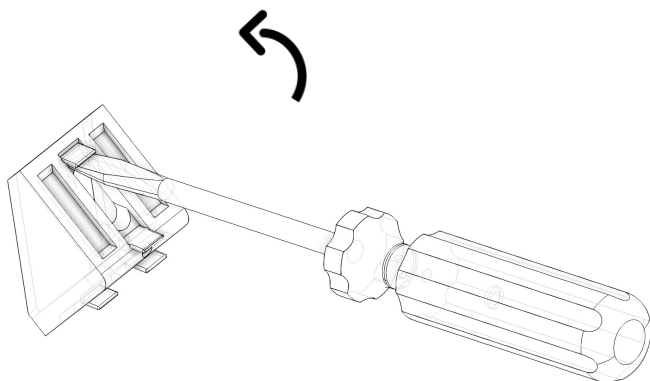
- Open every box first. Each group or section of the whole of a whole was seperatley packed.
- Consider placing the flattened cardboard boxes on the floor under your components to prevent them from getting scratched during assembly.
- As you discard the packaging, be careful to not accidentally throw a part away. Please recycle as much as possible.

Tips

- You can slide T-nuts in from the end of an extrusion or insert them anywhere along the length of the extrusion—no need to dismantle to insert a T-nut.
- T-nuts work similarly regardless of their orientation. No need to orient them in the same direction inside the T-slot.
- Tighten fasteners with your fingers first and leave them slightly loose until you've finished assembling a sub-section. Once you've completely assembled your machine (or a sub-assembly), tighten it all up.

Corner Brackets

Tabs on the corner brackets may need to be removed if they are perpendicular to the extrusion they are placed on. In this case they won't lie flatly on the extrusion. This can be done by placing a flathead screwdriver behind the tab and tilt upwards away from your body.



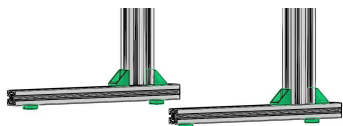
The assembly instructions will show the bottom break tab symbol on the appropriate steps where tabs need ot be broken off.



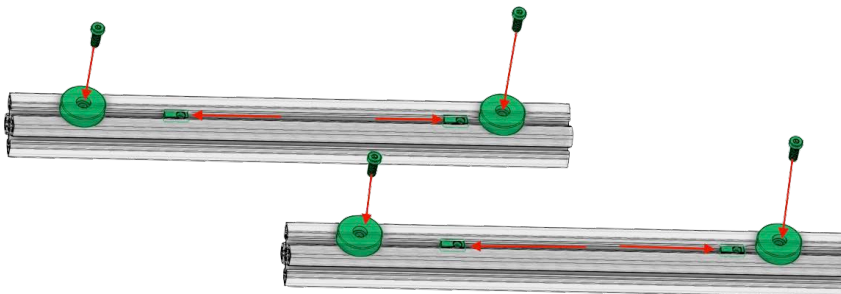


Step 1: Base Assembly

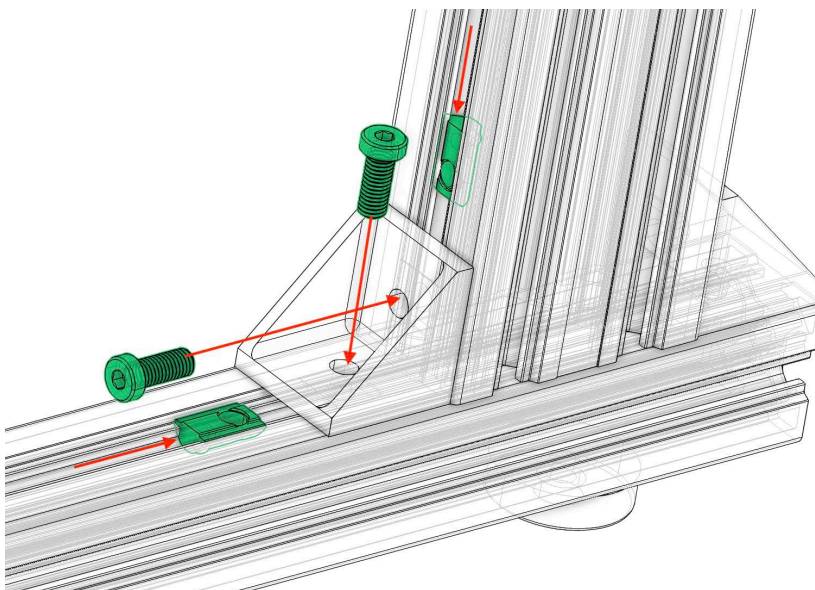
Light Duty Monitor Stand Assembly Instructions



1

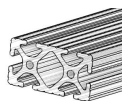


2



Repeat step 1 for 3 remaining corners

2 x



15x30 Uprights

2 x



15x15 feet

4 x



1515 Bracket

12 x



16mm M8 Bolt

12x



M8 T-Nut

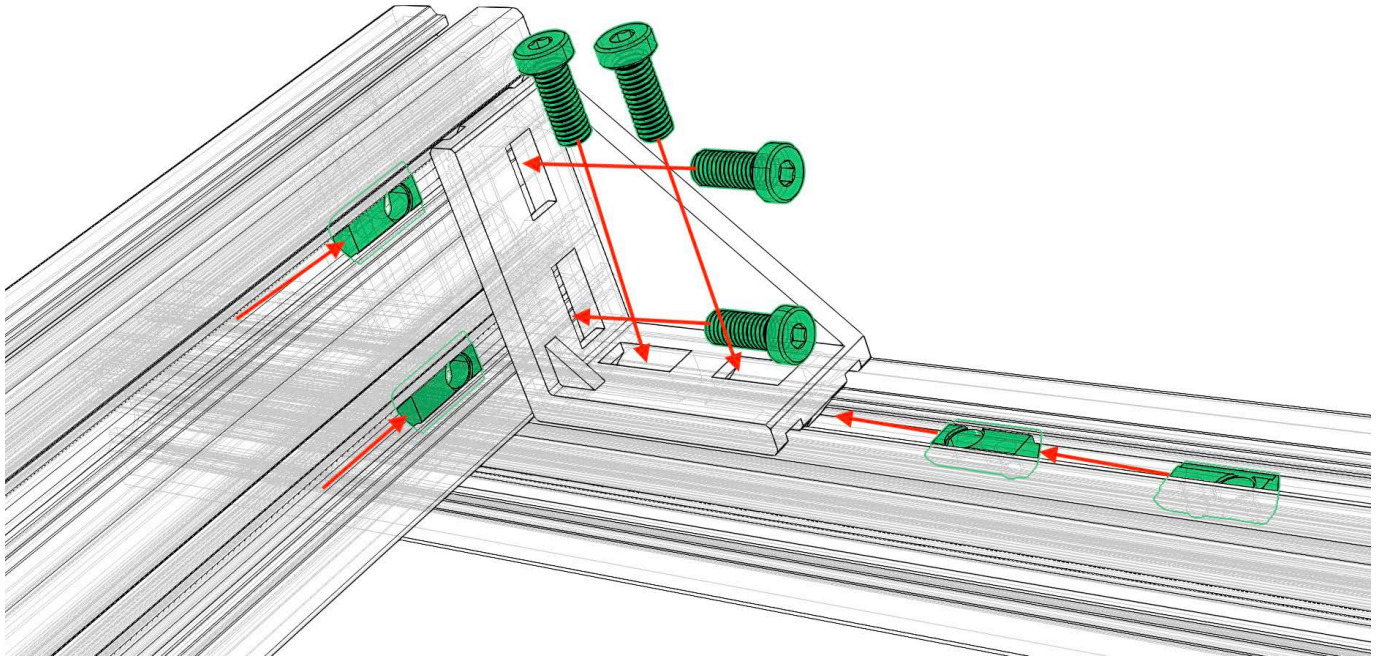
4 x



MT-RF-M8-01

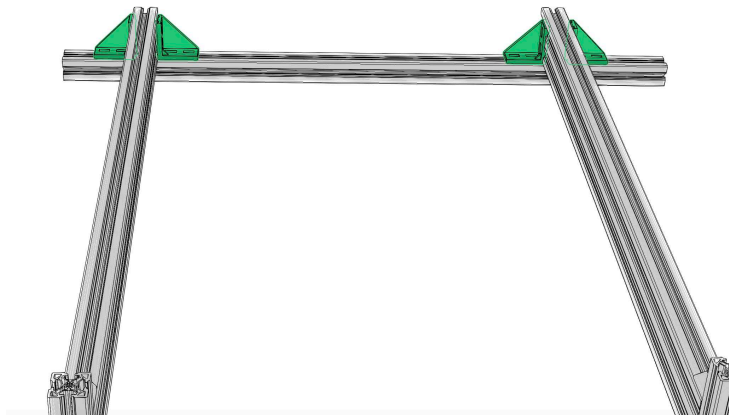


1



Repeat Step 1 for the 3 remaining corners.

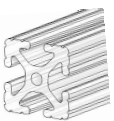
2



Quick Tip:

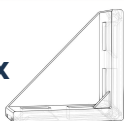
Measure the width of your rig and add 2-4 inches on each side. Use that measurement as the distance between the 2 uprights during assembly.

1 x



1515 Cross Bar

4x



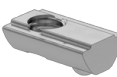
CB-PH-1530-01

16x

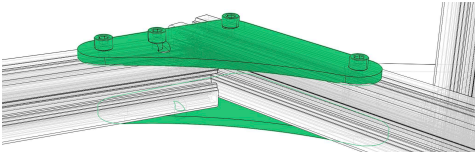


M8 20mm Bolt

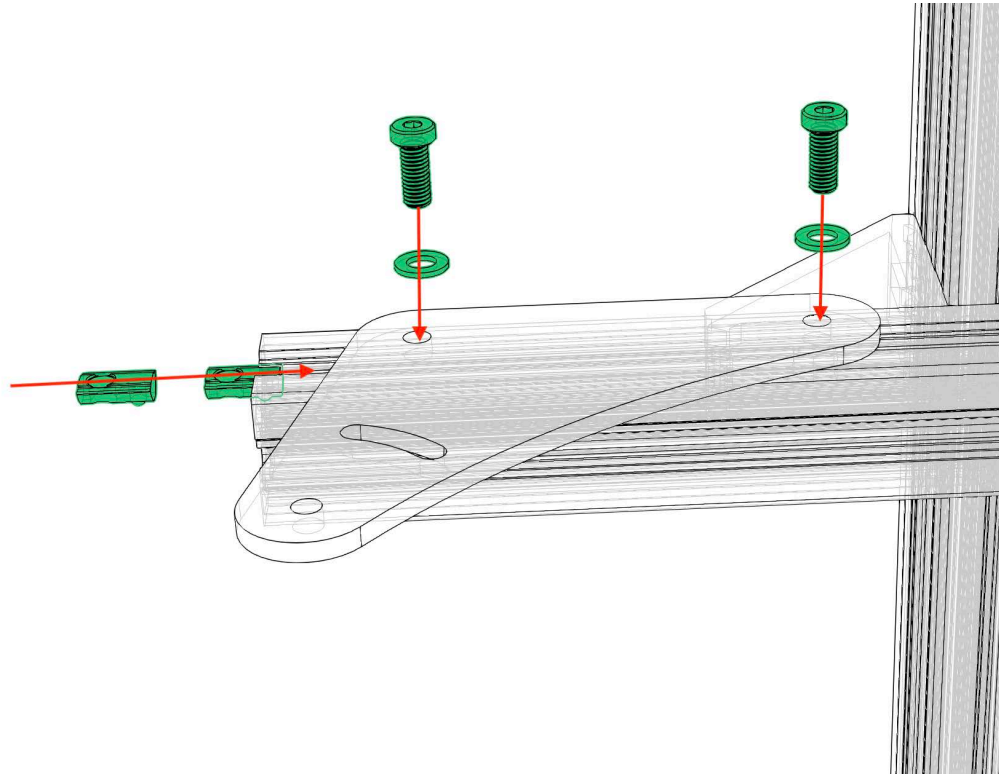
16x



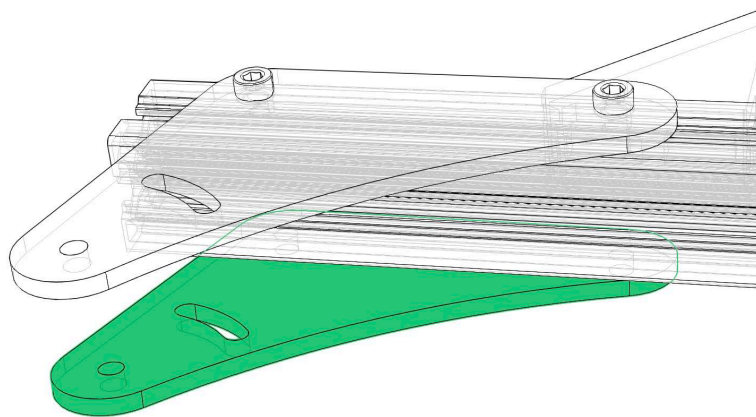
M8 T-Nut



1



2



Repeat for underside

4 x



M8 T-Nut

4 x



20mm M8 Bolt

2 x

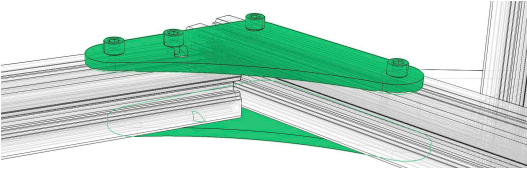


Pivot Plate

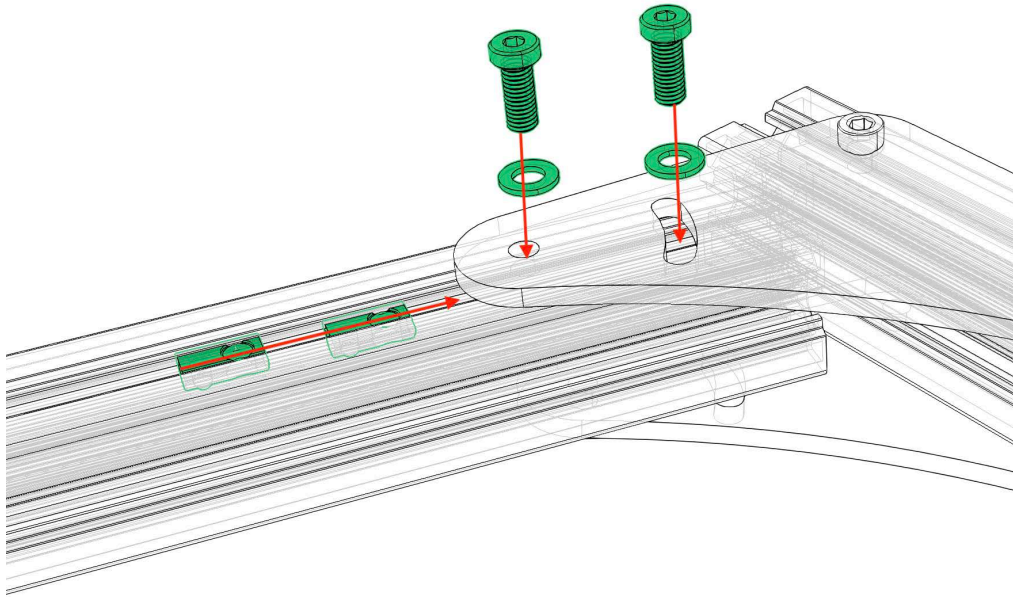
4 x



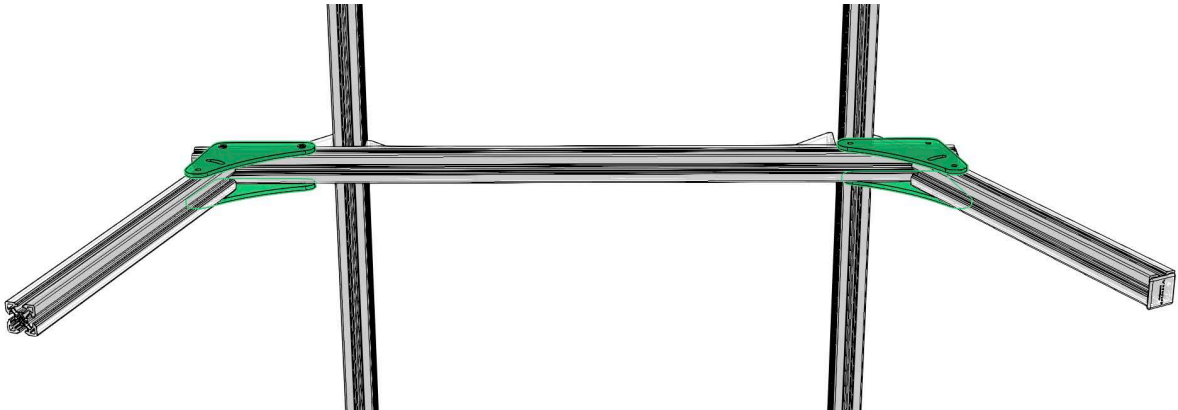
M8 Washer



1



2



Repeat steps for underside and opposite side

2 x



Side Profiles

12 x



M8 T-Nut

12 x



20mm M8 Bolt

2 x



Pivot Plate

12 x

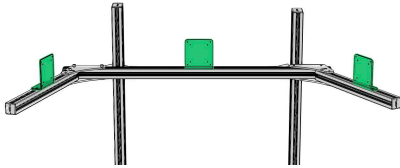


M8 Washer

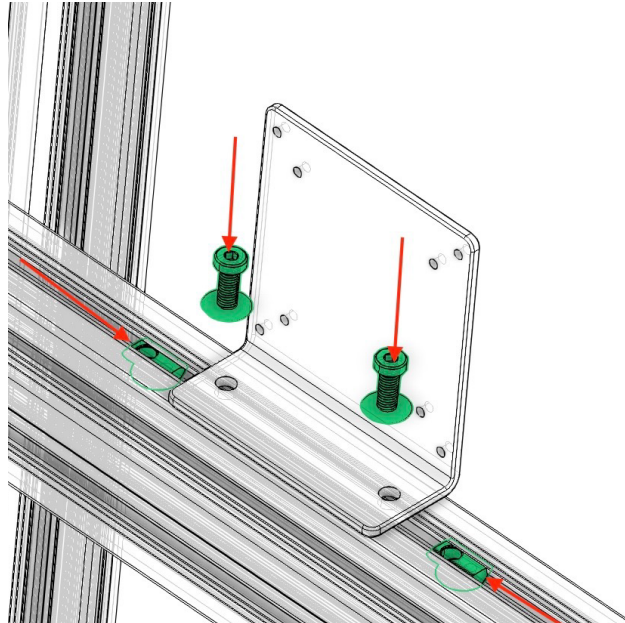


Step 4: Install VESA Mount & End Caps

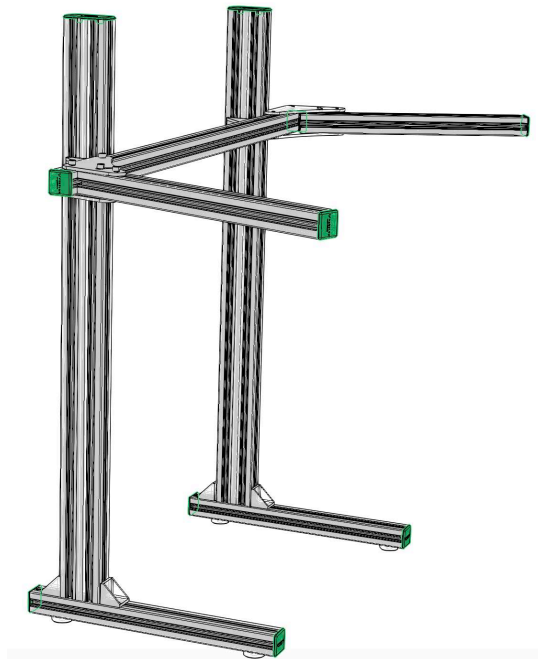
Light Duty Monitor Stand Assembly Instructions



Install VESA Mounts x 3



Attach end caps



6 x



M8 18mm

6 x



M8 T-NUT

6 x



M8 Washer