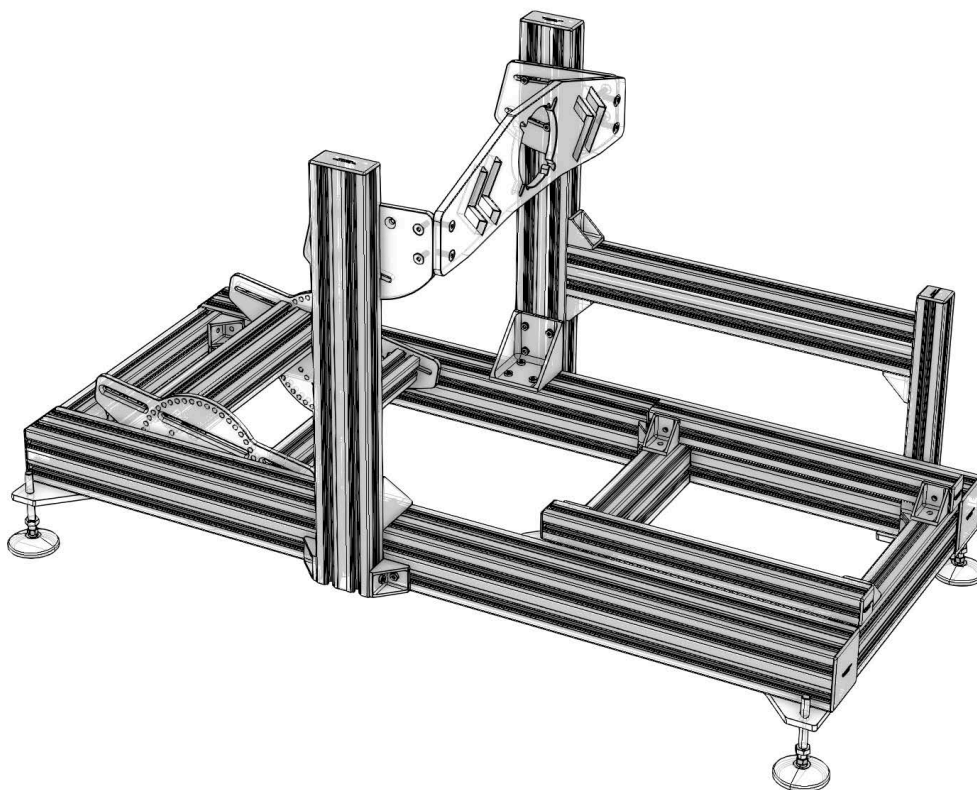


## Pro-Motion

### Assembly Instructions



**Your pit crew is here to support you.**



[allin1gaming.com/support](https://allin1gaming.com/support)  
support page



[info@allin1gaming.com](mailto:info@allin1gaming.com)  
email our team



Skype Us  
[allin1gaming](https://allin1gaming.com)



[allin1gaming.com](https://allin1gaming.com)  
chat with a live agent



## Unboxing

- Open every box first. Each group or section of the whole of a whole was seperatley packed.
- Consider placing the flattened cardboard boxes on the floor under your components to prevent them from getting scratched during assembly.
- As you discard the packaging, be careful to not accidentally throw a part away. Please recycle as much as possible.

## Tips

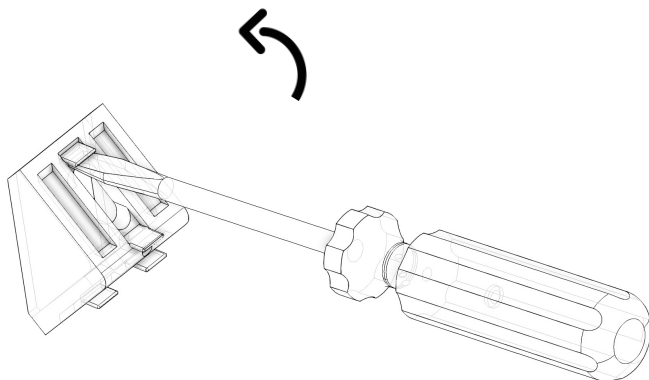
- You can slide T-nuts in from the end of an extrusion or insert them anywhere along the length of the extrusion—no need to dismantle to insert a T-nut.
- T-nuts work similarly regardless of their orientation. No need to orient them in the same direction inside the T-slot.
- Tighten fasteners with your fingers first and leave them slightly loose until you've finished assembling a sub-section. Once you've completely assembled your machine (or a sub-assembly), tighten it all up.

The Anodization process that makes such beautiful profiles also makes them more vulnerable to scratches. Please be extra careful during assembly and place the profiles carefully without bumping them into anything.

Each aluminum profile that we receive is carefully inspected, cleaned and individually wrapped to ensure that your frame will look beautiful. We reject any piece that does not live up to our standards. That being said, it would be impossible to send back every profile that has a small imperfection and that will not even show in the final assembly. If we notice a small scratch on a profile that has an “underside” that will not be visible in the final cockpit, we do mark that side with a t-nut.

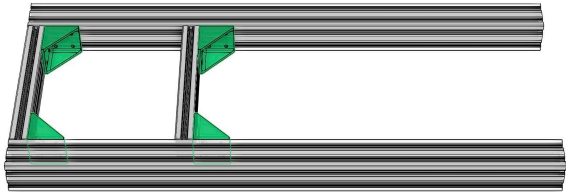
## Corner Brackets

Tabs on the corner brackets may need to be removed if they are perpendicular to the extrusion they are placed on. In this case they won't lie flatly on the extrusion. This can be done by placing a flathead screwdriver behind the tab and tilt upwards away from your body.



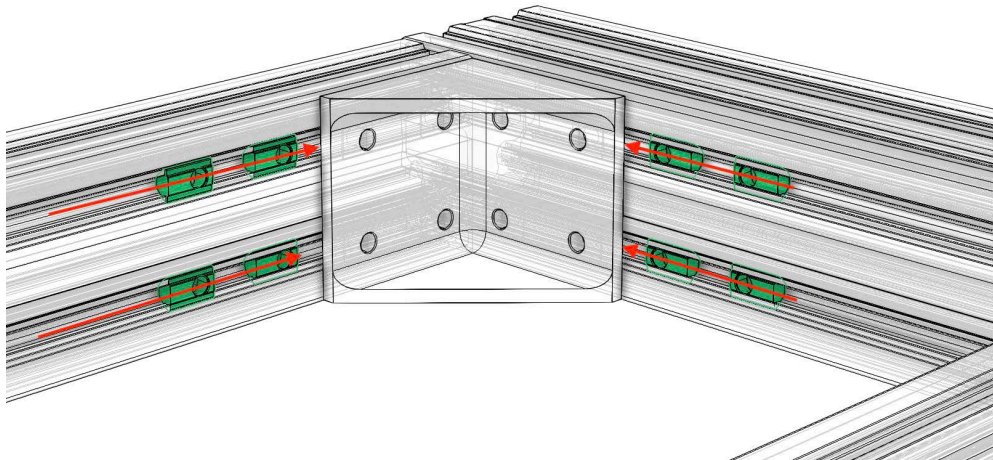
The assembly instructions will show the bottom break tab symbol on the appropriate steps where tabs need ot be broken off.



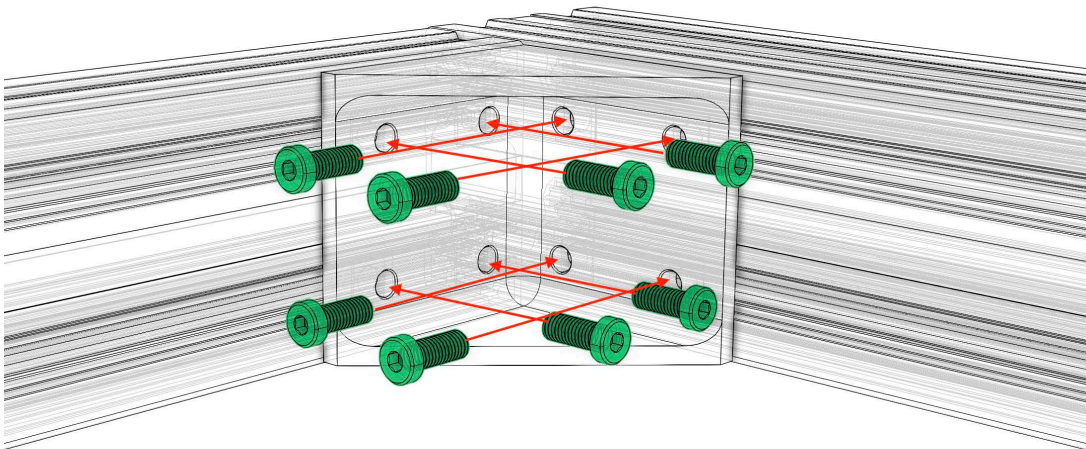


495mm (19.5 inches) distance between the back and middle profiles.

**1**



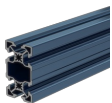
**2**



**3**

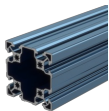
Repeat the process for the remaining corners

3 x



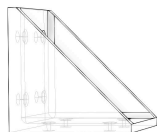
ST-EXT-002-0405

2 x



ST-EXT-005-1395

4 x



9090 Corner Bracket

12 x



4545 Corner Bracket

24 x

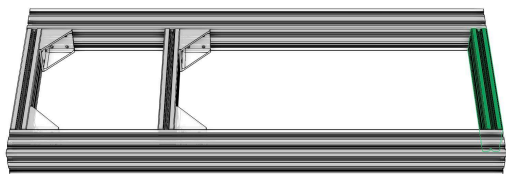


HW-FN-003-0018

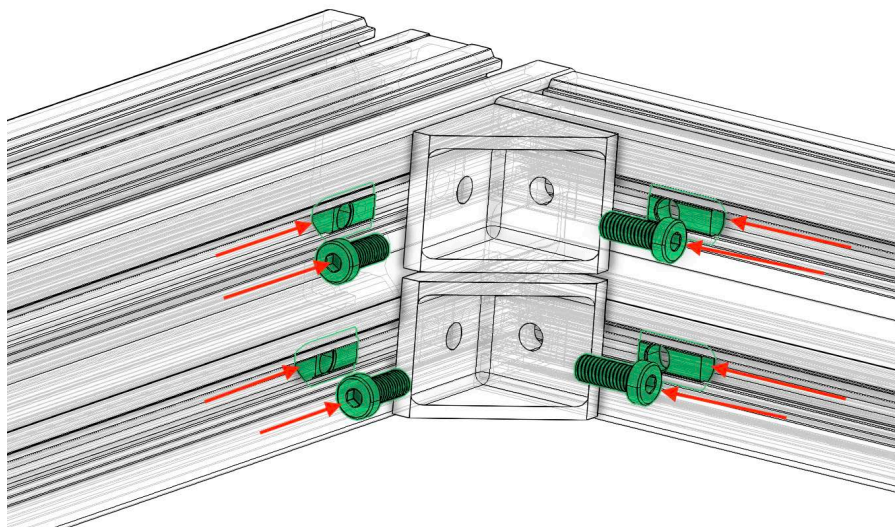
24 x



HW-FN-002-0001



1

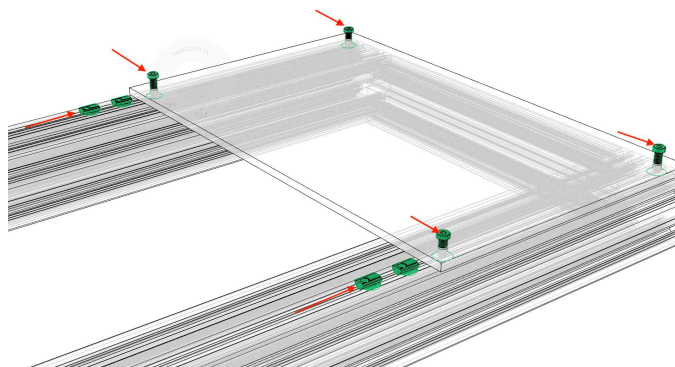


2

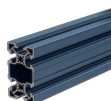
Repeat the process for the other side

3

\*\*optional. If you purchase the motion control box shelf, add it now



1 x



ST-EXT-002-0405

4 x



HW-CB-4545-001

8 x



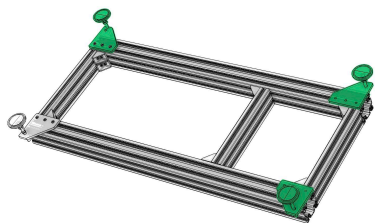
18mm Bolt

8 x

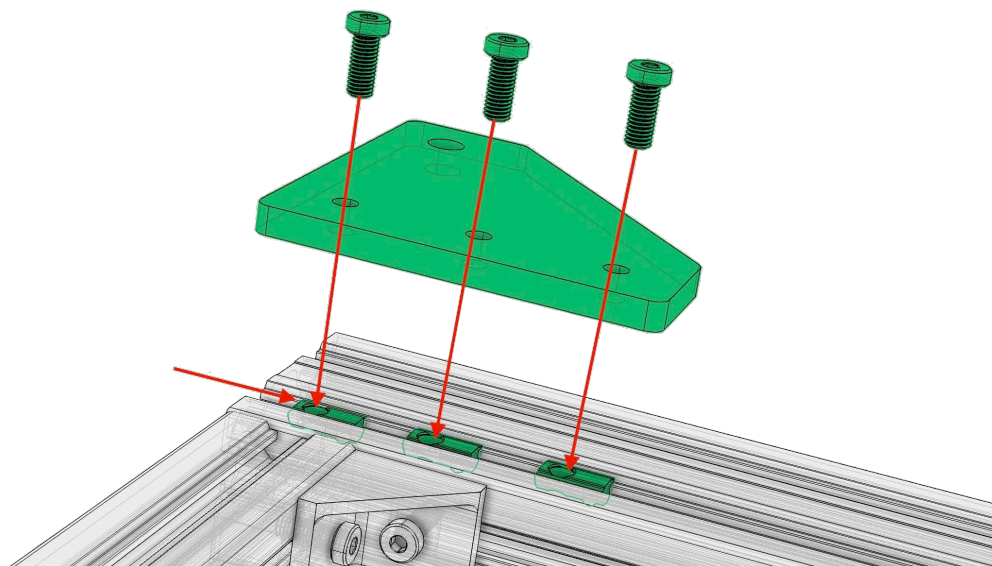


M8 T-Nut

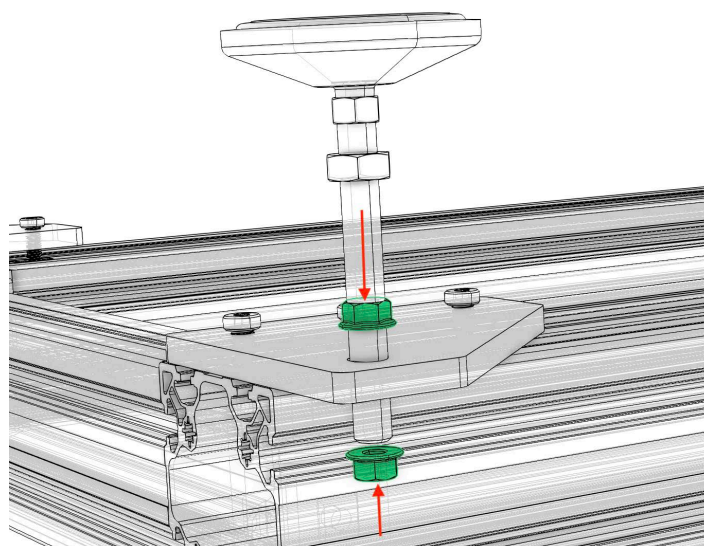




1



2



3

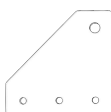
Repeat the process for the positions below

4 x



M12 Leveling Foot

4 x



Base Plate

12 x



22mm M8 Bolt

12 x

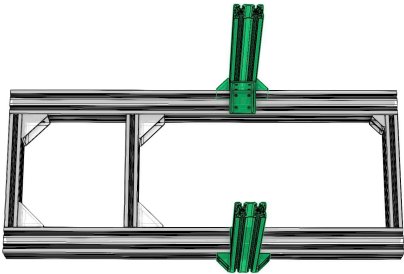


M8-Tnut

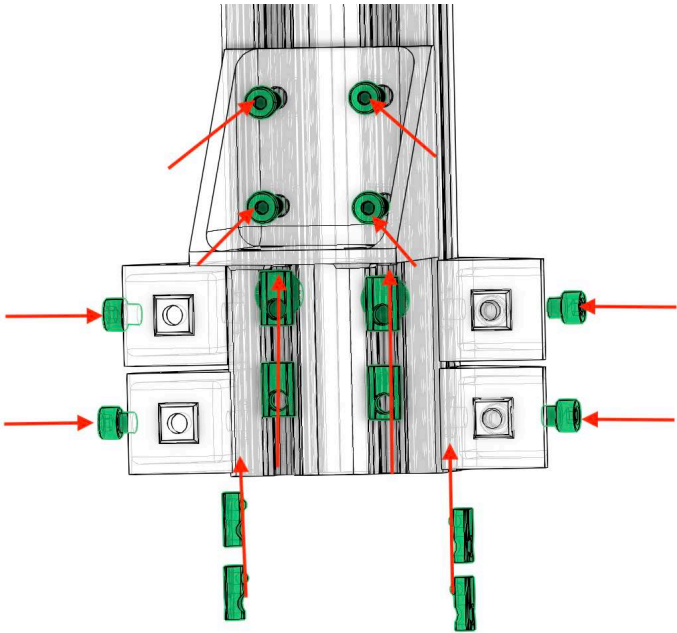
8x



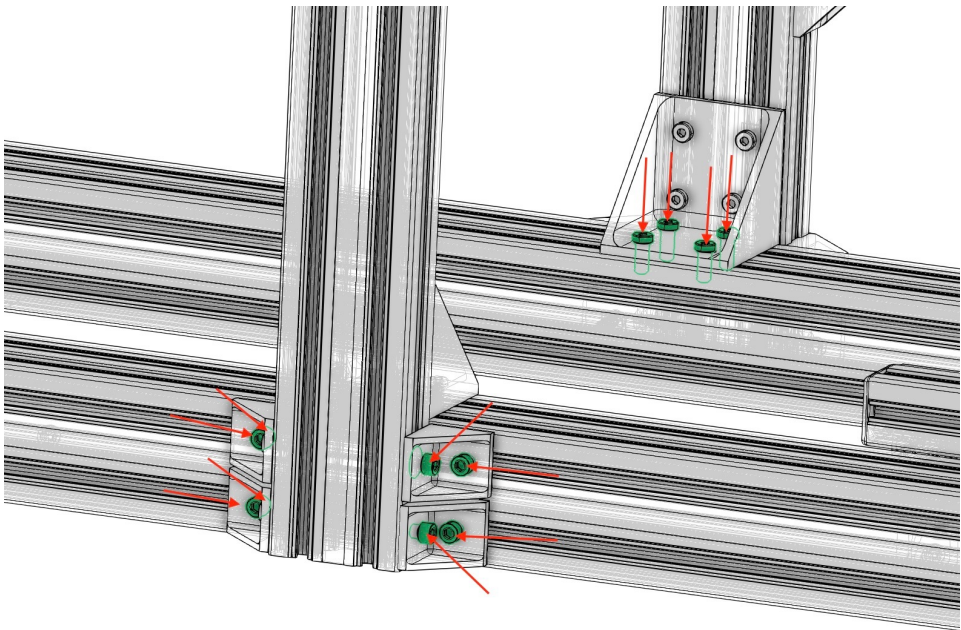
M12 Washer



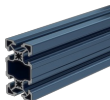
1



2



2 x



ST-EXT-002-0720

2 x



9090 Corner Bracket

8 x



4545 Corner Bracket

32 x



18mm M8 Bolt

32 x

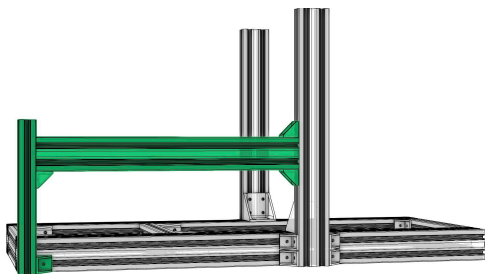


M8 T-Nut

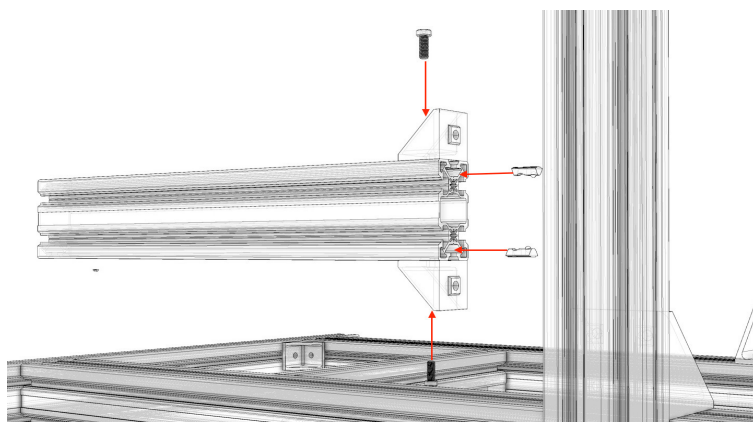


## Step 5: Attach side shifter mount \*\*Optional

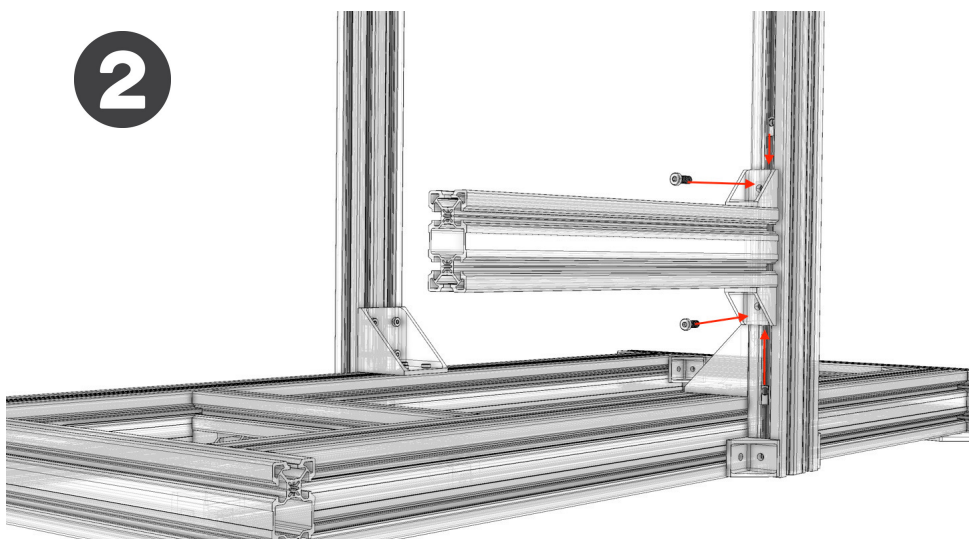
## Pro-Motion Assembly Instructions



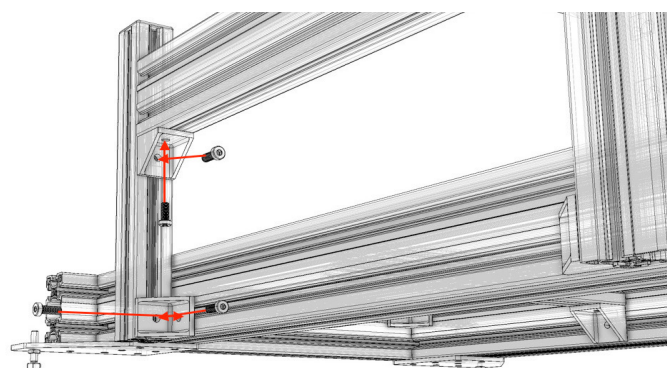
1



2



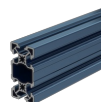
3



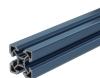
4 x



1 x



1 x



8 x



8 x



4545 Corner Bracket

ST-EXT-002-0585

ST-EXT-001-0405

M8 T-Nut

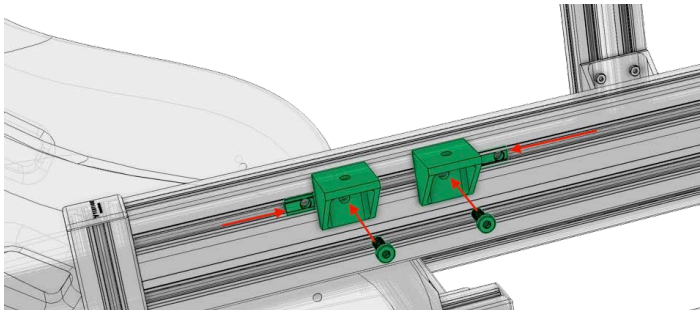
18mm M8 Bolt



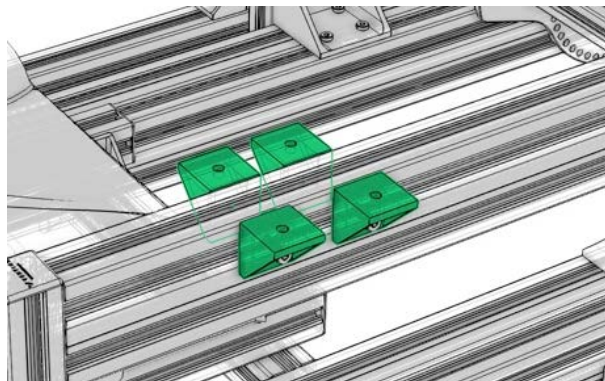


## FANATEC SIDE MOUNT

1

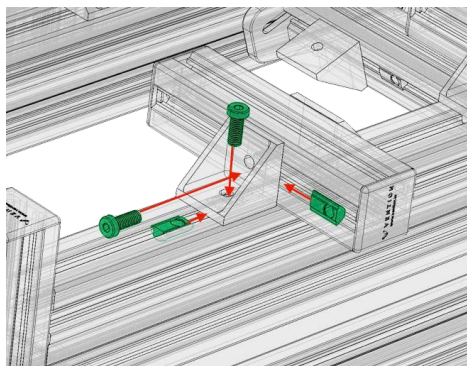


2

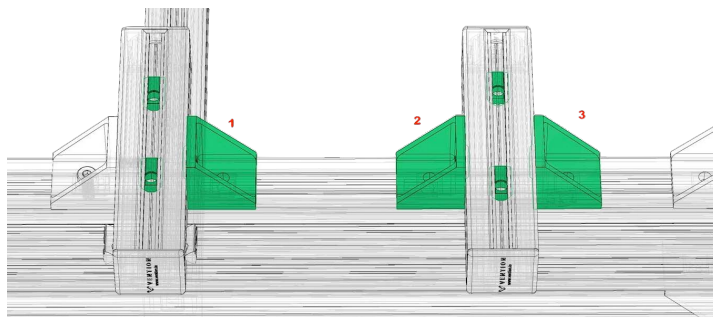


## DELUXE SIDE MOUNT

1



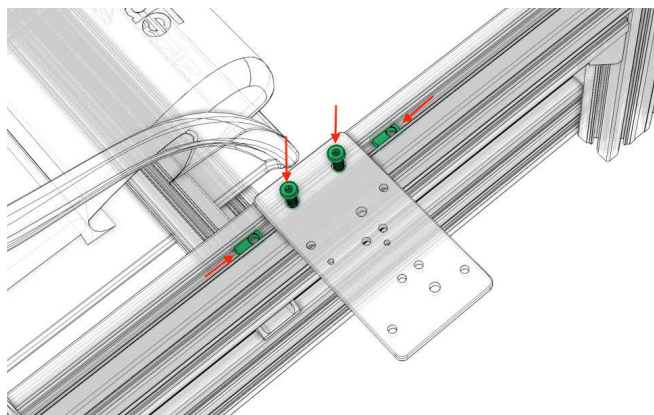
2



Repeat step 1 for the remaining 4 brackets. Add 4 t-nuts into the slots of the 180mm profiles to match with the hole locations of your shifter (or other).

1

## WITH SHIFTER PLATE



2 x



2 x



## FANATEC SIDE MOUNT

4 x



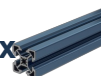
4 x



4 x



2 x



4 x



8 x



8 x



4545 Corner Bracket

18mm M8 Bolt

M8 T-Nut

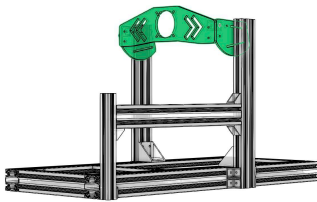
ST-EXT-001-0180

4545 Corner Bracket

18mm M8 Bolt

M8 T-Nut

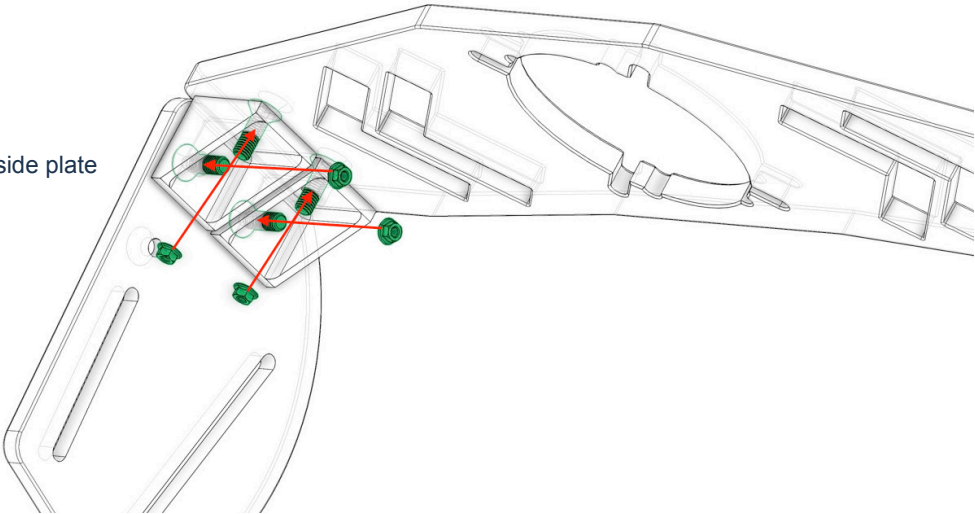




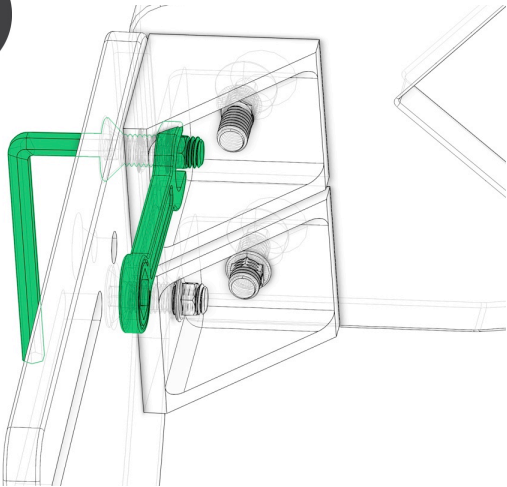
1

30mm ibolt nto front Plate

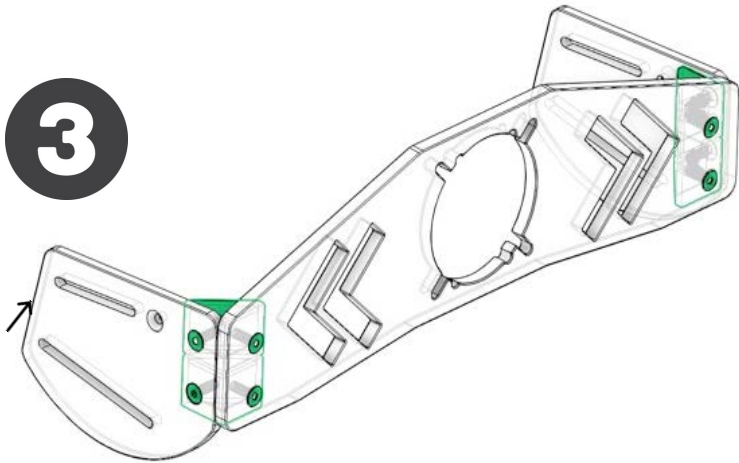
25mm bolt into side plate



2



3



1 x



MT-WH-001

1 x



MT-WH-002

1 x



MT-FW-001

8 x



HW-FN-008-0003

8x

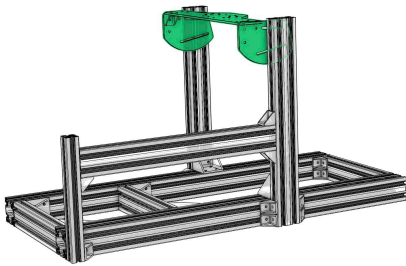


HW-FN-015-0030/25

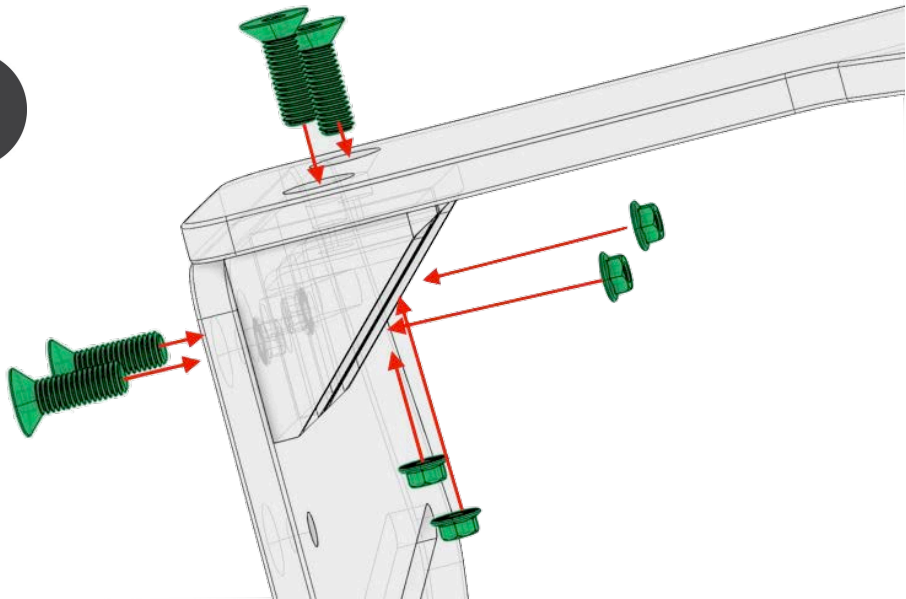
4 x



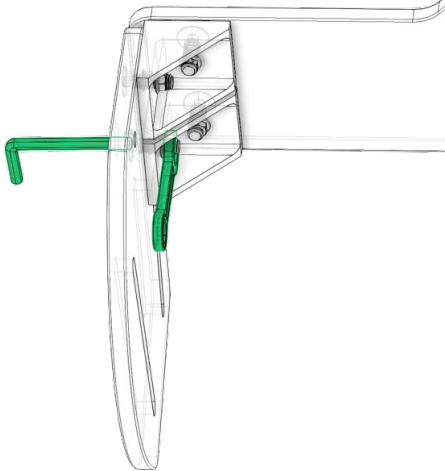
HW-CB-4545-001



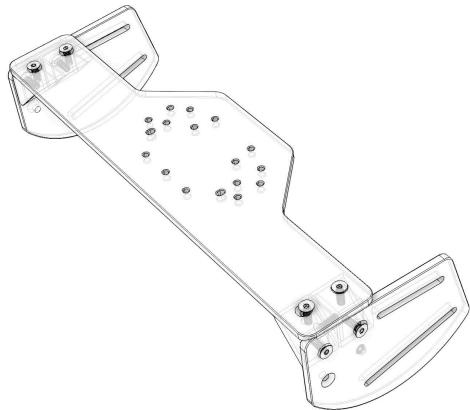
1



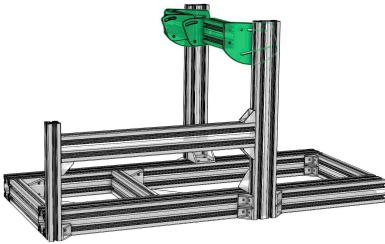
2



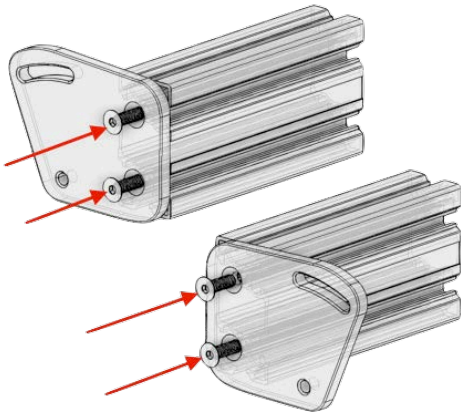
3



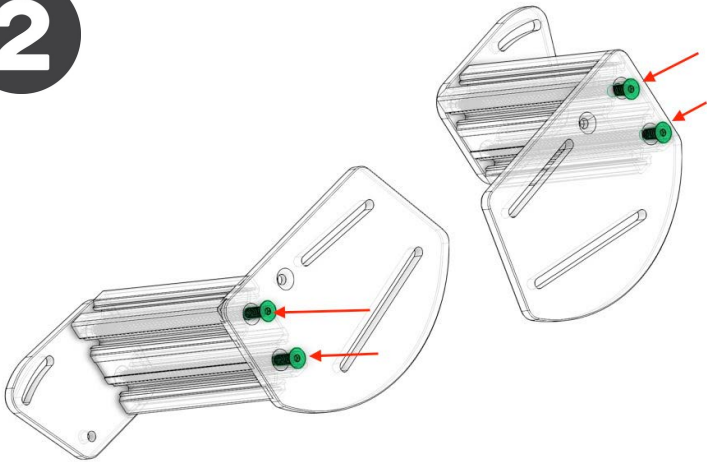
- |     |           |     |           |     |           |     |                |     |                |     |                |
|-----|-----------|-----|-----------|-----|-----------|-----|----------------|-----|----------------|-----|----------------|
| 1 x |           | 1 x |           | 1 x |           | 8 x |                | 8 x |                | 4 x |                |
|     | HW-WD-001 |     | HW-FN-001 |     | HW-FN-002 |     | HW-FN-008-0003 |     | HW-FN-015-0025 |     | HW-CB-4545-001 |



1

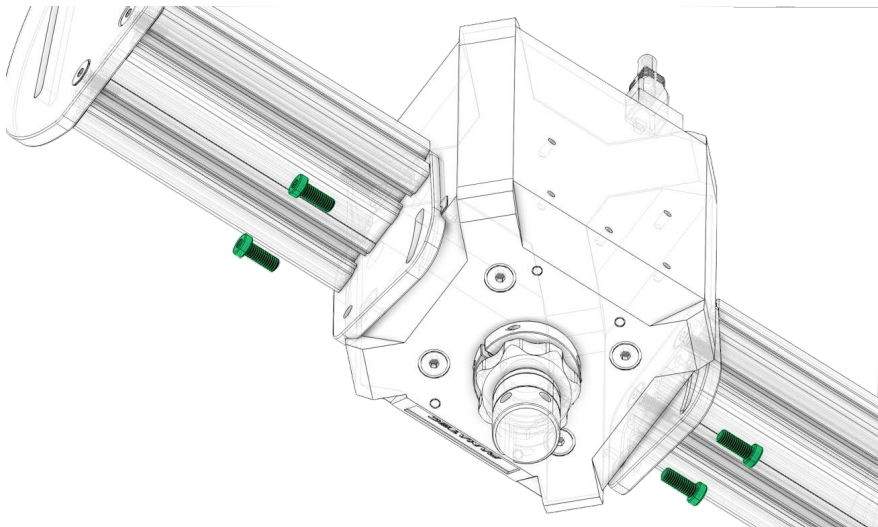


2



do step 3 after 1 / 2 om the following page

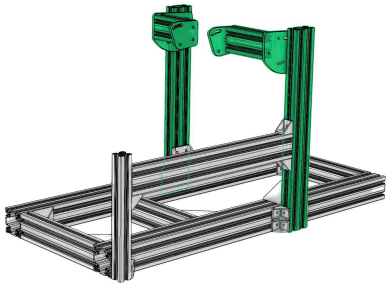
3



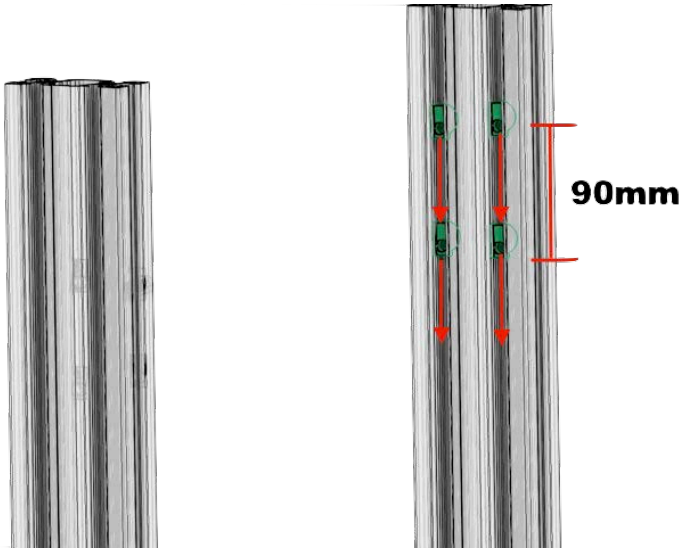
- |  |   |     |   |     |   |     |   |     |  |     |   |     |   |
|--|---|-----|---|-----|---|-----|---|-----|--|-----|---|-----|---|
| 1 x  |  | 1 x |  | 1 x |  | 1 x |  | 2 x |  | 8 x |  | 4 x |  |
| <div>MT-WH-001      MT-WH-002      MT-PD-001      MT-PD-002      ST-EXT-002-0187      HW-FN-015-0025      HW-FN-003-0020</div> |   |     |   |     |   |     |   |     |  |     |   |     |   |



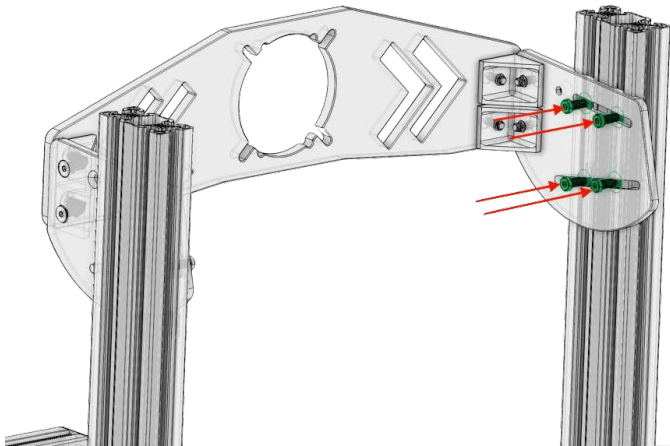
Step 7: Attach Wheel Mount to Uprights



1



2



8 x



20/22mm M8 Bolt

8 x



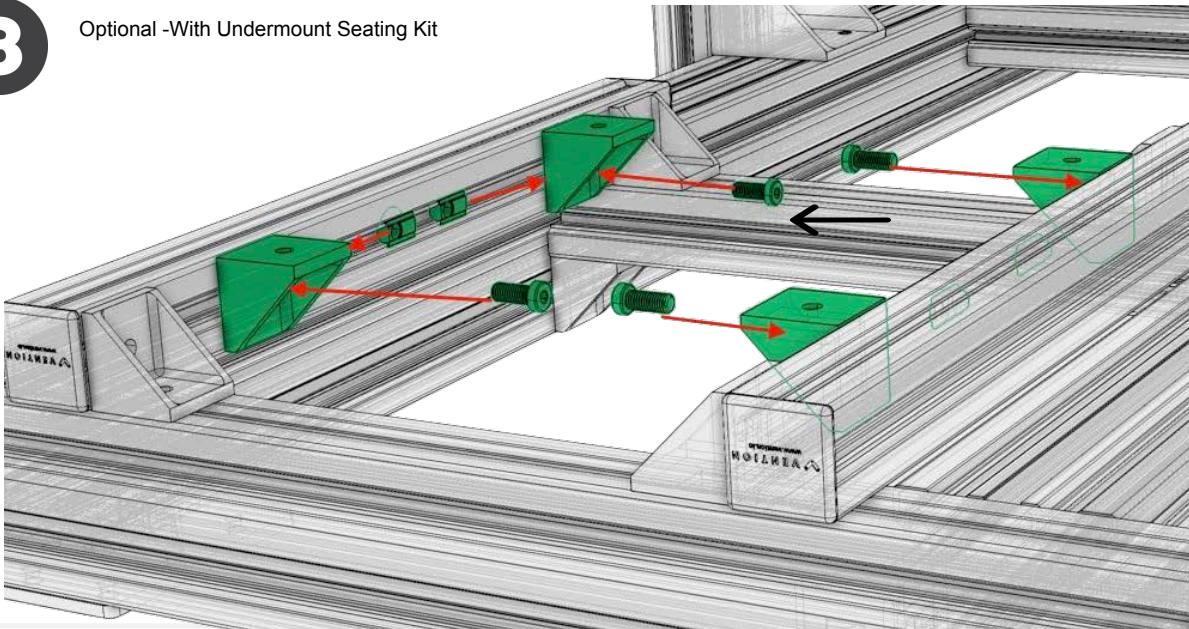
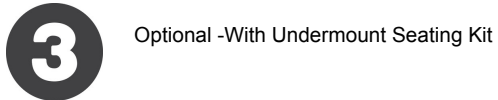
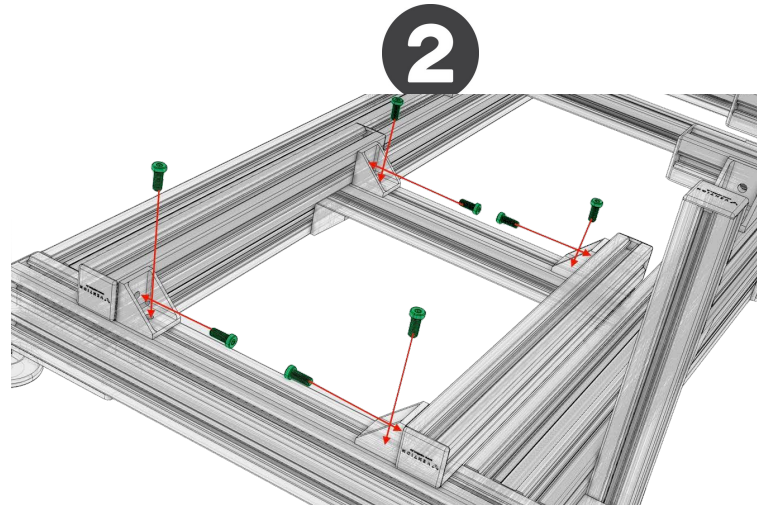
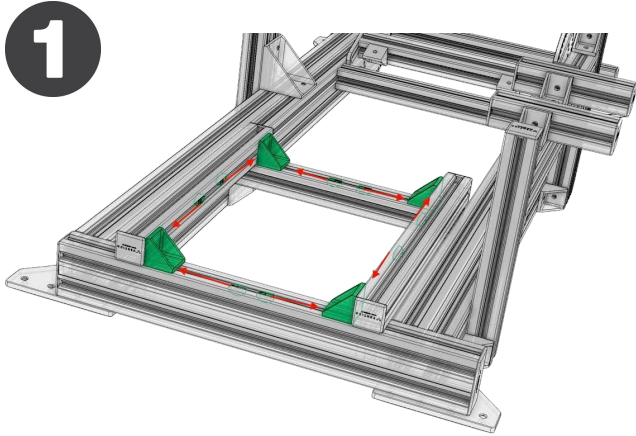
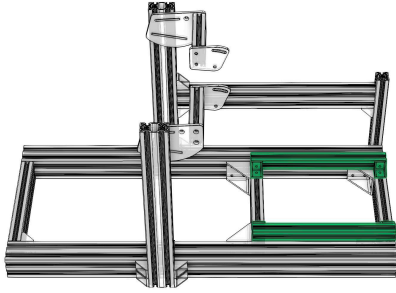
M8 T-nut





## Step 8: Seat Rails Assembly

## Pro-Motion Assembly Instructions



ST-EXT-001-0495

12 x



18mm M8 Bolt

12 x



M8 t-Nut

4 x



4545 Corner Bracket

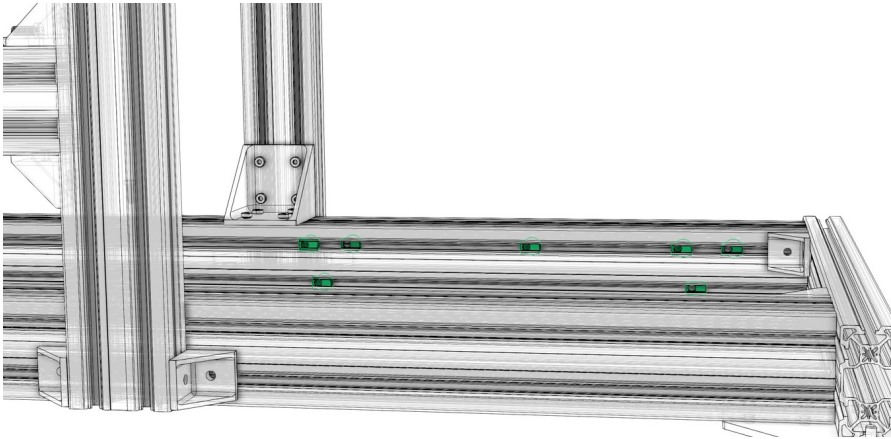
The pedal plates can be mounted either freestyle (step 7c) or using the center hole as a pivot if you want to easily rotate your pedal angle.



## Step 9 Pedal Mount Assembly - Pivot Point Method

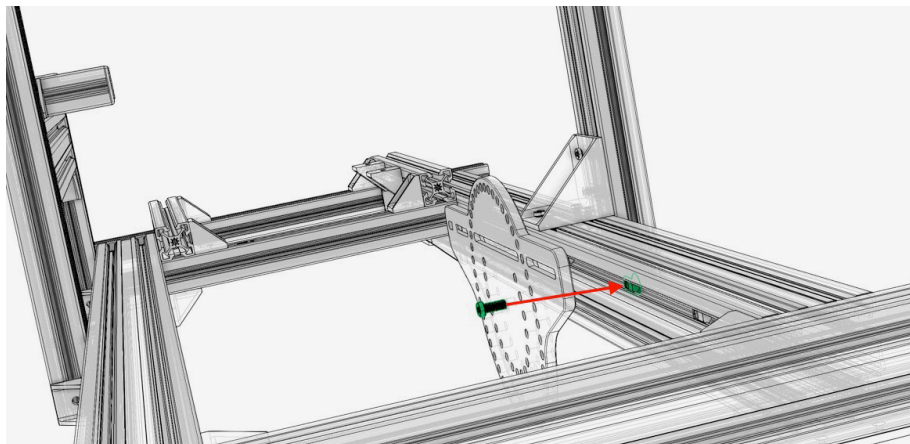
## Pro-Motion Assembly Instructions

1



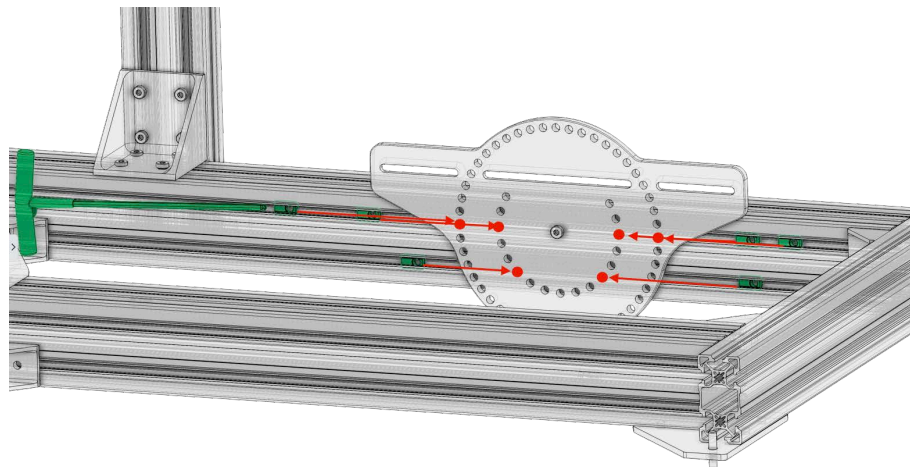
Place one T-nut in the center top slot with 1 on each side 12 inches from the center T-nut

2



Align the center T-nut with the center hole of the the pedal mount and tighten with a screw

3



Slide in the remaining T-nuts so that they align with the red circles as indicated in the photo.

\*\*Repeat the same steps for the opposite side.



2 x



2 x



14 x

MT-PP-001

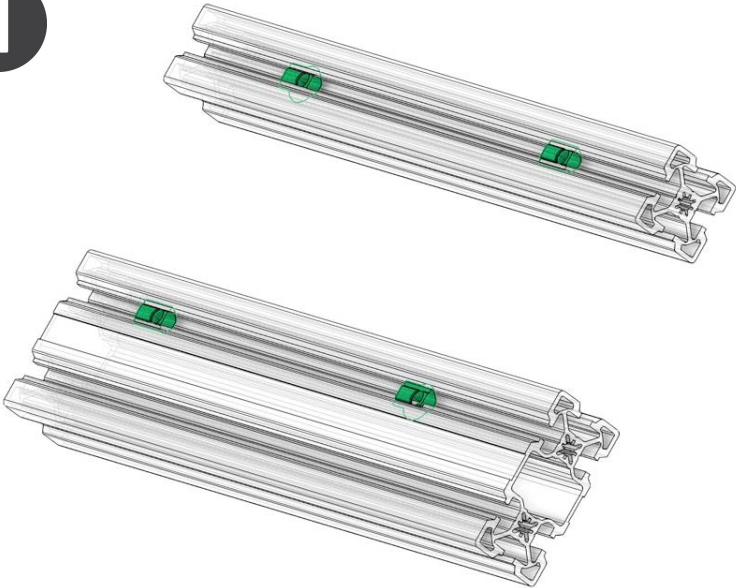
20/22mm M8 Bolt

M8 T-Nut



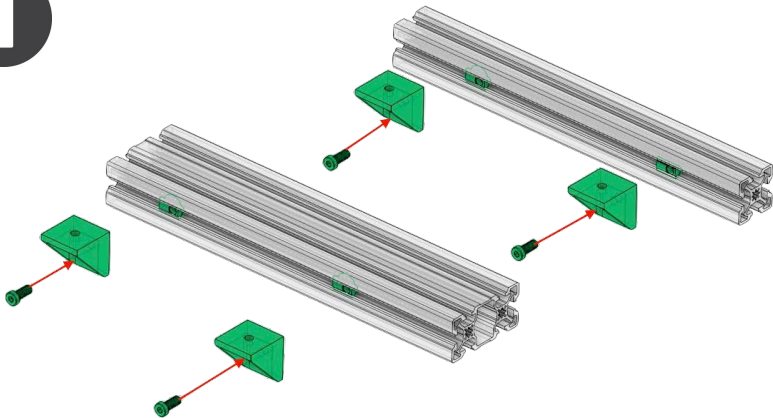
Step 9a: Install Spreader Profiles

1



For pedals with a through hole capable of mounting from above

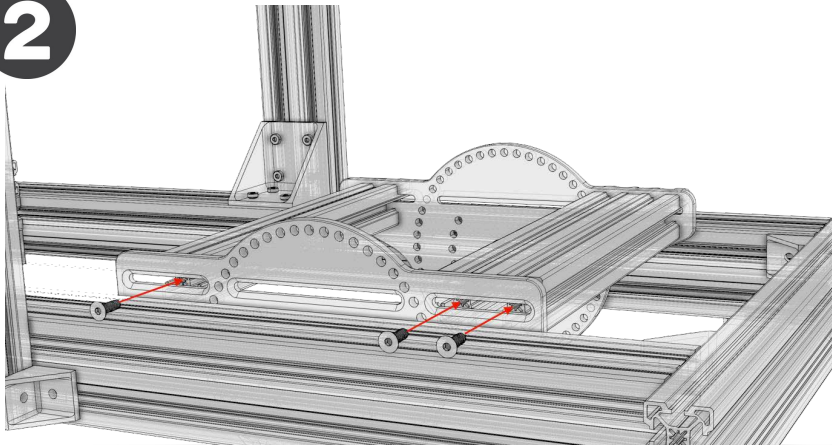
1



OPTIONAL WITH PURCHASE OF MOUNTING KIT

For pedals that mount upwards, use the provided 4 x corner brackets

2



Align the 2 spreader bars into the slots as in the photo. Secure a flathead screw into center hole of each profile. Leave the 45x45 profile slightly loose as it might need to be adjusted to fit your pedal set.

4 x



20mm M8 Bolt

4 x



M8 T-Nut

4 x



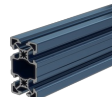
4545 Corner Bracket

1 x



ST-EXT-001-0385

1 x



ST-EXT-002-0385

6 x

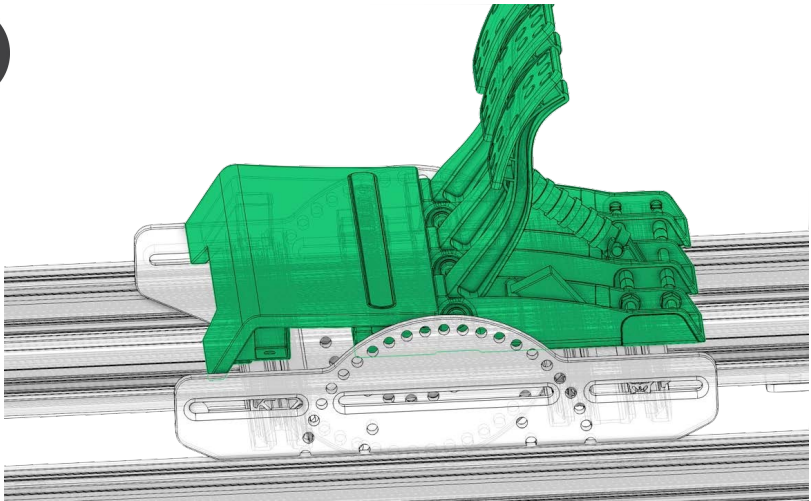


24mm M8 Flat Head



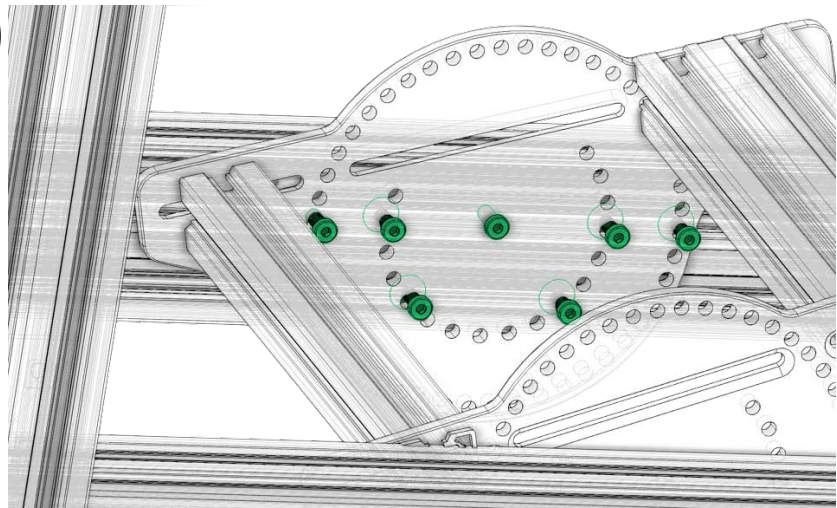


1



Place your pedals set onto the pedal mount. Adjust the 45x45 profile by sliding it forward/backward so that all mounting positions are aligned. Once aligned, remove pedal set and tighten 45x45 profile.

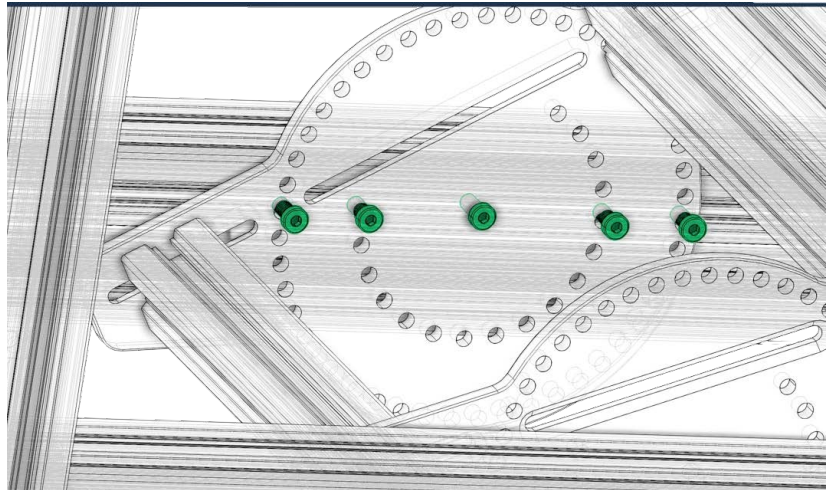
2



Center screw acts as a pivot.

Keep in place when rotating and adjust positions of the other screws.

1 outside hole rotation results in 5 possible mounting screws.



2 outer hole rotation results in 7 possible mounting screws

Please note that only 3 screws are needed for the pedal plate to be secure in the cockpit.

12 x

20/22mm M8 Bolt





*To mount your pedals using any hole combination, angle, and height that you choose, follow the same steps above changing only the t-nut layout from step #4 from page 12 and screw positions from steps 2 & 3 from page 14.*

Examples of custom freestyle mounting options.

