

CERTIFICATE OF ANALYSIS



Customer: Hombres Distribution
130 McCormick Ave
Costa Mesa, CA 92626

Batch #: 6085393037920
Laboratory Number: ATL-17273

Report Issue Date: 12/14/2023

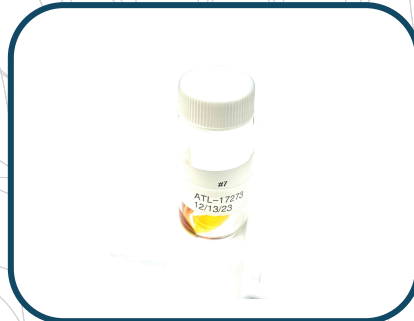
Order Date: 12/13/2023

Analysis Date: 12/14/2023

Sample Description:

Sugar 2.2g Xclusive- BloodOrange Creamsicle

Unit Weight: 2.2g / distillate



Extraction Technician: LL

Analytical Chemist: LL

Kim Dang
Laboratory Manager

CANNABINOID PROFILE- EXPANDED

| Analyte | LOQ (mg/g) | Results mg/distillate | % |
|---------|------------|-----------------------|---|
|---------|------------|-----------------------|---|

| | | | |
|------------|--------|----------|--------|
| CBDV-A | <0.011 | N/D | N/D |
| CBDV | <0.011 | N/D | N/D |
| CBD-A | <0.008 | N/D | N/D |
| CBG-A | <0.008 | N/D | N/D |
| CBG | <0.007 | N/D | N/D |
| CBD | <0.014 | N/D | N/D |
| THCV | <0.008 | N/D | N/D |
| D8-THCV | <0.004 | N/D | N/D |
| THCV-A | <0.005 | N/D | N/D |
| CBN | <0.011 | 11.924 | 0.542 |
| D9-THC | <0.014 | N/D | N/D |
| D8-THC | <0.005 | 1791.746 | 81.443 |
| 9S-D10-THC | <0.005 | N/D | N/D |
| 9R-D10-THC | <0.002 | N/D | N/D |

| Analyte | LOQ (mg/g) | Results mg/distillate | % |
|---------|------------|-----------------------|---|
|---------|------------|-----------------------|---|

| | | | |
|--------------|--------|--------|-------|
| 9S-HHC | <0.009 | N/D | N/D |
| 9R-HHC | <0.013 | N/D | N/D |
| CBC | <0.009 | N/D | N/D |
| CBC-A | <0.005 | N/D | N/D |
| THC-A | <0.005 | 26.092 | 1.186 |
| D9-THCH | <0.006 | N/D | N/D |
| D8-THCH | <0.009 | N/D | N/D |
| D9-THCP | <0.009 | 57.772 | 2.626 |
| D8-THCP | <0.010 | N/D | N/D |
| D8-THCO | <0.007 | N/D | N/D |
| D9-THCO | <0.005 | N/D | N/D |
| 9S-HHCP | <0.010 | N/D | N/D |
| 9R-HHCP | <0.010 | N/D | N/D |
| 11-OH-D8-THC | <0.005 | N/D | N/D |

| Analyte | LOQ (mg/g) | Results mg/distillate | % |
|---------|------------|-----------------------|---|
|---------|------------|-----------------------|---|

| | | | |
|----------|--------|-----|-----|
| 1S-H4CBD | <0.012 | N/D | N/D |
| 1R-H4CBD | <0.025 | N/D | N/D |
| D9-THCB | <0.004 | N/D | N/D |
| D8-THCB | <0.007 | N/D | N/D |

| | | |
|-----------------------|---------------|------|
| Max Active THC | mg/distillate | % |
| | 22.88 | 1.04 |

| | | |
|-----------------------|---------------|-----|
| Max Active CBD | mg/distillate | % |
| | N/D | N/D |

| | | |
|----------------------------------|---------------|-------|
| Total Active Cannabinoids | mg/distillate | % |
| | 1884.32 | 85.65 |

| | | |
|---------------------------|---------------|-------|
| Total Cannabinoids | mg/distillate | % |
| | 1887.53 | 85.80 |

NOTES:

Cannabidiol (CBD) Cannabidiol (CBD) Cannabidiol (CBD) Cannabidiol (CBD) Cannabidiol (CBD) Cannabidiol (CBD)
 Tetrahydrocannabinol (THC) Tetrahydrocannabinol (THC) Tetrahydrocannabinol (THC) Tetrahydrocannabinol (THC) Tetrahydrocannabinol (THC) Tetrahydrocannabinol (THC)
 9S-Delta-10-Tetrahydrocannabinol (9S-D10-THC) 9R-Delta-10-Tetrahydrocannabinol (9R-D10-THC) 9S-Hexahydrocannabinol (9S-HHC) 9R-Hexahydrocannabinol (9R-HHC) 11-Hydroxy-THC (11-OH-D8-THC)
 Cannabichromene (CBC) Cannabichromene (CBC) Cannabichromene (CBC) Cannabichromene (CBC) Cannabichromene (CBC) Cannabichromene (CBC)
 Cannabidiol (CBD) Cannabidiol (CBD) Cannabidiol (CBD) Cannabidiol (CBD) Cannabidiol (CBD) Cannabidiol (CBD)
 Cannabidiol (CBD) Cannabidiol (CBD) Cannabidiol (CBD) Cannabidiol (CBD) Cannabidiol (CBD) Cannabidiol (CBD)

Document ID: ATL-225A Revision: 03 Effective Date: 10/3/2023

Reporting Limits will vary based on sample extraction weight used for the analysis. Accurate Test Lab, LLC utilizes based upon traceable Reference Standards and Certified Reference Material to calibrate analytical instruments along with proven analytical methods. The methods are applied in the most ethical manner following good laboratory practice guidelines. The results of this report are based solely on the sample submitted and cannot be reproduced. Results only apply to samples within COA as received.

Certificate of Analysis shall not be reproduced except in full without approval of Accurate Test Lab, LLC.

N/D: Not Detected LOQ: Limit of quantification

Analysis Method: ATL-LCM-001. Accurate Test Lab estimated expanded uncertainty is 13% as per in VALIDATION AND VERIFICATION OF ATL-LCM-001 (ATL-500A)

