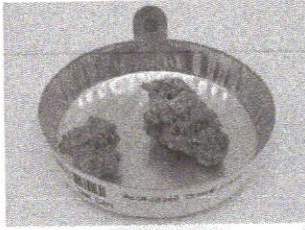


**HSP**  
12480 NW 25th Street Suite #115  
Miami, FL 33182

Sample: 05-11-2023-33368  
Sample Received: 05/11/2023;  
Report Created: 05/12/2023; Expires: 05/11/2024

Blue Dream Pie 20230509-BDP  
Plant, Flower - Cured



**23.786 %**  
Total THC

**0.288 %**  
Δ-9 THC

**28.342 %**  
Total Cannabinoids

**<LOQ %**  
Total CBD

## Cannabinoids

Complete

(Testing Method: HPLC, CON-P-3000)  
Date Tested: 05/11/2023

Analyte	LOD	LOQ	Mass	Mass	
	%	%	%	mg/g	
Δ-8-Tetrahydrocannabinol (Δ-8 THC)	0.0495	0.0743	ND	ND	
Δ-9-Tetrahydrocannabinol (Δ-9 THC)	0.0495	0.0743	0.288	2.880	
Δ-9-Tetrahydrocannabinolic Acid (THCA-A)	0.0495	0.0743	26.793	267.931	
Δ-9-Tetrahydrocannabinophorol (Δ-9-THCP)	0.0495	0.0743	ND	ND	
Δ-9-Tetrahydrocannabivarin (Δ-9-THCV)	0.0495	0.0743	ND	ND	
Δ-9-Tetrahydrocannabivarinic Acid (Δ-9-THCVA)	0.0495	0.0743	0.076	0.760	
R-Δ-10-Tetrahydrocannabinol (R-Δ-10-THC)	0.0495	0.0743	ND	ND	
S-Δ-10-Tetrahydrocannabinol (S-Δ-10-THC)	0.0495	0.0743	ND	ND	
9R-Hexahydrocannabinol (9R-HHC)	0.0495	0.0743	ND	ND	
9S-Hexahydrocannabinol (9S-HHC)	0.0495	0.0743	ND	ND	
Tetrahydrocannabinol Acetate (THCO)	0.0495	0.0743	ND	ND	
Cannabidiol (CBD)	0.0495	0.0743	ND	ND	
Cannabidiolic Acid (CBDA)	0.0406	0.0743	<LOQ	<LOQ	
Cannabigerol (CBG)	0.0406	0.0743	<LOQ	<LOQ	
Cannabigerolic Acid (CBGA)	0.0495	0.0743	1.185	11.851	
Cannabinol (CBN)	0.0495	0.0743	ND	ND	
Cannabinolic Acid (CBNA)	0.0495	0.0743	ND	ND	
Cannabichromene (CBC)	0.0495	0.0743	ND	ND	
Cannabichromenic Acid (CBCA)	0.0495	0.0743	<LOQ	<LOQ	
<b>Total</b>			<b>28.342</b>	<b>283.422</b>	

Total THC = THCa \* 0.877 + Δ9-THC; Total CBD = CBDA \* 0.877 + CBD; LOQ = Limit of Quantitation; ND = Not Detected.

Total THC Measurement of Uncertainty: ± 0.050%  
Total CBD Measurement of Uncertainty: ± 2.000%  
THCO potency analysis does not designate quantitative specificity of Δ-8-THCO and Δ-9-THCO isomers



New Bloom Labs  
6121 Heritage Park Drive, A500  
Chattanooga, TN 37416  
(844) 837-8223  
TN DEA#: RN0563975  
ANAB Testing Laboratory (AT-2868): ISO/IEC  
17025:2017

*Natalie Siracusa*  
Natalie Siracusa  
Laboratory Director

Powered by  
reLIMS  
info@relims.com



HSP

Sample 627-071423-014

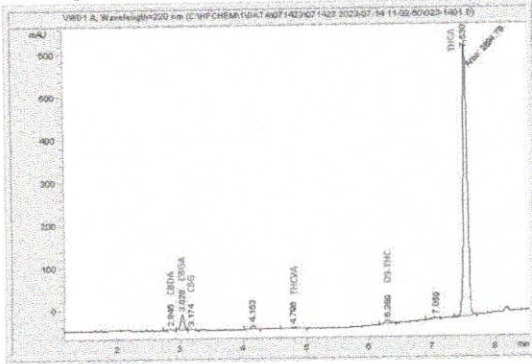
Green Crack

Sample Submitted: 07-14-2023; Report Date: 07-18-2023

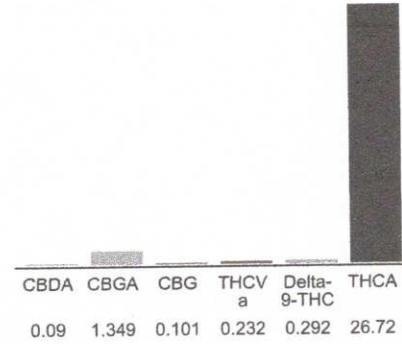
**Green Crack**

Plant Material: Flower

**Chromatogram**



**Cannabinoid Profile**



**Cannabinoid Profile by HPLC**

**0.29%**  
Delta-9-THC

**0.00%**  
CBD

**28.78%**  
Total Cannabinoids

Cannabinoid	% wt	mg/g
CBDA	0.09	0.9
CBGA	1.349	13.49
CBG	0.101	1.01
THCva	0.232	2.32
Delta-9-THC	0.292	2.92
THCA	26.72	267.2
<b>Total Cannabinoids</b>	<b>28.78</b>	<b>287.8</b>
<b>Calculated Total THC</b>	<b>23.73</b>	<b>237.25</b>
<b>Calculated CBD Yield</b>	<b>0.08</b>	<b>0.79</b>

Calculated Total THC = Delta-9-THC + 0.877 \* THCA  
Calculated Maximum CBD Yield = CBD + 0.877 \* CBDA

**Marin Analytics, LLC**  
250 Bel Marin Keys Blvd, Suite D4  
Novato, CA 94949

833-321-TEST / info@marinanalytics.com

*Sara Biancalana*

**Sara Biancalana**  
Chief Scientist

This sample has been tested by Marin Analytics, LLC using valid testing methodologies and a quality system. Values reported relate only to the sample tested. Marin Analytics, LLC makes no claims as to the efficacy, safety, or other risks associated with any detected or non-detected levels of any compounds reported herein. This Certificate shall not be reproduced except in full without the written approval of Marin Analytics, LLC. Copyright 2023 Marin Analytics, LLC All Rights Reserved.



HSP

Sample 627-073123-032

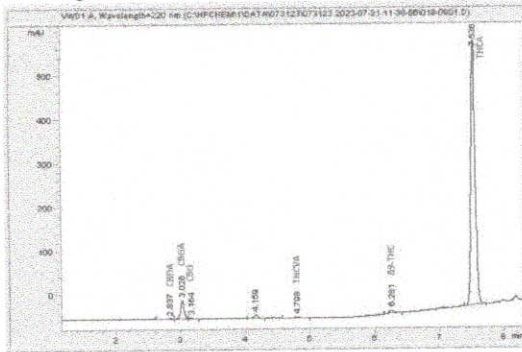
Jello Cake

Sample Submitted: 07-31-2023; Report Date: 08-03-2023

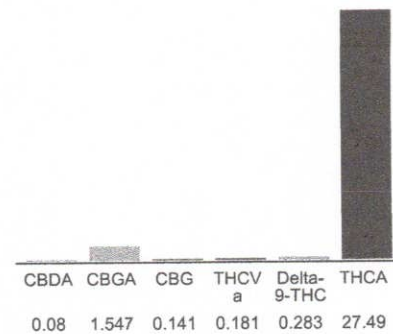
**Jello Cake**

Plant Material: Flower

**Chromatogram**



**Cannabinoid Profile**



**Cannabinoid Profile by HPLC**

**0.28%**  
Delta-9-THC

**0.00%**  
CBD

**29.72%**  
Total Cannabinoids

Cannabinoid	% wt	mg/g
CBDA	0.08	0.8
CBGA	1.547	15.47
CBG	0.141	1.41
THCVa	0.181	1.81
Delta-9-THC	0.283	2.83
THCA	27.49	274.9
<b>Total Cannabinoids</b>	<b>29.72</b>	<b>297.2</b>
<b>Calculated Total THC</b>	<b>24.39</b>	<b>243.92</b>
<b>Calculated CBD Yield</b>	<b>0.07</b>	<b>0.70</b>

Calculated Total THC = Delta-9-THC + 0.877 \* THCA  
Calculated Maximum CBD Yield = CBD + 0.877 \* CBDA

**Marin Analytics, LLC**  
250 Bel Marin Keys Blvd, Suite D4  
Novato, CA 94949

833-321-TEST / info@marinanalytics.com

*Sara Biancalana*

**Sara Biancalana**  
Chief Scientist

This sample has been tested by Marin Analytics, LLC using valid testing methodologies and a quality system. Values reported relate only to the sample tested. Marin Analytics, LLC makes no claims as to the efficacy, safety, or other risks associated with any detected or non-detected levels of any compounds reported herein. This Certificate shall not be reproduced except in full without the written approval of Marin Analytics, LLC. Copyright 2023 Marin Analytics, LLC All Rights Reserved.



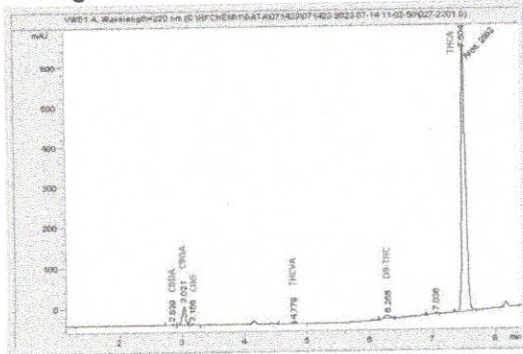
Octane Gas

Sample Submitted: 07-14-2023; Report Date: 07-19-2023

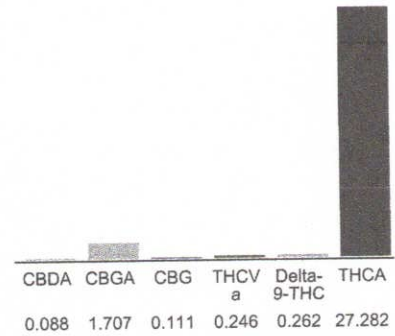
Octane Gas

Plant Material: Flower

Chromatogram



Cannabinoid Profile



Cannabinoid Profile by HPLC

**0.26%**  
Delta-9-THC

**0.00%**  
CBD

**29.70%**  
Total Cannabinoids

Cannabinoid	% wt	mg/g
CBDA	0.088	0.88
CBGA	1.707	17.07
CBG	0.111	1.11
THCVa	0.246	2.46
Delta-9-THC	0.262	2.62
THCA	27.28	272.82
<b>Total Cannabinoids</b>	<b>29.70</b>	<b>297.0</b>
<b>Calculated Total THC</b>	<b>24.19</b>	<b>241.88</b>
<b>Calculated CBD Yield</b>	<b>0.08</b>	<b>0.77</b>

Calculated Total THC = Delta-9-THC + 0.877 \* THCA  
Calculated Maximum CBD Yield = CBD + 0.877 \* CBDA

**Marin Analytics, LLC**  
250 Bel Marin Keys Blvd, Suite D4  
Novato, CA 94949

833-321-TEST / info@marinanalytics.com

*Sara Biancalana*  
**Sara Biancalana**  
Chief Scientist

This sample has been tested by Marin Analytics, LLC using valid testing methodologies and a quality system. Values reported relate only to the sample tested. Marin Analytics, LLC makes no claims as to the efficacy, safety, or other risks associated with any detected or non-detected levels of any compounds reported herein. This Certificate shall not be reproduced except in full without the written approval of Marin Analytics, LLC. Copyright 2023 Marin Analytics, LLC All Rights Reserved.



HSP

Sample 627-073123-029

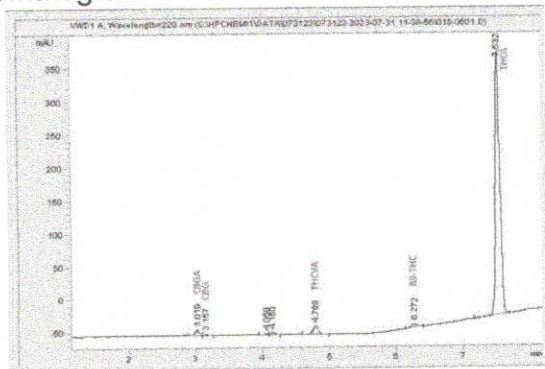
Sherbet

Sample Submitted: 07-31-2023; Report Date: 08-03-2023

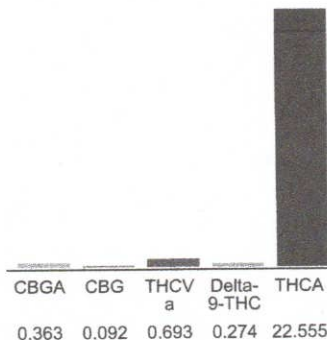
**Sherbet**

Plant Material: Flower

**Chromatogram**



**Cannabinoid Profile**



**Cannabinoid Profile by HPLC**

**0.27%**  
Delta-9-THC

**0.00%**  
CBD

**23.98%**  
Total Cannabinoids

Cannabinoid	% wt	mg/g
CBGA	0.363	3.63
CBG	0.092	0.92
THCVa	0.693	6.93
Delta-9-THC	0.274	2.74
THCA	22.56	225.55
<b>Total Cannabinoids</b>	<b>23.98</b>	<b>239.8</b>
<b>Calculated Total THC</b>	<b>20.05</b>	<b>200.55</b>
<b>Calculated CBD Yield</b>	<b>0.00</b>	<b>0.00</b>

Calculated Total THC = Delta-9-THC + 0.877 \* THCA  
Calculated Maximum CBD Yield = CBD + 0.877 \* CBDA

**Marin Analytics, LLC**  
250 Bel Marin Keys Blvd, Suite D4  
Novato, CA 94949  
833-321-TEST / info@marinanalytics.com

*Sara Biancalana*  
**Sara Biancalana**  
Chief Scientist

This sample has been tested by Marin Analytics, LLC using valid testing methodologies and a quality system. Values reported relate only to the sample tested. Marin Analytics, LLC makes no claims as to the efficacy, safety, or other risks associated with any detected or non-detected levels of any compounds reported herein. This Certificate shall not be reproduced except in full without the written approval of Marin Analytics, LLC. Copyright 2023 Marin Analytics, LLC All Rights Reserved.