

LAGM Series - Leisure

LAGM-130 (12V130AH)

Specification

| | | |
|----------------------------------|--|-------------------------------|
| Nominal Voltage | 12V | |
| Nominal Capacity(100HR) | 130.0AH | |
| Dimension | Length | 330±2mm (12.99 inches) |
| | Width | 173± 2mm (6.81 inches) |
| | Container Height | 212± 2mm (8.35 inches) |
| | Total Height (with Terminal) | 220± 2mm (8.66 inches) |
| Approx Weight | Approx 28.0 Kg (61.1 lbs) | |
| Terminal | T11 | |
| Container Material | ABS | |
| Rated Capacity | 130.0 AH/1.3A | (100hr ,1.80V/cell,25°C/77°F) |
| | 117.0 AH/5.85A | (20hr ,1.80V/cell,25°C/77°F) |
| | 104.0 AH/10.4A | (10hr,1.80V/cell,25°C/77°F) |
| | 87.0 AH/17.4A | (5hr,1.75V/cell,25°C/77°F) |
| | 60.8 AH/60.8A | (1hr,1.60V/cell,25°C/77°F) |
| Max. Discharge Current | 1080A (5s) | |
| Internal Resistance | Approx 5mΩ | |
| Operating Temp.Range | Discharge | -15~50°C (5~122°F) |
| | Charge | 0~40°C (32~104°F) |
| | Storage | -15~40°C (5~104°F) |
| Nominal Operating Temp. Range | 25±3°C (77±5°F) | |
| Cycle Use | Initial Charging Current less than 27.0A.Voltage | |
| | 14.4V~15.0V at 25°C (77°F) Temp. Coefficient -30mV/°C | |
| Standby Use | No limit on Initial Charging Current Voltage | |
| | 13.5V~13.8V at 25°C(77°F)Temp. Coefficient -20mV/°C | |
| Capacity affected by Temperature | 40°C (104°F) | 103% |
| | 25°C (77°F) | 100% |
| | 0°C (32°F) | 86% |
| Self Discharge | Leoch LPS series batteries may be stored for up to 6 months at 25°C(77°F) and then a freshening charge is required. For higher temperatures the time interval will be shorter. | |



Applications

- ◆ Solar power stations
- ◆ Telecommunications installations
- ◆ Measurement stations
- ◆ Pump systems
- ◆ Signal station
- ◆ Survey and Mapping system
- ◆ Emergency lighting
- ◆ Railway crossing
- ◆ Traffic lights
- ◆ Street lightening
- ◆ Lawn lamp
- ◆ Street signs
- ◆ SOS pillars
- ◆ Alarm installations
- ◆ Weekend cottage camping
- ◆ Caravans
- ◆ Boats or buoys



Constant Current Discharge (Amperes) at 25 °C (77°F)

| F.V/Time | 15min | 20min | 30min | 45min | 1h | 2h | 3h | 4h | 5h | 8h | 10h | 20h | 48h | 100h |
|------------|-------|-------|-------|-------|------|------|------|------|------|------|------|------|------|------|
| 1.85V/cell | 113.8 | 94.5 | 73.4 | 58.1 | 47.0 | 30.7 | 23.1 | 19.0 | 16.0 | 11.2 | 9.98 | 5.75 | 2.29 | 1.28 |
| 1.80V/cell | 126.1 | 103.9 | 79.2 | 61.7 | 49.6 | 32.6 | 24.4 | 19.9 | 16.8 | 11.7 | 10.4 | 5.85 | 2.33 | 1.30 |
| 1.75V/cell | 139.9 | 113.9 | 85.2 | 66.0 | 53.5 | 34.2 | 25.8 | 20.7 | 17.5 | 12.1 | 10.6 | 5.93 | 2.36 | 1.31 |
| 1.70V/cell | 152.8 | 124.4 | 93.6 | 68.9 | 56.5 | 36.0 | 27.0 | 21.6 | 18.2 | 12.5 | 10.9 | 6.03 | 2.39 | 1.33 |
| 1.65V/cell | 161.8 | 131.2 | 98.6 | 73.2 | 58.5 | 37.3 | 28.0 | 22.4 | 18.8 | 12.9 | 11.2 | 6.11 | 2.44 | 1.34 |
| 1.60V/cell | 177.4 | 142.5 | 104.8 | 75.9 | 60.8 | 38.8 | 28.9 | 23.1 | 19.5 | 13.2 | 11.4 | 6.19 | 2.48 | 1.35 |

Constant Power Discharge (Watts/cell) at 25 °C (77°F)

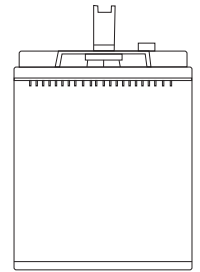
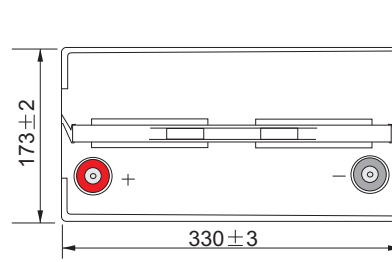
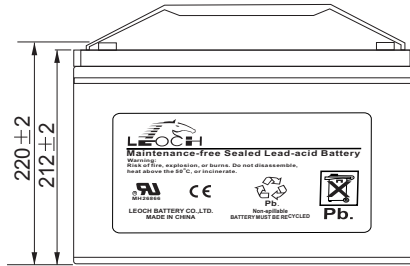
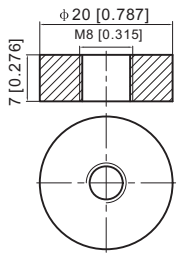
| F.V/Time | 15min | 20min | 30min | 45min | 1h | 2h | 3h | 4h | 5h | 8h | 10h | 20h | 48h | 100h |
|------------|-------|-------|-------|-------|-------|------|------|------|------|------|------|------|------|------|
| 1.85V/cell | 213.4 | 179.1 | 140.6 | 112.3 | 91.5 | 59.8 | 45.3 | 37.2 | 31.6 | 22.2 | 19.1 | 10.1 | 4.58 | 2.31 |
| 1.80V/cell | 233.4 | 194.1 | 149.4 | 117.8 | 95.7 | 63.2 | 47.5 | 38.8 | 33.0 | 23.2 | 19.9 | 10.4 | 4.64 | 2.35 |
| 1.75V/cell | 255.8 | 210.6 | 159.4 | 125.3 | 102.7 | 66.0 | 50.0 | 40.4 | 34.1 | 23.9 | 20.3 | 10.6 | 4.71 | 2.36 |
| 1.70V/cell | 275.6 | 228.3 | 174.2 | 130.4 | 108.1 | 69.4 | 52.3 | 42.0 | 35.4 | 24.7 | 20.9 | 10.8 | 4.76 | 2.39 |
| 1.65V/cell | 290.7 | 240.0 | 182.7 | 137.9 | 111.5 | 71.5 | 54.1 | 43.4 | 36.6 | 25.3 | 21.3 | 11.1 | 4.84 | 2.42 |
| 1.60V/cell | 312.2 | 256.8 | 192.1 | 141.5 | 114.8 | 74.0 | 55.6 | 44.5 | 37.7 | 25.9 | 21.8 | 11.3 | 4.91 | 2.44 |



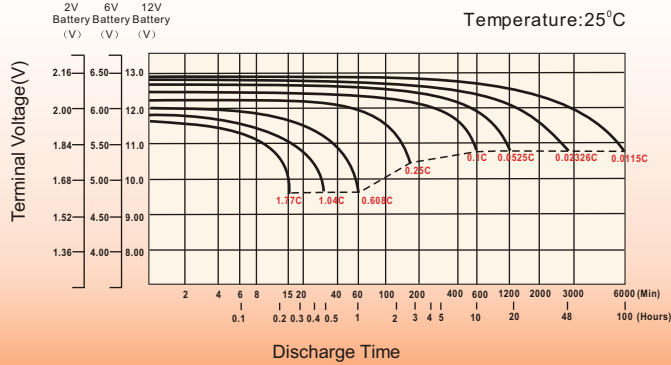
Dimensions

T11 Terminal

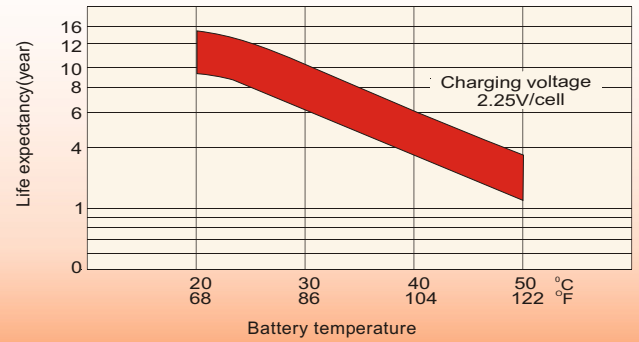
Unit: mm [inches]



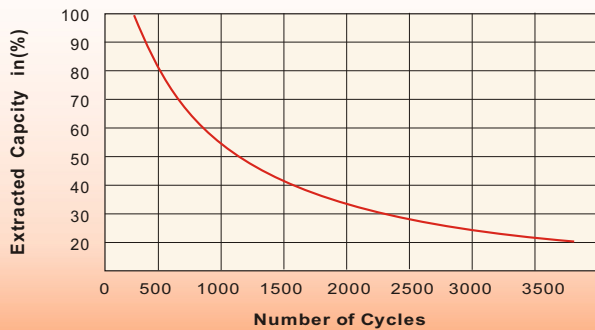
Discharge Characteristics



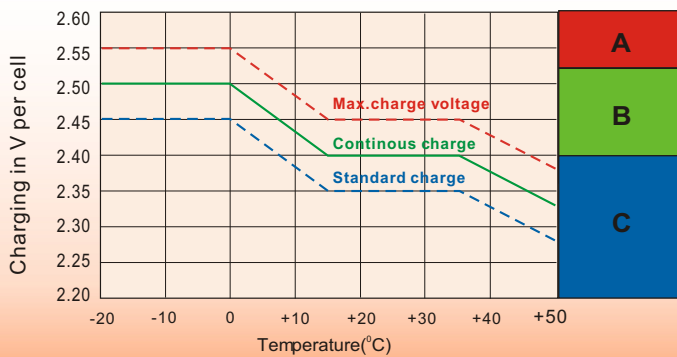
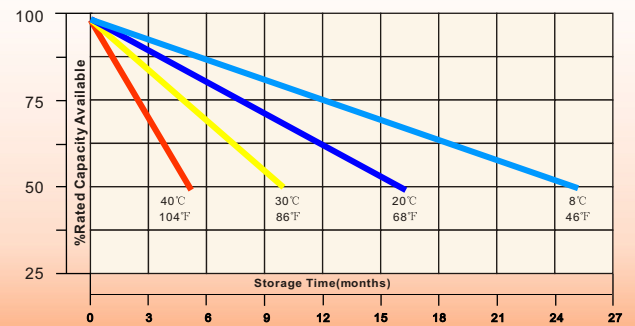
Effect of Temperature on Long Term Float Life



Cycle Service Life



Self-Discharge at Different Temperatures



Charge Mode

- A** With switch regulator (two-step controller) charge on curve max.charge voltage for max.2 hrs/day then switch over to continuous charge
- B** Standard charge without switching
- C** Boost charge (Equalizing charge with external generator) charge on curve continuous charge for max. 5 hrs/month, then switch over to curve Standard charge

Sales Office

China sales office:

Add:5th Floor,Xinbaohui Bldg.,Nanhai Blvd.,
Nanshan,Shenzhen, China. 518052
Tel:+ 86-755-86036060 (100 lines)
Fax: +86-755-26067269
E-mail:export@leoch.com
Http://www.leoch.com

HongKong sales office:

Add: Workshop C, 33/F, TML Tower,
No. 3 Hoi Shing Road, Tsuen Wan,
New Territories, Hong Kong
Tel: +852 35786666
Fax: +852 21170016
E-mail: sales.hk@leoch.com

Singapore sales office:

Add: No. 1 Tech Park Crescent,
Singapore 638131
Tel: +65 68416629
Fax: +65 68443210
Email: sales.sg@leoch.com

North America sales office:

Add: 19751 Descartes, Unit A,
Foothill Ranch, CA 92610, USA
Tel: 949-588-5853
Fax: 949-588-5966
E-mail: sales@leoch.us
Http://www.leoch.com

Europe sales office:

Add: 9B Wheatstone Court. Waterwells
Business Park, Gloucester, GL2-2AQ,
UK United Kingdom
Tel: +44(0) 1452 729428 / 1452 729696
Fax: +44 (0)1452-690125
E-mail: Sales.Europe@leoch.com