

ASTRO



Choice of lighting levels up to 1280 lumens; over 400 lux @ 1 metre



Wide spread of light; perfectly angled for awning and area lighting



Quick to install; compact design



Waterproof to IP66



E-type approved



TECHNICAL SPECS OVERLEAF 
SEPTEMBER 2016



DESIGNED FOR MULTI-SECTOR APPLICATIONS



10 YEAR WARRANTY



BRIGHTER



E-TYPE APPROVED



MADE IN THE UK



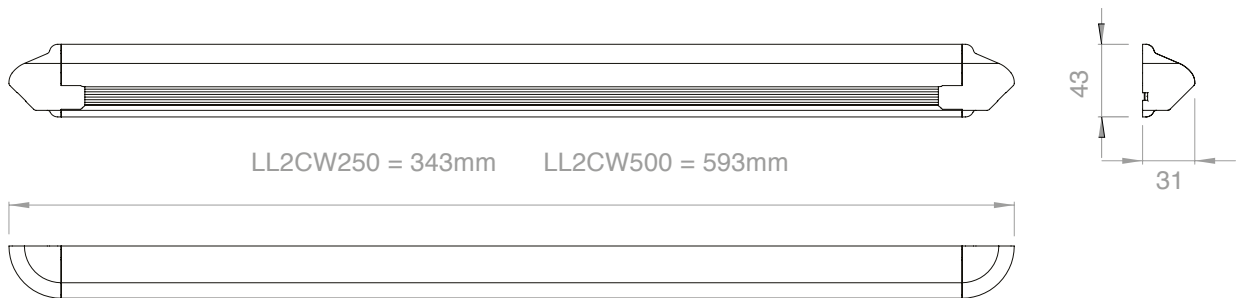
ASTRO

Long life, high intensity Cree LEDs - The Astro incorporates the Orizon LED strip light which uses the latest in LED technology, offering optimum performance and extended life. The properties of these LEDs give greater luminosity, allowing us to offer a brighter unit whilst using fewer LEDs to maintain the low power draw. This unit is available with 12, 24 and 48 LEDs, offering a choice of light output and lengths to suit every application and every budget.

Wide spread of light - The Astro is approximately twice as long as a standard awning light, thereby increasing the spread of light along the side of a vehicle offering greater external illumination. The angled wash of light to the floor also makes it a perfect light source to illuminate work areas, shelving, lockers and much more.

Quick to install, compact design - The LED strip sits within a slim aluminium housing which conceals the fixings; and with ABS snap-on end caps, this compact light unit is quick and easy to install.

Waterproof to IP66 - The PCB driver, components and LEDs are completely encased within a polycarbonate extrusion, which protects against moisture ingress.



SPECIFICATION

ALL DIMENSIONS HAVE A TOLERANCE OF +/-1mm

	12VDC	LL2CW250 (12 LED - 12V)	LL2CW250-24 (24 LED - 12V)	LL2CW500 (24 LED - 12V)	LL2CW500-48 (48 LED - 12V)
Voltage Range	VDC	10-14	10-14	10-14	10-14
Average Current	A	0.24	0.44	0.44	1.00
Light Output	lm	320	640	640	1280
Watts	W	3W	6W	6W	12W
Weight	kg	0.44	0.44	0.44	0.49
Temp. Range	°C	-30 to +40	-30 to +40	-30 to +40	-30 to +40
IP Rating	IP	IP66	IP66	IP66	IP66
	24VDC	LL2CW250/2 (12 LED - 24V)	LL2CW250-24/2 (24 LED - 24V)	LL2CW500/2 (24 LED - 24V)	LL2CW500-48/2 (48 LED - 24V)
Voltage Range	VDC	20-28	20-28	20-28	20-28
Average Current	A	0.12	0.22	0.22	0.5
Light Output	lm	320	640	640	1280
Watts	W	3W	6W	6W	12W
Weight	kg	0.23	0.44	0.44	0.49
Temp. Range	°C	-30 to +40	-30 to +40	-30 to +40	-30 to +40
IP Rating	IP	IP66	IP66	IP66	IP66

E & OE | Calculations based on average LED values @ 13.2V (for 12V models) and @ 26V (for 24V)

