

BODY MEASUREMENTS IN INCHES/CENTIMETERS: MISSES'/WOMEN'S

MESURES DU CORPS EN CENTIMETRES: JEUNES/FEMMES

MISSES': About 5'5" to 5'6" (165cm to 167cm) height. **MISS PETITE:** About 5'2" to 5'3" (157cm to 160cm) height. Misses patterns are made for a B cup with 2" (5cm) difference between bust and high bust measurement.

JEUNES FEMMES: Environ 165cm à 167cm de stature. **PETITES JEUNES FEMMES:** Environ 157cm à 160cm de stature. Les patrons pour jeunes femmes sont pour un bonnet B avec une différence de 6.3 cm entre la mesure de la poitrine et de la poitrine haute.

SIZE	XXS		XS		S		M		L		XL		XXL	
	4	6	8	10	12	14	16	18	20	22	24	26		
Sizes-European	30	32	34	36	38	40	42	44	46	48	50	52		
Sizes-French	32	34	36	38	40	42	44	46	48	50	52	54		
	in. cm.	in. cm.	in. cm.	in. cm.	in. cm.	in. cm.	in. cm.	in. cm.	in. cm.	in. cm.	in. cm.	in. cm.		
High Bust	27½ 70	28½ 73	29½ 75	30½ 78	32 81	34 87	36 92	38 97	40 102	42 107	44 112	46 117		
Bust	29½ 75	30½ 78	31½ 80	32½ 83	34 87	36 92	38 97	40 102	42 107	44 112	46 117	48 122		
Waist	22 56	23 58	24 61	25 64	26½ 67	28 71	30 76	32 81	34 87	37 94	39 99	41½ 104		
Hip	31½ 80	32½ 83	33½ 85	34½ 88	36 92	38 97	40 102	42 107	44 112	46 117	48 122	50 127		
Back Waist Length	15½ 38.5	15½ 39.5	15¾ 40	16 40.5	16¼ 41.5	16½ 42	16¾ 42.5	17 43	17¼ 44	17¾ 44	17½ 44.5	17¾ 44.5		
Petite Back Waist Length	14¾ 36	14½ 37	14¾ 37.5	15 38	15¼ 38.5	15½ 39.5	15¾ 40	16 40.5	16¼ 41.5	16¾ 41.5	16½ 42	16¾ 42		

WOMEN'S: About 5'5" to 5'6" (165cm to 167cm) height. **WOMEN'S PETITE:** About 5'2" to 5'3" (157cm to 160cm) height. Womens patterns are made for a C cup with 1" (2.5cm) difference between bust and high bust measurement.

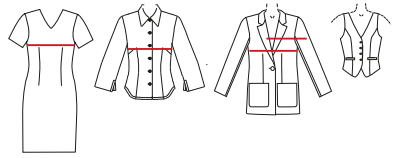
FEMMES: Environ 165cm à 167cm de stature. **PETITES FEMMES:** Environ 157cm à 160cm de stature. Les patrons pour femmes sont pour un bonnet C avec une différence de 2.5cm entre la mesure de la poitrine et de la poitrine haute.

SIZE	1X		2X		3X		4X		5X		6X	
	16W	18W	20W	22W	24W	26W	28W	30W	32W	34W	36W	38W
Sizes-European	42	44	46	48	50	52	54	56	58	60	62	64
Sizes-French	44	46	48	50	52	54	56	58	60	62	64	66
	in. cm.	in. cm.	in. cm.	in. cm.	in. cm.	in. cm.	in. cm.	in. cm.	in. cm.	in. cm.	in. cm.	in. cm.
High Bust	37 94	39 99	41 104	43 109	45 114	47 119	49 124	51 130	53 135	55 140	57 145	59 150
Bust	38 97	40 102	42 107	44 112	46 117	48 122	50 127	52 132	54 137	56 142.5	58 147	60 152.5
Waist	31 79	33 84	35 89	37 94	39 99	41½ 105	44 112	46½ 118	49 124	51½ 130	53 134	54½ 138
Hip	40 102	42 107	44 112	46 117	48 122	50 127	52 132	54 137	56 142	58 147	60 152	62 157.5
Back Waist Length	16¾ 42.5	17¼ 43	17¾ 44	17¾ 44	17½ 44.5	17¾ 45	17¾ 45	17¾ 45.5	18 46	18¼ 46	18¼ 46.5	18¾ 47
Petite Back Waist Length	16 40.5	16¼ 41	16¼ 41.5	16¾ 42	16½ 42	16¾ 42.5	16¾ 42.5	16¾ 43	17 43	17¼ 43.5	17¼ 44	17¾ 44.5

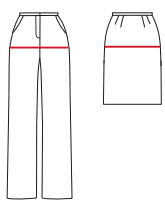
MISSES'/WOMEN'S
JEUNES FEMMES/ FEMMES

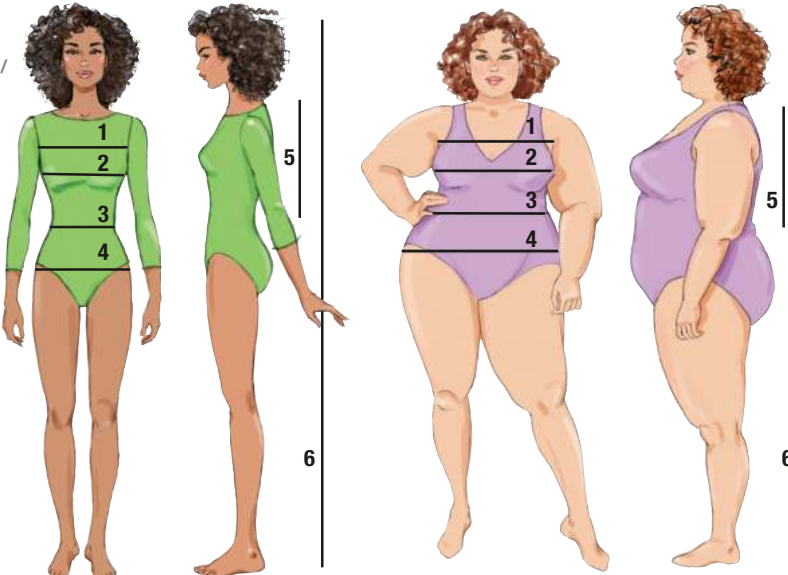
- 1- High Bust**
Poitrine haute
- 2- Bust**
Poitrine
- 3- Waist**
Taille
- 4- Hip**
Hanches
- 5- Back Waist Length**
Longueur dos
- 6- Height**
Hauteur

TOPS / HAUTS
The Bust measurement determines the size.
Le tour de poitrine détermine la taille.



BOTTOMS / LES FONDS
The Hip measurement determines the size.
Le tour de hanches détermine la taille.





BODY MEASUREMENTS IN INCHES/CENTIMETERS: MEN

MESURES DU CORPS EN CENTIMETRES: HOMMES

MEN'S: For men of average build; about 5'10" height.

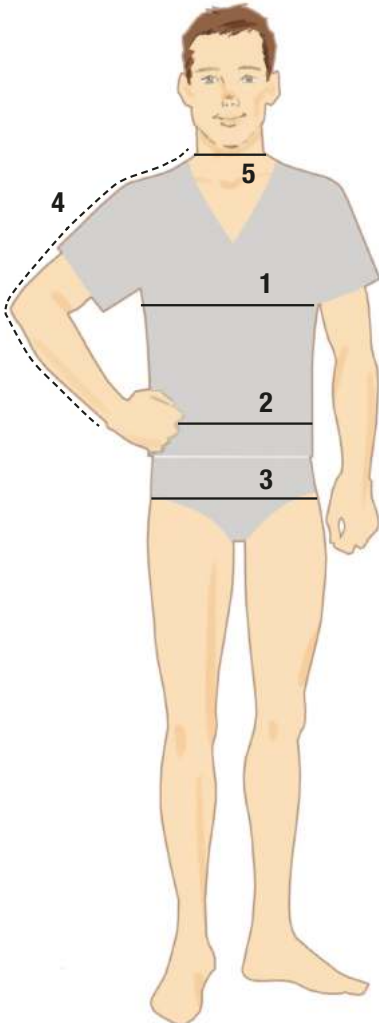
HOMMES: Pour hommes de corpulence moyenne; environ 177cm de stature.

SIZE	XS		S		M		L		XL		XXL		XXXL													
	32	34	36	38	40	42	44	46	48	50	52	54	56													
Sizes- European French	42	44	46	48	50	52	54	56	58	60	62	64	66													
	in.	cm.	in.	cm.	in.	cm.	in.	cm.	in.	cm.	in.	cm.	in.	cm.												
Chest	32	81	34	87	36	92	38	97	40	102	42	107	44	112	46	117	48	122	50	127	52	132	54	137	56	142.5
Waist	27	68.5	28	71	30	76	32	81	34	87	36	92	39	99	42	107	44	112	46	117	48	122	50	127	52	132
Hip (Seat)	34	87	35	89	37	94	39	99	41	104	43	109	45	114	47	119	49	124	51	130	53	135	55	140	57	145
Shirt Sleeve	31	79	32	81	32	81	33	84	33	84	34	87	34	87	35	89	35	89	35	89	35	89	35	89	35	89
Neckband	13½	34	14	35.5	14½	37	15	38	15½	39.5	16	40.5	16½	42	17	43	17½	44.5	18	46	18½	47	19	48.5	19½	49.5

UNISEX: Unisex sizing is based on men's measurements.

UNISEXE: La taille unisexe est basée sur les mesures pour hommes.

SIZE	XXS		XS		S		M		L		XL		XXL		XXXL	
	in.	cm.	in.	cm.	in.	cm.	in.	cm.	in.	cm.	in.	cm.	in.	cm.	in.	cm.
Chest/Bust	28-29	71-74	30-32	76-81	34-36	87-92	38-40	97-102	42-44	107-112	46-48	117-122	50-52	127-132	54-56	137-142.5
Waist	29-30	74-76	31-32½	79-82	35-37	89-94	39-41	99-104	43-45	109-114	47-49	119-124	51-53	130-135	55-57	140-145



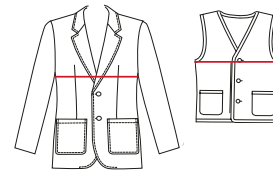
MEN'S HOMMES

- 1- Chest**
Poitrine
- 2- Waist**
Taille
- 3- Hip**
Hanches
- 4- Shirt Sleeve**
Manche de chemise
- 5- Neckband**
Bande d'encolure

JACKET / VESTE VEST / GILETS

The Chest measurement determines the size.

Le tour de poitrine détermine a taille.



SHIRT / CHEMISE

The Neck measurement determines the size.

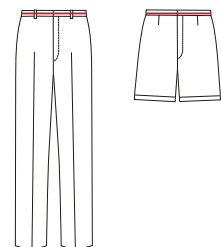
Le tour de cou détermine la taille.



PANTS / PANTALON

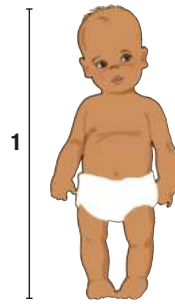
The Waist measurement determines the size.

Le tour de taille détermine la taille.



BODY MEASUREMENTS IN INCHES/CENTIMETERS: KIDS

MESURES DU CORPS EN CENTIMETRES: ENFANTS

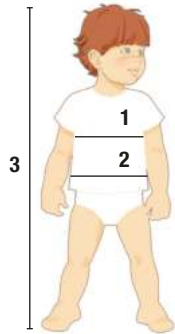


INFANTS: For babies who are not yet walking.
BÉBÉS: Pour bébés qui ne marchent pas encore.

SIZE	XXS		XS		Small		Medium		Large	
	lbs.	kgs.	lbs.	kgs.	lbs.	kgs.	lbs.	kgs.	lbs.	kgs.
Weight	Up to	Up to	7-13	3-6	13-18	6-8	18-21	8-9.5	21-24	9.5-11
	7	3								
Height	in.	cm.	in.	cm.	in.	cm.	in.	cm.	in.	cm.
	Up to	Up to	17-24	43-61	24-26½	61-67	26½-31	67-79	31-34	79-87

TODDLERS' JEUNES ENFANTS

- 1-Chest**
Poitrine
- 2-Waist**
Taille
- 3-Height**
Hauteur

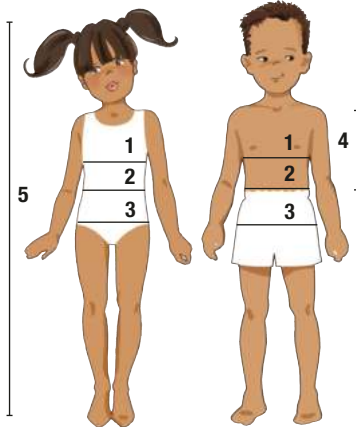


TODDLERS': Between a baby and child. Pants have diaper allowance.
JEUNES ENFANTS: Pour les tailles entre bébé et jeune enfant.
 Le pantalon a de l'ampleur pour la couche.

SIZE	½		1		2		3		4	
	in.	cm.	in.	cm.	in.	cm.	in.	cm.	in.	cm.
Chest	19	48	20	51	21	53	22	56	23	58
Waist	19	48	19½	50	20	51	20½	52	21	53
Height	28	71	31	79	34	87	37	94	40	102

CHILDREN ENFANTS GIRLS/BOYS FILLES/GARÇONS

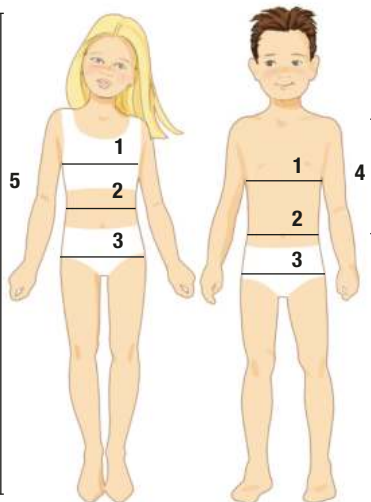
- 1-Chest**
Poitrine
- 2-Waist**
Taille
- 3-Hip**
Taille
- 4-Back Waist Length**
Lonfueur dos
- 5-Height**
Hauteur



CHILDREN: Child who is walking and not wearing diapers.
ENFANTS: Enfant qui marche et ne porte pas de couches.

SIZE	XS		S			M			L							
	2		3	4	5	6	6X	7	8							
	in.	cm.	in.	cm.	in.	cm.	in.	cm.	in.	cm.						
Chest	21	53	22	56	23	58	24	61	25	64	25½	65	26	66	27	69
Waist	20	51	20½	52	21	53	21½	55	22	56	22½	57	23	58	23½	60
Hip	-	-	-	-	24	61	25	64	26	66	26½	67	27	69	28	71
Back Waist Length	8½	22	9	23	9½	24	10	25.5	10½	27	10¾	27.5	11½	29.5	12	31
Height	35	89	38	97	41	104	44	112	47	119	48	122	50	127	52	132

GIRLS/BOYS: For growing girl/boy who has not yet begun to mature.
FILLES/GARÇONS: Pour fille/garçon en pleine croissance.



SIZE	Girls & Boys						Girls Plus															
	S		M		L																	
	7	8	10	12	14	16	8½	10½	12½	14½	16½											
	in.	cm.	in.	cm.	in.	cm.	in.	cm.	in.	cm.	in.	cm.										
Chest	26	66	27	69	28½	73	30	76	32	81	34	87	30	76	30½	80	33	84	34½	88	36	92
Waist	23	58	23½	60	24½	62	25½	65	26½	67	27½	70	28	71	29	74	30	76	31	79	32	81
Hip	27	69	28	71	30	76	32	81	34	87	36	92	33	84	34½	88	36	92	37½	96	39	99
Back Waist Length	11½	29.5	12	31	12¾	32.5	13½	34.5	14½	36	15	38	12½	32	13¼	34	14	35.5	14¾	37.5	15½	39.5
Height	50	127	52	132	56	142	58½	149	61	155	61½	156	52	132	56	142	58½	149	61	155	63½	161