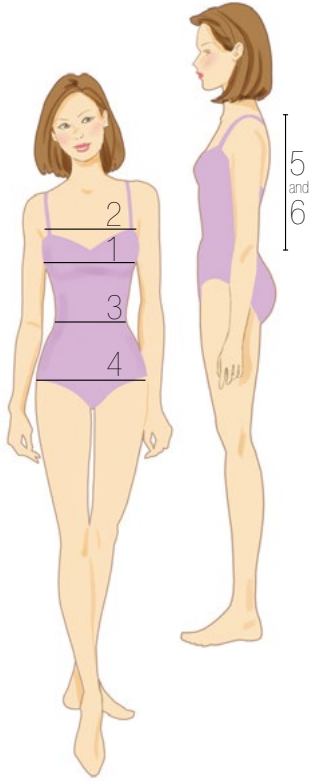


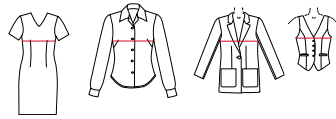
Body Measurement Charts

Butterick, McCall's, Vogue Patterns

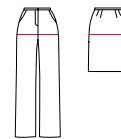
MISSES': About 5'5" (1.65cm) to 5'6" (1.68cm) height. **MISS PETITE**: About 5'2" (1.57cm) to 5'3" (1.60cm) height.



SIZES	1 BUST		2 CHEST		3 WAIST		4 HIP		5 BACK WAIST LENGTH		6 PETITE BACK WAIST LENGTH	
	in.	cm.	in.	cm.	in.	cm.	in.	cm.	in.	cm.	in.	cm.
4	29 ¹ / ₂	75	27 ¹ / ₂	70	22	56	31 ¹ / ₂	80	15 ³ / ₄	39	14	35.5
6	30 ¹ / ₂	78	28 ¹ / ₂	73	23	58	32 ¹ / ₂	83	15 ¹ / ₂	39.5	14 ¹ / ₄	36
8	31 ¹ / ₂	80	29 ¹ / ₂	75	24	61	33 ¹ / ₂	85	15 ³ / ₄	40	14 ³ / ₄	37.5
10	32 ¹ / ₂	83	30 ¹ / ₂	78	25	64	34 ¹ / ₂	88	16	40.5	15	38
12	34	87	32	81	26 ¹ / ₂	67	36	92	16 ¹ / ₄	41.5	15 ¹ / ₄	39
14	36	92	34	87	28	71	38	97	16 ¹ / ₂	42	15 ¹ / ₂	39.5
16	38	97	36	92	30	76	40	102	16 ³ / ₄	42.5	15 ³ / ₄	40
18	40	102	38	97	32	81	42	107	17	43	16	40.5
20	42	107	40	102	34	87	44	112	17 ¹ / ₄	44	16 ¹ / ₄	41
22	44	112	42	107	37	94	46	117	17 ¹ / ₂	44.5	16 ¹ / ₂	42
24	46	117	44	112	39	99	48	122	17 ³ / ₄	45	16 ³ / ₄	42.5
26	48	122	46	117	41 ¹ / ₂	104	50	127	18	46	17	43

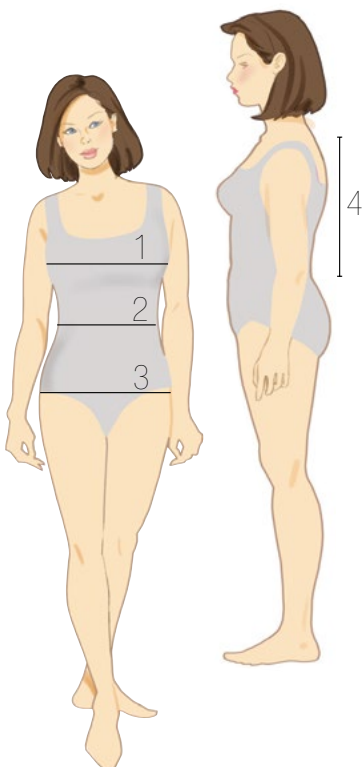


The bust measurement determines the size for dresses & tops.

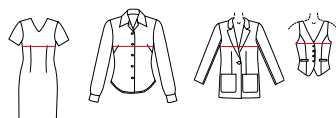


The hip measurement determines the size for pants & skirts.

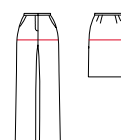
TODAY'S FIT by SANDRA BETZINA: About 5'5" (1.65cm) to 5'6" (1.67cm) height.



SIZES	1 BUST		2 WAIST		3 HIP		4 BACK WAIST LENGTH	
	in.	cm.	in.	cm.	in.	cm.	in.	cm.
A	32	81	26 ¹ / ₂	67	34 ¹ / ₂	87.5	15 ³ / ₄	40
B	34	86.5	28 ¹ / ₂	72	36 ¹ / ₂	92.5	16	40.5
C	36	91.5	30 ¹ / ₂	77.5	38 ¹ / ₂	98	16 ¹ / ₄	41
D	38	96.5	32 ¹ / ₂	82.5	40 ¹ / ₂	103	16 ¹ / ₂	42
E	40 ¹ / ₂	103	35	89	42 ¹ / ₂	108	16 ³ / ₄	42.5
F	43	109	37 ¹ / ₂	95	45	116	17	43
G	46	117	41 ¹ / ₂	105	48	122	17 ¹ / ₄	44
H	49	124.5	44 ¹ / ₂	113	51	130	17 ¹ / ₄	44
I	52	132	47 ¹ / ₂	121	54	137	17 ¹ / ₄	44
J	55	140	50 ¹ / ₂	128	57	145	17 ¹ / ₄	44



The bust measurement determines the size for dresses & tops.

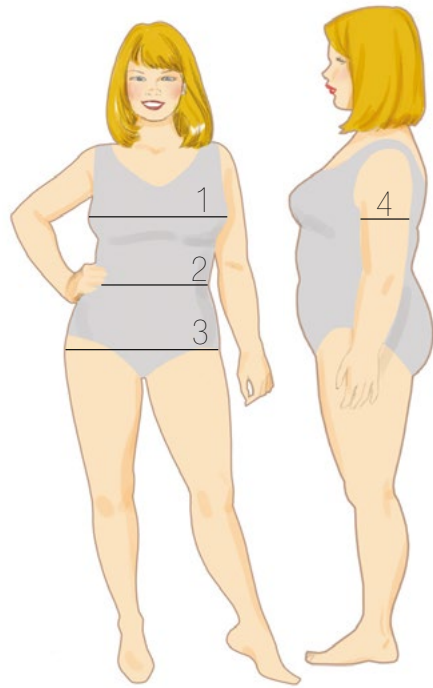


The hip measurement determines the size for pants & skirts.

Body Measurement Charts

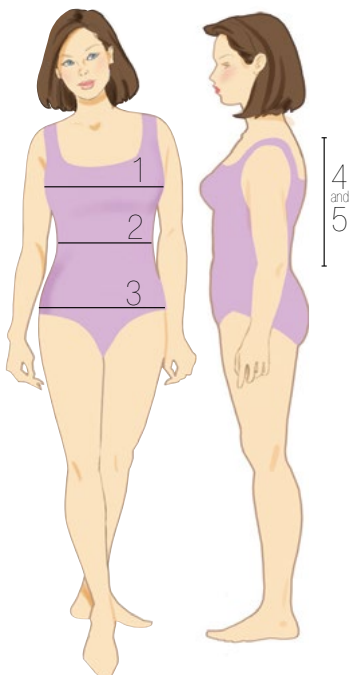
Butterick, McCall's, Vogue Patterns

CONNIE CRAWFORD CUSTOM SIZE CHART

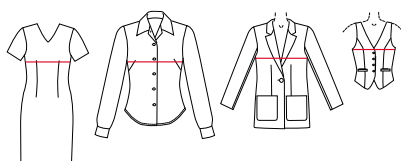


SIZES	US RETAIL SIZE	1 BUST		2 WAIST		3 HIP		4 BICEPS	
		in.	cm.	in.	cm.	in.	cm.	in.	cm.
XS	3-4	34-35	87-89	25-26	64-66	35-36	89-92		
S	6-8	36-37	92-94	27-28	68-71	37-38	94-97		
M	10-12	38-39	97-99	29-30	74-76	39-40	99-102		
L	14	40-41	102-104	31-32	79-81	41-42	104-107		
XL	16	42-43	107-109	33-34	84-87	43-46	109-117		
XXL	18-20W	44-45	112-115	36-37	92-94	48-52	122-132	15½	39.5
1X	22-24W	46-48	117-122	38-40	97-102	54-56	137-142	16½	42
2X	26-28W	50-52	127-132	42-44	107-112	58-60	147-152	18	45
3X	30-32W	54-56	137-142	46-48	117-122	62-64	155-160	19½	49.5
4X	34-36W	58-60	147-152	50-52	127-132	66-68	165-170	21	53
5X	38-40W	62-64	155-160	54-55	137-140	70-72	175-180	22½	56
6X	42-44W	66-68	165-170	56-58	142-147	74-76	185-190	24	61

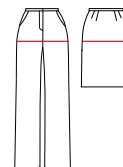
WOMEN'S: About 5'5" to 5'6" height. **WOMEN'S PETITE:** About 5'2" to 5'3" height.



SIZES	1 BUST		2 WAIST		3 HIP		4 BACK WAIST LENGTH		5 PETITE BACK WAIST LENGTH	
	in.	cm.	in.	cm.	in.	cm.	in.	cm.	in.	cm.
16W	38	97	31	78	40	102	16¾	42.5	16	40.5
18W	40	102	33	84	42	107	17⅛	43	16⅞	41
20W	42	107	35	89	44	112	17¼	44	16¼	41.5
22W	44	112	37	94	46	117	17⅜	44	16⅝	42
24W	46	117	39	99	48	122	17½	44.5	16½	42
26W	48	122	41½	105	50	127	17⅝	45	16⅝	42.5
28W	50	127	44	112	52	132	17¾	45	16¾	42.5
30W	52	132	46½	118	54	137	17⅞	45.5	16⅞	43
32W	54	137	49	124	56	142	18	46	17	43



The bust measurement determines the size



The hip measurement determines the size

Body Measurement Charts

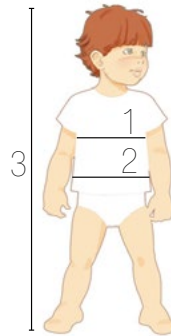
Butterick, McCall's, Vogue Patterns

INFANTS: For babies who are not yet walking.



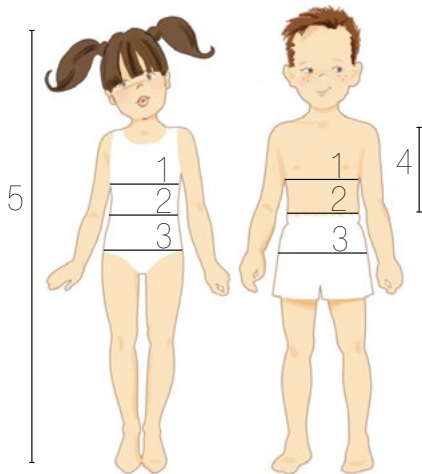
SIZES	WEIGHT		1 HEIGHT		AGE
	lbs.	kg.	in.	cm.	
Newborn	8-12	4-6	18-24	46-61	0-3
Small	13-17	6-8	25-26	64-66	6
Medium	18-21	8-10	27-28	69-71	9
Large	22-25	10-11	29-30	74-76	12
X-Large	26-29	12-13	31-32	79-81	18-24

TODDLERS: Between a baby and child. Pants have diaper allowance.



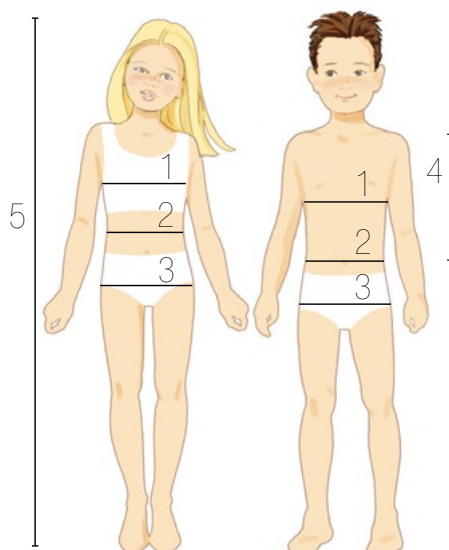
SIZES	1 CHEST		2 WAIST		3 HEIGHT	
	in.	cm.	in.	cm.	in.	cm.
1/2	19	48	19	48	28	71
1	20	51	19 1/2	50	31	79
2	21	53	20	51	34	87
3	22	56	20 1/2	52	37	94
4	23	58	21	53	40	102

CHILDREN: Child who is walking and not wearing diapers.



SIZES	1 CHEST		2 WAIST		3 HIP		4 BACK WAIST LENGTH		5 HEIGHT	
	in.	cm.	in.	cm.	in.	cm.	in.	cm.	in.	cm.
2	21	53	20	51			8 1/2	22	35	89
3	22	56	20 1/2	52			9	23	38	97
4	23	58	21	53	24	61	9 1/2	24	41	104
5	24	61	21 1/2	55	25	64	10	25.5	44	112
6	25	64	22	56	26	66	10 1/2	27	47	119
6x	25 1/2	65	22 1/2	57	26 1/2	67	10 3/4	27.5	48	122

GIRLS / BOYS: For growing girl/boy who has not yet begun to mature.

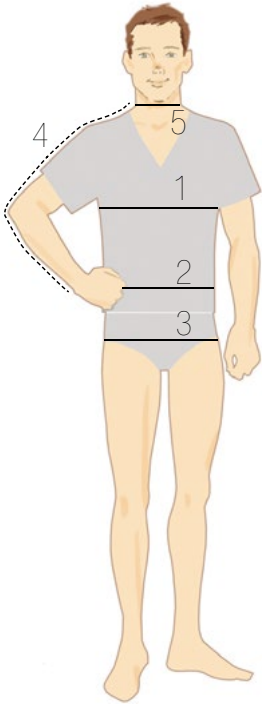


SIZES	1 CHEST		2 WAIST		3 HIP		4 BACK WAIST LENGTH		5 HEIGHT	
	in.	cm.	in.	cm.	in.	cm.	in.	cm.	in.	cm.
7	26	66	23	58	27	69	11 1/2	29.5	50	127
8	27	69	23 1/2	60	28	71	12	31	52	132
10	28 1/2	73	24 1/2	62	30	76	12 3/4	32.5	56	142
12	30	76	25 1/2	65	32	81	13 1/2	34.5	58 1/2	149
14	32	81	26 1/2	67	34	87	14 1/4	36	61	155
16	34	87	27 1/2	70	36	92	15	38	61 1/2	156
GIRL'S PLUS S										
8 1/2	30	76	28	71	33	84	12 1/2	32	52	132
10 1/2	30 1/2	80	29	74	34 1/2	88	13 1/4	34	56	142
12 1/2	33	84	30	76	36	92	14	35.5	58 1/2	149
14 1/2	34 1/2	88	31	79	37 1/2	96	14 3/4	37.5	61	155
16 1/2	36	92	32	81	39	99	15 1/2	39.5	63 1/2	161

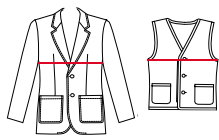
Body Measurement Charts

Butterick, McCall's, Vogue Patterns

MEN'S: For men of average build; about 5'10" (1.77cm) height.



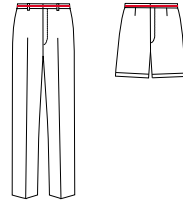
SIZES	1 CHEST		2 WAIST		3 HIP (SEAT)		4 SHIRT SLEEVE		5 NECKBAND	
	in.	cm	in.	cm	in.	cm	in.	cm	in.	cm
34	34	87	28	71	35	89	32	81	14	35.5
36	36	92	30	76	37	94	32	81	14½	37
38	38	97	32	81	39	99	33	84	15	38
40	40	102	34	87	41	104	33	84	15½	39.5
42	42	107	36	92	43	109	34	87	16	40.5
44	44	112	39	99	45	114	34	87	16½	42
46	46	117	42	107	47	119	35	89	17	43
48	48	122	44	112	49	124	35	89	17½	44.5
50	50	127	46	117	51	130	35	89	18	46
52	52	132	48	122	53	135	35	89	18½	47
54	54	137	50	127	55	140	35	89	19	48.5
56	56	142.5	52	132	57	145	35	89	19½	49.5



The chest measurement determines the size for jackets and waistcoats.



The neck measurement determines the size for shirts.



The waist measurement determines the size for pants.